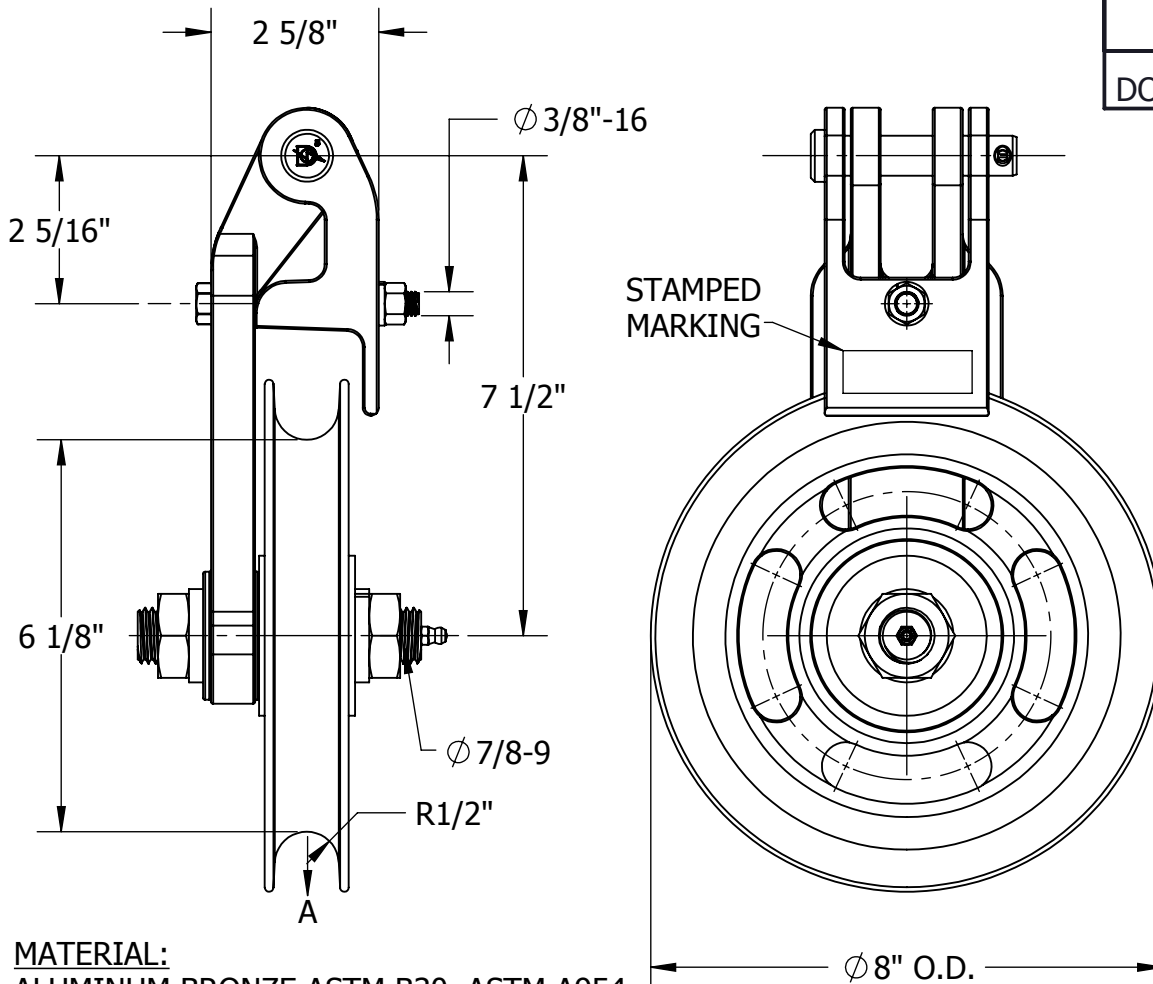


THIS DRAWING AND ALL INFORMATION ON IT IS THE PROPERTY OF AFL. IT IS CONFIDENTIAL AND IT IS GIVEN TO YOU FOR A LIMITED PURPOSE AND MUST BE RETURNED UPON REQUEST. NEITHER THIS DRAWING OR ANY PART OF IT NOR ANY INFORMATION CONCERNING IT MAY BE COPIED, EXHIBITED, OR FURNISHED TO OTHERS NOR PHOTOGRAPHS TAKEN OF ANY ARTICLE FABRICATED OR ASSEMBLED FROM THE DRAWING WITHOUT THE CONSENT OF AFL.

ITEM NO:

DWG. NO:

DOS-B-8025



MATERIAL:

ALUMINUM BRONZE ASTM B30, ASTM A954

BOLTS, NUTS & LOCKWASHERS - STAINLESS STEEL, 18-8

COTTER PIN - STAINLESS STEEL

CLEVIS PIN - STEEL, H.D.G.*, ASTM A153

MECHANICAL RATINGS:

MIN. ULTIMATE STRENGTH:

A = 13,529 LBS

NOTE:

1. CABLE WIRE 300 MCM (ϕ .630) WITH ARMOR ROD SLEEVE OVERALL ϕ .950.

BOLT SIZES	WRENCH/ SOCKET SIZES	TORQUE VALUES (FT-LBS)
3/8-16	9/16 HEX	19
7/8-9	1 5/16 HEX	194

WT: 13.05 LB

* = HOT DIP GALVANIZED

LOCATION

CONTRACT NO

CUST / CONTR

REVISIONS

REV	DESCRIPTION	DATE	BY	APR

DRN BY:
HV

DRN DATE:
1.19.15

CHK BY:
MC

CHK DATE:
1.19.15

PA 2014.2962.0

AFL DOSSERT®

PULLEY, ASSEMBLY WITH GUARD

REV
0

PART NO:

PPHM94-625-G

1 OF 1