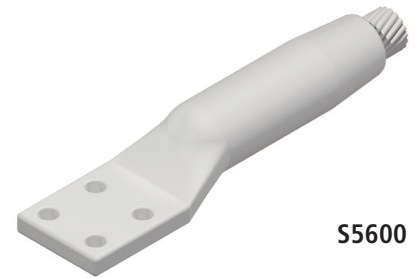


DOSSERT® S5600 Series, S5100 Series Terminal Connectors

The S5600, S5100 Series Terminal Connector is designed for ACSR and AAC conductors. The terminal is fabricated from ACA seamless drawn aluminum.

Notes

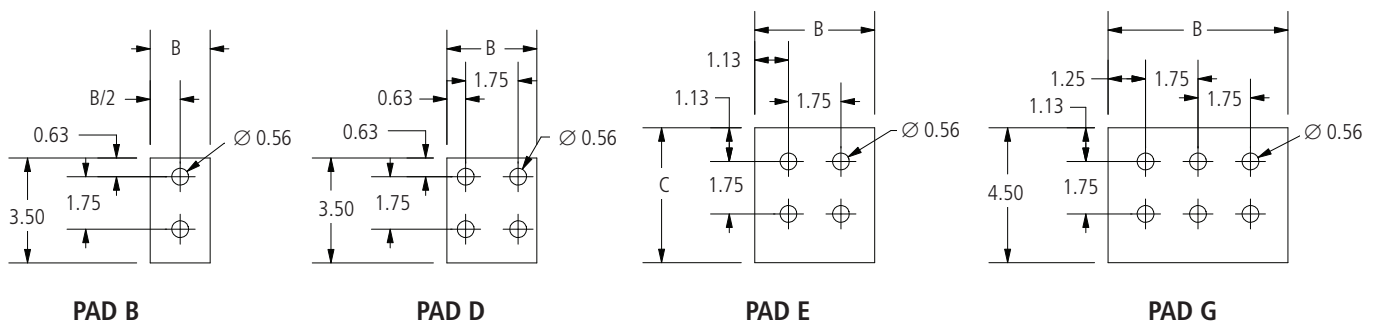
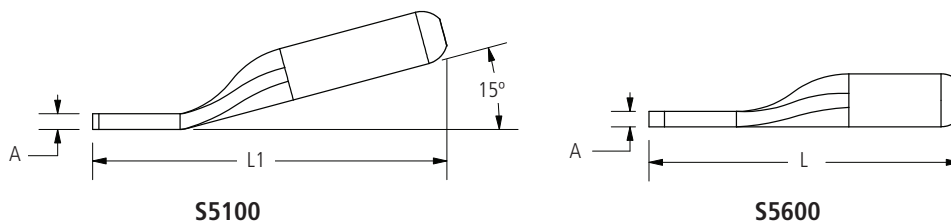
Other pads sizes can be custom ordered.



S5600



S5100



Ordering Information

CATALOG NUMBER		CONDUCTOR					DIE SIZE ALUMINUM HEX DIE	DIMENSIONS IN INCHES					PAD SIZE
STRAIGHT	15 DEGREE	ACSR OR AAC	CODE WORD	SIZE KCMIL	STRANDING AL/ST	DIAMETER IN INCHES		A	B	C	L	L1	
S5673.391	S5173.391	AAC	Poppy	1/0	7	0.368	73AH	0.20	1.00	—	7.44	6.44	B
S5673.391D	S5173.391D	AAC	Poppy	1/0	7	0.368	73AH	0.50	3.00	—	7.84	6.44	D
S5674.438	S5174.438	ACSR	Raven	1/0	6/1	0.398	74AH	0.30	1.00	—	7.81	7.31	B
		AAC	Aster	2/0	7	0.414							
S5674.438D	S5174.438D	ACSR	Raven	1/0	6/1	0.398	74AH	0.50	3.00	—	7.84	7.31	D
		AAC	Aster	2/0	7	0.414							
S5674.484	S5174.484	ACSR	Quail	2/0	6/1	0.447	74AH	0.30	1.00	—	7.81	7.31	B
		ACSR	Phlox	3/0	7	0.464							
S5675.547	S5175.547	ACSR	Pigeon	3/0	6/1	0.502	75AH	0.50	1.00	—	8.38	7.00	B
		AAC	Oxlip	4/0	7	0.522							
S5675.547D	S5175.547D	ACSR	Pigeon	3/0	6/1	0.502	75AH	0.50	3.00	—	8.20	6.88	D
		AAC	Oxlip	4/0	7	0.522							
S5675.609	S5175.609	ACSR	Penguin	4/0	6/1	0.563	75AH	0.50	1.00	—	8.38	7.00	B
		AAC	Valerian	250	19	0.575							
		AAC	Laurel	266.8	19	0.593							



230 kV Aluminum Compression Connectors

DOSSERT®

S5600 Series, S5100 Series (cont.)

Terminal Connectors

Ordering Information

CATALOG NUMBER		CONDUCTOR					DIE SIZE ALUMINUM HEX DIE	DIMENSIONS IN INCHES					PAD SIZE
STRAIGHT	15 DEGREE	ACSR OR AAC	CODE WORD	SIZE KCMIL	STRANDING AL/ST	DIAMETER IN INCHES		A	B	C	L	L1	
S5675.609D	S5175.609D	ACSR	Penguin	4/0	6/1	0.563	75AH	0.50	3.00	—	8.18	7.00	D
		AAC	Valerian	250	19	0.575							
		AAC	Laurel	266.8	19	0.593							
S5676.656	S5176.656	ACSR	Waxwing	266.8	18/1	0.609	76AH	0.60	1.30	—	8.81	9.00	B
		AAC	Peony	300	19	0.629							
S5676.656D	S5176.656D	ACSR	Waxwing	266.8	18/1	0.609	76AH	0.50	3.00	—	7.36	9.00	D
		AAC	Peony	300	19	0.629							
		ACSR	Owl	266.8	6/7	0.633							
S5676.688	S5176.688	ACSR	Partridge	266.8	26/7	0.642	76AH	0.60	1.30	—	8.81	9.00	B
		AAC	Tulip	336.4	19	0.666							
		ACSR	Owl	266.8	6/7	0.633							
S5676.688D	S5176.688D	ACSR	Partridge	266.8	26/7	0.642	76AH	0.50	3.00	—	7.34	9.00	D
		AAC	Tulip	336.4	19	0.666							
		AAC	Daffodil	350	19	0.679							
S5620.719	S5120.719	AAC	Daffodil	350	19	0.679	20AH	0.50	1.30	—	10.50	8.50	B
S5676.719	S5176.719	ACSR	Ostrich	300	26/7	0.680	76AH	0.50	1.30	—	8.81	9.00	B
		ACSR	Merlin	336.4	18/1	0.684							
S5676.719D	S5176.719D	ACSR	Ostrich	300	26/7	0.680	76AH	0.50	3.00	—	7.33	8.76	D
		ACSR	Merlin	336.4	18/1	0.684							
		ACSR	Linnet	336.4	26/7	0.720							
S5620.781	S5120.781	ACSR	Oriole	336.4	30/7	0.741	20AH	0.50	1.30	—	10.50	8.50	B
		ACSR	Chickadee	397.5	18/1	0.743							
		ACSR	Linnet	336.4	26/7	0.720							
S5620.781D	S5120.781D	ACSR	Oriole	336.4	30/7	0.741	20AH	0.50	3.00	—	7.61	8.50	D
		ACSR	Chickadee	397.5	18/1	0.743							
		ACSR	Linnet	336.4	26/7	0.720							
S5676.781	S5176.781	ACSR	Linnet	336.4	26/7	0.720	76AH	0.50	1.30	—	8.81	9.00	B
		ACSR	Chickadee	397.5	18/1	0.743							
		ACSR	Linnet	336.4	26/7	0.720							
S5676.781D	S5176.781D	ACSR	Linnet	336.4	26/7	0.720	76AH	0.50	3.00	—	7.36	9.00	D
		ACSR	Chickadee	397.5	18/1	0.743							
S5676.750	S5176.750	AAC	Canna	397.5	19	0.724	76AH	0.50	1.30	—	8.81	9.00	B
S5676.750D	S5176.750D	AAC	Canna	397.5	19	0.724	76AH	0.50	3.00	—	8.31	9.00	D
S5620.812	S5120.812	ACSR	Brant	397.5	24/7	0.772	20AH	0.50	1.30	—	10.50	8.50	B
		AAC	Goldentuft	450	19	0.770							
		AAC	Yarrow	450	37	0.772							
		AAC	Cosmos	477	19	0.793							
		AAC	Syringa	477	37	0.795							
S5620.812D	S5120.812D	ACSR	Brant	397.5	24/7	0.772	20AH	0.50	3.00	—	8.47	8.50	D
		AAC	Goldentuft	450	19	0.770							
		AAC	Yarrow	450	37	0.772							
		AAC	Cosmos	477	19	0.793							
		AAC	Syringa	477	37	0.795							
S5620.844	S5120.844	ACSR	Ibis	397.5	26/7	0.783	20AH	0.50	1.30	—	10.50	8.50	B
		ACSR	Lark	397.5	30/7	0.806							
S5624.875	S5124.875	ACSR	Pelican	477	18/1	0.814	24AH	0.60	1.50	—	11.46	10.25	B
		AAC	Cosmos	477	19	0.793							
		AAC	Syringa	477	37	0.795							
		AAC	Zinnia	500	19	0.811							
		AAC	Hyacinth	500	37	0.813							
S5624.875D	S5124.875D	ACSR	Pelican	477	18/1	0.814	24AH	0.50	3.00	—	8.78	10.25	D
		AAC	Cosmos	477	19	0.793							
		AAC	Syringa	477	37	0.795							
		AAC	Zinnia	500	19	0.811							
		AAC	Hyacinth	500	37	0.813							
S5624.938	S5124.938	ACSR	Flicker	477	24/7	0.846	24AH	0.60	1.50	—	11.46	10.25	B
		ACSR	Hawk	477	26/7	0.858							
		ACSR	Hen	477	30/7	0.883							
		ACSR	Osprey	556.5	18/1	0.879							
		AAC	Dahlia	556.5	19	0.856							
		AAC	Mistletoe	556.5	37	0.858							
		AAC	Meadowsweet	600	37	0.891							

230 kV Al. Compression Connectors



230 kV Aluminum Compression Connectors

DOSSERT®

S5600 Series, S5100 Series (cont.)

Terminal Connectors

Ordering Information

CATALOG NUMBER		CONDUCTOR					DIE SIZE ALUMINUM HEX DIE	DIMENSIONS IN INCHES					PAD SIZE
STRAIGHT	15 DEGREE	ACSR OR AAC	CODE WORD	SIZE KCMIL	STRANDING AL/ST	DIAMETER IN INCHES		A	B	C	L	L1	
S5624.938D	S5124.938D	ACSR	Flicker	477	24/7	0.846	24AH	0.50	3.00	—	9.25	10.25	D
		ACSR	Hawk	477	26/7	0.858							
		ACSR	Hen	477	30/7	0.883							
		ACSR	Osprey	556.5	18/1	0.879							
		AAC	Dahlia	556.5	19	0.856							
		AAC	Mistletoe	556.5	37	0.858							
S5624.969	S5124.969	AAC	Meadowsweet	600	37	0.891	24AH	0.60	1.50	—	11.46	10.25	B
		ACSR	Parakeet	556.5	24/7	0.914							
		ACSR	Dove	556.5	26/7	0.927							
		AAC	Orchid	636	37	0.918							
S5624.969D	S5124.969D	AAC	Heuchera	650	37	0.928	24AH	0.50	3.00	—	9.23	10.25	D
		ACSR	Parakeet	556.5	24/7	0.914							
		ACSR	Dove	556.5	26/7	0.927							
		AAC	Orchid	636	37	0.918							
S5624.969E	S5124.969E	AAC	Heuchera	650	37	0.928	24AH	0.50	4.00	4.00	9.83	10.25	E
		ACSR	Parakeet	556.5	24/7	0.914							
		ACSR	Dove	556.5	26/7	0.927							
S5627.100	S5127.100	AAC	Orchid	636	37	0.918	27AH	0.40	3.00	—	11.72	10.82	D
		ACSR	Parakeet	556.5	24/7	0.914							
		ACSR	Eagle	556.5	30/7	0.953							
		ACSR	Peacock	605	24/7	0.953							
		ACSR	Squab	605	26/7	0.966							
		ACSR	Swift	636	36/1	0.930							
S5627.106	S5127.106	ACSR	Kingbird	636	18/1	0.940	27AH	0.40	3.00	—	11.72	10.82	D
		AAC	Flag	700	61	0.964							
		ACSR	Teal	605	30/19	0.994							
		ACSR	Rook	636	24/7	0.977							
		ACSR	Grosbeak	636	26/7	0.990							
		ACSR	Egret	636	30/19	1.019							
		ACSR	Flamingo	666.6	24/7	1.000							
		AAC	Violet	715.5	37	0.974							
		AAC	Nasturtium	715.5	61	0.975							
S5627.106E	S5127.106E	AAC	Petunia	750	37	0.997	27AH	0.50	4.00	4.00	10.06	10.07	E
		AAC	Cattail	750	61	0.998							
		ACSR	Teal	605	30/19	0.994							
		ACSR	Rook	636	24/7	0.977							
		ACSR	Grosbeak	636	26/7	0.990							
		ACSR	Egret	636	30/19	1.019							
		ACSR	Flamingo	666.6	24/7	1.000							
S5630.109	S5130.109	AAC	Violet	715.5	37	0.974	30AH	0.50	3.00	—	12.50	11.27	D
		AAC	Nasturtium	715.5	61	0.975							
		AAC	Petunia	750	37	0.997							
		AAC	Cattail	750	61	0.998							
		ACSR	Stilt	715.5	24/7	1.036							
		ACSR	Starling	715.5	26/7	1.051							
		ACSR	Coot	795	36/1	1.040							
S5630.109E	S5130.109E	AAC	Arbutus	795	37	1.026	30AH	0.50	4.00	4.00	9.74	9.67	E
		AAC	Lilac	795	61	1.028							
		AAC	—	800	37	1.031							
		AAC	Heliotrope	800	61	1.031							
		ACSR	Stilt	715.5	24/7	1.036							
		ACSR	Starling	715.5	26/7	1.051							



230 kV Aluminum Compression Connectors

DOSSERT®

S5600 Series, S5100 Series (cont.)

Terminal Connectors

Ordering Information

CATALOG NUMBER		CONDUCTOR					DIE SIZE ALUMINUM HEX DIE	DIMENSIONS IN INCHES					PAD SIZE
STRAIGHT	15 DEGREE	ACSR OR AAC	CODE WORD	SIZE KCMIL	STRANDING AL/ST	DIAMETER IN INCHES		A	B	C	L	L1	
S5630.109G	S5130.109G	ACSR	Stilt	715.5	24/7	1.036	30AH	0.50	6.00	—	13.75	13.75	G
		ACSR	Starling	715.5	26/7	1.051							
		ACSR	Coot	795	36/1	1.040							
		AAC	Arbutus	795	37	1.026							
		AAC	Lilac	795	61	1.028							
		AAC	—	800	37	1.031							
S5630.116	S5130.116	AAC	Heliotrope	800	61	1.031	30AH	0.50	3.00	—	12.50	11.27	D
		ACSR	Redwing	715.5	30/19	1.081							
		ACSR	Tern	795	45/7	1.063							
		ACSR	Condor	795	54/7	1.093							
		ACSR	Drake	795	26/7	1.108							
		ACSR	Cuckoo	795	24/7	1.092							
S5630.116B	S5130.116B	AAC	Snapdragon	900	61	1.094	30AH	0.69	1.75	—	12.50	12.75	B
		ACSR	Redwing	715.5	30/19	1.081							
		ACSR	Tern	795	45/7	1.063							
		ACSR	Condor	795	54/7	1.093							
		ACSR	Drake	795	26/7	1.108							
		ACSR	Cuckoo	795	24/7	1.092							
—	S5130.116E	AAC	Snapdragon	900	61	1.094	30AH	1.00	4.00	4.50	—	11.22	E
		ACSR	Redwing	715.5	30/19	1.081							
		ACSR	Tern	795	45/7	1.063							
		ACSR	Condor	795	54/7	1.093							
		ACSR	Drake	795	26/7	1.108							
		ACSR	Cuckoo	795	24/7	1.092							
S5630.122	S5130.122	AAC	Snapdragon	900	61	1.094	30AH	0.40	3.00	—	12.50	11.27	D
		ACSR	Mallard	795	30/19	1.140							
		ACSR	Ruddy	900	45/7	1.131							
		ACSR	Canary	900	54/7	1.162							
		ACSR	Catbird	954	36/1	1.140							
		ACSR	Rail	954	45/7	1.165							
		AAC	Magnolia	954	37	1.124							
		AAC	Goldenrod	954	61	1.126							
S5630.122E	—	AAC	Camellia	1000	61	1.152	30AH	0.50	4.00	4.00	10.05	—	E
		AAC	Bluebell	1033.5	37	1.170							
		AAC	Larkspur	1033.5	61	1.172							
		ACSR	Mallard	795	30/19	1.140							
		ACSR	Ruddy	900	45/7	1.131							
		ACSR	Canary	900	54/7	1.162							
		ACSR	Catbird	954	36/1	1.140							
		ACSR	Rail	954	45/7	1.165							
—	S5130.122E	AAC	Magnolia	954	37	1.124	30AH	1.00	4.00	4.50	—	11.27	E
		AAC	Goldenrod	954	61	1.126							
		AAC	Camellia	1000	61	1.152							
		AAC	Bluebell	1033.5	37	1.170							
		AAC	Larkspur	1033.5	61	1.172							
		ACSR	Mallard	795	30/19	1.140							
		ACSR	Ruddy	900	45/7	1.131							
		ACSR	Canary	900	54/7	1.162							
S5630.125	S5130.125	ACSR	Catbird	954	36/1	1.140	30AH	0.40	3.00	—	12.50	11.27	B
		ACSR	Cardinal	954	54/7	1.196							
S5630.125E	—	ACSR	Tanager	1033.5	36/1	1.186	30AH	0.50	4.00	4.00	10.03	—	E
		ACSR	Cardinal	954	54/7	1.196							
—	S5130.125E	ACSR	Tanager	1033.5	36/1	1.186	30AH	1.00	4.00	4.50	—	11.25	E
		ACSR	Cardinal	954	54/7	1.196							



230 kV Aluminum Compression Connectors

DOSSERT®

S5600 Series, S5100 Series (cont.)

Terminal Connectors

Ordering Information

CATALOG NUMBER		CONDUCTOR					DIE SIZE ALUMINUM HEX DIE	DIMENSIONS IN INCHES					PAD SIZE
STRAIGHT	15 DEGREE	ACSR OR AAC	CODE WORD	SIZE KCMIL	STRANDING AL/ST	DIAMETER IN INCHES		A	B	C	L	L1	
S5634.128	S5134.128	ACSR	Ortolan	1033.5	45/7	1.212	34AH	0.60	3.00	—	12.20	12.44	D
		AAC	Marigold	1113	61	1.216							
S5634.134	S5134.134	ACSR	Curlew	1033.5	54/7	1.244	34AH	0.60	3.00	—	12.20	12.44	D
		ACSR	Bluejay	1113	45/7	1.259							
		AAC	Hawthorn	1192.5	61	1.258							
		AAC	Narcissus	1272	61	1.300							
		ACSR	Curlew	1033.5	54/7	1.244							
S5634.134E	S5134.134E	ACSR	Bluejay	1113	45/7	1.259	34AH	1.00	4.00	4.50	11.02	10.83	E
		AAC	Hawthorn	1192.5	61	1.258							
		AAC	Narcissus	1272	61	1.300							
		ACSR	Bunting	1192.5	45/7	1.302							
S5634.138	S5134.138	ACSR	Finch	1113	54/19	1.293	34AH	0.60	3.00	—	12.20	12.44	D
		ACSR	Bittern	1272	45/7	1.345							
		ACSR	Grackle	1192.5	54/19	1.333							
S5636.144	S5136.144	AAC	Columbine	1351	61	1.340	36AH	0.60	3.00	—	13.76	12.50	D
		AAC	Carnation	1431	61	1.379							
		ACSR	Bittern	1272	45/7	1.345							
S5636.144E	S5136.144E	ACSR	Grackle	1192.5	54/19	1.333	36AH	1.00	4.00	4.50	10.85	10.73	E
		AAC	Columbine	1351	61	1.340							
		AAC	Carnation	1431	61	1.379							
		ACSR	Pheasant	1272	54/19	1.382							
S5636.147	S5136.147	ACSR	Dipper	1351.5	45/7	1.386	36AH	0.60	3.00	—	13.76	12.50	D
		ACSR	—	1500	91	1.412							
		AAC	Gladiolus	1510.5	61	1.187							
S5638.150	S5138.150	ACSR	Martin	1351.5	54/19	1.424	38AH	0.80	3.00	—	13.94	13.69	D
		ACSR	Bobolink	1431	45/7	1.427							
S5638.150E	S5138.150E	ACSR	Martin	1351.5	54/19	1.424	38AH	1.00	4.00	4.50	11.44	13.69	E
		ACSR	Bobolink	1431	45/7	1.427							
S5638.156	S5138.156	ACSR	Plover	1431	54/19	1.465	38AH	0.70	3.00	—	13.94	13.69	D
		ACSR	Nuthatch	1510.5	45/7	1.466							
		AAC	Coreopsis	1590	61	1.250							
		AAC	Dogwood	1590	91	1.454							
		ACSR	Plover	1431	54/19	1.465							
S5638.156E	S5138.156E	ACSR	Nuthatch	1510.5	45/7	1.466	38AH	1.00	4.00	4.50	11.41	14.69	E
		AAC	Coreopsis	1590	61	1.250							
		AAC	Dogwood	1590	91	1.454							
		ACSR	Parrot	1510.5	54/19	1.506							
S5640.162	S5140.162	ACSR	Lapwing	1590	45/7	1.504	40AH	0.70	4.00	4.50	15.58	14.88	E
		ACSR	Falcon	1590	54/19	1.545							
		AAC	Jessamine	1750	61	1.525							
		ACSR	Parrot	1510.5	54/19	1.506							
S5640.162E	S5140.162E	ACSR	Lapwing	1590	45/7	1.504	40AH	1.00	4.00	4.50	11.83	11.92	E
		ACSR	Falcon	1590	54/19	1.545							
		AAC	Jessamine	1750	61	1.525							
		ACSR	Chukar	1780	84/19	1.602							
S5642.178	S5142.178	ACSR	—	2034	72/7	1.681	42AH	0.66	4.00	4.50	15.91	15.50	E
		AAC	Cowslip	2000	91	1.630							
		ACSR	Kiwi	2167	72/7	1.737							
S5644.181	S5144.181	AAC	Sagebrush	2250	91	1.729	44AH	0.70	4.00	4.50	17.84	16.00	E
		AAC	—	2300	61	1.750							
		AAC	—	2300	91	1.750							
		ACSR	Bluebird	2156	84/19	1.762							
S5644.184	S5144.184	ACSR	Thrasher	2312	76/19	1.802	44AH	0.72	4.00	4.50	17.84	16.00	E
		ACSR	Lupine	2500	91	1.823							
S5648.197	S5148.197	ACSR	Joree	2515	76/19	1.880	48AH	0.80	4.00	4.50	18.72	17.31	E
		AAC	Bitterroot	2750	91	1.912							