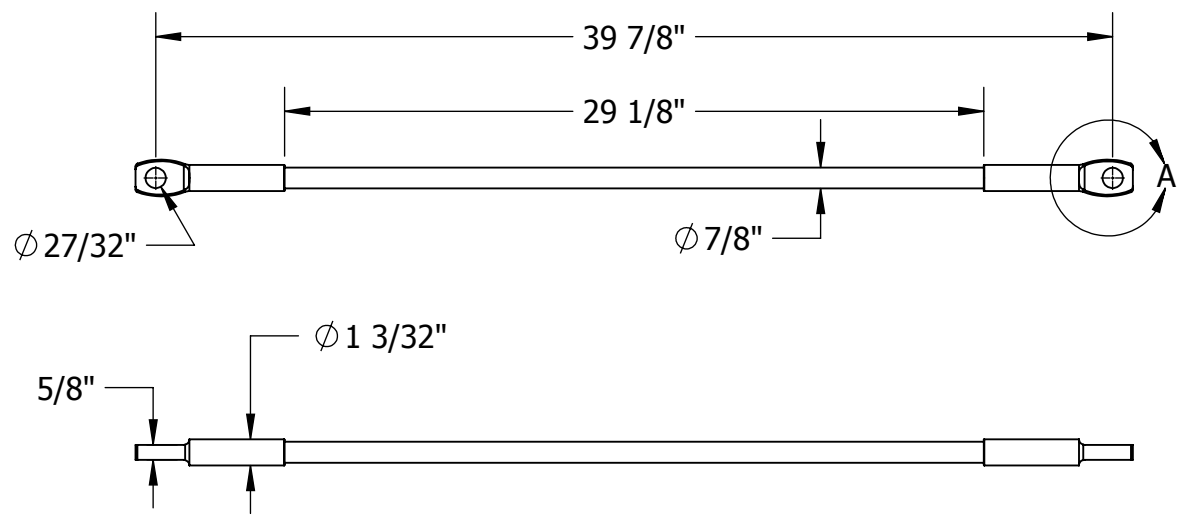
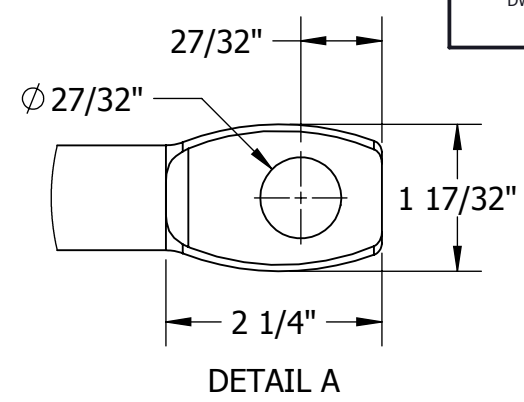
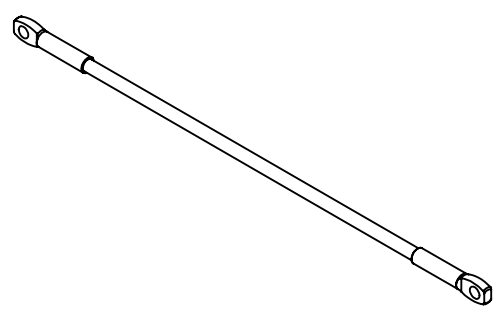


THIS DRAWING AND ALL INFORMATION ON IT IS THE PROPERTY OF AFL. IT IS CONFIDENTIAL AND IT IS GIVEN TO YOU FOR A LIMITED PURPOSE AND MUST BE RETURNED UPON REQUEST. NEITHER THIS DRAWING OR ANY PART OF IT NOR ANY INFORMATION CONCERNING IT MAY BE COPIED, EXHIBITED, OR FURNISHED TO OTHERS NOR PHOTOGRAPHS TAKEN OF ANY ARTICLE FABRICATED OR ASSEMBLED FROM THE DRAWING WITHOUT THE CONSENT OF AFL.

ITEM NO:
DWG. NO:



MATERIAL:
 EYE END - STAINLESS STEEL
 INSULATOR ROD - 5/8" EPOXY - FIBERGLASS
 TEFLON JACKET - PTFE

MECHANICAL RATINGS:
 PROOF LOAD: 20,000 LBS

ELECTRICAL RATINGS:
 VOLTAGE RATINGS: 25 kV AC

WT: 2.74 LB

LOCATION	CONTRACT NO	CUST / CONTR
----------	-------------	--------------

REVISIONS					DRN BY: HV
REV	DESCRIPTION	DATE	BY	APR	
					DRN DATE: 7.20.17
					CHK BY: JL
					CHK DATE: 7.20.17
					PA 2015.231.0

INSULATOR STRAIN, 5/8" EYE/EYE, INLINE SML 20K	
REV 0	PART NO: INS63-KC3988-STD
1 OF 1	