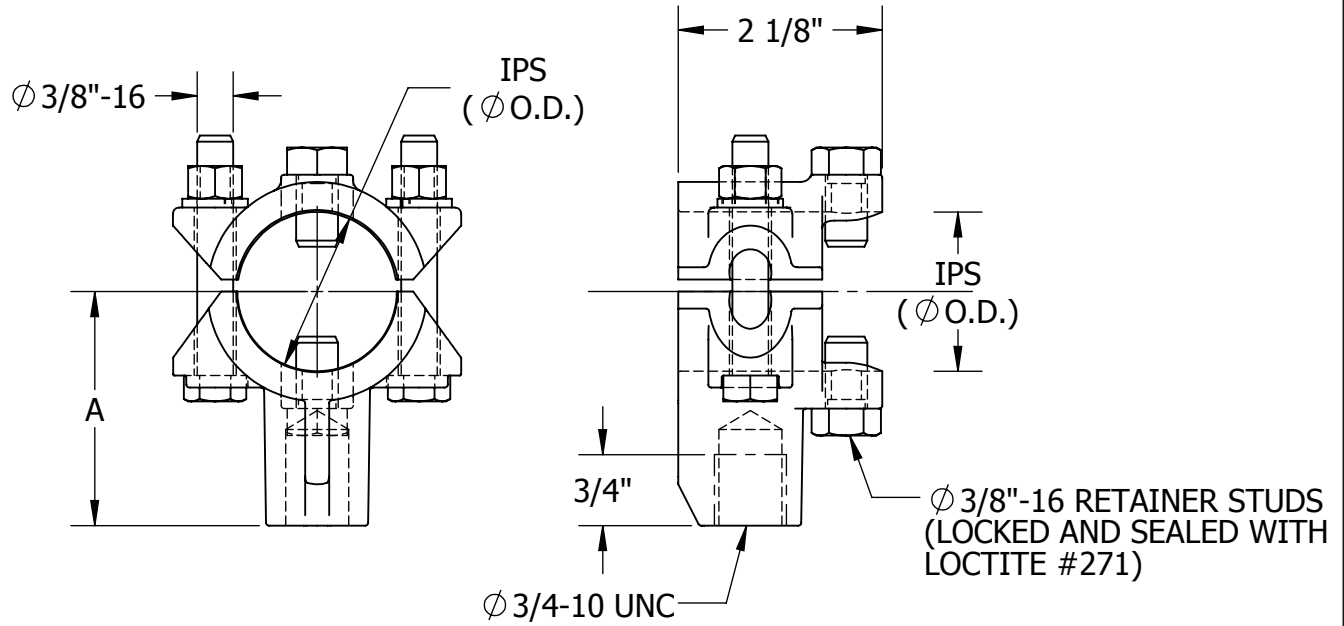


THIS DRAWING AND ALL INFORMATION ON IT IS THE PROPERTY OF AFL. IT IS CONFIDENTIAL AND IT IS GIVEN TO YOU FOR A LIMITED PURPOSE AND MUST BE RETURNED UPON REQUEST. NEITHER THIS DRAWING OR ANY PART OF IT NOR ANY INFORMATION CONCERNING IT MAY BE COPIED, EXHIBITED, OR FURNISHED TO OTHERS NOR PHOTOGRAPHS TAKEN OF ANY ARTICLE FABRICATED OR ASSEMBLED FROM THE DRAWING WITHOUT THE CONSENT OF AFL.

ITEM NO:

DWG. NO:

D-7010



ITEM NO.	PART NUMBER	DIMENSIONS IN INCHES		
		IPS	O.D.	A
	CCH075-38-CS	3/4	1.050	1 1/2
	CCH100-38-CS	1	1.315	1 1/2
	CCH125-38-CS	1 1/4	1.660	2 7/16
	CCH150-38-CS	1 1/2	1.990	2 7/16
	CCH200-38-CS	2	2.375	2 7/8

MATERIAL:

ALUMINUM BRONZE ASTM B30

BOLTS, NUTS & LOCKWASHERS - SILICON BRONZE

BOLT SIZES	WRENCH/ SOCKET SIZES	TORQUE VALUES (FT-LBS)
3/8-16	9/16 HEX	19

LOCATION

CONTRACT NO

CUST / CONTR

REVISIONS

REV	DESCRIPTION	DATE	BY	APR

DRN BY:

BB

DRN DATE:

07/20/2017

CHK BY:

HJ

CHK DATE:

07/20/2017

PA 2015.231.0

AFL

DOSSERT®

CLAMP, STEADY ARM, CONTACT WIRE HOLDER

REV
0

PART NO:

CCH-38-CS-SERIES

1 OF 1