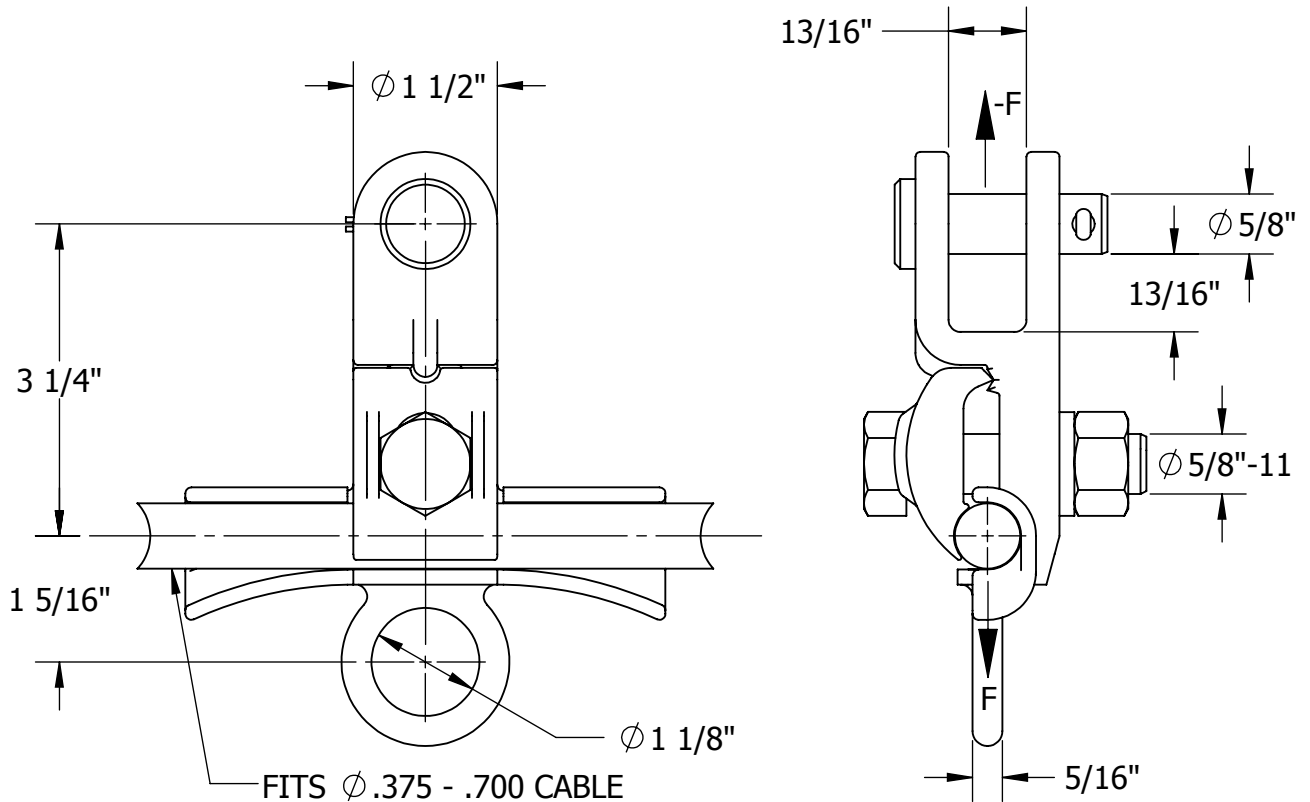


THIS DRAWING AND ALL INFORMATION ON IT IS THE PROPERTY OF AFL. IT IS CONFIDENTIAL AND IT IS GIVEN TO YOU FOR A LIMITED PURPOSE AND MUST BE RETURNED UPON REQUEST. NEITHER THIS DRAWING OR ANY PART OF IT NOR ANY INFORMATION CONCERNING IT MAY BE COPIED, EXHIBITED, OR FURNISHED TO OTHERS NOR PHOTOGRAPHS TAKEN OF ANY ARTICLE FABRICATED OR ASSEMBLED FROM THE DRAWING WITHOUT THE CONSENT OF AFL.

ITEM NO:

DWG. NO:

D-5877



MATERIAL:

BODY & CLAMP - ALUMINUM BRONZE ASTM B30

NUT - SILICON BRONZE

COTTER PIN, BOLT & LOCKWASHER - STAINLESS STEEL

CLEVIS PIN - STEEL, H.D.G*


MECHANICAL RATINGS:

MIN. ULTIMATE STRENGTH (F): 8,500 LBS

BOLT SIZES	WRENCH/ SOCKET SIZES	TORQUE VALUES (FT-LBS)
5/8-11	15/16 HEX	86

WT: 2.3 LB

* = HOT DIP GALVANIZED

THIS DRAWING ASSAYS	LOCATION					CONTRACT NO		CUST / CONTR	
	REVISIONS					DRN BY: BR DRN DATE: 8.1.17 CHK BY: GC CHK DATE: 8.1.17 PA 2015.231.0			
	REV	DESCRIPTION	DATE	BY	APR		CLAMP, SUSPENSION, .375" TO .700 DIA CABLE, W/ CLEVIS / EYE LINK, BRZ		
					REV		PART NO:	SHBS700-63-CE	