



## Table of Contents

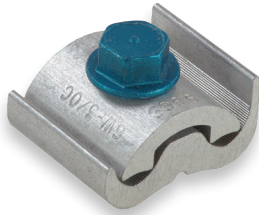
Clamps and Connectors Pictorial Index . . . . .	542
Universal Groove Clamps Overview . . . . .	543
Distribution Parallel Groove Clamps . . . . .	544
Center Bolt Clamps . . . . .	544
U-Bolt Clamps . . . . .	545

### Pictorial Index

#### **CLAMPS AND CONNECTORS**

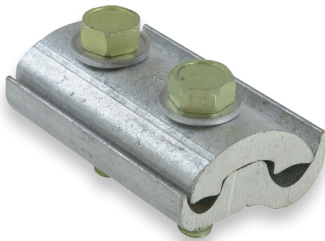
##### ***Distribution Parallel Groove Clamps***

pg. 542



##### ***Center Bolt Clamps***

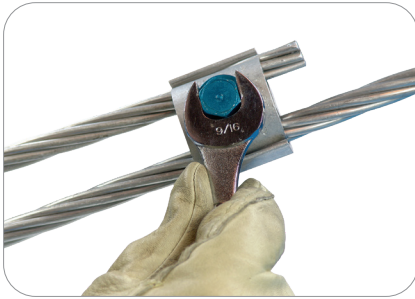
pgs. 542



##### ***U-Bolt Clamps***

pg. 543



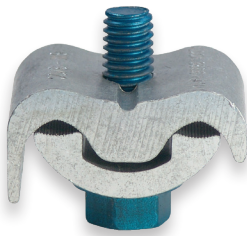


## Universal Groove Clamps

Through extensive research, AFL has developed a "universal groove" design which accept a range of conductor sizes. The blended radii proved to be the shape that accommodates a wide range of conductors and have the desired low electrical resistance for each conductor size. This patented groove shape is utilized in all of AFL's clamps and connectors.

### Positive Alignment and Weather Protection

Extended lip aligns clamp as bolt is tightened. Clamp base section forms a weather shield for the grooves. Compound stays in place, connections last longer.



### Corrosion Resistant Lubricated Hardware

Bolts are made of high-strength aluminum alloy and maintain high contact pressure during heating and cooling cycles (bolts, extrusions and conductors have the same coefficients). Bolts have an Alumilite 205 finish and are coated with a lubricant for additional corrosion protection and reduced friction.

### No Loose Parts

Extruded clamps can be applied "hot" without taking them apart. No losing nuts or washers or fumbling for loose parts.



### Conductance

The electrical conductivity of the heavy-duty 480 Series clamps exceeds that of the conductor. Each clamp is designed and tested for the conductor sizes in its stated range.

### Groove Range Identification

Raised ridges on both sides of the cap and base of multiple bolt clamps identify groove range sizes. The two ridges visible on the clamp in the photo on the left, indicate a No. 2 groove with a range of .464" to .743" (11.8 mm to 18.9 mm).

### Greater Strength

Aluminum extrusions have the inherently strong construction of wrought metal. For parallel groove clamps, a tough heat-treated alloy is used.

### Available Prefilled

All clamps are available with Alnox Joint Compound in the grooves. Clamps with equal grooves are available in "strip" packages (shown). These packages retain the compound until ready for use and are easily removed while wearing gloves. All clamps are available poly wrapped in polyethylene shrink packaging.



### Minimum Sizes to Stock

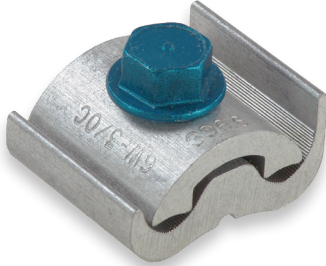
Minimum number of clamps to cover No. 8 AWG to 1750 MCM connecting applications.

### No Loose Parts

Compact assembly simplifies taping and handling resulting in a neater, more professional job.



## Distribution Parallel Groove Clamps (Series 390 and 490)

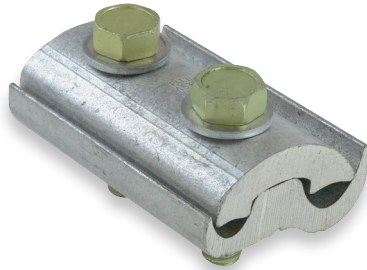


Catalog 390 and Catalog 490 Series Distribution Parallel Groove Clamps with a single bolt accommodate a range of conductors in each groove. This type of clamp is commonly used for service drop connections and as a tap from large to relatively small conductors.

AFL NO.	GROOVE SIZE* – RUN 1 –	GROOVE SIZE* – TAP 2 –	BOLT SIZE (in)	TORQUE (ft / lbs)	NOMINAL WEIGHT	
					(lb)	(Kg)
490.0	0	0	5/16"	10	.060	.03
395.5	5	5	3/8"	15	.092	.04
396.6	6	6	3/8"	15	.129	.06
392.6	2	6	1/2"	25	.316	.14
393.6	3	6	5/8"	40	.642	.29

\* Groove size designation on following page.

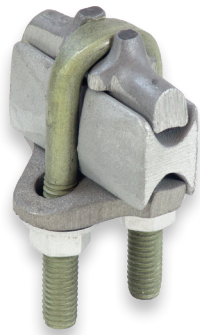
## Center Bolt Clamps (Series 480)



Catalog 480 Series Center Bolt Clamps are a multiple bolt heavy duty universal groove design which can handle the full electrical load of the conductor. They offer the convenience of installation without any loose parts. Catalog 480 Clamps are made from extruded high strength aluminum alloy and can be taped easily. Additionally, they have a minimum bulk, which results in a neat appearance.

AFL NO.	GROOVE SIZE* – SIDE 1 –	GROOVE SIZE* – SIDE 2 –	NUMBER OF BOLTS	BOLT SIZE (in)	TORQUE (ft / lbs)	NOMINAL WEIGHT	
						(lb)	(Kg)
481.0	1	0	2	3/8"	15	0.3	.14
481.1	1	1	2	3/8"	15	0.3	.14
482.1	2	1	2	1/2"	25	0.6	.27
482.2	2	2	3	1/2"	25	1.1	.50
483.2	3	2	2	5/8"	40	1.8	.82
483.3	3	3	3	5/8"	40	2.8	1.27

\* Groove size designation on following page.



## U-Bolt Clamps (Series 580)

Catalog 580 Series U-Bolt Clamps are heavy duty, high efficiency connectors with AFL full-capacity grooves. The U-Bolts are high strength aluminum alloy for excellent thermal expansion and corrosion resistance characteristics.

AFL NO.	GROOVE SIZE* – SIDE 1 –	GROOVE SIZE* – SIDE 2 –	NUMBER OF BOLTS	BOLT SIZE (in)	TORQUE (ft / lbs)	NOMINAL WEIGHT	
						(lb)	(Kg)
581.1	1	1	1	3/8"	15	.3	.14
582.1	2	1	1	1/2"	25	.6	.27
582.2	2	2	2	1/2"	25	1.3	.59
583.1	3	1	1	5/8"	40	1.1	.50
583.2	3	2	2	5/8"	40	2.6	1.18
583.3	3	3	3	5/8"	40	3.9	1.77
584.1	4	1	1	5/8"	40	1.7	.77
584.2	4	2	2	5/8"	40	3.6	1.63
584.3	4	3	3	5/8"	40	5.8	2.63
584.4	4	4	3	5/8"	40	6.0	2.72

### Standard Groove Numbers

Standard groove numbers are used for the complete range of clamps and connectors. These numbers are incorporated into the AFL part number itself.

GROOVE SIZE	GROOVE RANGE				CONDUCTOR SIZE			
	MIN		MAX		ACSR		STRANDED ALUMINUM	
	IN	MM	IN	MM	MIN	MAX	MIN	MAX
0	.128	3.3	.325	8.3	6 <sup>6</sup> / <sub>1</sub>	2 <sup>7</sup> / <sub>1</sub>	8 & 8W	2
5	.128	3.3	.398	10.1	6 <sup>6</sup> / <sub>1</sub>	1/0	8 & 8W	1/0
6	.162	4.1	.464	11.8	6 <sup>6</sup> / <sub>1</sub>	2/0 <sup>6</sup> / <sub>1</sub>	6	3/0
1	.292	7.4	.502	12.8	2 <sup>9</sup> / <sub>1</sub>	3/0	2	3/0
7	.368	9.3	.593	15.1	1/0	4/0	1/0	266.8 MCM
2	.464	11.8	.743	18.9	3/0	397 <sup>18</sup> / <sub>1</sub>	3/0	400 MCM
3	.743	18.9	1.152	29.3	397 <sup>18</sup> / <sub>1</sub>	795 <sup>26</sup> / <sub>7</sub>	450 MCM	1,000 MCM
4	1.060	26.9	1.545	39.2	795 <sup>45</sup> / <sub>7</sub>	1590 <sup>54</sup> / <sub>19</sub>	874.5 MCM	1,750 MCM

**NOTE:** NEMA standard abbreviations for aluminum or copper: W = solid conductor, ACSR = aluminum conductor/steel reinforced

## Universal Groove Clamps (cont.)

### Ordering Information

The information below is provided to define the standard configurations available on the previous pages. **NOTE: Bolt type and fill are the only ordering options available.**

Bolt Type	Clamp Series	Groove 1 "Run" Size	Groove 2 "Tap" Size	Fill and Wrap
<b>S</b>	<b>39</b>	<b>6</b>	<b>6</b>	<b>P</b>
Blank = Aluminum Bolt S = Galvanized Bolt	39 = 390 Series 49 = 490 Series 48 = 480 Series	0 = 0 5 = 5 6 = 6 1 = 1 2 = 2 3 = 3 4 = 4	0 = 0 5 = 5 6 = 6 1 = 1 7 = 7 2 = 2 3 = 3 4 = 4	Blank = No Prefill P = Prefill with Alnox Compound and Polywrap W = Prefill with Alnox Compound and Paper Wrap

**EXAMPLE: S396.6P**

**This part number orders:** 390 Series Distribution Parallel Groove Clamp with a #6 groove on the run (1) side and a #6 groove on the tap (2) side, galvanized bolts and prefilled with Alnox Compound and a polywrap.

**NOTES:**

1. To order Parallel Groove Clamps prefilled with Alnox Compound, add P or W suffix to part number.
2. The use of Alnox Compound liberally in grooves and on wire is recommended. Be sure conductors are clean. All conductors (new and old) should be thoroughly cleaned with a wire brush or emery cloth.
3. Extensive field experience and exposure tests show that if a suitable type joint compound is liberally applied over and around the contact area, copper-to-aluminum electric connections can be made satisfactorily with aluminum clamps without copper bushings. Alnox Compound is recommended.