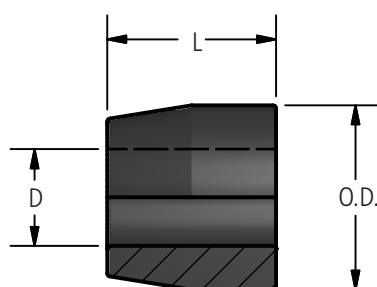
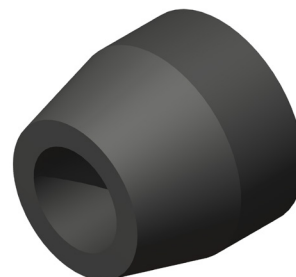


DOSSERT®

Type RLM-2 Insulating Brushing for Use with Renewable Limiter Link Assembly Types RLB-E and RLM-E

An insulating bushing designed to effect a close fit over cable insulation and a close fit within the end of MICON Limiter sleeve, type RLM-1.



Ordering Information

CATALOG NUMBER	FOR USE WITH TYPE NUMBER	DIMENSIONS IN INCHES		
		D	L	O.D.
RLM50-2	RLB-E RLM-E	*	1 3/4	1 15/16

* Diameter over cable insulation to be specified on order.