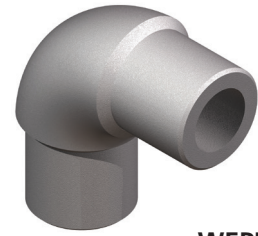


DOSSERT® TYPE WEPI-AA, WEPI-30-AA, WEPI-45-AA, WEPI-60-AA

Aluminum Welded Pipe Elbow

Welded elbows offer an economical method for field fabrication where angular turns are required. Designed for 230 kV service. Elbows are designed with chamfer to provide ease of welding.



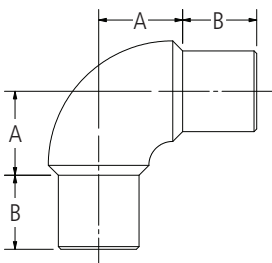
WEPI-AA

Material

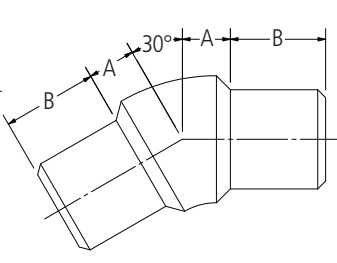
Aluminum Alloy

Notes

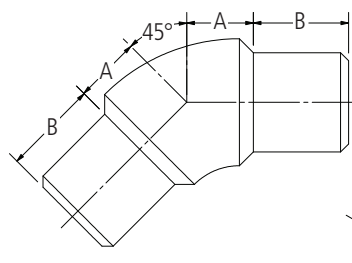
- For a 30°, add '-30'; for a 45°, add '-45'; and for a 60°, add '-60' to catalog number. Ex: WEPI75-45-AA
- For Schedule 80, add 'E' to pipe size. Ex: WEPI75E-AA



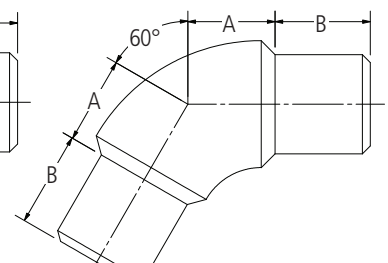
WEPI-AA



WEPI-30-AA



WEPI-45-AA



WEPI-60-AA

Ordering Information

S.P.S.	CATALOG NO.	ANGLE	DIMENSION IN INCHES		E.H.P.S.	CATALOG NO.	ANGLE	DIMENSION IN INCHES	
	SCHEDULE 40		A	B		SCHEDULE 80		A	B
3/4	WEPI75-AA	90°	1.11	0.75	3/4	WEPI75E-AA	90°	1.00	0.75
3/4	WEPI75-30-AA	30°	0.38	0.75	—	—	—	—	—
3/4	WEPI75-45-AA	45°	0.52	0.75	3/4	WEPI75E-45-AA	45°	0.56	0.75
3/4	WEPI75-60-AA	60°	0.69	0.75	—	—	—	—	—
1	WEPI100-AA	90°	1.19	0.75	1	WEPI100E-AA	90°	1.23	0.75
1	WEPI100-30-AA	30°	0.44	0.75	1	WEPI100E-30-AA	30°	0.48	0.75
1	WEPI100-45-AA	45°	0.58	0.75	1	WEPI100E-45-AA	45°	0.63	0.75
1	WEPI100-60-AA	60°	0.75	0.75	1	WEPI100E-60-AA	60°	0.80	0.75
1 1/4	WEPI125-AA	90°	1.38	1.00	1 1/4	WEPI125E-AA	90°	1.42	1.00
1 1/4	WEPI125-30-AA	30°	0.50	1.00	1 1/4	WEPI125E-30-AA	30°	0.56	1.00
1 1/4	WEPI125-45-AA	45°	0.68	1.00	1 1/4	WEPI125E-45-AA	45°	0.73	1.00
1 1/4	WEPI125-60-AA	60°	0.87	1.00	1 1/4	WEPI125E-60-AA	60°	0.92	1.00
1 1/2	WEPI150-AA	90°	1.57	1.00	1 1/2	WEPI150E-AA	90°	1.63	1.00
1 1/2	WEPI150-30-AA	30°	0.56	1.00	1 1/2	WEPI150E-30-AA	30°	0.63	1.00
1 1/2	WEPI150-45-AA	45°	0.76	1.00	1 1/2	WEPI150E-45-AA	45°	0.83	1.00
1 1/2	WEPI150-60-AA	60°	0.99	1.00	1 1/2	WEPI150E-60-AA	60°	1.05	1.00



DOSSERT®

TYPE WEPI-AA, WEPI-30-AA, WEPI-45-AA, WEPI-60-AA

Aluminum Welded Pipe Elbow

Ordering Information

S.P.S.	CATALOG NO.	ANGLE	DIMENSION IN INCHES		E.H.P.S.	CATALOG NO.	ANGLE	DIMENSION IN INCHES	
	SCHEDULE 40		A	B		SCHEDULE 80		A	B
2	WEPI200-AA	90°	1.92	1.75	2	WEPI200E-AA	90°	1.98	1.75
2	WEPI200-30-AA	30°	0.64	1.75	2	WEPI200E-30-AA	30°	0.70	1.75
2	WEPI200-45-AA	45°	0.89	1.75	2	WEPI200E-45-AA	45°	0.96	1.75
2	WEPI200-60-AA	60°	1.17	1.75	2	WEPI200E-60-AA	60°	1.24	1.75
2 1/2	WEPI250-AA	90°	2.51	1.75	2 1/2	WEPI250E-AA	90°	2.54	1.75
2 1/2	WEPI250-30-AA	30°	0.78	1.75	2 1/2	WEPI250E-30-AA	30°	0.84	1.75
2 1/2	WEPI250-45-AA	45°	1.08	1.75	2 1/2	WEPI250E-45-AA	45°	1.14	1.75
2 1/2	WEPI250-60-AA	60°	1.42	1.75	2 1/2	WEPI250E-60-AA	60°	1.46	1.75
3	WEPI300-AA	90°	2.52	1.75	3	WEPI300E-AA	90°	2.56	1.75
3	WEPI300-30-AA	30°	0.89	1.75	3	WEPI300E-30-AA	30°	0.96	1.75
3	WEPI300-45-AA	45°	1.23	1.75	3	WEPI300E-45-AA	45°	1.31	1.75
3	WEPI300-60-AA	60°	1.52	1.75	3	WEPI300E-60-AA	60°	1.56	1.75
3 1/2	WEPI350-AA	90°	2.87	1.75	3 1/2	WEPI350E-AA	90°	2.96	1.75
3 1/2	WEPI350-30-AA	30°	0.95	1.75	3 1/2	WEPI350E-30-AA	30°	1.04	1.75
3 1/2	WEPI350-45-AA	45°	1.33	1.75	3 1/2	WEPI350E-45-AA	45°	1.42	1.75
3 1/2	WEPI350-60-AA	60°	1.76	1.75	3 1/2	WEPI350E-60-AA	60°	1.85	1.75
4	WEPI400-AA	90°	3.02	2.06	4	WEPI400E-AA	90°	3.08	2.06
4	WEPI400-30-AA	30°	1.12	2.00	4	WEPI400E-30-AA	30°	1.23	2.00
4	WEPI400-45-AA	45°	1.60	2.00	4	WEPI400E-45-AA	45°	1.70	2.00
4	WEPI400-60-AA	60°	1.81	2.06	4	WEPI400E-60-AA	60°	1.87	2.06
5	WEPI500-AA	90°	3.82	2.44	5	WEPI500E-AA	90°	3.94	2.44
5	WEPI500-30-AA	30°	1.24	2.44	5	WEPI500E-30-AA	30°	1.35	2.44
5	WEPI500-45-AA	45°	1.75	2.44	5	WEPI500E-45-AA	45°	1.87	2.44
5	WEPI500-60-AA	60°	2.33	2.44	5	WEPI500E-60-AA	60°	2.45	2.44
6	WEPI600-AA	90°	4.31	2.75	6	WEPI600E-AA	90°	4.38	2.75
6	WEPI600-30-AA	30°	1.29	2.75	6	WEPI600E-30-AA	30°	1.36	2.75
6	WEPI600-45-AA	45°	1.89	2.75	6	WEPI600E-45-AA	45°	1.97	2.75
6	WEPI600-60-AA	60°	2.57	2.75	6	WEPI600E-60-AA	60°	2.64	2.75
8	WEPI800-AA	90°	5.64	1.00	—	—	—	—	—
8" O.D.	WEPI800R-AA	90°	5.50	2.00	—	—	—	—	—
8" O.D.	WEPI800R-30-AA	30°	1.88	2.00	—	—	—	—	—
8" O.D.	WEPI800R-60-AA	60°	3.38	1.00	—	—	—	—	—

230 kV Al. Welded Elbows