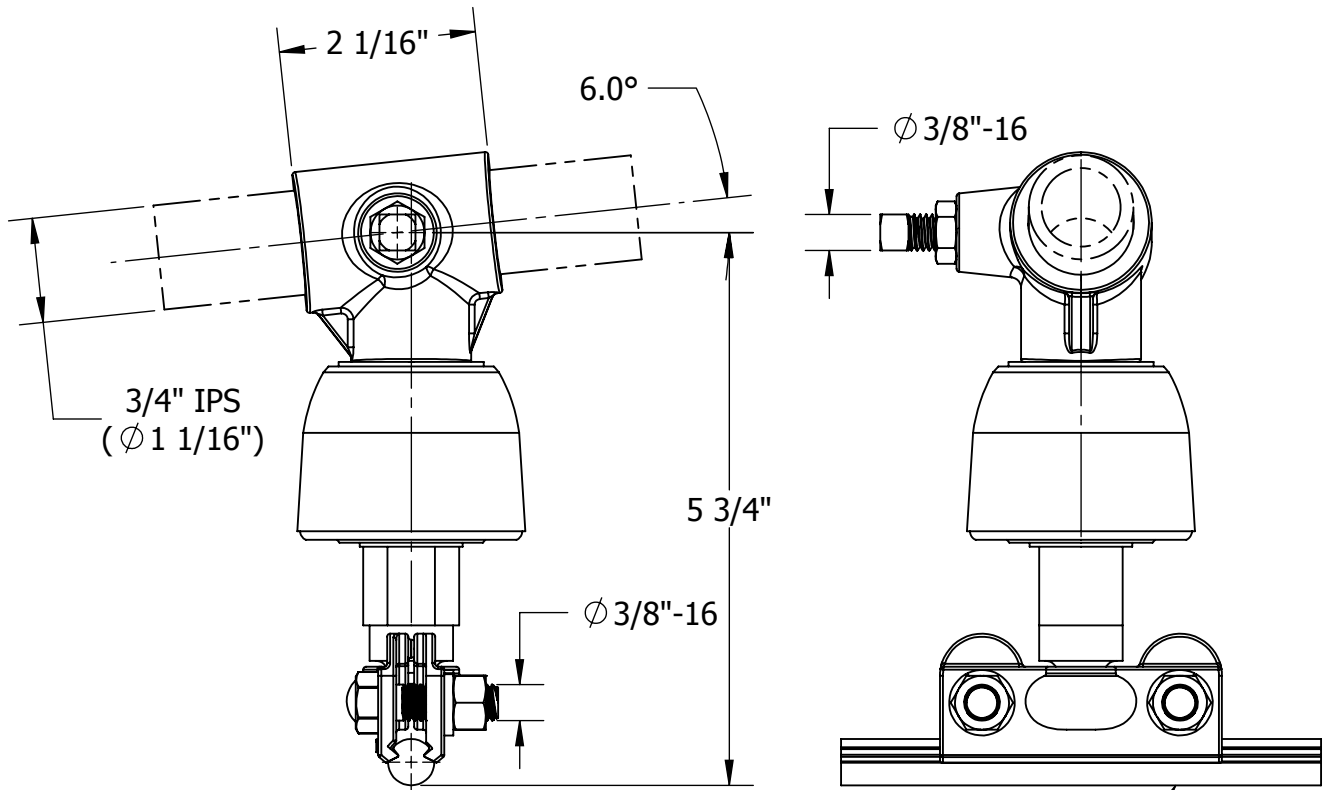


THIS DRAWING AND ALL INFORMATION ON IT IS THE PROPERTY OF AFL. IT IS CONFIDENTIAL AND IT IS GIVEN TO YOU FOR A LIMITED PURPOSE AND MUST BE RETURNED UPON REQUEST. NEITHER THIS DRAWING OR ANY PART OF IT NOR ANY INFORMATION CONCERNING IT MAY BE COPIED, EXHIBITED, OR FURNISHED TO OTHERS NOR PHOTOGRAPHS TAKEN OF ANY ARTICLE FABRICATED OR ASSEMBLED FROM THE DRAWING WITHOUT THE CONSENT OF AFL.

ITEM NO:

DWG. NO:



4/0 - 350 MCM GROOVED CONTACT WIRE

MATERIAL:

SWIVEL CLAMP - ALUMINUM BRONZE ASTM B30
 PIPE CLAMP - ALUMINUM ALLOY ASTM B26
 BOLTS, NUTS & LOCKWASHERS - SILICON BRONZE
 BOLT, JAMNUT & STUD - STAINLESS STEEL

ELECTRICAL RATINGS:

VOLTAGE RATINGS: 750 VDC
 LEAKAGE DISTANCE: 2.44 IN
 DRY FLASHOVER: 25kV
 WET FLASHOVER: 15kV(HORZ), 12kV(VERT)
 ULTIMATE PUNCTURE: 35kV (TESTED IN OIL)

BOLT SIZES	WRENCH/ SOCKET SIZES	TORQUE VALUES (FT-LBS)
3/8-16	9/16 HEX	21
5/8-11	15/16 HEX	97

WT: 3.38 LB

REVISIONS					DRN BY:	CONTRACT NO		CUST / CONTR	
REV	DESCRIPTION	DATE	BY	APR	HV	FAFL DOSSERT®		CLAMP, INSULATED CONTACT SWIVEL, AL	
					DRN DATE:				
					10.27.14	REV 0		PART NO: CSCA075-LS02-AA	
					CHK BY:				
					JL	1 OF 1			
					CHK DATE:				
					10.27.14	REV 0		PART NO: CSCA075-LS02-AA	
					PA 2017.270.0				