

DOSSERT®

TYPE HSC, HS2C, HS3C

Copper Stud Connector for Cable or Wire. HSC connects one conductor to a stud, HS2C connects two conductors to a stud, and HS3C connects three conductors to a stud.

A HERCULON™ variable type connector for joining a cable or a wire to a threaded stud. The stud end of the connector can also be furnished to accommodate a plain stud or pipe.

Material

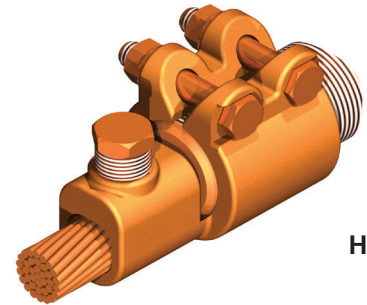
Copper Alloy

Hardware

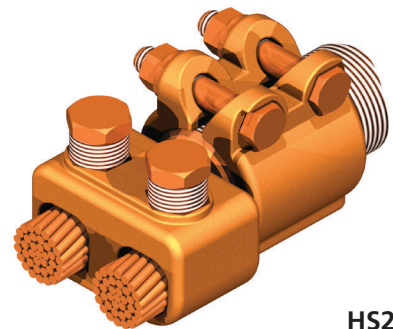
Everdur bolts, nuts and lockwashers

Notes

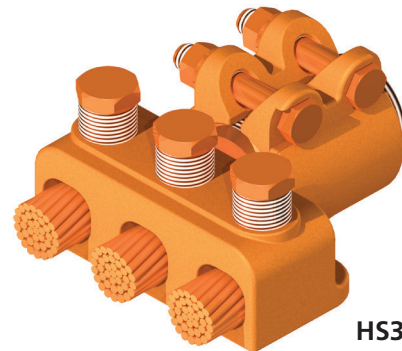
- Other sizes of studs and various threads to the inch can be promptly furnished.
- For two 500 MCM cables to a .75" T16 stud order HS2C75-50-T16
- For three 500 MCM cables to a .75" T16 stud order HS3C75-50-T16
- For two 500 MCM cables to a .75" T0 stud order HS2C75-50-T0



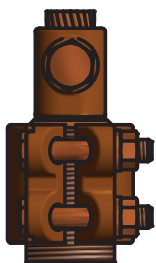
HSC



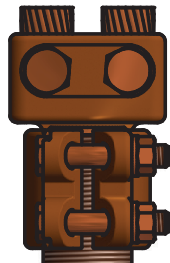
HS2C



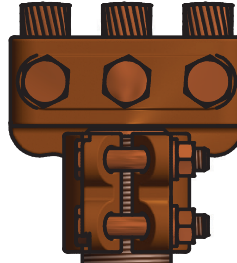
HS3C



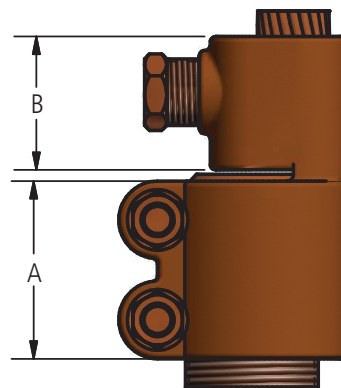
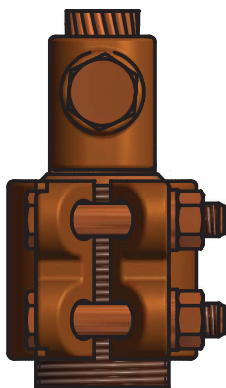
HSC



HS2C



HS3C



DOSSERT®

TYPE HSC, HS2C, HS3C

Copper Stud Connector for Cable or Wire. HSC connects one conductor to a stud, HS2C connects two conductors to a stud, and HS3C connects three conductors to a stud.

Ordering Information

CATALOG NUMBER			STUD DIA	THREADS PER INCH	CABLE RANGE		DIMENSIONS IN INCHES		BOLT SIZE
HSC	HS2C	HS3C			MIN	MAX	A	B	
HSC50-4-T13	HS2C50-4-T13	HS3C50-4-T13	1/2	13	8 Solid	4 Stranded	2	5/8	3/8
HSC50-8-T13	HS2C50-8-T13	HS3C50-8-T13	1/2	13	4 Solid	1 Stranded	2	7/8	3/8
HSC50-13-T13	HS2C50-13-T13	HS3C50-13-T13	1/2	13	1 Stranded	2/0 Stranded	2	1	3/8
HSC50-21-T13	HS2C50-21-T13	HS3C50-21-T13	1/2	13	2/0 Stranded	4/0 Stranded	2	1 1/8	3/8
HSC63-13-T18	HS2C63-13-T18	HS3C63-13-T18	5/8	18	1 Stranded	2/0 Stranded	2	1	3/8
HSC63-21-T18	HS2C63-21-T18	HS3C63-21-T18	5/8	18	2/0 Stranded	4/0 Stranded	2	1 1/8	3/8
HSC63-30-T18	HS2C63-30-T18	HS3C63-30-T18	5/8	18	4/0 Stranded	300 MCM	2	1 9/32	3/8
HSC75-13-T16	HS2C75-13-T16	HS3C75-13-T16	3/4	16	1 Stranded	2/0 Stranded	2	1	3/8
HSC75-21-T16	HS2C75-21-T16	HS3C75-21-T16	3/4	16	2/0 Stranded	4/0 Stranded	2	1 1/8	3/8
HSC75-30-T16	HS2C75-30-T16	HS3C75-30-T16	3/4	16	4/0 Stranded	300 MCM	2	1 9/32	3/8
HSC75-50-T16	HS2C75-50-T16	HS3C75-50-T16	3/4	16	300 MCM	500 MCM	2	1 1/2	3/8
HSC100-13-T14	HS2C100-13-T14	HS3C100-13-T14	1	14	1 Stranded	2/0 Stranded	2	1	3/8
HSC100-21-T14	HS2C100-21-T14	HS3C100-21-T14	1	14	2/0 Stranded	4/0 Stranded	2	1 1/8	3/8
HSC100-30-T14	HS2C100-30-T14	HS3C100-30-T14	1	14	4/0 Stranded	300 MCM	2	1 9/32	3/8
HSC100-50-T14	HS2C100-50-T14	HS3C100-50-T14	1	14	300 MCM	500 MCM	2	1 1/2	3/8
HSC100-75-T14	HS2C100-75-T14	HS3C100-75-T14	1	14	500 MCM	750 MCM	2	1 5/8	3/8
HSC125-21-T12	HS2C125-21-T12	HS3C125-21-T12	1 1/4	12	2/0 Stranded	4/0 Stranded	2	1 1/8	3/8
HSC125-30-T12	HS2C125-30-T12	HS3C125-30-T12	1 1/4	12	4/0 Stranded	300 MCM	2	1 9/32	3/8
HSC125-50-T12	HS2C125-50-T12	HS3C125-50-T12	1 1/4	12	300 MCM	500 MCM	2	1 1/2	3/8
HSC125-75-T12	HS2C125-75-T12	HS3C125-75-T12	1 1/4	12	500 MCM	750 MCM	2	1 5/8	3/8
HSC125-100-T12	HS2C125-100-T12	HS3C125-100-T12	1 1/4	12	750 MCM	1000 MCM	2 3/4	1 15/16	1/2
HSC150-30-T12	HS2C150-30-T12	HS3C150-30-T12	1 1/2	12	4/0 Stranded	300 MCM	2	1 9/32	3/8
HSC150-50-T12	HS2C150-50-T12	HS3C150-50-T12	1 1/2	12	300 MCM	500 MCM	2	1 1/2	3/8
HSC150-75-T12	HS2C150-75-T12	HS3C150-75-T12	1 1/2	12	500 MCM	750 MCM	2	1 5/8	3/8
HSC150-100-T12	HS2C150-100-T12	HS3C150-100-T12	1 1/2	12	750 MCM	1000 MCM	2 3/4	1 15/16	1/2