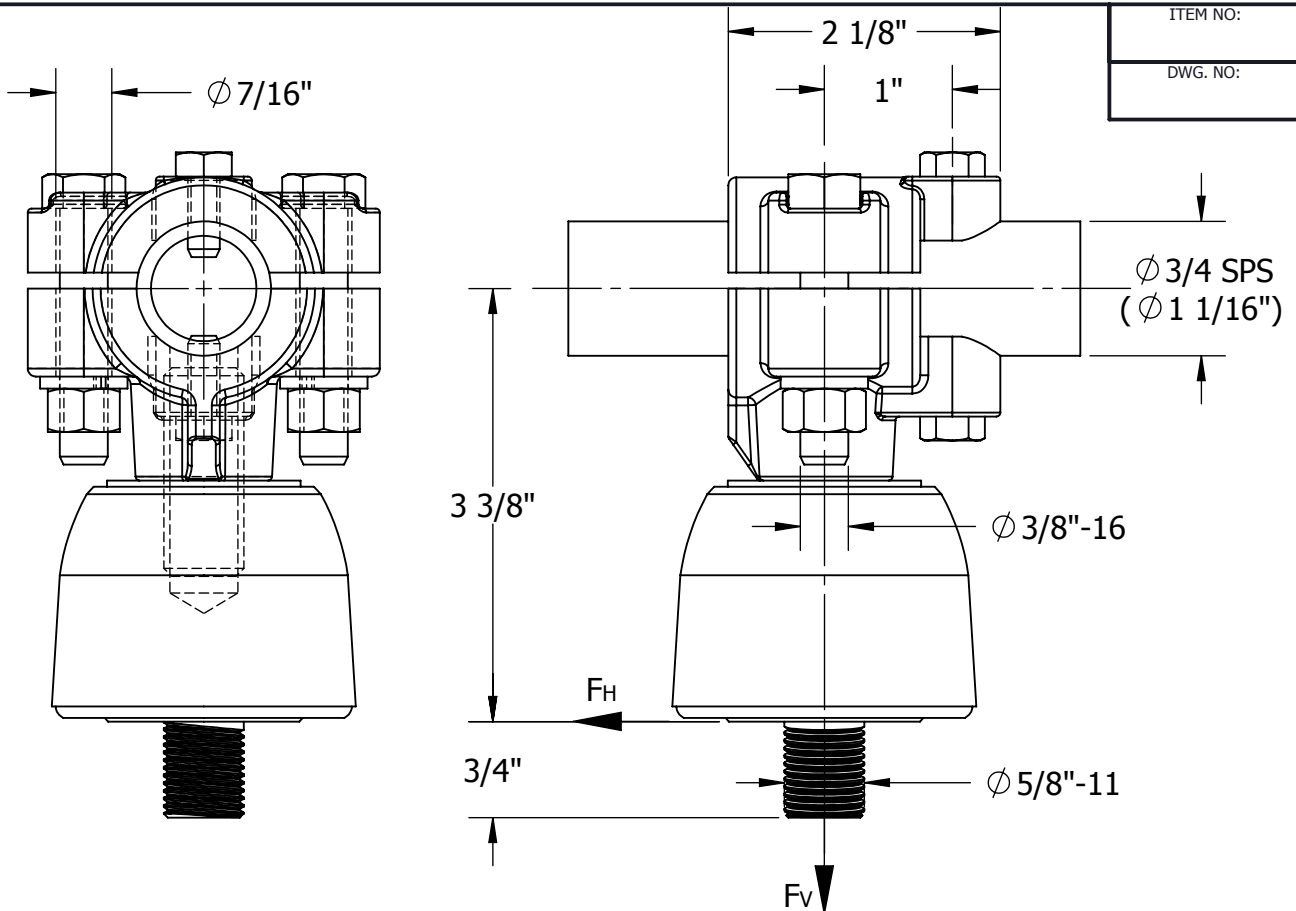


THIS DRAWING AND ALL INFORMATION ON IT IS THE PROPERTY OF AFL. IT IS CONFIDENTIAL AND IT IS GIVEN TO YOU FOR A LIMITED PURPOSE AND MUST BE RETURNED UPON REQUEST. NEITHER THIS DRAWING OR ANY PART OF IT NOR ANY INFORMATION CONCERNING IT MAY BE COPIED, EXHIBITED, OR FURNISHED TO OTHERS NOR PHOTOGRAPHS TAKEN OF ANY ARTICLE FABRICATED OR ASSEMBLED FROM THE DRAWING WITHOUT THE CONSENT OF AFL.



MATERIAL:

ALUMINUM ALLOY ASTM B26
INSULATOR - GLASS REINFORCED POLYESTER
BOLTS & LOCKWASHERS - STAINLESS STEEL
NUTS - SILICON BRONZE

MECHANICAL RATINGS:


MIN. ULTIMATE STRENGTH (F_H): 1,780 LBS
(F_V): 10,000 LBS

ELECTRICAL RATING:

OPERATING VOLTAGE: 750 VDC
LEAKAGE DISTANCE: 2.44 IN
DRY FLASHOVER: 25 kV
WET FLASHOVER: 15 kV (HORZ), 12 kV (VERT)
ULTIMATE PUNCTURE: 35 kV (TESTED IN OIL)

BOLT SIZES	WRENCH/ SOCKET SIZES	TORQUE VALUES (FT-LBS)
3/8-16	9/16 HEX	20
5/8-11	15/16 HEX	97

WT: 2.59 LB

THIS DRAWING ASSUMES	LOCATION					CONTRACT NO		CUST / CONTR	
	REVISIONS					DRN BY: DK DRN DATE: 10.4.13 CHK BY: EP CHK DATE: 10.4.13 PA 2017.270.0			
	REV	DESCRIPTION	DATE	BY	APR		CLAMP, PIPE 3/4" SPS, KNUCKLE, WITH SPOOL INSULATOR, AL		
REV		PART NO:		KN-CCH-AA-01		1 OF 1			