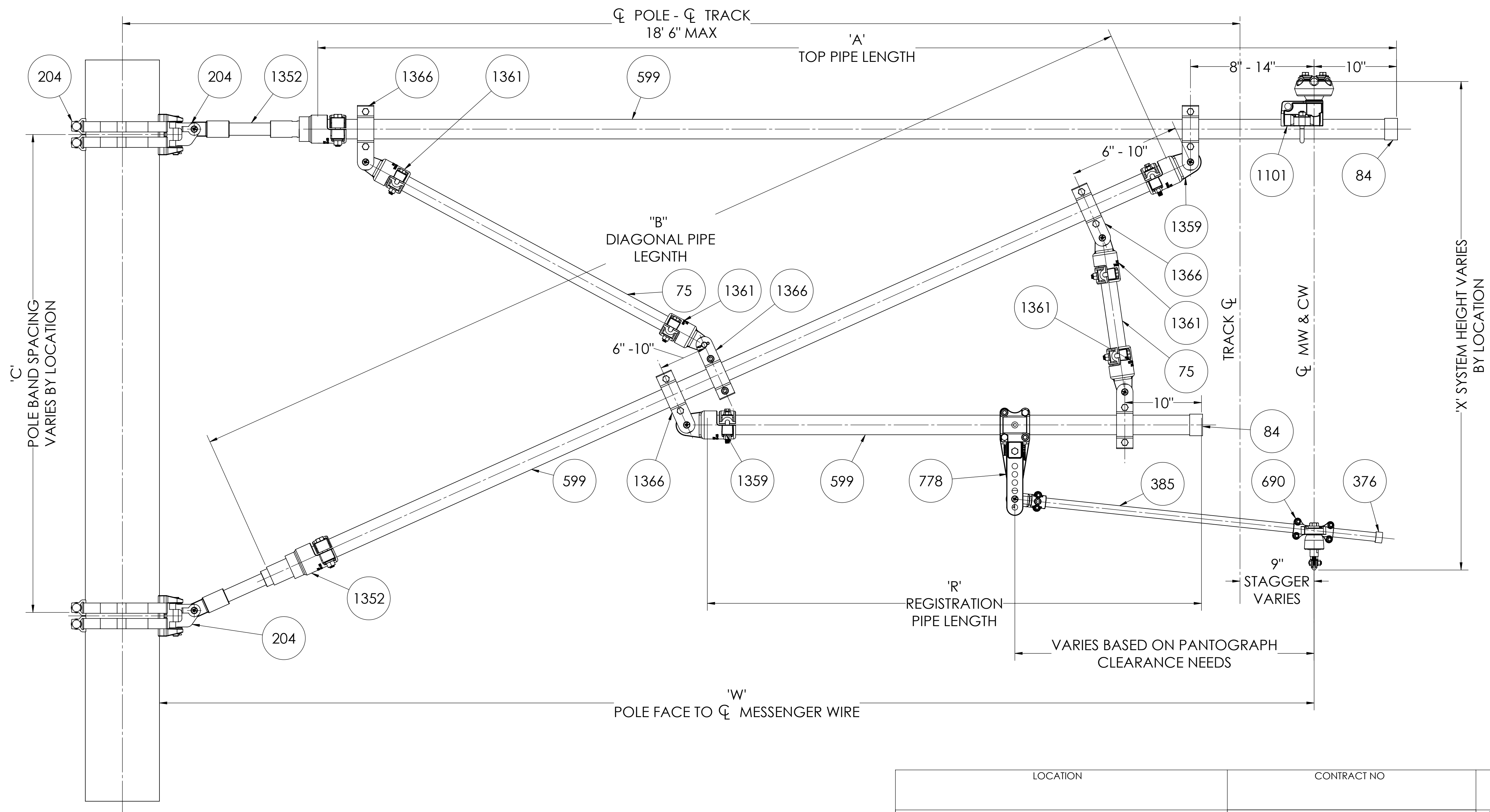


ITEM #	QTY.	PART NUMBER	DESCRIPTION
75	*	PGSB150-40	PIPE, 1 1/2" IPS X SCH 40 WALL, ASTM A106, GR B, TYPE E
84	2	ESC200	CAP, 2" IPS SEAL, EXTERNAL PLASTIC
204	2	PBA-HCB-A01	POLE BAND W/ HINGE
376	1	ESC75	END CAP, 3/4" IPS
385	1	CSA75-7200-A02-AA	STRAIGHT STEADY ARM, 3/4" IPS
599	*	PGSB200-40-L	PIPE, 2" IPS X SCH 40 WALL, ASTM A106, GR B, TYPE E
690	1	CSCA100-6-5AA	CLAMP, INSULATED CONTACT SWIVEL, CW:350MCM
778	1	ADB200-S-AA	ADJUSTABLE DROP BRACKET, 2" IPS
1101	1	MSCAI821-20050S-A06	INSULATOR MESSENGER SADDLE, AA 2"IPS, 500MCM SINGLE
1352	2	INS-ST2-A13	STRUT INSULATOR, 2" IPS, 750VDC
1366	6	BSCA200-63-A03	CLEVIS PIPE CLAMP, 2" IPS, 5/8" PIN. ADDED CLEARANCE
1359	2	TPSC200-C-63-AA	PIPE TO EYE END CLAMP, 2"
1361	4	TPSC150-C-63-AA	PIPE TO EYE END CLAMP, 1 1/2"



LOCATION		CONTRACT NO		CUST/CONTR											
THIS DRAWING AND ALL INFORMATION ON IT IS THE PROPERTY OF AFL. IT IS CONFIDENTIAL AND IT IS GIVEN TO YOU FOR A LIMITED PURPOSE AND MUST BE RETURNED UPON REQUEST. NEITHER THIS DRAWING OR ANY PART OF IT NOR ANY INFORMATION CONCERNING IT MAY BE COPIED, EXHIBITED, OR FURNISHED TO OTHERS NOR PHOTOGRAPHS TAKEN OF ANY ARTICLE FABRICATED OR ASSEMBLED FROM THE DRAWING WITHOUT THE CONSENT OF AFL.															
REVISIONS <table border="1"> <thead> <tr> <th>REV</th> <th>DESCRIPTION</th> <th>DATE</th> <th>BY</th> <th>APR</th> </tr> </thead> <tbody> <tr> <td>1</td> <td>UPDATED PARTS, BRACING</td> <td>8.27.14</td> <td>EE</td> <td>JL</td> </tr> </tbody> </table>						REV	DESCRIPTION	DATE	BY	APR	1	UPDATED PARTS, BRACING	8.27.14	EE	JL
REV	DESCRIPTION	DATE	BY	APR											
1	UPDATED PARTS, BRACING	8.27.14	EE	JL											
DRN BY: HV DRN DATE: 1.27.14 CHK BY: JL CHK DATE: 1.27.14 PA2013.0				CANTILEVER PUSH OFF LGT/MED LD MW:500 CW:350											
REV 1	AFLS-CA0-LR-03	DWG NO	AFLS-CA0-LR-03	1 OF 1											