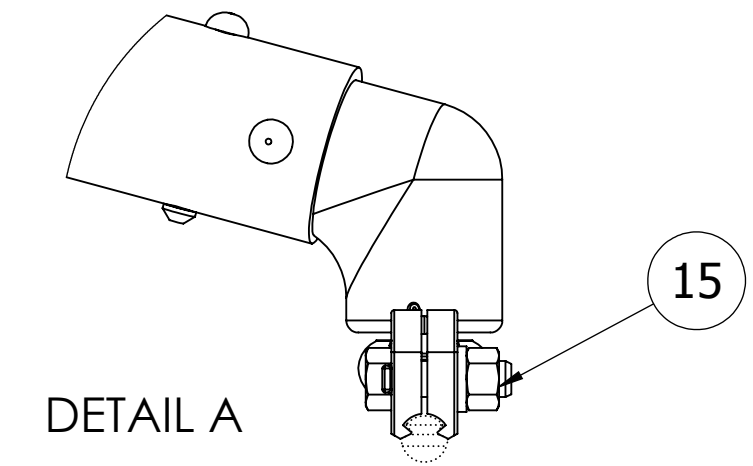
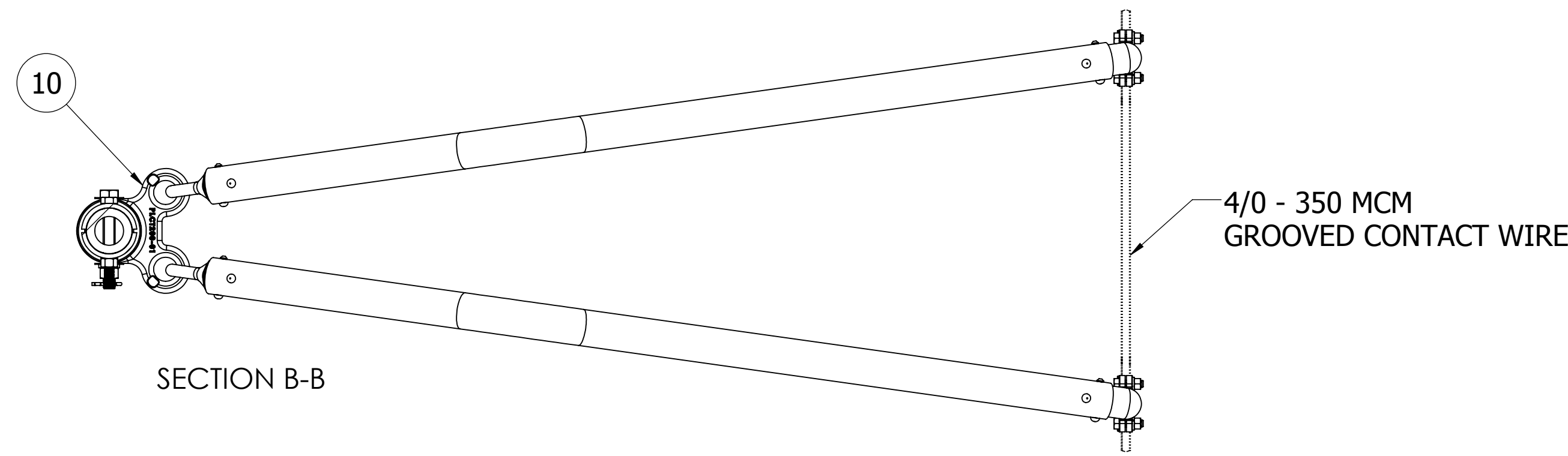
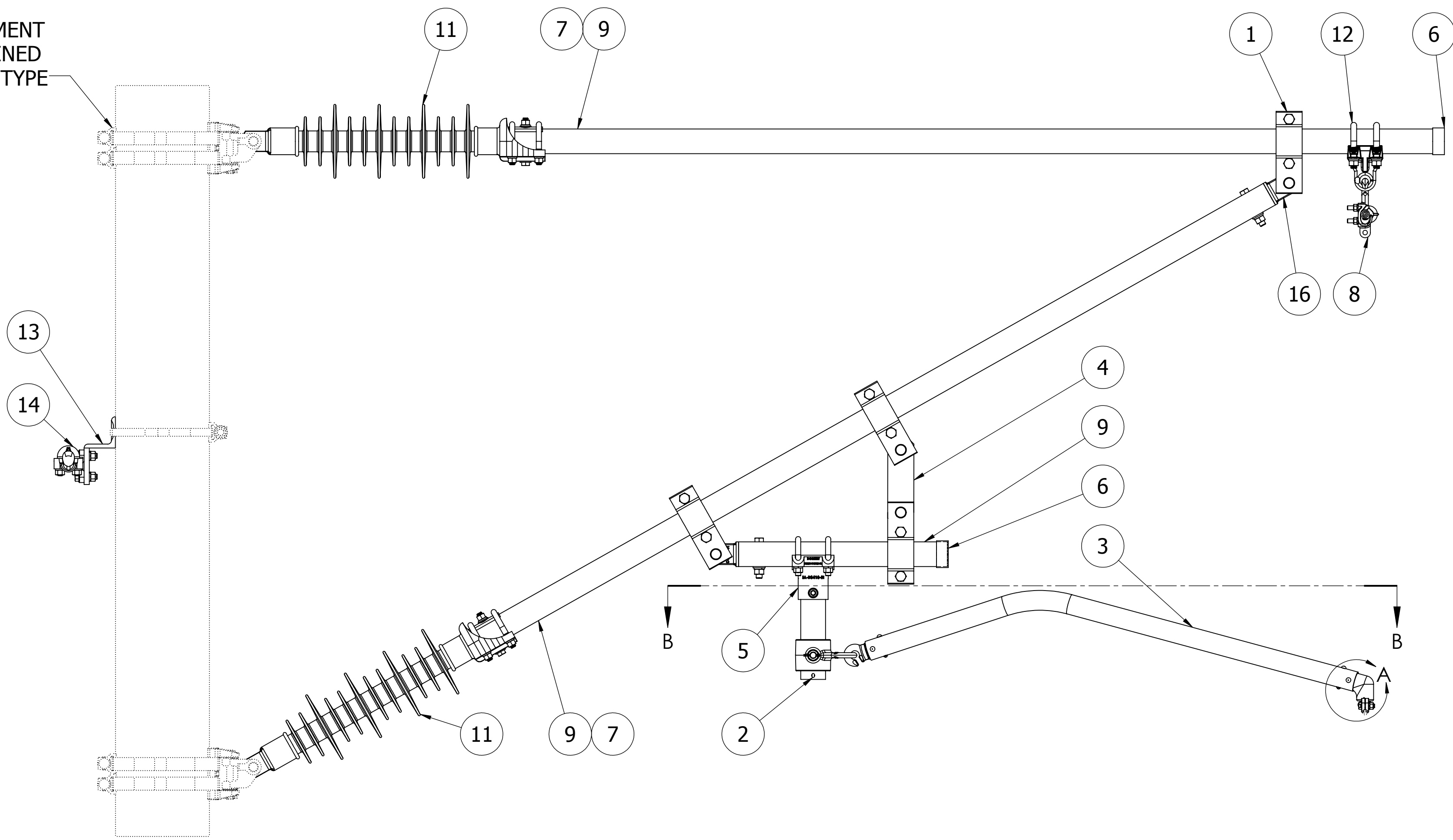


ATTACHMENT
DETERMINED
BY POLE TYPE



PARTS LIST			
ITEM	QTY.	PART NUMBER	DESCRIPTION
1	4	BSCA200-75-A01	CLAMP, PIPE, CLEVIS, 2" IPS, 3/4" PIN, EXT, AL
2	1	CPSS0017	COTTER PIN, HUMPBACK 1/4" X 2-1/2", SS
3	2	CSA150E-SR-1B-15	STEADY ARM, 1 1/2" IPS, 3.78 FT, 1 BEND, SCH 80, AL
4	1	DEL75X6GS	LINK, EYE TO EYE, INLINE, 13/16" HOLES, 6" CENTERS, HDG
5	1	DFP200-U-B3418-01	PIPE CLAMP, DROP, 2" IPS TO 2" IPS, BRZ
6	2	ESC200	CAP, 2" IPS SEAL, EXTERNAL PLASTIC, BLACK
7	2	ISC200E	PLUG, 2" IPS, INTERNAL PLASTIC, SCH 80 PIPE SEAL
8	1	MSU821-SR-SS	CLAMP, HOOK EYE SUSPENSION, .630" DIA. TO .814" DIA., BRZ, SS HARDWARE
9	*	PGSB200-80	PIPE, 2" IPS, SCH 80, ASTM A53, GR B, HDG/ASTM A123
10	1	PLCT200-01	PIPE CLAMP, 2" IPS, DOUBLE STEADY ARM, FR, AL
11	2	SA-B0406-04	INSULATOR, STRUT, TONGUE, 2" IPS, 25kv
12	1	SA-B0420-01	CLAMP, 2" IPS PIPE TO FR EYE, BRZ
13	1	SUS-BKT-K01	BRACKET, STATIC WIRE CLAMP MTG
14	1	SUS63-AA	CLAMP, STATIC WIRE, AL, FITS 1/0 (0.373D)
15	2	TCDS-B3406-03	CLAMP, SWIVEL CONTACT WIRE, 4/0 - 350 MCM, 3/8"-16 MALE THD
16	2	TPSC200-B0505-01	CLAMP, PIPE EYE, 2" SCH 80, HDG, INTERNAL

LOCATION		CONTRACT NO		CUST/CONTR																															
<p>THIS DRAWING AND ALL INFORMATION ON IT IS THE PROPERTY OF AFL. IT IS CONFIDENTIAL AND IT IS GIVEN TO YOU FOR A LIMITED PURPOSE AND MUST BE RETURNED UPON REQUEST. NEITHER THIS DRAWING OR ANY PART OF IT NOR ANY INFORMATION CONCERNING IT MAY BE COPIED, EXHIBITED, OR FURNISHED TO OTHERS NOR PHOTOGRAPHS TAKEN OF ANY ARTICLE FABRICATED OR ASSEMBLED FROM THE DRAWING WITHOUT THE CONSENT OF AFL.</p>																																			
<table border="1"> <thead> <tr> <th colspan="6">REVISIONS</th> </tr> <tr> <th>REV</th> <th>DESCRIPTION</th> <th>DATE</th> <th>BY</th> <th>APR</th> <th></th> </tr> </thead> <tbody> <tr> <td> </td> <td> </td> <td> </td> <td> </td> <td> </td> <td> </td> </tr> <tr> <td> </td> <td> </td> <td> </td> <td> </td> <td> </td> <td> </td> </tr> <tr> <td> </td> <td> </td> <td> </td> <td> </td> <td> </td> <td> </td> </tr> </tbody> </table>						REVISIONS						REV	DESCRIPTION	DATE	BY	APR																			
REVISIONS																																			
REV	DESCRIPTION	DATE	BY	APR																															
DRN BY: EE DRN DATE: 4.18.16 CHK BY: GC CHK DATE: 4.18.16 PA2015.231.0				CANTILEVER, PULL-OFF, HEAVY LOAD, 25KVAC, CW: 4/0 TO 350																															
REV: 0	CA0-HSR-13	DWG. NO: AFLS-CA0-HSR-13	1 OF 1																																