

# Rod Strain Insulators



## For Rail Transit Systems

**DOSSERT®**



### Features

- All common Transit insulation values including 750 VDC, 1,500 VDC and 25 kV AC voltage requirements
- Ultra-high strength bronze, galvanized steel and aluminum end fittings available
- 100% Proof tested to exceed working load tension requirements
- Standardized 5/8" and 7/8" insulating rod diameters
- Industry standard eye and clevis end fittings

- Rods are offered with the following UV Protective coatings:
  - Gray Alkyd-based enamel paint
  - Polyester veiled
  - Silicon coated
  - Silicon skirts / sheds for increased tracking resistance

- Designed and manufactured in USA



### Benefits

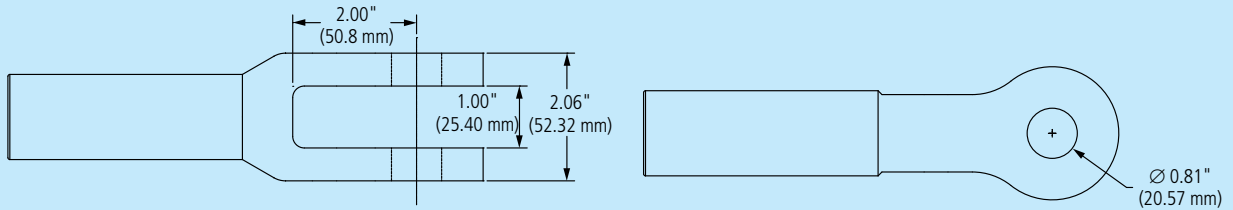
- Industry-proven design
- Long life expectancy

**Call your local AFL sales representative for more information!**

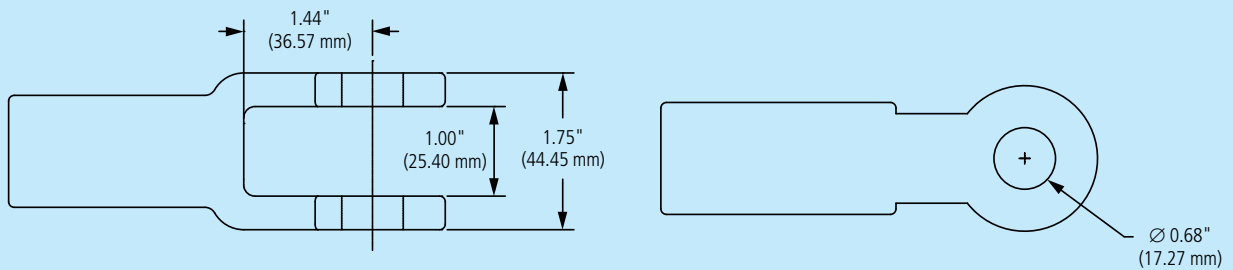
[www.AFLglobal.com](http://www.AFLglobal.com)

1.800.866.2075

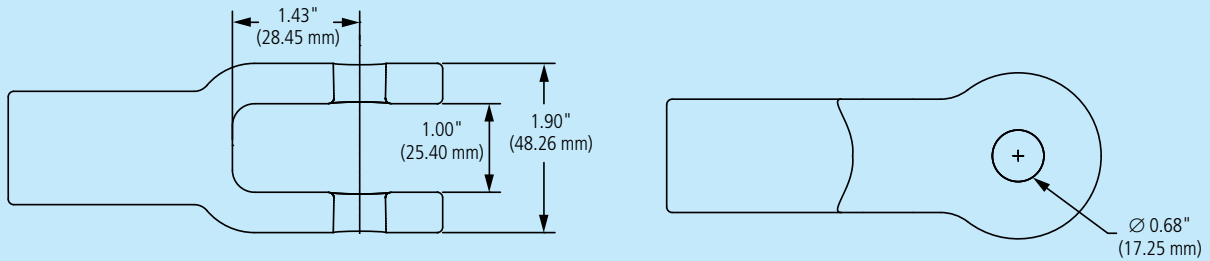
# About Insulator End Fittings



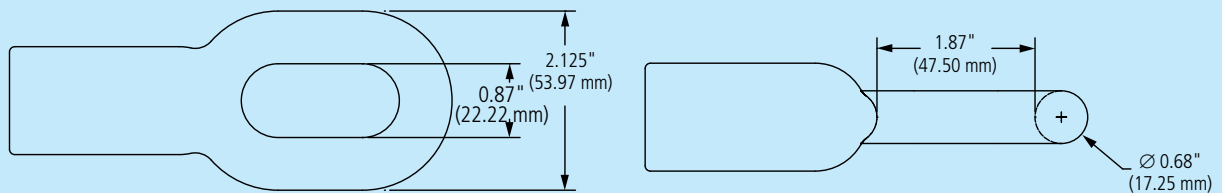
**CLE-INS-30K**



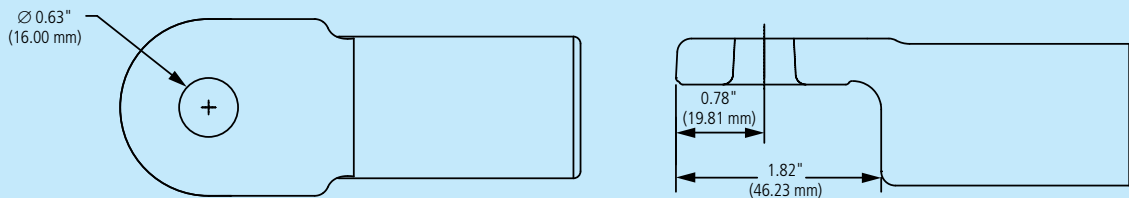
**CLE-AF-625-FG**



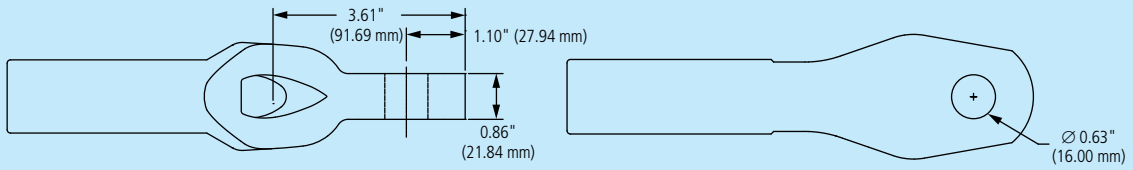
**CLE-INS-P08**



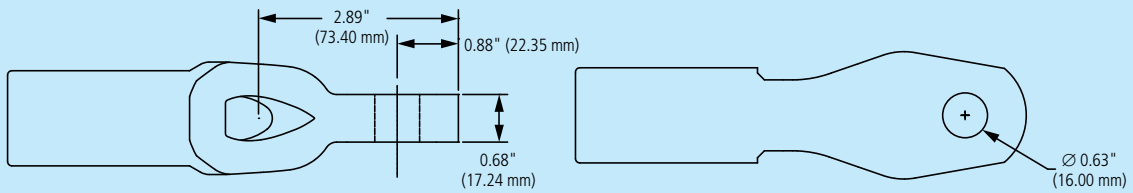
**EYE-INS-P09**



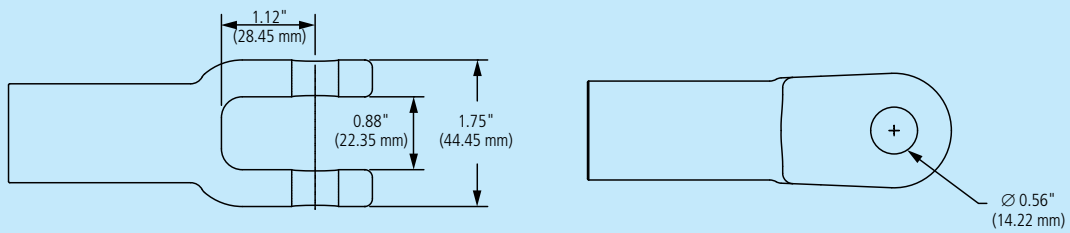
**ADJ-INS-P01**



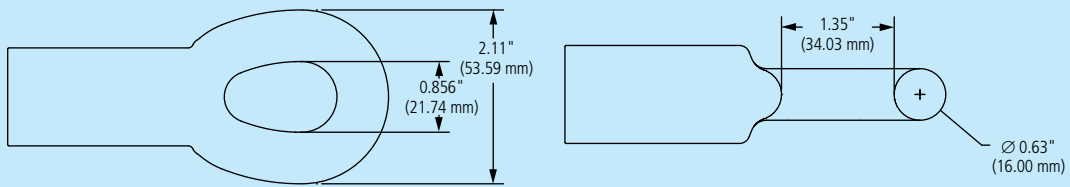
**THM-EYE-30K**



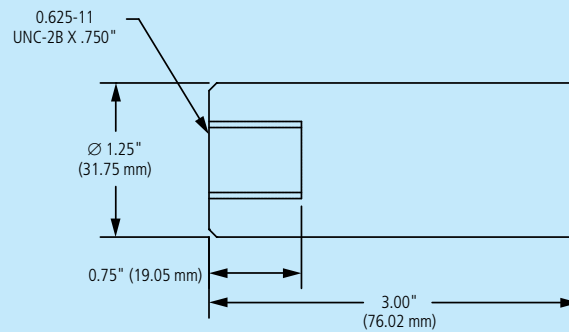
**THM-EYE-21K**



**PH7891-P02**



**PH7890-P02**



**TAP-INS-005**



## Specifications – Insulator End Fittings

MODEL NO.	END FITTING TYPE	MATERIAL	RIVET/TAP SIZE	MIN. ULTIMATE LOAD
PH7891-P02	Clevis	Bronze	1/2"	10,000 lbs
CLE-INS-P08	Clevis	Steel	5/8"	21,000 lbs
CLE-AF-625-FG	Clevis	Iron HDG	5/8"	21,000 lbs
CLE-INS-30K	Clevis	Iron HDG	3/4"	30,000 lbs
PH7890-P02	Eye	Bronze	—	10,000 lbs
EYE-INS-P09	Eye	Steel	—	21,000 lbs
THM-EYE-21K	Thimble Eye	Iron HDG	—	21,000 lbs
THM-EYE-30K	Thimble Eye	Iron HDG	—	30,000 lbs
TAP-INS-005	Special	Steel	5/8"-11 x 3/4 D	21,000 lbs
ADJ-INS-P01	Special	Bronze	—	5,000 lbs

## Ordering Information

AFL insulators can be manufactured in unlimited orientations. Size and strength of finished units depend on the end fitting configuration and orientation required. Contact AFL for the solution to meet and exceed each of your strain insulator requirements.

**Call your local AFL sales representative for more information!**