

DOSSERT®

TYPE SCB-90H, SCB-90V Copper Stud Connector To Flat Bar

A single bar connector for connecting bar conductors at right angles to a threaded or smooth stud. Furnished complete with all clamping bolts.

Material

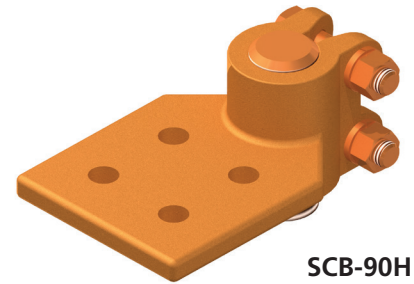
Copper Alloy

Hardware

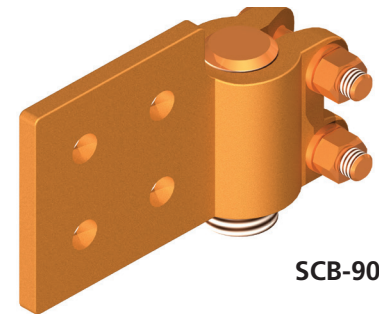
Everdur bolts, nuts and lockwashers

Note

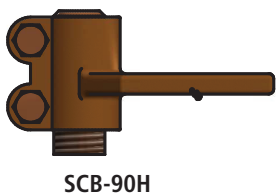
Also available for other sizes of studs and bar arrangements.



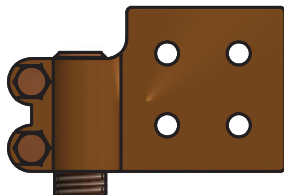
SCB-90H



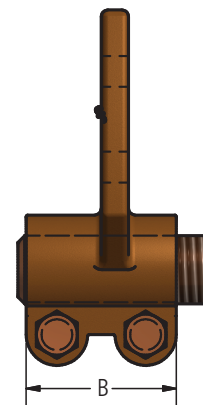
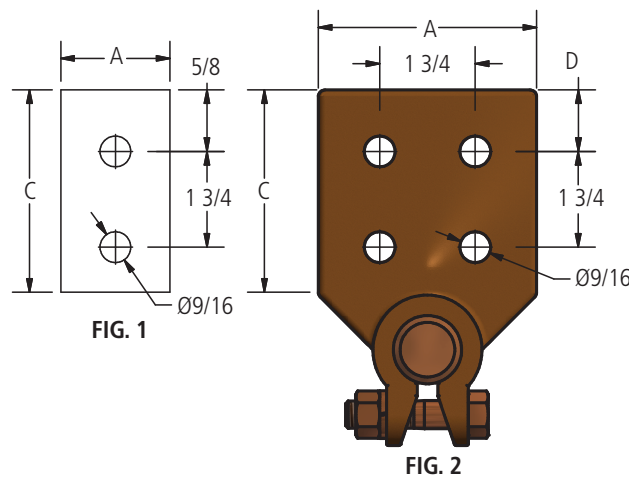
SCB-90V



SCB-90H



SCB-90V



Ordering Information

CATALOG NUMBER		STUD DIAMETER	THREADS PER INCH	FIG. NO.	DIMENSIONS IN INCHES				BOLT SIZE
SCV-90H SERIES	SCV-90V SERIES				A	B	C	D	
SCB50-1-2N-90H-T13	SCB50-1-2N-90V-T13	1/2	13	1	2	2	3	5/8	3/8
SCB50-1-3N-90H-T13	SCB50-1-3N-90V-T13	1/2	13	2	3	2	3	5/8	3/8
SCB75-1-2N-90H-T16	SCB75-1-2N-90V-T16	3/4	16	1	2	2	3	5/8	3/8
SCB75-1-3N-90H-T16	SCB75-1-3N-90V-T16	3/4	16	2	3	2	3	5/8	3/8
SCB100-1-2N-90H-T14	SCB100-1-2N-90V-T14	1	14	1	2	2	3	5/8	3/8
SCB100-1-3N-90H-T14	SCB100-1-3N-90V-T14	1	14	2	3	2 3/4	3	5/8	1/2
SCB100-1-4N-90H-T14	SCB100-1-4N-90V-T14	1	14	2	4	2 3/4	3	1 1/8	1/2
SCB112-1-2N-90H-T12	SCB112-1-2N-90V-T12	1 1/8	12	1	2	2	3	5/8	3/8
SCB112-1-3N-90H-T12	SCB112-1-3N-90V-T12	1 1/8	12	2	3	2 3/4	3	5/8	1/2
SCB112-1-4N-90H-T12	SCB112-1-4N-90V-T12	1 1/8	12	2	4	2 3/4	3	1 1/8	1/2
SCB125-1-2N-90H-T12	SCB125-1-2N-90V-T12	1 1/4	12	1	2	2	3	5/8	3/8
SCB125-1-3N-90H-T12	SCB125-1-3N-90V-T12	1 1/4	12	2	3	2 3/4	3	5/8	1/2
SCB125-1-4N-90H-T12	SCB125-1-4N-90V-T12	1 1/4	12	2	4	2 3/4	3	1 1/8	1/2
SCB150-1-2N-90H-T12	SCB150-1-2N-90V-T12	1 1/2	12	1	2	2	3	5/8	3/8
SCB150-1-3N-90H-T12	SCB150-1-3N-90V-T12	1 1/2	12	2	3	2 3/4	3	5/8	1/2
SCB150-1-4N-90H-T12	SCB150-1-4N-90V-T12	1 1/2	12	2	4	2 3/4	3	1 1/8	1/2
SCB200-1-2N-90H-T12	SCB200-1-2N-90V-T12	2	12	1	2	2	3	5/8	3/8
SCB200-1-3N-90H-T12	SCB200-1-3N-90V-T12	2	12	2	3	2 3/4	3	5/8	1/2
SCB200-1-4N-90H-T12	SCB200-1-4N-90V-T12	2	12	2	4	2 3/4	3	1 1/8	1/2

DOSSERT®

TYPE SCB-F Stud Connector to Flat Bar Type

A single or multi-bar connector for connecting one or more flat bars to a threaded or plain stud. Can be furnished to accommodate stud diameters or threads per inch other than listed below.

Material

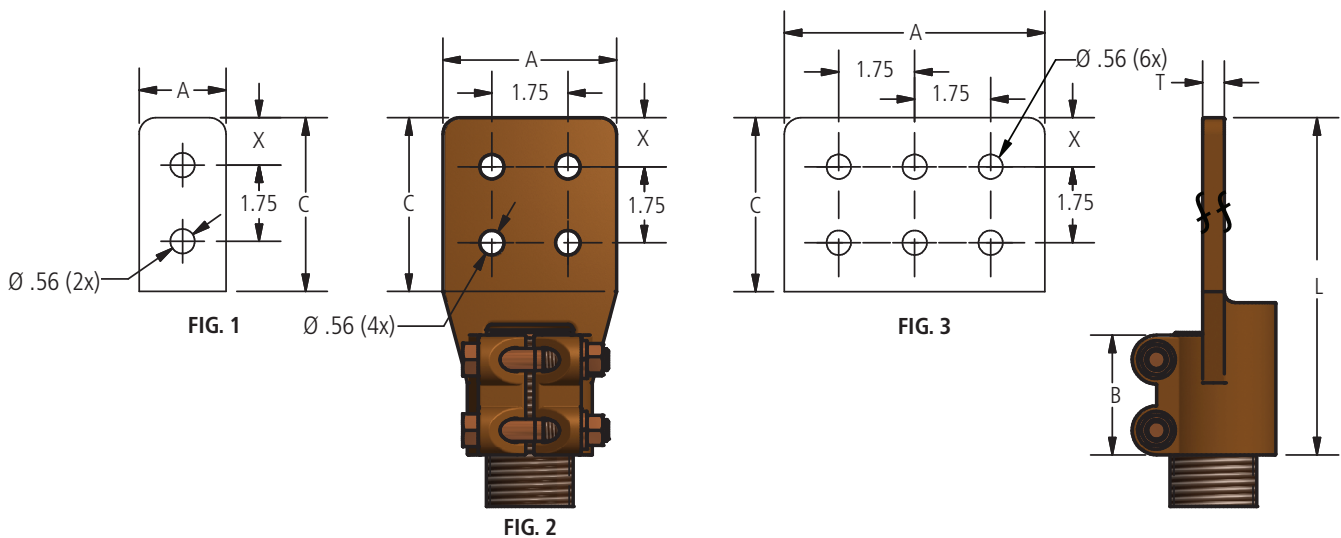
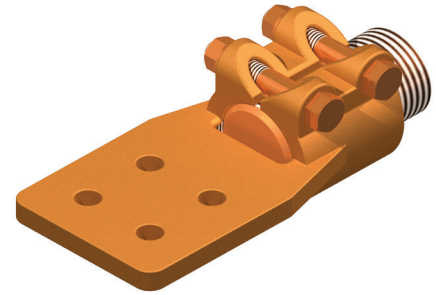
High Conductivity Cast Copper Alloy

Hardware

Everdur bolts, nuts and lockwashers

Note

For Tin Plating, add suffix "-SN" to end of catalog number. EX: SCB200-1/2F-4N4-T12-SN



Ordering Information

CATALOG NUMBER	STUD DIAMETER	THREADS PER INCH	FIG. NO.	DIMENSIONS IN INCHES					
				A	B	C	L	T	X
SCB63-1/4F-2N-T18	5/8	18	1	2	2	3	5 1/2	1/4	5/8
SCB63-1/4F-3N-T18	5/8	18	2	3	2	3	5 1/2	1/4	5/8
SCB63-1/4F-4N-T18	5/8	18	2	4	2	3	5 1/2	1/4	5/8
SCB63-1/4F-4N4-T18	5/8	18	2	4	2	4	6 1/2	1/4	1 1/8
SCB63-3/8F-2N-T18	5/8	18	1	2	2	3	5 1/2	3/8	5/8
SCB63-3/8F-2N-T11	5/8	11	1	2	2	3	5 1/2	3/8	5/8
SCB63-3/8F-3N-T18	5/8	18	2	3	2	3	5 1/2	3/8	5/8
SCB63-3/8F-3N-T11	5/8	11	2	3	2	3	5 1/2	3/8	5/8
SCB63-3/8F-3N-TM16	5/8	M16 x 2.0	2	3	2	3	5 1/2	3/8	5/8
SCB63-3/8F-4N-T18	5/8	18	2	4	2	3	5 1/2	3/8	5/8
SCB63-3/8F-4N4-T18	5/8	18	2	4	2	4	6 1/2	3/8	1 1/8
SCB75-1/4F-2N-T16	3/4	16	1	2	2	3	5 1/2	1/4	5/8
SCB75-1/4F-3N-T16	3/4	16	2	3	2	3	5 1/2	1/4	5/8
SCB75-1/4F-4N-T16	3/4	16	2	4	2	3	5 1/2	1/4	5/8
SCB75-1/4F-4N4-T16	3/4	16	2	4	2	4	6 1/2	1/4	1 1/8
SCB75-3/8F-2N-T16	3/4	16	1	2	2	3	5 1/2	3/8	5/8
SCB75-3/8F-3N-T16	3/4	16	2	3	2	3	5 1/2	3/8	5/8
SCB75-3/8F-4N-T16	3/4	16	2	4	2	3	5 1/2	3/8	5/8
SCB75-3/8F-4N4-T16	3/4	16	2	4	2	4	6 1/2	3/8	1 1/8



DOSSERT®

TYPE SCB-F
Stud Connector to Flat Bar Type

Ordering Information

CATALOG NUMBER	STUD DIAMETER	THREADS PER INCH	FIG. NO.	DIMENSIONS IN INCHES					
				A	B	C	L	T	X
SCB100-1/4F-2N-T14	1	14	1	2	2	3	5 3/8	1/4	5/8
SCB100-1/4F-3N-T14	1	14	2	3	2 1/4	3	5 5/8	1/4	5/8
SCB100-1/4F-4N-T14	1	14	2	4	2 1/4	3	5 5/8	1/4	5/8
SCB100-1/4F-4N4-T14	1	14	2	4	2 1/4	4	6 5/8	1/4	1 1/8
SCB100-1/4F-3N-T14	1	14	2	3	2 1/4	3	5 5/8	1/4	5/8
SCB100-1/4F-4N-T14	1	14	2	4	2 1/4	3	5 5/8	1/4	5/8
SCB100-1/4F-4N4-T14	1	14	2	4	2 1/4	4	6 5/8	1/4	1 1/8
SCB100-3/8F-2N-T14	1	14	1	2	2	3	5 3/8	3/8	5/8
SCB100-3/8F-3N-T14	1	14	2	3	2 1/4	3	5 5/8	3/8	5/8
SCB100-3/8F-4N-T14	1	14	2	4	2 1/4	3	5 5/8	3/8	5/8
SCB100-3/8F-4N4-T14	1	14	2	4	2 1/4	4	6 5/8	3/8	1 1/8
SCB100-1/2F-2N-T14	1	14	1	2	2	3	5 3/8	1/2	5/8
SCB100-1/2F-3N-T14	1	14	2	3	2 1/4	3	5 5/8	1/2	5/8
SCB100-1/2F-4N-T14	1	14	2	4	2 1/4	3	5 5/8	1/2	5/8
SCB100-1/2F-4N4-T14	1	14	2	4	2 1/4	4	6 5/8	1/2	1 1/8
SCB112-1/4F-2N-T12	1 1/8	12	1	2	2	3	5 1/2	1/4	5/8
SCB112-1/4F-3N-T12	1 1/8	12	2	3	2 1/4	3	5 3/4	1/4	5/8
SCB112-1/4F-4N-T12	1 1/8	12	2	4	2 1/4	3	5 3/4	1/4	5/8
SCB112-1/4F-4N4-T12	1 1/8	12	2	4	2 1/4	4	6 3/4	1/4	1 1/8
SCB112-3/8F-2N-T12	1 1/8	12	1	2	2	3	5 1/2	3/8	5/8
SCB112-3/8F-3N-T12	1 1/8	12	2	3	2 1/4	3	5 3/4	3/8	5/8
SCB112-3/8F-4N-T12	1 1/8	12	2	4	2 1/4	3	5 3/4	3/8	5/8
SCB112-3/8F-4N4-T12	1 1/8	12	2	4	2 1/4	4	6 3/4	3/8	1 1/8
SCB112-1/2F-2N-T12	1 1/8	12	1	2	2	3	5 1/2	1/2	5/8
SCB112-1/2F-3N-T12	1 1/8	12	2	3	2 1/4	3	5 3/4	1/2	5/8
SCB112-1/2F-4N-T12	1 1/8	12	2	4	2 1/4	3	5 3/4	1/2	5/8
SCB112-1/2F-4N4-T12	1 1/8	12	2	4	2 1/4	4	6 3/4	1/2	1 1/8
SCB125-1/4F-2N-T12	1 1/4	12	1	2	2	3	5 1/2	1/4	5/8
SCB125-1/4F-3N-T12	1 1/4	12	2	3	2 3/4	3	6 1/4	1/4	5/8
SCB125-1/4F-4N-T12	1 1/4	12	2	4	2 3/4	3	6 1/4	1/4	5/8
SCB125-1/4F-4N4-T12	1 1/4	12	2	4	2 3/4	4	7 1/4	1/4	1 1/8
SCB125-3/8F-2N-T12	1 1/4	12	1	2	2	3	5 1/2	3/8	5/8
SCB125-3/8F-3N-T12	1 1/4	12	2	3	2 3/4	3	6 1/4	3/8	5/8
SCB125-3/8F-4N-T12	1 1/4	12	2	4	2 3/4	3	6 1/4	3/8	5/8
SCB125-3/8F-4N4-T12	1 1/4	12	2	4	2 3/4	4	7 1/4	3/8	1 1/8
SCB125-1/2F-2N-T12	1 1/4	12	1	2	2	3	5 1/2	1/2	5/8
SCB125-1/2F-3N-T12	1 1/4	12	2	3	2 3/4	3	6 1/4	1/2	5/8
SCB125-1/2F-4N-T12	1 1/4	12	2	4	2 3/4	3	6 1/4	1/2	5/8
SCB125-1/2F-4N4-T12	1 1/4	12	2	4	2 3/4	4	7 1/4	1/2	1 1/8
SCB143-1/2F-4N4-T0	1 7/16	0	2	4	2 3/4	4	7 1/4	1/2	1 1/8
SCB150-3/8F-2N-T12	1 1/2	12	1	2	2	3	5 1/2	3/8	5/8
SCB150-3/8F-3N-T12	1 1/2	12	2	3	2 3/4	3	6 1/4	3/8	5/8
SCB150-3/8F-4N-T12	1 1/2	12	2	4	2 3/4	3	6 1/4	3/8	5/8
SCB150-3/8F-4N4-T12	1 1/2	12	2	4	2 3/4	4	7 1/4	3/8	1 1/8
SCB150-1/2F-2N-T12	1 1/2	12	1	2	2	3	5 1/2	1/2	5/8
SCB150-1/2F-3N-T12	1 1/2	12	2	3	2 3/4	3	6 1/4	1/2	5/8
SCB150-1/2F-4N-T12	1 1/2	12	2	4	2 3/4	3	6 1/4	1/2	5/8
SCB150-1/2F-4N4-T12	1 1/2	12	2	4	2 3/4	4	7 1/4	1/2	1 1/8
SCB150-1/2F-6N4-T12	1 1/2	12	3	6	2 3/4	4	7 5/8	1/2	1 1/8
SCB150-3/4F-2N-T12	1 1/2	12	1	2	2	3	5 1/2	3/4	5/8
SCB150-3/4F-3N-T12	1 1/2	12	2	3	2 3/4	3	6 1/4	3/4	5/8
SCB150-3/4F-4N-T12	1 1/2	12	2	4	2 3/4	3	6 1/4	3/4	5/8
SCB150-3/4F-4N4-T12	1 1/2	12	2	4	2 3/4	4	7 1/4	3/4	1 1/8
SCB150-1F-6N4-T12	1 1/2	12	3	6	2 3/4	4	7 5/8	1	1 1/8
SCB157-1/2F-4N4-T0	40MM	0	2	4	2 3/4	4	7 1/4	1/2	1 1/8
SCB175-3/8F-2N-T12	1 3/4	12	1	2	2 3/4	3	5 1/2	3/8	5/8
SCB175-3/8F-3N-T12	1 3/4	12	2	3	2 3/4	3	6 1/4	3/8	5/8
SCB175-3/8F-4N-T12	1 3/4	12	2	4	2 3/4	3	6 1/4	3/8	5/8
SCB175-3/8F-4N4-T12	1 3/4	12	2	4	2 3/4	4	7 1/4	3/8	1 1/8
SCB175-1/2F-2N-T12	1 3/4	12	1	2	2 3/4	3	5 1/2	1/2	5/8
SCB175-1/2F-3N-T12	1 3/4	12	2	3	2 3/4	3	6 1/4	1/2	5/8
SCB175-1/2F-4N-T12	1 3/4	12	2	4	2 3/4	3	6 1/4	1/2	5/8
SCB175-1/2F-4N4-T12	1 3/4	12	2	4	2 3/4	4	7 1/4	1/2	1 1/8

Bronze Terminals, Taps



DOSSERT®

TYPE SCB-F
Stud Connector to Flat Bar Type

Ordering Information

CATALOG NUMBER	STUD DIAMETER	THREADS PER INCH	FIG. NO.	DIMENSIONS IN INCHES					
				A	B	C	L	T	X
SCB175-5/8F-2N-T12	1 3/4	12	1	2	2 3/4	3	5 1/2	5/8	5/8
SCB175-5/8F-3N-T12	1 3/4	12	2	3	2 3/4	3	6 1/4	5/8	5/8
SCB175-5/8F-4N-T12	1 3/4	12	2	4	2 3/4	3	6 1/4	5/8	5/8
SCB175-5/8F-4N4-T12	1 3/4	12	2	4	2 3/4	4	7 1/4	5/8	1 1/8
SCB175-3/4F-2N-T12	1 3/4	12	1	2	2 3/4	3	5 1/2	3/4	5/8
SCB175-3/4F-3N-T12	1 3/4	12	2	3	2 3/4	3	6 1/4	3/4	5/8
SCB175-3/4F-4N-T12	1 3/4	12	2	4	2 3/4	3	6 1/4	3/4	5/8
SCB175-3/4F-4N4-T12	1 3/4	12	2	4	2 3/4	4	7 1/4	3/4	1 1/8
SCB200-3/8F-2N-T12	2	12	1	2	2 3/4	3	5 1/2	3/8	5/8
SCB200-3/8F-3N-T12	2	12	2	3	2 3/4	3	6 1/4	3/8	5/8
SCB200-3/8F-4N-T12	2	12	2	4	2 3/4	3	6 1/4	3/8	5/8
SCB200-3/8F-4N4-T12	2	12	2	4	2 3/4	4	7 1/4	3/8	1 1/8
SCB200-1/2F-2N-T12	2	12	1	2	2 3/4	3	5 1/2	1/2	5/8
SCB200-1/2F-3N-T12	2	12	2	3	2 3/4	3	6 1/4	1/2	5/8
SCB200-1/2F-4N-T12	2	12	2	4	2 3/4	3	6 1/4	1/2	5/8
SCB200-1/2F-4N4-T12	2	12	2	4	2 3/4	4	7 1/4	1/2	1 1/8
SCB200-5/8F-2N-T12	2	12	1	2	2 3/4	3	5 1/2	5/8	5/8
SCB200-5/8F-3N-T12	2	12	2	3	2 3/4	3	6 1/4	5/8	5/8
SCB200-5/8F-4N-T12	2	12	2	4	2 3/4	3	6 1/4	5/8	5/8
SCB200-5/8F-4N4-T12	2	12	2	4	2 3/4	4	7 1/4	5/8	1 1/8
SCB200-5/8F-6N4-T12	2	12	3	6	2 3/4	4	7 5/8	5/8	1 1/8
SCB200-3/4F-2N-T12	2	12	1	2	2 3/4	3	5 1/2	3/4	5/8
SCB200-3/4F-3N-T12	2	12	2	3	2 3/4	3	6 1/4	3/4	5/8
SCB200-3/4F-4N-T12	2	12	2	4	2 3/4	3	6 1/4	3/4	5/8
SCB200-3/4F-4N4-T12	2	12	2	4	2 3/4	4	7 1/4	3/4	1 1/8
SCB200-1F-2N-T12	2	12	1	2	2 3/4	3	5 1/2	1	5/8
SCB200-1F-3N-T12	2	12	2	3	2 3/4	3	6 1/4	1	5/8
SCB200-1F-4N-T12	2	12	2	4	2 3/4	3	6 1/4	1	5/8
SCB200-1F-4N4-T12	2	12	2	4	2 3/4	4	7 1/4	1	1 1/8
SCB200-1F-6N4-T12	2	12	3	6	2 3/4	4	7 5/8	1	1 1/8
SCB225-1/2F-2N-T12	2 1/4	12	1	2	2 3/4	3	5 1/2	1/2	5/8
SCB225-1/2F-3N-T12	2 1/4	12	2	3	2 3/4	3	6 1/4	1/2	5/8
SCB225-1/2F-4N-T12	2 1/4	12	2	4	2 3/4	3	6 1/2	1/2	5/8
SCB225-1/2F-4N4-T12	2 1/4	12	2	4	2 3/4	4	7 1/4	1/2	1 1/8
SCB225-5/8F-2N-T12	2 1/4	12	1	2	2 3/4	3	5 1/2	5/8	5/8
SCB225-5/8F-3N-T12	2 1/4	12	2	3	2 3/4	3	6 1/4	5/8	5/8
SCB225-5/8F-4N-T12	2 1/4	12	2	4	2 3/4	3	6 1/4	5/8	5/8
SCB225-5/8F-4N4-T12	2 1/4	12	2	4	2 3/4	4	7 1/4	5/8	1 1/8
SCB225-3/4F-2N-T12	2 1/4	12	1	2	2 3/4	3	5 1/2	3/4	5/8
SCB225-3/4F-3N-T12	2 1/4	12	2	3	2 3/4	3	6 1/4	3/4	5/8
SCB225-3/4F-4N-T12	2 1/4	12	2	4	2 3/4	3	6 1/4	3/4	5/8
SCB225-3/4F-4N4-T12	2 1/4	12	2	4	2 3/4	4	7 1/4	3/4	1 1/8
SCB225-3/4F-6N4-T12	2 1/4	12	3	6	2 3/4	4	7 5/8	3/4	1 1/8
SCB225-1F-2N-T12	2 1/4	12	1	2	2 3/4	3	5 1/2	1	5/8
SCB225-1F-3N-T12	2 1/4	12	2	3	2 3/4	3	6 1/4	1	5/8
SCB225-1F-4N-T12	2 1/4	12	2	4	2 3/4	3	6 1/4	1	5/8
SCB225-1F-4N4-T12	2 1/4	12	2	4	2 3/4	4	7 1/4	1	1 1/8
SCB250-1/2F-2N-T12	2 1/2	12	1	2	3	3	6 1/4	1/2	5/8
SCB250-1/2F-3N-T12	2 1/2	12	2	3	3	3	6 1/4	1/2	5/8
SCB250-1/2F-4N-T12	2 1/2	12	2	4	3	3	6 1/4	1/2	5/8
SCB250-1/2F-4N4-T12	2 1/2	12	2	4	3	4	7 1/4	1/2	1 1/8
SCB250-5/8F-2N-T12	2 1/2	12	1	2	3	3	6 1/4	5/8	5/8
SCB250-5/8F-3N-T12	2 1/2	12	2	3	3	3	6 1/4	5/8	5/8
SCB250-5/8F-4N-T12	2 1/2	12	2	4	3	3	6 1/4	5/8	5/8
SCB250-5/8F-4N4-T12	2 1/2	12	2	4	3	4	7 1/4	5/8	1 1/8
SCB250-3/4F-2N-T12	2 1/2	12	1	2	3	3	6 1/4	3/4	5/8
SCB250-3/4F-3N-T12	2 1/2	12	2	3	3	3	6 1/4	3/4	5/8
SCB250-3/4F-4N-T12	2 1/2	12	2	4	3	3	6 1/4	3/4	5/8
SCB250-3/4F-4N4-T12	2 1/2	12	2	4	3	4	7 5/8	3/4	1 1/8
SCB250-1F-2N-T12	2 1/2	12	1	2	3	3	6 1/4	1	5/8
SCB250-1F-3N-T12	2 1/2	12	2	3	3	3	6 1/4	1	5/8
SCB250-1F-4N-T12	2 1/2	12	2	4	3	3	6 1/4	1	5/8
SCB250-1F-4N4-T12	2 1/2	12	2	4	3	4	7 1/4	1	1 1/8



DOSSERT®

TYPE SCB-F
Stud Connector to Flat Bar Type

Ordering Information

CATALOG NUMBER	STUD DIAMETER	THREADS PER INCH	FIG. NO.	DIMENSIONS IN INCHES					
				A	B	C	L	T	X
SCB300-1/2F-2N-T12	3	12	1	2	3	3	6 1/2	1/2	5/8
SCB300-1/2F-3N-T12	3	12	2	3	3	3	6 1/2	1/2	5/8
SCB300-1/2F-4N-T12	3	12	2	4	3	3	6 1/2	1/2	5/8
SCB300-1/2F-4N4-T12	3	12	2	4	3	4	7 1/2	1/2	1 1/8
SCB300-1/2F-6N4-T12	3	12	3	6	3	4	7 7/8	1/2	1 1/8
SCB300-5/8F-2N-T12	3	12	1	2	3	3	6 1/2	5/8	5/8
SCB300-5/8F-3N-T12	3	12	2	3	3	3	6 1/2	5/8	5/8
SCB300-5/8F-4N-T12	3	12	2	4	3	3	6 1/2	5/8	5/8
SCB300-5/8F-4N4-T12	3	12	2	4	3	4	7 1/2	5/8	1 1/8
SCB300-3/4F-2N-T12	3	12	1	2	3 1/4	3	6 1/2	3/4	5/8
SCB300-3/4F-3N-T12	3	12	2	3	3 1/4	3	6 1/2	3/4	5/8
SCB300-3/4F-4N-T12	3	12	2	4	3 1/4	3	7 5/8	3/4	5/8
SCB300-3/4F-4N4-T12	3	12	2	4	3 1/4	4	8 1/8	3/4	1 1/8
SCB300-1F-2N-T12	3	12	1	2	3 1/4	3	6 1/2	1	5/8
SCB300-1F-3N-T12	3	12	2	3	3 1/4	3	6 1/2	1	5/8
SCB300-1F-4N4-T12	3	12	2	4	3 1/4	4	7 1/2	1	5/8
SCB300-1F-6N4-T12	3	12	3	6	3	4	7 7/8	1	1 1/8
SCB350-1F-6N4-T12	3.5	12	3	6	3 1/2	4 1/4	8 3/8	1	1 1/8
SCB354-1F-6N4-T0	90 MM	0	3	6	3 1/2	4 1/4	8 3/8	1	1 1/8
SCB400-1 1/4F-6N4-T12	4	12	3	6	4	4	9	1 1/4	1 1/8
SCB400-1F-4N4-T12	4	12	2	4	4	4	9	1	1 1/8
SCB400-1F-4N4-T10	4	10	2	4	4	4	9	1	1 1/8
SCB500-3/4F-6N4-T10	5	10	3	6	4	4	9	3/4	1 1/8
SCB500-3/4F-6N4-T12	5	10	3	6	4	4	9	3/4	1 1/8