



ASCEND Fiber Housings in Rack

Features

- High Density: 1RU/144F, 2RU/288F and 4RU/576F
- 19/23" rack-mountable
- Galvannealed steel construction
- Hinged front and rear doors and removable back cover
- BASE-8, BASE-12 and BASE-24 compatibility
- Interchangeable cassette options for multiple applications
- Cassettes install independently from front or rear of housing
- Trunk cable management area
- Compatible with all ASCEND Cassettes

Applications

- Data Centers
- Central Offices
- Headends
- Structured Cabling Networks
- Wavelength Division Multiplexing (WDM)

ASCEND™ Fiber Housings

ASCEND fiber housings are available in 1RU, 2RU and 4RU sizes with densities of up to 144, 288, and 576 fibers, respectively. Designed to support incremental growth or a full-scale deployment, ASCEND housings provide the ultimate in ease-of-use and fiber management features.

ASCEND housings are 19/23" rack mountable and constructed using galvannealed steel for an extended service life. The front and rear doors are both hinged on the bottom, while the rear section of the housing cover is removable for unobstructed access to all connector interfaces. Integrated routing rings at the front of the trays enable secure and organized routing of patch cords which facilitates efficient Moves, Adds and Changes (MACs).

ASCEND housings are compatible with a wide variety of ASCEND optical cassettes which can be mixed and matched within the same enclosure to offer plug-and-play versatility in BASE-8 and BASE-12 configurations. Cassettes can be independently installed from the front or rear of the housing onto a sliding tray system.

The rear of the housing incorporates a trunk cable management area which features multiple cable mounting positions that are designed to securely manage slack while allowing the trays to slide in/out for installation and service.

Ordering Information

	RACK UNITS	TRAYS
ASCEND	1RU	12
	1RU	8 = BASE-8
	2RU	12 = BASE-12
	4RU	W = WDM

PANEL TYPE	DESCRIPTION	AFL NO.
BASE-8	ASCEND HOUSING, 1RU, BASE-8 TRAYS	ASCEND-1RU-8
	ASCEND HOUSING, 2RU, BASE-8 TRAYS	ASCEND-2RU-8
	ASCEND HOUSING, 4RU, BASE-8 TRAYS	ASCEND-4RU-8
BASE-12	ASCEND HOUSING, 1RU, BASE-12 TRAYS	ASCEND-1RU-12
	ASCEND HOUSING, 2RU, BASE-12 TRAYS	ASCEND-2RU-12
	ASCEND HOUSING, 4RU, BASE-12 TRAYS	ASCEND-4RU-12
WDM	ASCEND HOUSING, 1RU, WDM TRAYS	ASCEND-1RU-W
	ASCEND HOUSING, 2RU, WDM TRAYS	ASCEND-2RU-W
	ASCEND HOUSING, 4RU, WDM TRAYS	ASCEND-4RU-W

ASCEND™ Fiber Housings



ASCEND 1RU



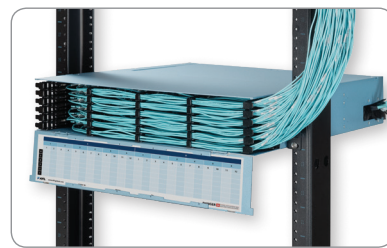
ASCEND 1RU front



ASCEND 1RU rear



ASCEND 2RU



ASCEND 2RU front



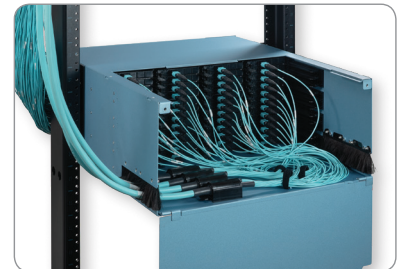
ASCEND 2RU rear



ASCEND 4RU



ASCEND 4RU front



ASCEND 4RU rear

Specifications

PARAMETER	MODEL		
	ASCEND 1U	ASCEND 2RU	ASCEND 4RU
Rack Space	1 RU	2 RU	4 RU
Fiber Density	144F	288F	576F
Cassette Capacity	12 x 12F Cassettes 18 x 8F Cassettes	24 x 12F Cassettes 36 x 8F Cassettes	48 x 12F Cassettes 72 x 8F Cassettes
Dimensions* (HxWxD)	44.5 x 500 x 438 mm 1.75 x 19.7 x 17.25 in	87.6 x 500 x 438 mm 3.5 x 19.7 x 17.25 in	176.5 x 500 x 438 mm 7.0 x 19.7 x 17.25 in
Weight	5.8 kg 12.8 lb.	10 kg 22 lb.	15.5 kg 34.2 lb.
Color	Blue	Blue	Blue
Material	Metal Components: 16 GA Steel per ASTM A366 Plastic Components: UL 94 V-2 minimum	Metal Components: 16 GA Steel per ASTM A366 Plastic Components: UL 94 V-2 minimum	Metal Components: 16 GA Steel per ASTM A366 Plastic Components: UL 94 V-2 minimum

* Not including mounting ears