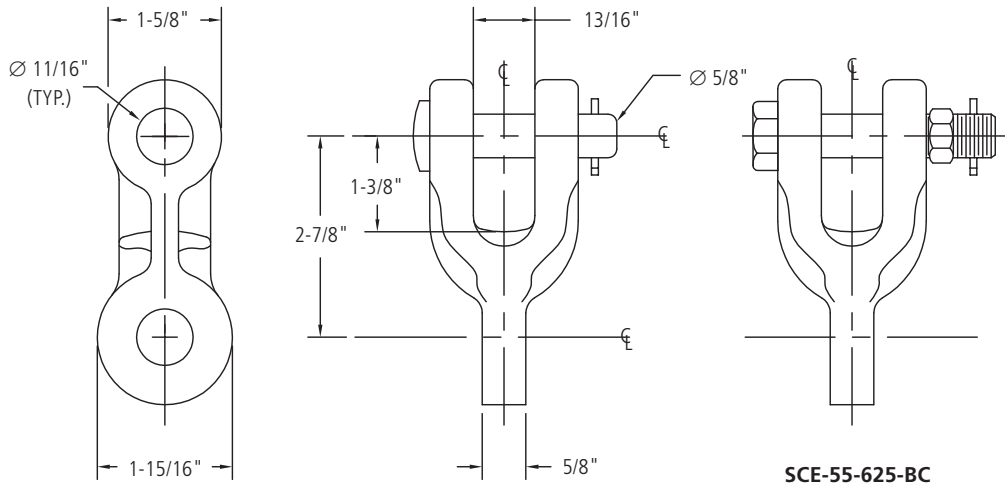


Standard Clevis Eye



MATERIAL

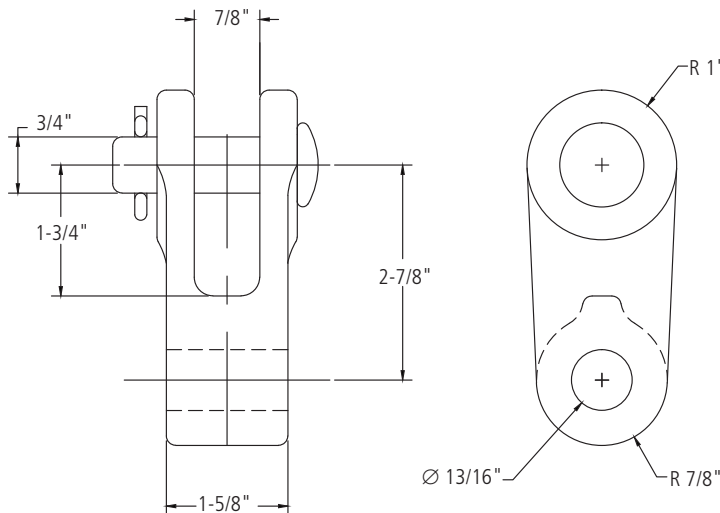
Hot Dip Galvanized Ductile Iron

Ordering Information

AFL NO.	ULTIMATE STRENGTH (LBS.)	APPROX. WEIGHT EACH (LBS.)	APPLICATION
SCE-55-625	25,000	1.35	HIBUS Double Suspension

NOTE: For Bolt, Nut and Cotter instead of Clevis Pin and Cotter, add suffix "-BC" to AFL number.

Clevis Eye



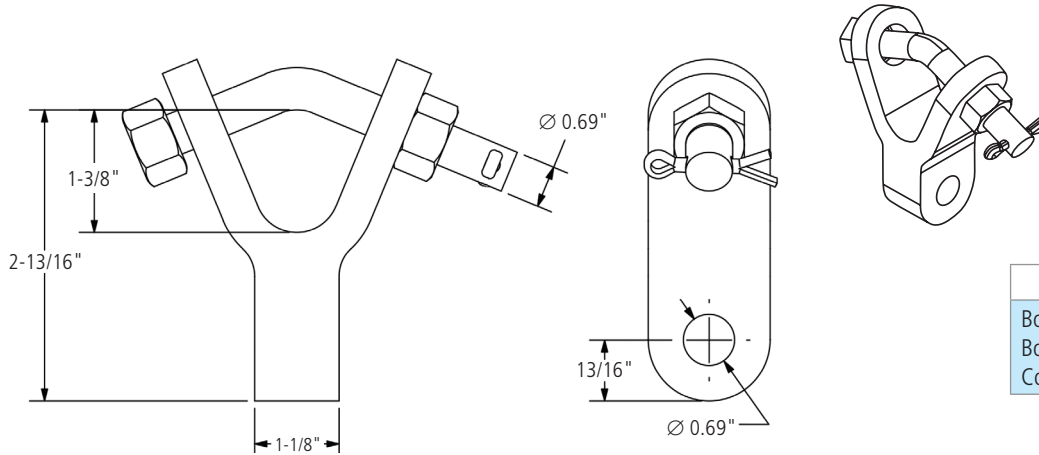
MATERIAL

Body – Ductile Iron
Pin – Galvanized Steel
Cotter Pin – Stainless Steel

Ordering Information

AFL NO.	ULTIMATE STRENGTH (LBS.)	APPROX. WEIGHT (LBS.)	APPLICATION
CE-SC	35,000	1.7	Mechanical Double Suspension

Y Clevis Eye



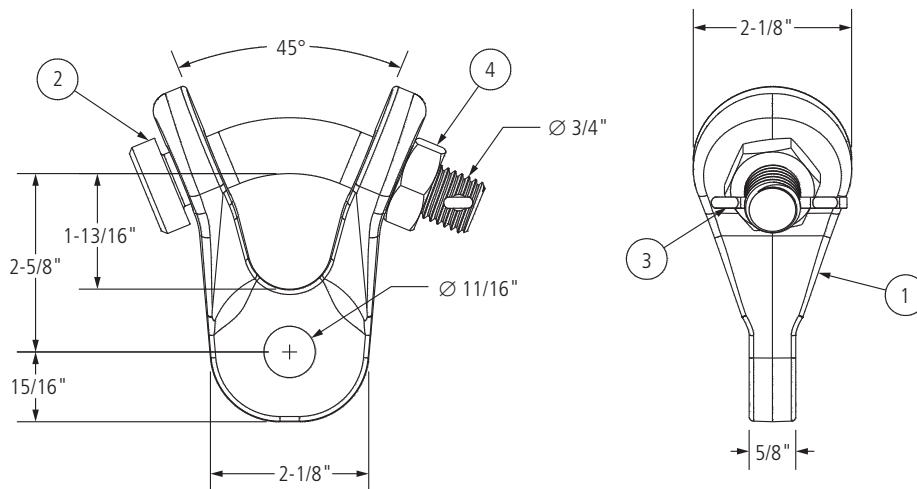
MATERIAL

Body – Forged Steel
Bolt, Nut – Galvanized Steel
Cotter Pin – Stainless Steel

Ordering Information

AFL NO.	ULTIMATE STRENGTH (LBS.)	APPROX. WEIGHT (LBS.)	APPLICATION
YCE-690-1125	30,000	2.0	Mechanical Suspension (SUME)

Y Clevis Eye 90°

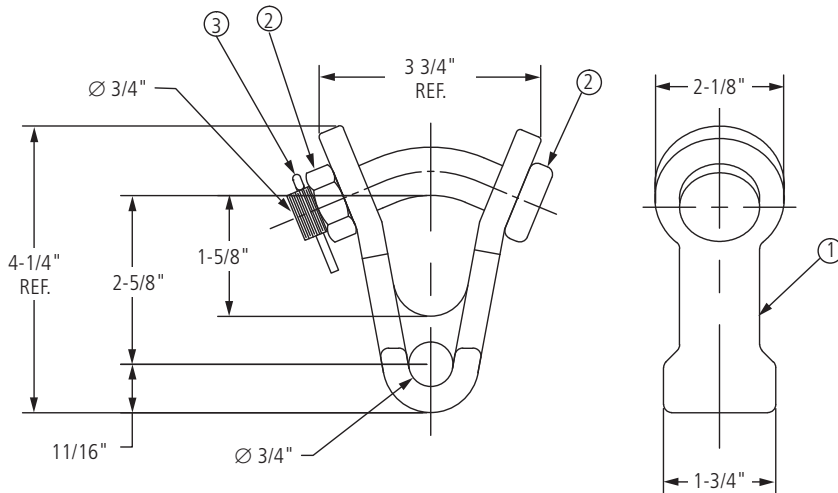


ITEM	DESCRIPTION	MATERIAL
1	Body	Forged Steel
2	Bolt	Galvanized Steel
3	Cotter Pin	Stainless Steel
4	Nut	Galvanized Steel

Ordering Information

AFL NO.	ULTIMATE STRENGTH (LBS.)	APPROX. WEIGHT (LBS.)	APPLICATION
YC90E-688-625	30,000	2.2	HIBUS Suspension

Y Clevis Eye 90° (for Mechanical Suspensions)

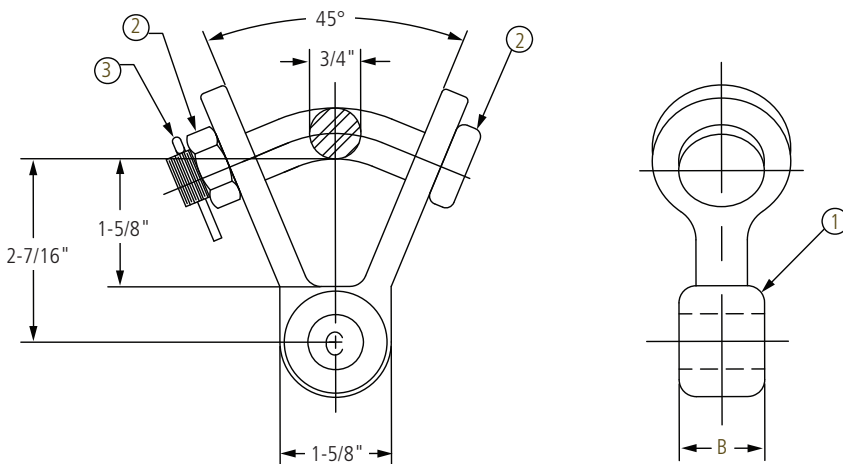


ITEM	DESCRIPTION	MATERIAL
1	Body	Forged Steel
2	Bolt, Nut	Galvanized Steel
3	Cotter Pin	Stainless Steel

Ordering Information

AFL NO.	ULTIMATE STRENGTH (LBS.)	APPROX. WEIGHT (LBS.)	APPLICATION
YC90E-750-1750	30,000	2.4	Mechanical Suspension (SUNE)

Y Clevis Eye 90° (for Use with Formed Wire Suspension)



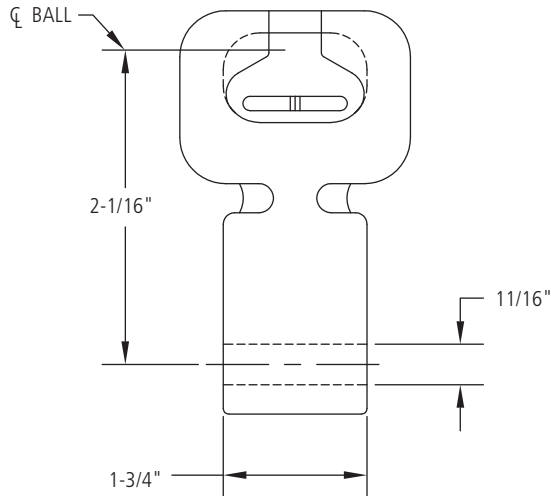
ITEM	DESCRIPTION	MATERIAL
1	Body	Forged Steel
2	Bolt, Nut	Galvanized Steel
3	Cotter Pin	Stainless Steel

Ordering Information

AFL NO.	CABLE DIAMETER RANGE		APPROX. DIMENSIONS In. (mm)		ULTIMATE STRENGTH (LBS.)	APPLICATION NOTES
	(In.)	(mm)	B	C		
YCE90FS354/458	0.354-0.458	9.0-11.6	5/8 (15.0)	11/16 (17.5)	15,000	Formed Wire Suspension
YCE90FS459/625	0.459-0.625	11.7-15.9	3/4 (19.1)	11/16 (17.5)	20,000	
YCE90FS626/1057	0.626-1.057	16.0-26.8	1 1/16 (27)	13/16 (20.6)	25,000	

NOTE: For use with formed wire hardware.

Socket Eye SC



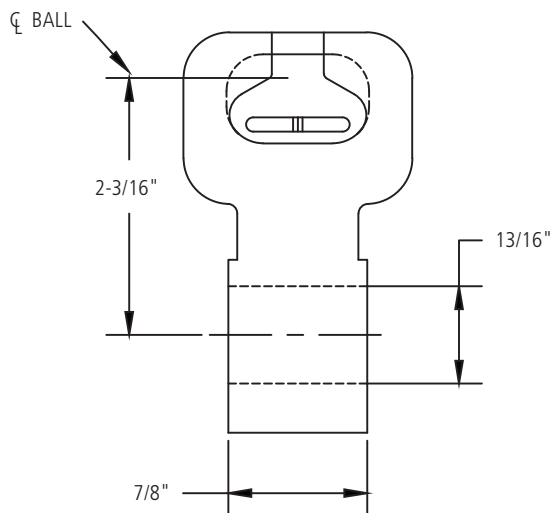
MATERIAL

Body, Clevis Bolt – Galvanized Steel
Cotter Pin – Stainless Steel

Ordering Information

AFL NO.	ULTIMATE STRENGTH (LBS.)	APPROX. WEIGHT EACH (LBS.)
SE-SC	30,000	1.80

Socket Eye BDE



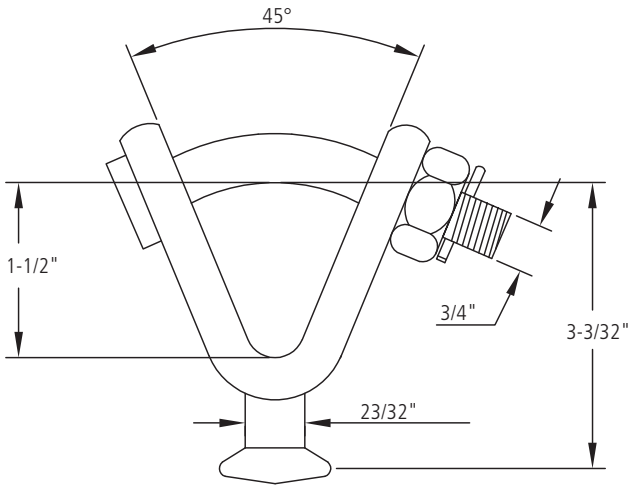
MATERIAL

Galvanized Ductile Iron

Ordering Information

AFL NO.	ULTIMATE STRENGTH (LBS.)	APPROX. WEIGHT EACH (LBS.)
SE-BDE	30,000	1.21

Ball Y Clevis



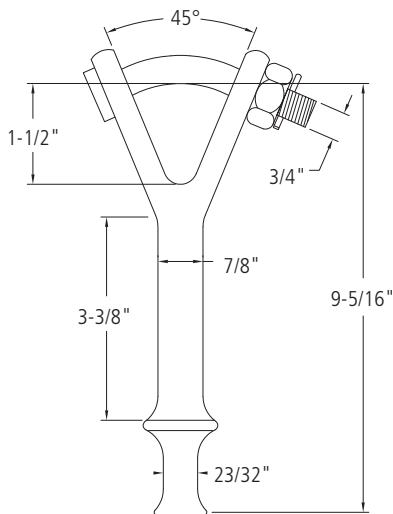
MATERIAL

Body, Clevis Bolt – Galvanized Steel
Cotter Pin – Stainless Steel

Ordering Information

AFL NO.	ULTIMATE STRENGTH (LBS.)	APPROX. WEIGHT EACH (LBS.)
YCBS	30,000	1.90

Hot Line Y Clevis Ball



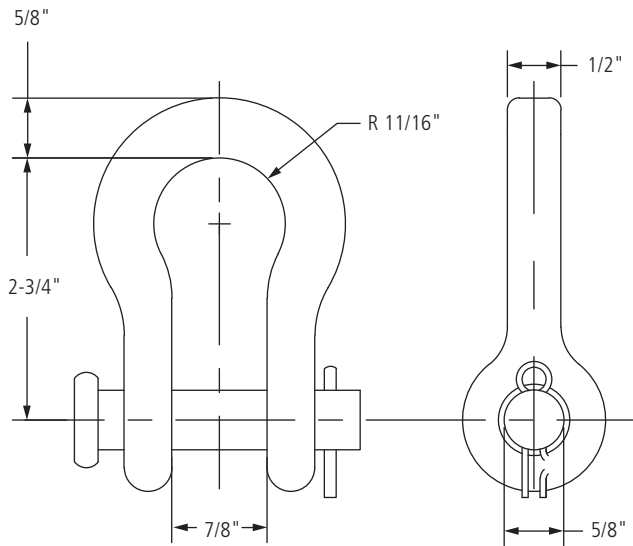
MATERIAL

Body, Clevis Bolt – Galvanized Steel
Cotter Pin – Stainless Steel

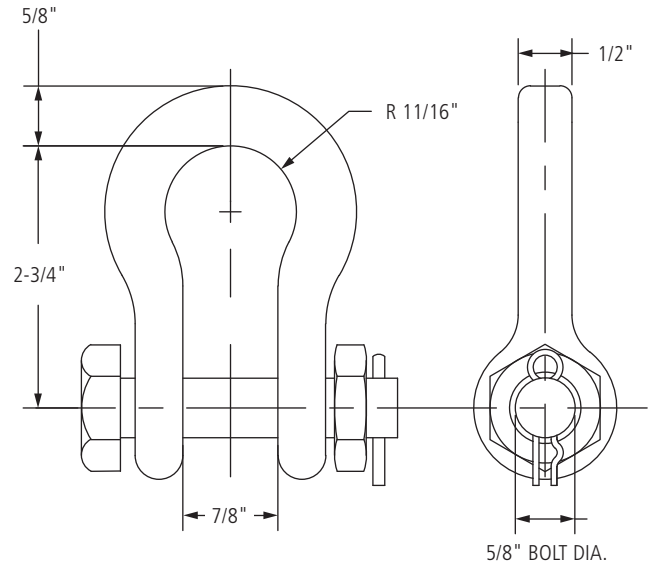
Ordering Information

AFL NO.	ULTIMATE STRENGTH (LBS.)	APPROX. WEIGHT EACH (LBS.)
YCBHL	30,000	2.80

Anchor Shackle 30L



Anchor Shackle 30L-BNC



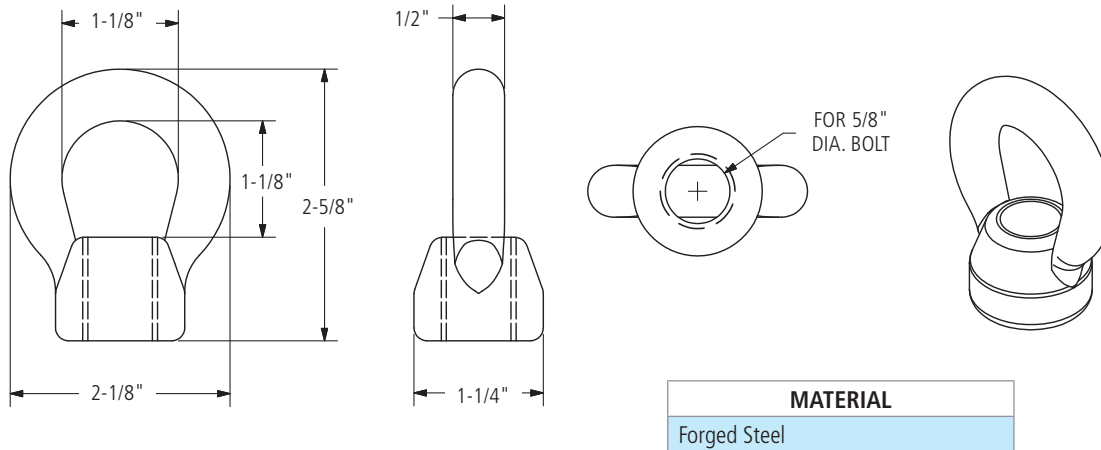
MATERIAL

Body – Forged Steel
Bolt – Galvanized Steel
Cotter Pin – Stainless Steel

Ordering Information

AFL NO.	ULTIMATE STRENGTH (LBS.)	APPROX. WEIGHT EACH (LBS.)
ANSH30L	30,000	1.1
ANSH30L-BNC	30,000	1.1

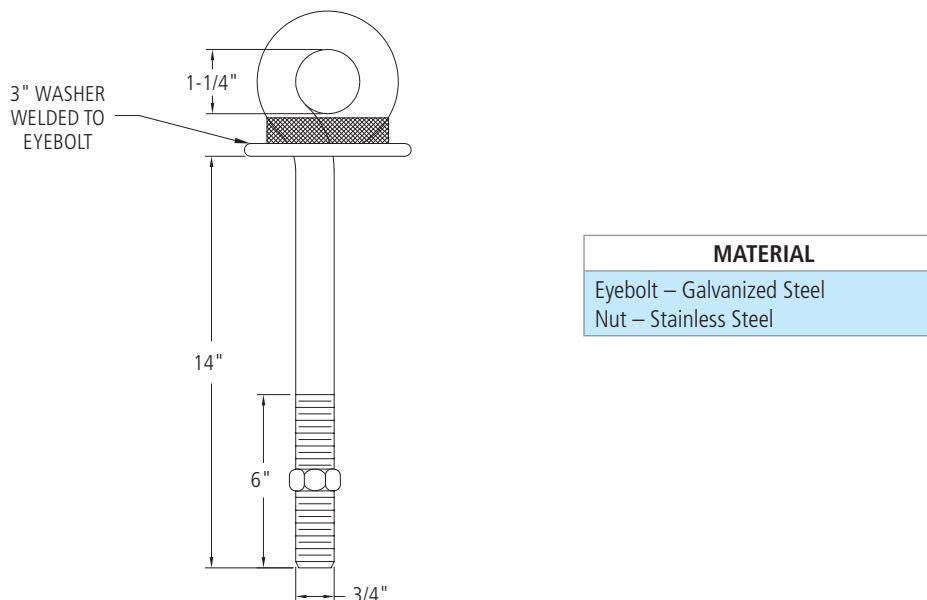
Oval Eye Nut



Ordering Information

AFL NO.	ULTIMATE STRENGTH (LBS.)	APPROX. WEIGHT EACH (LBS.)
PSM00221	12,400	0.46

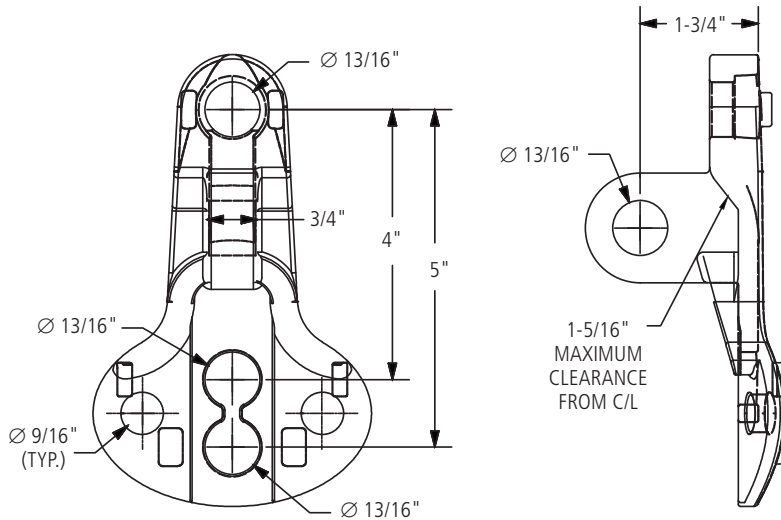
Shoulder Eye Bolt



Ordering Information

AFL NO.	MINIMUM TENSILE STRENGTH (LBS.)	APPROX. WEIGHT PER 100 PIECES (LBS.)
SEB-3/4-14	18,350	320

Pole Eye Plate



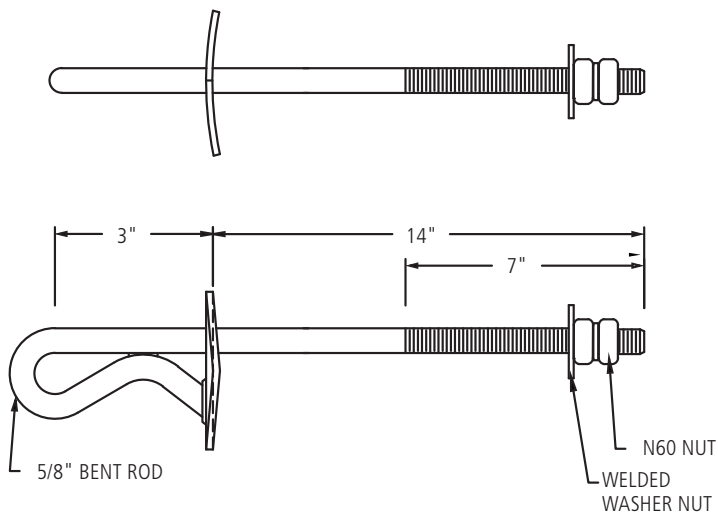
MATERIAL

Hot Dip Galvanized Ductile Iron

Ordering Information

AFL NO.	ULTIMATE STRENGTH (LBS.)	APPROX. WEIGHT EACH (LBS.)
EP1	21,000	2.2

Shield Wire Support



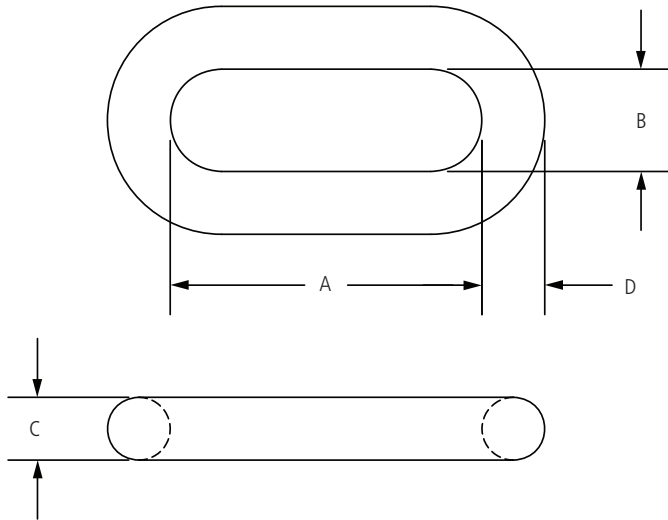
MATERIAL

Galvanized Steel

Ordering Information

AFL NO.	ULTIMATE STRENGTH (LBS.)	APPROX. WEIGHT PER BOX OF 4 PIECES (LBS.)
SFOSB-WP-14	5,000	2.50

Chain Link

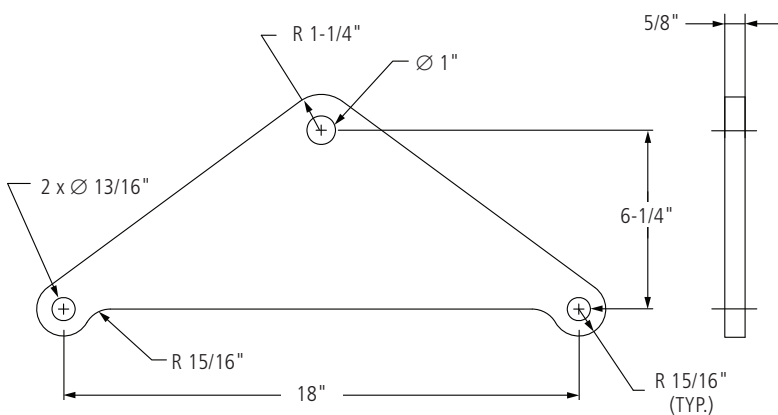


MATERIAL
Forged Steel

Ordering Information

AFL NO.	ULTIMATE STRENGTH (LBS.)	DIMENSIONS IN INCHES			
		A	B	C	D
CL-4	30,000	2-1/4	1	1/2	1/2
CL-5	40,000	3-1/4	1	5/8	5/8

Yoke Plate

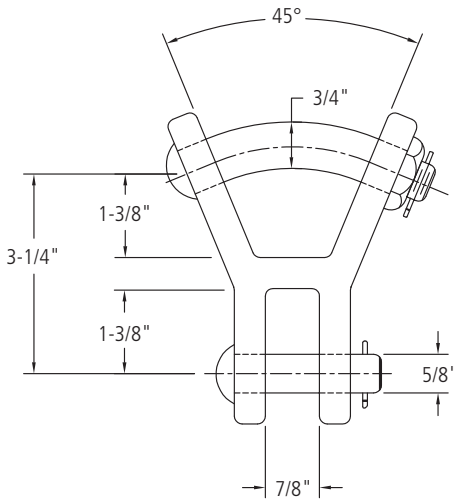


MATERIAL
Galvanized Steel

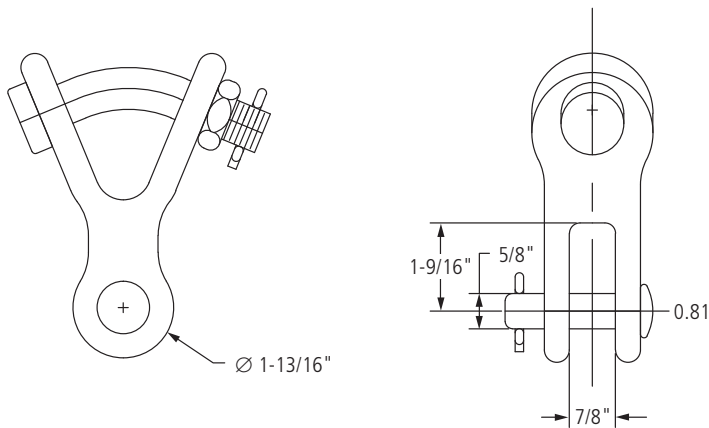
Ordering Information

AFL NO.	ULTIMATE STRENGTH (LBS.)	APPROX. WEIGHT EACH (LBS.)	APPLICATION
SUMEYP	40,000	14.8	Double Mechanical Suspension

Y Clevis Clevis



Y Clevis Clevis 90°



MATERIAL

Body – Galvanized Ductile Iron
Hardware – Galvanized Steel

Ordering Information

AFL NO.	ULTIMATE STRENGTH (LBS.)	APPROX. WEIGHT (LBS.)	APPLICATION
YCC	30,000	2.50	HIBUS Double Suspension and Mechanical Double Suspension
YCC-90	30,000	1.50	