

TYPE WTPI-N-AA, WTPIA-N-45-AA, WTPIA-N-90-AA

Internal Welded Terminal

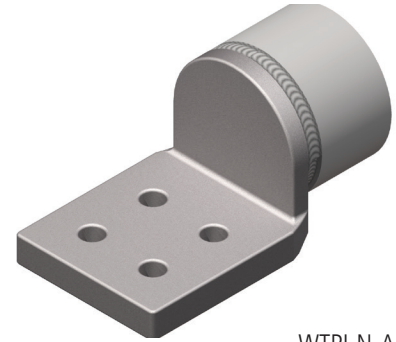
WTPI-N-AA the pad and pipe run parallel, WTPIA-N-45-AA the pad is at a 45° angle to the pipe, and WTPIA-N-90-AA the pad is at a 90° angle to the pipe.

Material

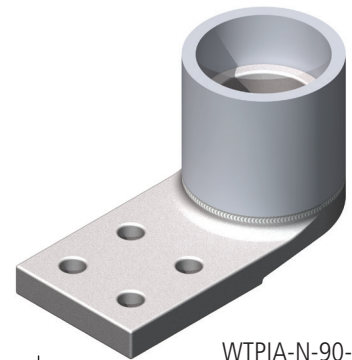
Aluminum

Notes

- Add "U" for undrilled
- Add "F" for finished on both sides. EX: WTP75-2NF-AA
- For a 1" SPS pipe to a 3" NEMA pad at 45°, order: WTPIA100-4N-45-AA
- For a 2" SPS pipe to a 4" NEMA pad at 90°, order: WTPIA200-4N4-90-AA
- For a 2" SPS pipe to a 4" NEMA pad finished on both sides, order: WTPI200-4N4F-AA
- For a 1" SPS pipe to a 4" pad undrilled order: WTPI100-4N4U-AA



WTPI-N-AA



WTPIA-N-90-AA



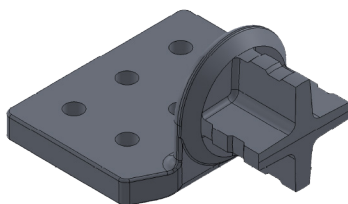
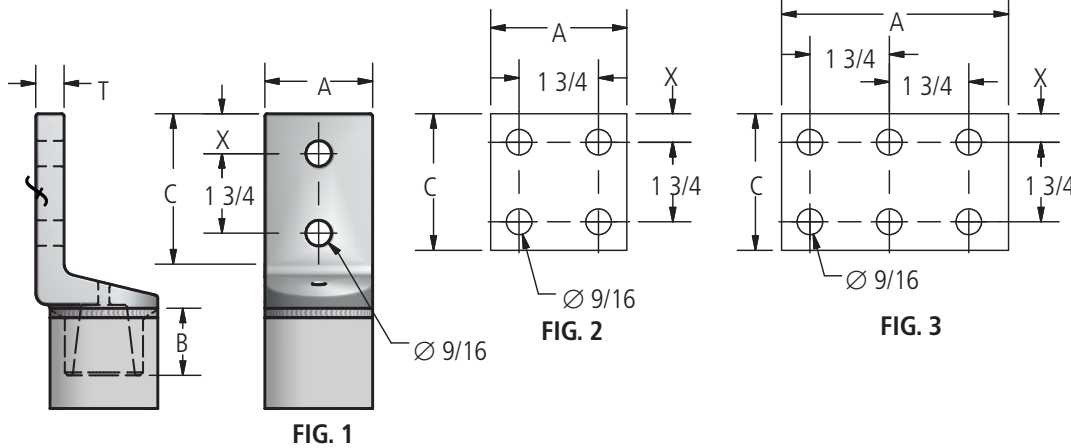
WTPI-N-AA



WTPIA-N-45-AA



WTPIA-N-90-AA



CROSS DESIGN

AFL's Dossert® product line offers a wide range of substation accessories in low voltage up to 765 kV applications in bronze or aluminum materials.

continued
→

TYPE WTPI-N-AA, WTPIA-N-45-AA, WTPIA-N-90-AA

Internal Welded Terminal

Ordering Information

Catalog Number		SPS	Figure Number	Dimensions in Inches				
SCH 40	SCH 80			A	B	C	T	X
WTPI75-2N-AA	WTPI75E-2N-AA	3/4	1	1-1/2	3/4	3	3/8	5/8
WTPI100-2N-AA	WTPI100E-2N-AA	1	1	1-1/2	3/4	3	3/8	5/8
WTPI100-4N-AA	WTPI100E-4N-AA	1	2	3	3/4	3	3/8	5/8
WTPI100-4N4-AA	WTPI100E-4N4-AA	1	2	4	3/4	4	3/8	1-1/8
WTPI150-2N-AA	WTPI150E-2N-AA	1-1/2	1	2	1	3	1/2	5/8
WTPI150-4N-AA	WTPI150E-4N-AA	1-1/2	2	3	1	3	1/2	5/8
WTPI150-4N4-AA	WTPI150E-4N4-AA	1-1/2	2	4	1	4	1/2	1-1/8
WTPI200-2N-AA	WTPI200E-2N-AA	2	1	2	1-1/4	3	5/8	5/8
WTPI200-4N-AA	WTPI200E-4N-AA	2	2	3	1-1/4	3	5/8	5/8
WTPI200-4N4-AA	WTPI200E-4N4-AA	2	2	4	1-1/4	4	5/8	1-1/8
WTPI200-6N4-AA*	WTPI200E-6N4-AA*	2	3	6	2	4	5/8	1-1/8
WTPI250-2N-AA	WTPI250E-2N-AA	2-1/2	1	2	1-1/2	3	5/8	5/8
WTPI250-4N-AA	WTPI250E-4N-AA	2-1/2	2	3	1-1/2	3	5/8	5/8
WTPI250-4N4-AA	WTPI250E-4N4-AA	2-1/2	2	4	1-1/2	4	5/8	1-1/8
WTPI300-2N-AA	WTPI300E-2N-AA	3	1	2	1-3/4	3	5/8	5/8
WTPI300-4N-AA	WTPI300E-4N-AA	3	2	3	1-3/4	3	3/4	5/8
WTPI300-4N4-AA	WTPI300E-4N4-AA	3	2	4	1-3/4	4	5/8	1-1/8
WTPI300-6N4-AA*	WTPI300E-6N4-AA*	3	3	6	2	4	3/4	1-1/8
WTPI350-4N-AA	WTPI350E-4N-AA	3-1/2	2	3	2	3	3/4	5/8
WTPI350-4N4-AA*	WTPI350E-4N4-AA*	3-1/2	2	4	2	4	3/4	1-1/8
WTPI400-6N4-AA	WTPI400E-6N4-AA	4	3	6	2-1/4	4	3/4	1-1/8
WTPI400-4N-AA	WTPI400E-4N-AA	4	2	3	2-1/4	3	3/4	5/8
WTPI400-4N4-AA	WTPI400E-4N4-AA	4	2	4	2-1/4	4	3/4	1-1/8
WTPI500-4N-AA	WTPI500E-4N-AA	5	2	3	2-7/8	3	7/8	5/8
WTPI500-4N4-AA	WTPI500E-4N4-AA	5	2	4	2-7/8	4	7/8	1-1/8
WTPI600-4N-AA	WTPI600E-4N-AA	6	2	3	3-3/8	3	1	5/8
WTPI600-4N4-AA	WTPI600E-4N4-AA	6	2	4	3-3/8	4	1	1-1/8

* Cross Design