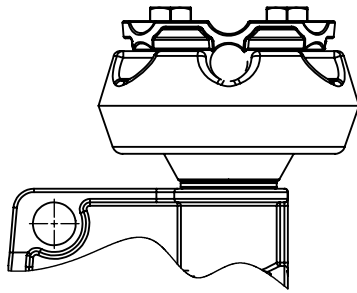


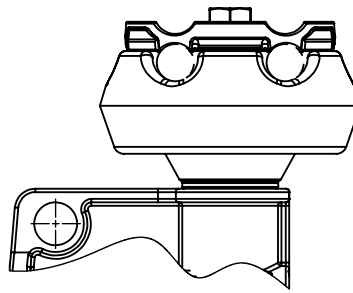
THIS DRAWING AND ALL INFORMATION ON IT IS THE PROPERTY OF AFL. IT IS CONFIDENTIAL AND IT IS GIVEN TO YOU FOR A LIMITED PURPOSE AND MUST BE RETURNED UPON REQUEST. NEITHER THIS DRAWING OR ANY PART OF IT NOR ANY INFORMATION CONCERNING IT MAY BE COPIED, EXHIBITED, OR FURNISHED TO OTHERS NOR PHOTOGRAPHS TAKEN OF ANY ARTICLE FABRICATED OR ASSEMBLED FROM THE DRAWING WITHOUT THE CONSENT OF AFL.

ITEM NO:

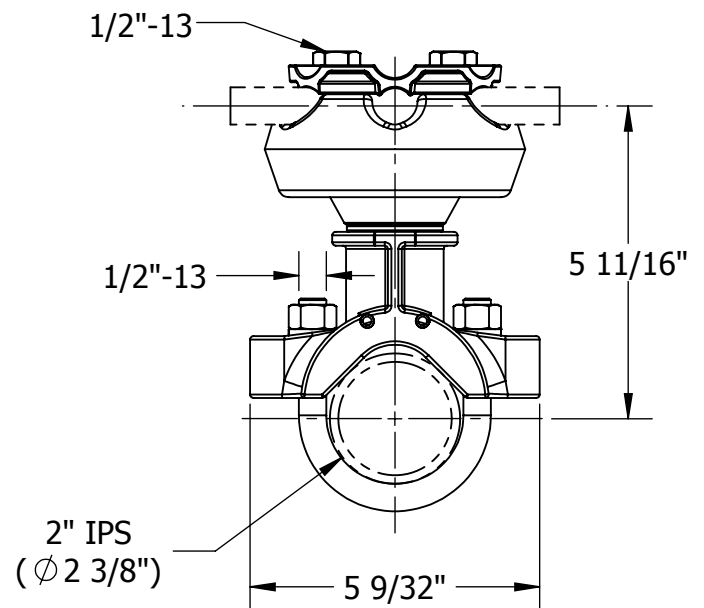
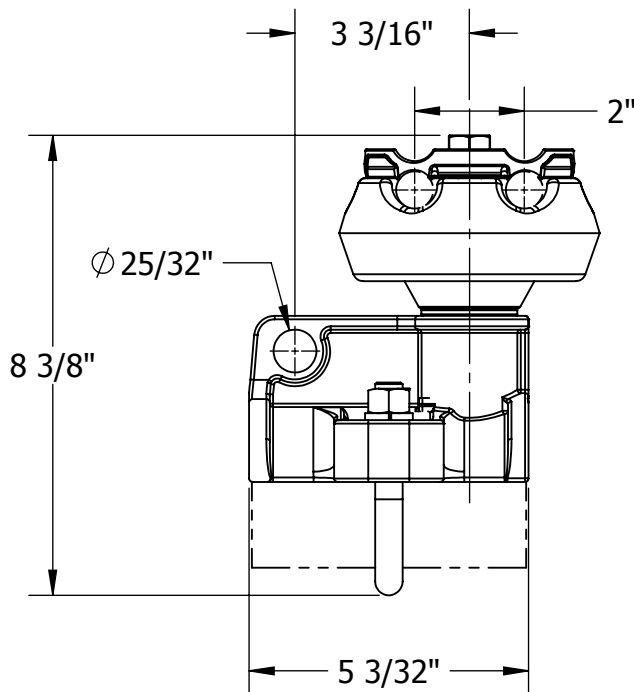
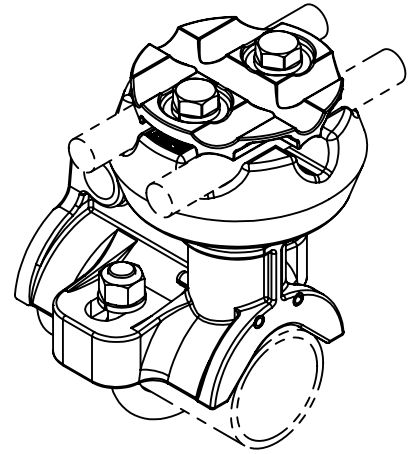
DWG. NO:



SINGLE ORIENTATION



TWIN ORIENTATION



MATERIAL:

CLAMP BODY - ALUMINUM ALLOY ASTM B26

INSULATOR SADDLE - FIBERGLASS POLYESTER

BOLTS, NUTS & LOCKWASHERS - SILICON BRONZE

U-BOLTS & LOCKWASHERS - STAINLESS STEEL

BOLT SIZES	WRENCH/ SOCKET SIZES	TORQUE VALUES (FT-LBS)
1/2-13	3/4 HEX	40

WT: 5.93 LB

LOCATION

CONTRACT NO

CUST / CONTR

REVISIONS

REV	DESCRIPTION	DATE	BY	APR

DRN BY:
AY

DRN DATE:
10.21.14

CHK BY:
JL

CHK DATE:
10.21.14

PA 2017.270.0

AFL DOSSERT®

CLAMP, MW INSUL, TOP MNT, 500-350 MCM S/T
WIRE, 2" IPS, AL

REV
0

PART NO:

MSCAI821-200A07

1 OF 1