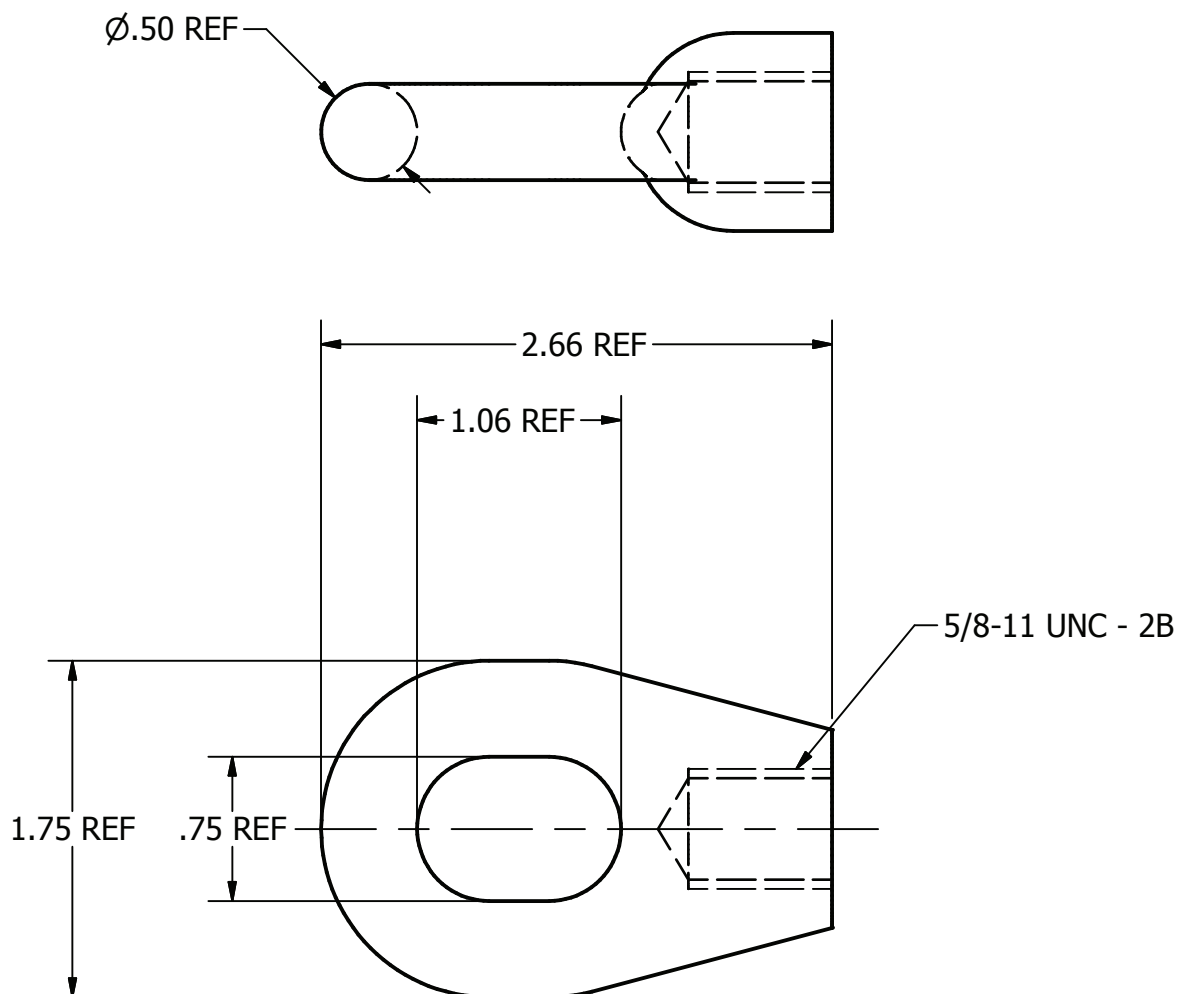


ITEM NO

DWG NO

THIS DRAWING AND ALL INFORMATION ON IT IS THE PROPERTY OF AFL. IT IS CONFIDENTIAL AND IT IS GIVEN TO YOU FOR A LIMITED PURPOSE AND MUST BE RETURNED UPON REQUEST. NEITHER THIS DRAWING OR ANY PART OF IT NOR ANY INFORMATION CONCERNING IT MAY BE COPIED, EXHIBITED, OR FURNISHED TO OTHERS NOR PHOTOGRAPHS TAKEN OF ANY ARTICLE FABRICATED OR ASSEMBLED FROM THE DRAWING WITHOUT THE CONSENT OF AFL.





MATERIAL (PRELIMINARY)

ALUMINUM BRONZE

ULTIMATE BREAKING STRENGTH - 10,000 LBS

MAXIMUM WORKING LOAD - 5000 LBS

SCALE 1 : 1

LOCATION					CONTRACT NO		CUST / CONTR																										
<div>REVISIONS</div> <table><thead><tr><th>REV</th><th>DESCRIPTION</th><th>DATE</th><th>BY</th><th>APR</th></tr></thead><tbody><tr><td></td><td></td><td></td><td></td><td></td></tr><tr><td></td><td></td><td></td><td></td><td></td></tr><tr><td></td><td></td><td></td><td></td><td></td></tr><tr><td></td><td></td><td></td><td></td><td></td></tr></tbody></table>					REV	DESCRIPTION	DATE	BY	APR																					DRN BY: BH		<div> </div>	
					REV	DESCRIPTION	DATE	BY	APR																								
DRN DATE: 10-14-09																																	
CHK BY:																																	
CHK DATE:																																	
		EYE, FITTING, 1.06 X .75 X .50 DIA																															
		REV 0	EYE-625-01		1 OF 1																												

DRN BY:
BH
DRN DATE:
10-14-09
CHK BY:

CHK DATE:

REV
0