



# 230 kV Aluminum Bolted Parallel Clamps

**DOSSERT®**

## TYPE PC-AA

### Connector For Two Cables In Parallel

A clamp type connector for connecting two cable or wire conductors in parallel. Any combination accommodating unequal size cables is available.

#### Material

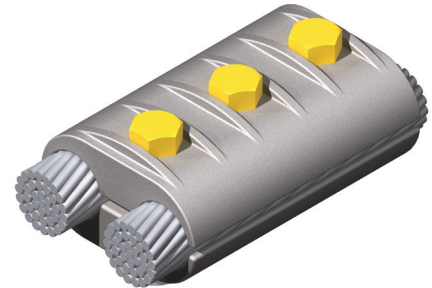
Aluminum Alloy

#### Hardware

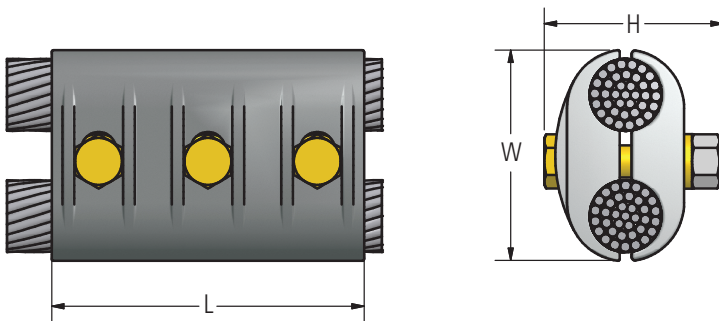
Yellow anodized aluminum bolts, nuts and lockwashers.

#### Notes

1. To order an unequal size cable clamp create a catalog number. EX: for a 636 MCM run and 300 MCM tap, order: PC65-30-AA.
2. For Galvanized steel hardware, add suffix "-GS" to catalog number order: PC65-30-AA-GS.
3. For Grade Five Galvanized Steel Hardware, add "-GS5" to catalog number. EX: PC25-25-AA-GS5



230 kV – Bolted Parallel Clamps



## Ordering Information

CATALOG NUMBER	CONDUCTOR RANGE				DIMENSIONS IN INCHES			BOLT SIZE
	ACSR		ALUM. OR CU.		H	L	W	
	MIN	MAX	MIN	MAX				
PC10-10-AA	1(6/1)	80(8/1)	2/0 SOL	1/0 STR	1 3/4	3	1 17/32	1/2
PC13-13-AA	1/0(6/1)		3/0 SOL	2/0 STR	1 3/4	3	1 5/8	1/2
PC17-17-AA	2/0	110.8(12/7)	4/0 SOL	3/0 STR	2	4	1 27/32	1/2
PC21-21-AA	3/0	134.6(12/7)	4/0 STR		2	4	2 1/32	1/2
PC25-25-AA	4/0	203(8/7)	250 MCM	266.8 MCM	2 1/4	4	2 1/16	1/2
PC30-30-AA	176.9(12/7)	266.8(26/7)	300 MCM		2 1/4	4 1/2	2 9/32	1/2
PC35-35-AA	211.3(12/7)	336.4(18/1)	336.4 MCM	350 MCM	2 1/4	4 1/2	2 3/8	1/2
PC40-40-AA	203.2(16/19)	397.5(18/1)	394.5 MCM	400 MCM	2 1/2	5	2 1/2	1/2
PC50-50-AA	397.5(26/7)	477(18/1)	450 MCM	500 MCM	2 1/2	5	2 5/8	1/2
PC60-60-AA	477(24/7)	477(30/7)	550 MCM	600 MCM	2 1/2	5	2 27/32	1/2
PC65-65-AA	500(30/7)	636(36/1)	636 MCM	650 MCM	2 1/2	5	3	1/2
PC75-75-AA	605(26/7)	666.6(24/7)	700 MCM	750 MCM	2 1/2	5 1/4	3 1/16	1/2

continued  
→



# 230 kV Aluminum Bolted Parallel Clamps

## DOSSERT®

### TYPE PC-AA

Connector For Two Cables In Parallel

#### Ordering Information (cont.)

CATALOG NUMBER	CONDUCTOR RANGE				DIMENSIONS IN INCHES			BOLT SIZE	
	ACSR		ALUM. OR CU.		H	L	W		
	MIN	MAX	MIN	MAX					
PC80-10-AA	1(6/1)	800 MCM	2/0 SOL	800 MCM	3 1/16	5 1/4	2 9/16	1/2	
PC80-13-AA	1/0(6/1)	795(36/1)	3/0 SOL	800 MCM	3 1/16	5 1/4	2 9/16	1/2	
PC80-80-AA	715.5(24/7,26/7)	795(36/1)	795 MCM	800 MCM	2 1/2	5 1/4	3 1/8	1/2	
PC103-103-AA	795(24/7)	954(54/7)	900 MCM	1033.5 MCM	2 3/4	5 1/2	3 3/8	1/2	
PC127-127-AA	1033.5(36/1)	1113(54/19)	1100 MCM	1272 MCM	3	5 1/2	3 5/8	1/2	
PC150-150-AA	1192.5(45/7)	1351.5(54/19)	1300 MCM	1500 MCM	3 1/2	6	4 1/8	5/8	
PC175-127-AA	Large Groove	1431(45/7)	1590(54/19)	1590 MCM	1750 MCM	3 7/8	6	4 3/8	1/2
	Small Groove	1033.5(36/1)	1113(54/19)	1100 MCM	1272 MCM				
PC175-175-AA	1431(45/7)	1590(54/19)	1590 MCM	1750 MCM	3 1/2	6	4 1/2	5/8	
PC200-200-AA	1590(54/19)	1780(54/19)	1800 MCM	2000 MCM	3 1/2	6	4 1/2	5/8	
PC250-250-AA	2156	2312	2250 MCM	2500 MCM	4 1/4	7 3/4	5 1/4	5/8	
PC350-350-AA	–	–	3000 MCM	3500 MCM	3 1/2	6	5	5/8	