

# TYPE WTPOC-AA

## Welded Terminal Lug

### Material

Aluminum Alloy

### Notes

1. Add suffix "F" to the catalog number to add contact finish to both pad surfaces. EX: WTPOC200-2NF-AA

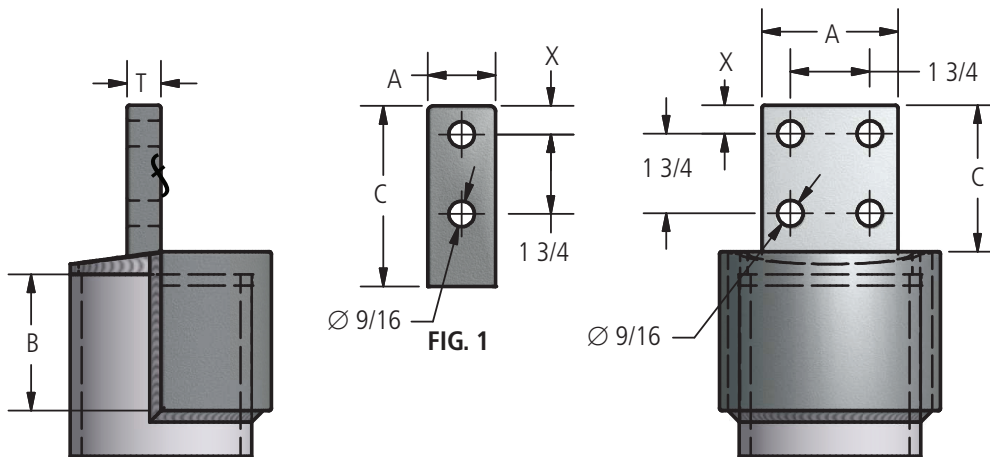
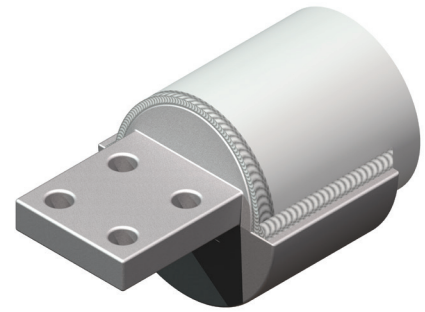


FIG. 2

### Ordering Information

Catalog Number	SPS	Figure Number	Dimensions in Inches				
			A	B	C	T	X
WTPOC100-2N-AA	1	1	2	1 1/8	3	3/8	5/8
WTPOC100-4N-AA	1	2	3	1 1/8	3	3/8	5/8
WTPOC125-2N-AA	1-1/4	1	2	1 3/8	3	3/8	5/8
WTPOC125-4N-AA	1-1/4	2	3	1 3/8	3	3/8	5/8
WTPOC150-2N-AA	1-1/2	1	2	1 5/8	3	1/2	5/8
WTPOC150-4N-AA	1-1/2	2	3	1 5/8	3	3/8	5/8
WTPOC150-4N4-AA	1-1/2	2	4	1 5/8	4	3/8	1 1/8
WTPOC200-2N-AA	2	1	2	1 7/8	3	1/2	5/8
WTPOC200-4N-AA	2	2	3	1 7/8	3	1/2	5/8
WTPOC200-4N4-AA	2	2	4	1 7/8	4	1/2	1 1/8
WTPOC250-2N-AA	2-1/2	1	2	2 1/4	3	1/2	5/8
WTPOC250-4N-AA	2-1/2	2	3	2 1/4	3	1/2	5/8
WTPOC250-4N4-AA	2-1/2	2	4	2 1/4	4	1/2	1 1/8
WTPOC300-2N-AA	3	1	2	2 1/2	3	5/8	5/8
WTPOC300-4N-AA	3	2	3	2 1/2	3	5/8	5/8
WTPOC300-4N4-AA	3	2	4	2 1/2	4	5/8	1 1/8
WTPOC350-2N-AA	3-1/2	1	2	3	3	3/4	5/8
WTPOC350-4N-AA	3-1/2	2	3	3	3	3/4	5/8
WTPOC350-4N4-AA	3-1/2	2	4	3	4	3/4	1 1/8
WTPOC400-2N-AA	4	1	2	3 1/2	3	3/4	5/8
WTPOC400-4N-AA	4	2	3	3 1/2	3	3/4	5/8
WTPOC400-4N4-AA	4	2	4	3 1/2	4	3/4	1 1/8
WTPOC500-4N-AA	5	2	3	3 1/2	3	7/8	5/8
WTPOC500-4N4-AA	5	2	4	3 1/2	4	3/4	1 1/8
WTPOC600-4N4-AA	6	2	4	3 1/2	4	1	1 1/8
WTPOC800R-4N4-AA	8" O.D.	2	4	3 1/2	4	1	1 1/8
WTPOC800-4N4-AA	8	2	4	3 1/2	4	1	1 1/8

AFL's Dossert® product line offers a wide range of substation accessories in low voltage up to 765 kV applications in bronze or aluminum materials.