



Harsh Environment Wall Enclosures – IP66 Rated*

AFL's range of IP66 rated Fibre Harsh Environment 'FHE' wall enclosures are proudly designed and assembled in Australia.

This range of enclosures cater for a variety of cable types, including loose tube and tight buffered cables and are suitable for outdoor or harsh environments where moisture and dust are an issue.

The enclosure could also be used in conjunction with our split gland plates, for applications where several fibre tubes are required to be spliced to another cable, without cutting all the other fibre tubes. This process, called "cable expressing" would also require the use of a couple of split glands.

Features and Benefits

- Water and dust tight. Rated up to IP66*
- Available in two sizes making it suitable for applications from small to large in scale
- Suitable for splicing, patching or a combination of both
- Modular apertures suitable for AFL's broad range of FRE[®] loaded coupler panels
- Choice of powder coated mild steel or uncoated 316 grade stainless steel construction, suitable for a range of harsh environments
- Key lockable compartment for security in the field
- Internal fibre management clips keep your fibres neatly routed
- Knock out gland plate or pre-punched holes suitable for a variety of cable gland configurations

Applications

- Fusion splicing of loose tube or tight buffered cables
- Direct termination of tight buffered cables
- Housing fibre optic passive devices
- Building entrance terminals
- Construction or mining sites
- Industrial or roadside harsh environments

* For more information in regards to the IP rating of your configured enclosure, please contact AFL.

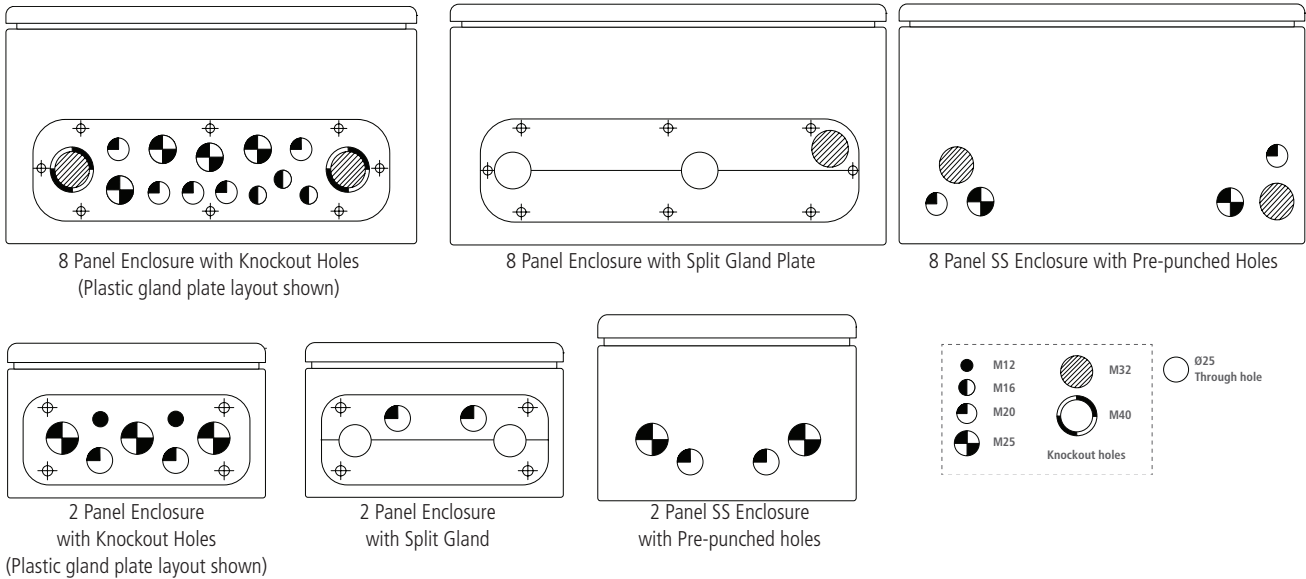
Harsh Environment Wall Enclosures – IP66 Rated*

Technical Specifications

Description	2 Panel IP Rated Wall Enclosure	8 Panel IP Rated Wall Enclosure
Dimensions W x H x D (mm)	200 x 310 x 120 (mild steel) / 155 (stainless steel)	380 x 380 x 210
Weight (kg)	4.2	10.5
Max Fibre Count	24 ST, FC, SC and 48 LC	96 ST, FC, SC and 192 LC
Max Recommended Incoming Cables	See gland plate diagram for hole combinations	
Material and Colour	Mild Sheet Steel, dipcoat primed and powder-coated (textured)- Light Grey (RAL 7035) 316 Grade Stainless steel sheet - Natural finish (Brushed)	
Accessory Kit	Wall mounting brackets, cable management clips, strain relief post, cable ties, fixing bolts and nuts, hook & loop strap, 20 mm spiral gland, IP rated locks with two keys	

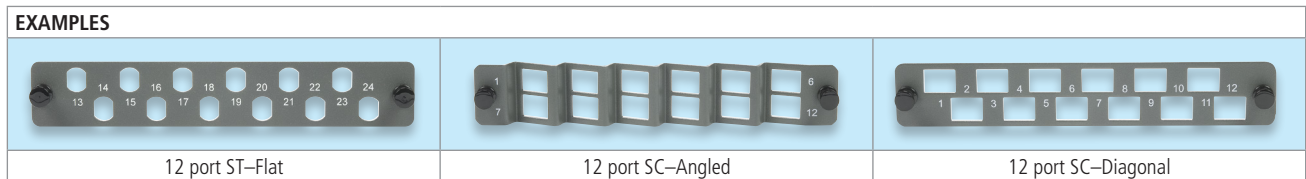
Gland Plate Diagram

Removable gland plates only available on mild steel enclosure variations. Stainless steel variations supplied standard with punched holes as shown in diagrams below. All standard punched holes are fitted with blanking plugs. Custom punched hole combinations available, please contact AFL to discuss your requirements.



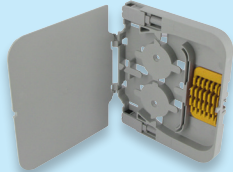

Optional Panels

AFL has a full range of coupler panels to suit the 'MOD' style enclosure. These panels include flat, angled, simplex and duplex style. Please contact AFL to discuss which panels will suit your specific needs.



Harsh Environment Wall Enclosures – IP66 Rated*

Optional Accessories

PART NUMBER	DESCRIPTION	
SPLCASS-SSH-HD-12/24	Splice Cassette Kit with HD Combs for up to 24 Splices (For 2 panel Enclosure)	
SPLCASS-LSH-HD-96/192K	Splice Cassette Kit with HD Combs for up to 192 Splices (For 8 panel Enclosure)	

AFL has a range of IP rated cable glands to suit most cable sizes and applications.

Split glands, in particular, are very useful for cable retention in applications where only a few fibre tubes need to be “expressed” and joined to other cables. They are also useful for applications where cable retention is required for loading preterminated cable assemblies into an enclosure.



Nylon Gland



Split Gland



Nickel Plated Brass Gland

Full range of additional accessories available including:

- Pigtails
- Simplex or duplex adapters
- Splicing consumables
- Termination consumables
- Pole mounting kits

These optional accessories can be ordered as a kit with any enclosure. Contact AFL with any enquiries.