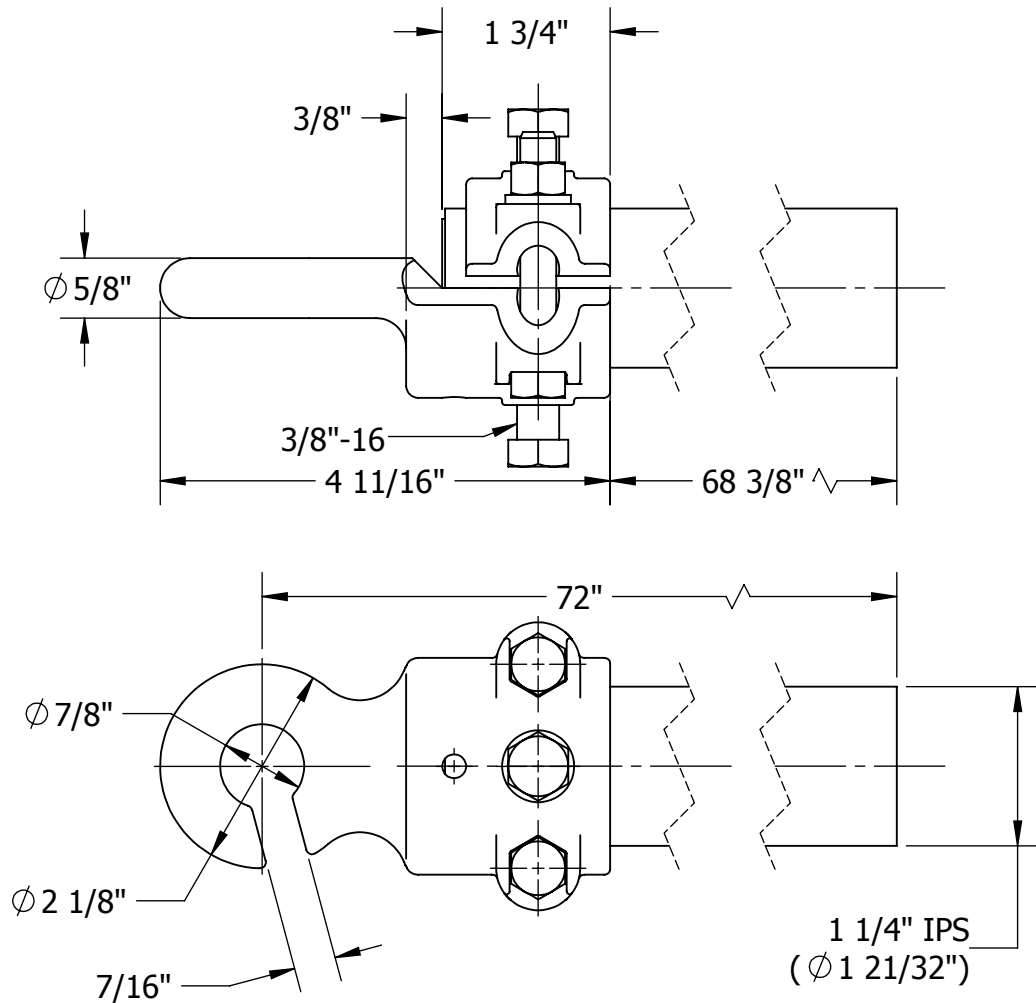


THIS DRAWING AND ALL INFORMATION ON IT IS THE PROPERTY OF AFL. IT IS CONFIDENTIAL AND IT IS GIVEN TO YOU FOR A LIMITED PURPOSE AND MUST BE RETURNED UPON REQUEST. NEITHER THIS DRAWING OR ANY PART OF IT NOR ANY INFORMATION CONCERNING IT MAY BE COPIED, EXHIBITED, OR FURNISHED TO OTHERS NOR PHOTOGRAPHS TAKEN OF ANY ARTICLE FABRICATED OR ASSEMBLED FROM THE DRAWING WITHOUT THE CONSENT OF AFL.

ITEM NO:

DWG. NO:



MATERIAL:

BODY - ALUMINUM BRONZE ASTM B30


PIPE - STEEL, H.D.G* PER ASTM A500 GRADE B

BOLTS, NUTS & LOCKWASHERS - SILICON BRONZE

BOLT SIZES	WRENCH/ SOCKET SIZES	TORQUE VALUES (FT-LBS)
3/8-16	9/16 HEX	19

WT: 19.23 LB

* = HOT DIP GALVANIZED

THIS DRAWING ASSAYS	LOCATION					CONTRACT NO		CUST / CONTR		
	REVISIONS					DRN BY: HV DRN DATE: 7.28.15 CHK BY: JL CHK DATE: 7.28.15 PA 2015.231.0				
	REV	DESCRIPTION	DATE	BY	APR		STEADY ARM, 1-1/4" IPS, STRAIGHT, SCH 80, GR-B, RL: 500, NON-INS			
REV		PART NO:		CSA125-7200-S				1 OF 1		