



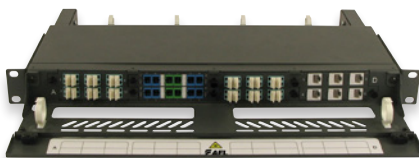
Patchcord Management and Labelling

AFL offers a range of patchcord management trays for easy management and identification of patchcords within a data rack.

These products allow patchcords to be neatly routed to ensure easy access when required.



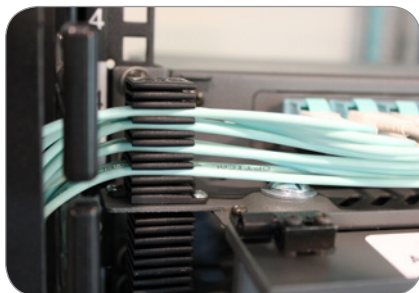
3RU Perspex cover with labelling template and connection record



Hinged C-tray mounted to mixed media panel



19" rail mounted cable tray fixed beneath enclosure



Patchcord management bracket with patchcord block mounted to management tray

Features and Benefits

- The rail mounted cable tray is designed to be mounted directly onto 19" rack mount rails for easy management of patchcords used in conjunction with any type of fixed or wingback enclosures. It can also be used for managing other patchcords on hubs, servers, patch panels etc
- The enclosure mounted cable tray is designed to be mounted onto the front of the enclosure allowing it to be used on all fixed, wingback and sliding AFL enclosures
- The enclosure mounted cable tray has two large slots along the rear of the tray, to allow for easy finger access to patchcords

Applications

- Patchcord identification and management on an enclosure, patch panel or electronic equipment within any type of 19" communications or network rack
- Data centres
- Communications racks
- Cross connect racks

Patchcord Management and Labelling



FRE-1RU-CTRAY with Identification labelling strip and patchcord management clips. Can be fastened to all AFL enclosures using 2 x M4 screws (screws supplied).



FRE-1RU-CTRAY-EX with Identification labelling strip and patchcord management clips. Can be fastened to any 19" rails.



FRE-1RU-CTRAY-LP has a low profile appearance that can allow patchcords to be secured using velcro ties. Can be fastened to all AFL enclosures using 2 x M4 screws (screws supplied).





FRE-1RU-CTRAY-HG with hinged protective cover, connectivity reference labelling and patchcord management clips. Can be fastened to all AFL enclosures using 2 x M4 screws (screws supplied).

Technical Specifications

Part Number	FRE-1RU-CTRAY	FRE-1RU-CTRAY-EX	FRE-1RU-CTRAY-LP	FRE-1RU-CTRAY-HG	FRE-2RU-CTRAY-HG	FRE-3RU-CTRAY-HG
Description	Cable tray for enclosure fixing	Extended cable tray for 19" rail fixing	Low profile cable tray for enclosure fixing	Cable tray with hinged cover for enclosure fixing	Cable tray with hinged cover for enclosure fixing	Cable tray with hinged cover for enclosure fixing
Dimensions (w) x (d) x (h)	432 x 90 x 41	482 x 90 x 31	432 x 90 x 41	432 x 98 x 42	432 x 98 x 80	432 x 98 x 125
Removable front I.D. strip	Included	Included	N/A	N/A	N/A	N/A
Hinged Cover with labelling	N/A	N/A	N/A	Included	Included	Included
Management clips	2	2	N/A	2	2	2
Suitable for Patchcord Management Brackets	Yes	Yes	No	Yes	Yes	Yes
Suitable for Clear Perspex Covers	Yes	Yes	No	No	No	No
Material	Powder coated mild steel					

Optional Accessories

PART NUMBER	DESCRIPTION	
FRE-CTRAY-1-PBL/R-K	Patchcord management L/R brackets for C-TRAY – 1RU kit	 <p>3RU Patchcord management L/R bracket kit to suit C-TRAY</p>
FRE-CTRAY-2-PBL/R-K	Patchcord management L/R brackets for C-TRAY – 2RU kit	
FRE-CTRAY-3-PBL/R-K	Patchcord management L/R brackets for C-TRAY – 3RU kit	
The kit comes complete with left and right brackets, patchcord mounting block and mounting screws. They are suitable for all 2 mm and 3 mm patchcords.		
FRE-2RUCOVER-CT	2RU Perspex cover – no labelling	 <p>2RU Perspex cover without I.D labelling strips 3RU Perspex cover with I.D labelling strips</p>
FRE-2RUCOVER-CT-ID	2RU Perspex cover – with I.D labelling	
FRE-3RUCOVER-CT	3RU Perspex cover – no labelling	
FRE-3RUCOVER-CT-ID	3RU Perspex cover – with I.D labelling	
These Perspex covers are easily fixed to the C-TRAY using push-in clips. They also have a yellow laser radiation warning badge. They offer excellent dust and patchcord protection when fitted. AFL offers a comprehensive range of labelling templates and wiring documentation to suit different applications and fibre counts. These templates apply to both the FRE-2RUCOVER-CT and FRE-3RUCOVER-CT covers.		