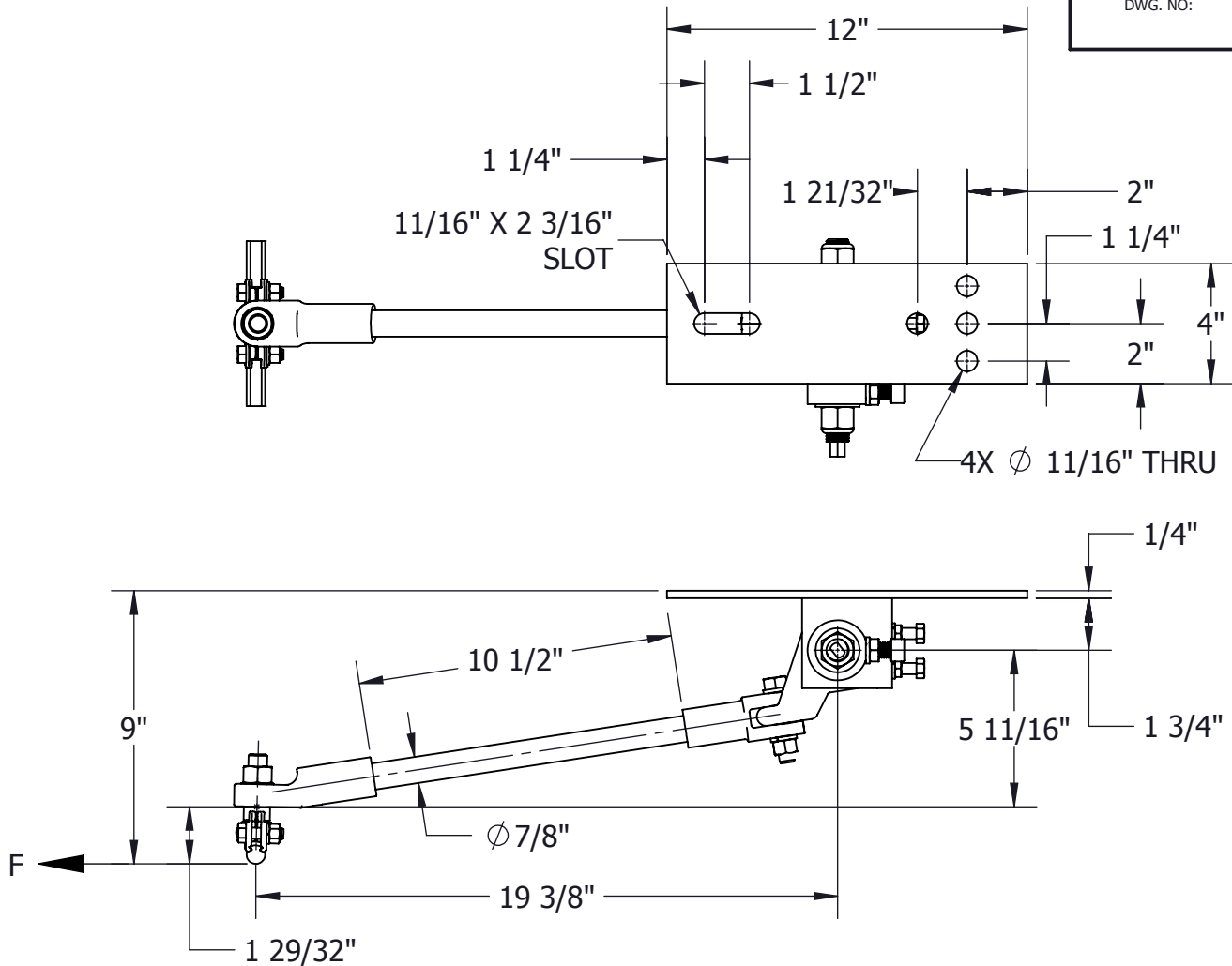


THIS DRAWING AND ALL INFORMATION ON IT IS THE PROPERTY OF AFL. IT IS CONFIDENTIAL AND IT IS GIVEN TO YOU FOR A LIMITED PURPOSE AND MUST BE RETURNED UPON REQUEST. NEITHER THIS DRAWING OR ANY PART OF IT NOR ANY INFORMATION CONCERNING IT MAY BE COPIED, EXHIBITED, OR FURNISHED TO OTHERS NOR PHOTOGRAPHS TAKEN OF ANY ARTICLE FABRICATED OR ASSEMBLED FROM THE DRAWING WITHOUT THE CONSENT OF AFL.

ITEM NO:

DWG. NO:



MATERIAL:

INSULATOR ENDS - ALUMINUM BRONZE ASTM B30

INSULATOR ROD - 3/4" EPOXY - FIBERGLASS

TORSION SPRING - RUBBER BUSHING

BOLTS, LOCKWASHERS & NUTS - STAINLESS STEEL

MECHANICAL RATINGS:

MIN. ULTIMATE STRENGTH (F): 2,000 LBS

BOLT SIZES	WRENCH/ SOCKET SIZES	TORQUE VALUES (FT-LBS)
3/8-18	9/16 HEX	20
5/8-11	15/16 HEX	95
3/4-10	1 1/8 HEX	125

WT: 14.4 LB

LOCATION

CONTRACT NO

CUST / CONTR

REVISIONS

REV	DESCRIPTION	DATE	BY	APR

DRN BY:
HV
DRN DATE:
3.8.13
CHK BY:
JL
CHK DATE:
3.8.13
PA 2017.359

FAFL DOSSERT®

TUNNEL SUPPORT ARM, ELASTIC, INSULATED

REV 0 PART NO:

TS-ARM-A01

1 OF 1