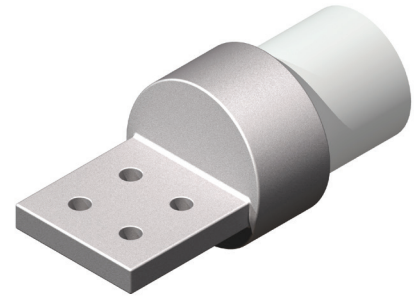


TYPE WTPC-N-AA

External Center Form Welded Terminal

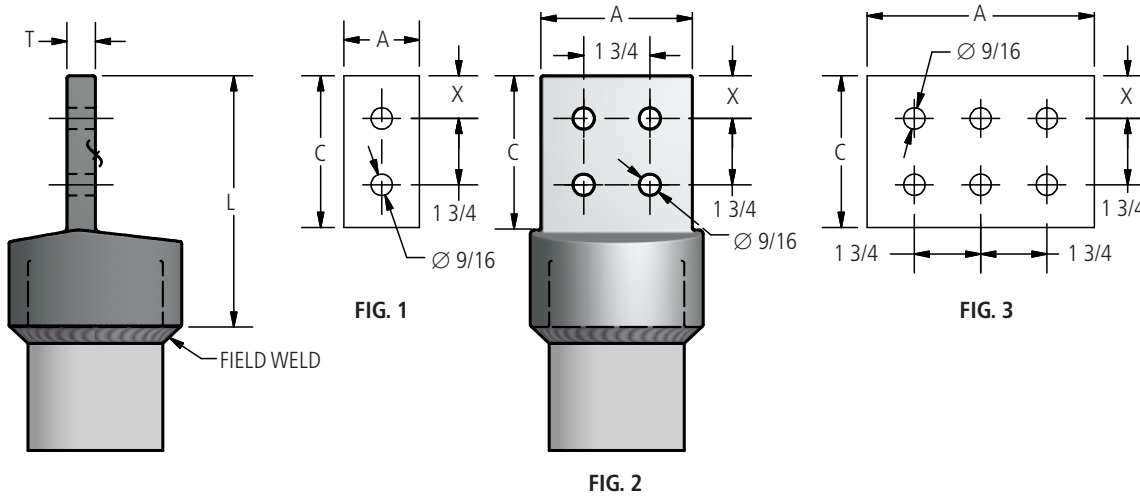
Material

Aluminum Alloy



Notes

- Add "U" for undrilled
- Add "F" for finished on both sides EX: WTPC75-2NF-AA



Ordering Information

| Catalog Number | Figure Number | SPS | Dimensions in Inches | | | | |
|----------------|---------------|-------|----------------------|-------|--------|-------|-------|
| | | | A | C | L | T | X |
| WTPC75-2N-AA | 1 | 3/4 | 2 | 3 | 4 5/8 | 3/8 | 5/8 |
| WTPC75-4N-AA | 2 | 3/4 | 3 | 3 | 4 5/8 | 3/8 | 5/8 |
| WTPC100-2N-AA | 1 | 1 | 2 | 3 | 5 | 3/8 | 5/8 |
| WTPC100-4N-AA | 2 | 1 | 3 | 3 | 5 | 3/8 | 5/8 |
| WTPC100-4N4-AA | 2 | 1 | 4 | 4 | 6 | 3/8 | 1 1/8 |
| WTPC125-2N-AA | 1 | 1 1/4 | 2 | 3 | 5 | 1/2 | 5/8 |
| WTPC125-4N4-AA | 2 | 1 1/4 | 4 | 4 | 6 | 1/2 | 1 1/8 |
| WTPC125-4N-AA | 2 | 1 1/4 | 3 | 3 | 5 | 1/2 | 5/8 |
| WTPC150-2N-AA | 1 | 1 1/2 | 2 | 3 | 5 | 5/8 | 5/8 |
| WTPC150-4N4-AA | 2 | 1 1/2 | 4 | 4 | 6 1/32 | 1/2 | 1 1/8 |
| WTPC150-4N-AA | 2 | 1 1/2 | 3 | 3 | 4 5/8 | 1/2 | 5/8 |
| WTPC200-2N-AA | 1 | 2 | 2 | 3 | 5 | 1/2 | 5/8 |
| WTPC200-4N4-AA | 2 | 2 | 4 | 4 | 6 | 1/2 | 1 1/8 |
| WTPC200-4N-AA | 2 | 2 | 3 | 3 | 5 | 1/2 | 5/8 |
| WTPC250-2N-AA | 1 | 2 1/2 | 3 | 3 | 5 | 5/8 | 5/8 |
| WTPC250-4N4-AA | 2 | 2 1/2 | 4 | 4 | 6 | 5/8 | 1 1/8 |
| WTPC250-4N-AA | 2 | 2 1/2 | 3 | 3 | 5 | 5/8 | 5/8 |
| WTPC300-2N-AA | 1 | 3 | 2 1/2 | 3 | 5 1/4 | 3/4 | 5/8 |
| WTPC300-4N4-AA | 2 | 3 | 4 | 4 | 6 5/8 | 3/4 | 1 1/8 |
| WTPC300-4N-AA | 2 | 3 | 3 | 3 | 5 1/4 | 3/4 | 5/8 |
| WTPC350-4N-AA | 2 | 3 1/2 | 3 | 3 | 5 5/8 | 3/4 | 5/8 |
| WTPC350-4N4-AA | 2 | 3 1/2 | 4 | 4 | 6 5/8 | 3/4 | 1 1/8 |
| WTPC400-2N-AA | 1 | 4 | 2 1/2 | 3 | 6 | 3/4 | 5/8 |
| WTPC400-4N4-AA | 2 | 4 | 4 | 4 | 7 | 7/8 | 1 1/8 |
| WTPC400-4N-AA | 2 | 4 | 3 | 3 | 6 | 3/4 | 5/8 |
| WTPC400-5N4-AA | 3 | 4 | 5 | 4 | 6 3/4 | 3/4 | 1 1/8 |
| WTPC400-6N4-AA | 3 | 4 | 6 | 4 1/2 | 7 1/2 | 7/8 | 1 1/8 |
| WTPC500-4N-AA | 2 | 5 | 3 | 3 1/2 | 6 7/8 | 3/4 | 5/8 |
| WTPC500-4N4-AA | 2 | 5 | 4 | 4 | 7 3/8 | 3/4 | 1 1/8 |
| WTPC500-5N4-AA | 3 | 5 | 5 | 4 | 7 3/8 | 7/8 | 1 1/8 |
| WTPC500-6N4-AA | 3 | 5 | 6 | 4 | 7 3/8 | 7/8 | 1 1/8 |
| WTPC600-4N4-AA | 2 | 6 | 4 | 4 | 7 7/8 | 1 | 1 1/8 |
| WTPC600-6N4-AA | 3 | 6 | 6 1/8 | 4 | 7 7/8 | 1 | 1 1/8 |
| WTPC800-4N4-AA | 2 | 8 | 4 | 4 | 7 7/8 | 1 1/4 | 1 1/8 |
| WTPC800-6N4-AA | 3 | 8 | 6 | 4 | 7 7/8 | 1 1/4 | 1 1/8 |

AFL's Dossier® product line offers a wide range of substation accessories in low voltage up to 765 kV applications in bronze or aluminum materials.