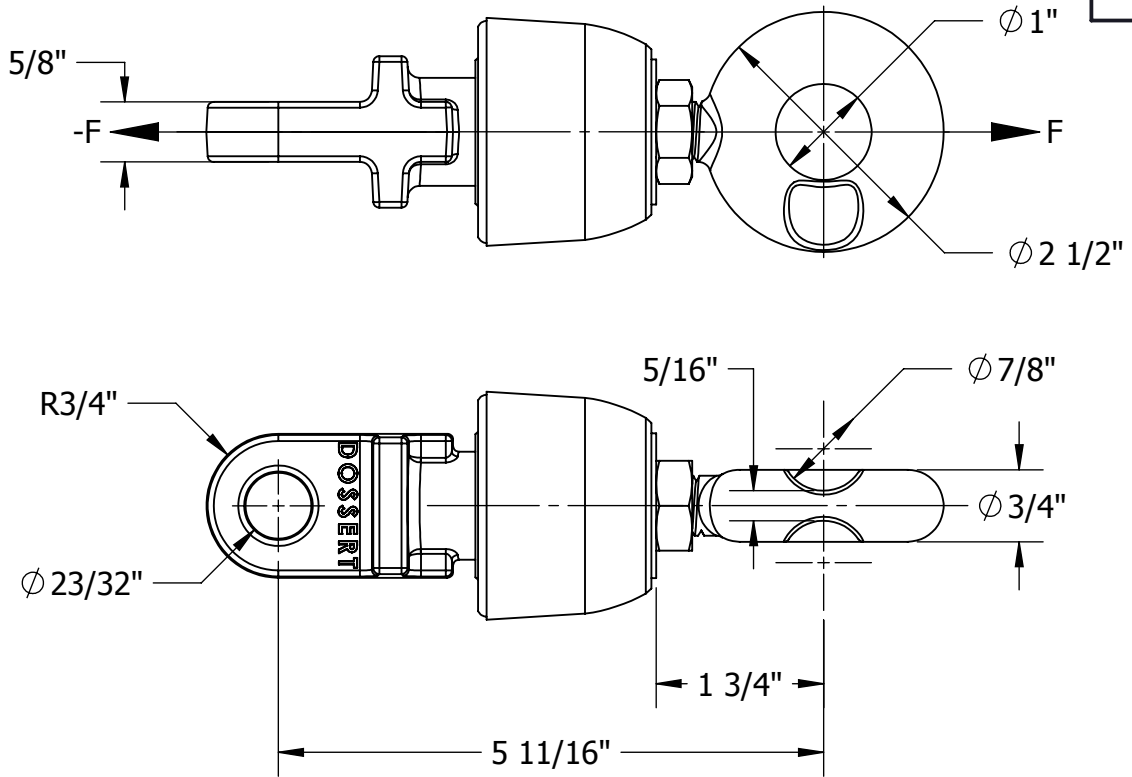


THIS DRAWING AND ALL INFORMATION ON IT IS THE PROPERTY OF AFL. IT IS CONFIDENTIAL AND IT IS GIVEN TO YOU FOR A LIMITED PURPOSE AND MUST BE RETURNED UPON REQUEST. NEITHER THIS DRAWING OR ANY PART OF IT NOR ANY INFORMATION CONCERNING IT MAY BE COPIED, EXHIBITED, OR FURNISHED TO OTHERS NOR PHOTOGRAPHS TAKEN OF ANY ARTICLE FABRICATED OR ASSEMBLED FROM THE DRAWING WITHOUT THE CONSENT OF AFL.

ITEM NO:

DWG. NO:



MATERIAL:

EYE & END - ALUMINUM ALLOY ASTM B26

JAM NUT - STAINLESS STEEL

INSULATOR - GLASS REINFORCED POLYESTER

MECHANICAL RATINGS:

MIN. ULTIMATE STRENGTH (F): 10,000 LBS

ELECTRICAL RATING:

VOLTAGE RATING: 750 VDC

LEAKAGE DISTANCE: 2.44 IN

DRY FLASHOVER: 25 kV

WET FLASHOVER: 15 kV (HORZ), 12 kV (VERT)

ULTIMATE PUNCTURE: 35 kV (TESTED IN OIL)

WT: 2.57 LB

LOCATION

CONTRACT NO

CUST / CONTR

REVISIONS

REV	DESCRIPTION	DATE	BY	APR

DRN BY:

HV

DRN DATE:

11.17.16

CHK BY:

GC

CHK DATE:

1/18/17

PA 2017.359.0

AFL

DOSSERT®

LINK, SINGLE RING, INSULATED, TONGUE-1 STDY
ARM, 90 DEG, AL

REV PART NO:

0

DEL90-INS-TFR-01

1 OF 1