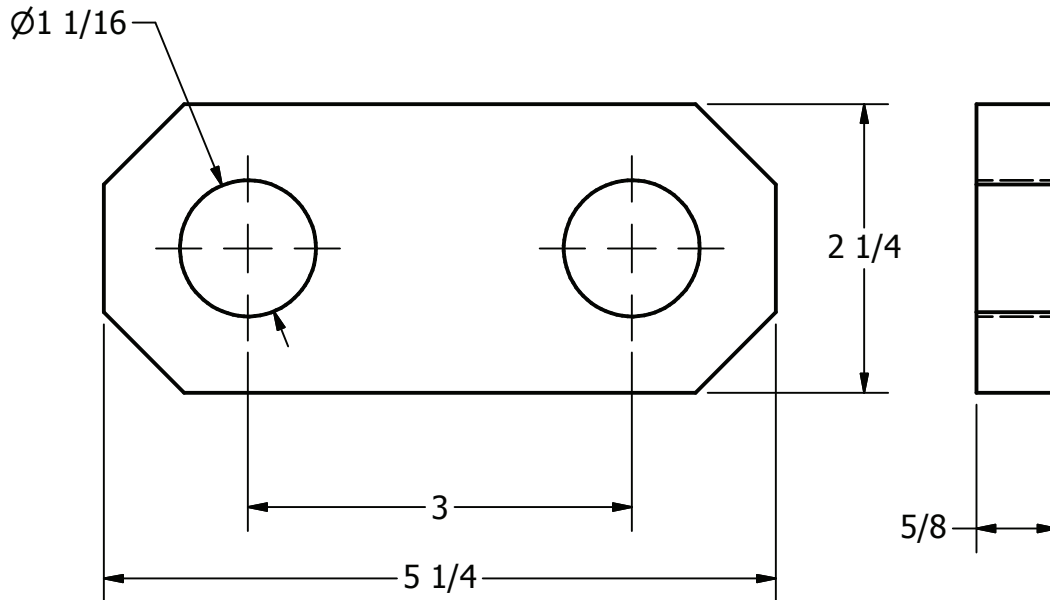


ITEM NO

DWG NO
A-7295



MATERIAL:
ALUMINUM BRONZE ASTM B30

NOTE:
2 PCS REQUIRED PER CONNECTOR

HARDWARE:
(2) 1" DIA. X 3-1/4" LG (2-3/4" ϕ TO ϕ) STEEL CLEVIS PIN
DWG-A-7933 HOT DIP. GALVANIZED TO ASTM A-123
(2) 5/32 X 2" LONG S. STEEL TYPE 302 HUMPBACK COTTER PIN.

1.85 LBS

THIS DRAWING AND ALL INFORMATION ON IT IS THE PROPERTY OF AFL. IT IS CONFIDENTIAL AND IT IS GIVEN TO YOU FOR A LIMITED PURPOSE AND MUST BE RETURNED UPON REQUEST. NEITHER THIS DRAWING OR ANY PART OF IT NOR ANY INFORMATION CONCERNING IT MAY BE COPIED, EXHIBITED, OR FURNISHED TO OTHERS NOR PHOTOGRAPHS TAKEN OF ANY ARTICLE FABRICATED OR ASSEMBLED FROM THE DRAWING WITHOUT THE CONSENT OF AFL.

REVISIONS					DRN BY:	CONTRACT NO		CUST / CONTR	
REV	DESCRIPTION	DATE	BY	APR	BB	 		LINK, FOR WEIGHT ROD	
4	RE-DRAWN IN INVENTOR	1-30-10	LK	EP	DRN DATE:				
					4-14-08	REV 4 DCLS100-100-3		1 OF 1	
					CHK BY:				
					BB				
					CHK DATE:				
					4-14-08				