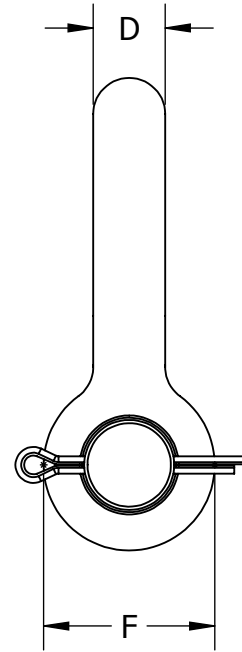
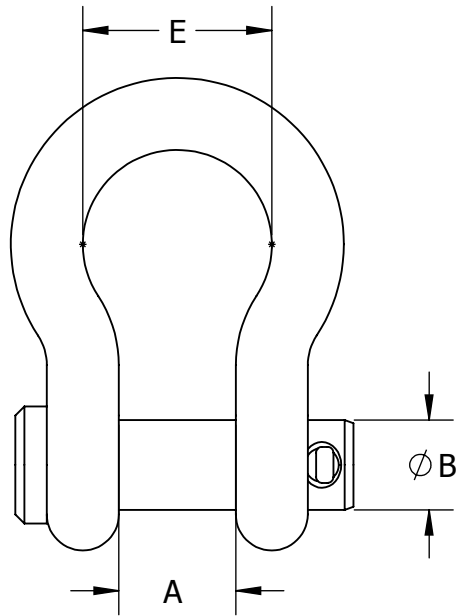


THIS DRAWING AND ALL INFORMATION ON IT IS THE PROPERTY OF AFL. IT IS CONFIDENTIAL AND IT IS GIVEN TO YOU FOR A LIMITED PURPOSE AND MUST BE RETURNED UPON REQUEST. NEITHER THIS DRAWING OR ANY PART OF IT NOR ANY INFORMATION CONCERNING IT MAY BE COPIED, EXHIBITED, OR FURNISHED TO OTHERS NOR PHOTOGRAPHS TAKEN OF ANY ARTICLE FABRICATED OR ASSEMBLED FROM THE DRAWING WITHOUT THE CONSENT OF AFL.

ITEM NO:

DWG. NO:




ITEM NO.	NOMINAL SIZE	PART NO.	MIN. ULTIMATE STRENGTH (LBS)	WEIGHT (LBS)	DIMENSIONS IN INCHES				
					A	B	D	E	F
	3/16	SHP211-055	4,000	0.08	0.38	0.25	0.19	0.60	0.56
	1/4	SHP211-109	6,000	0.13	0.47	0.31	0.25	0.78	0.61
	5/16	SHP211-154	9,000	0.18	0.53	0.38	0.31	0.84	0.75
	3/8	SHP211-208	12,000	0.29	0.66	0.44	0.38	1.03	0.91
	7/16	SHP211-253	18,000	0.38	0.75	0.50	0.44	1.16	1.06
	1/2	SHP211-307	24,000	0.71	0.81	0.63	0.50	1.31	1.19
	5/8	SHP211-352	39,000	1.50	1.06	0.75	0.63	1.69	1.50
	3/4	SHP211-406	57,000	2.32	1.25	0.88	0.75	2.00	1.81
	7/8	SHP211-451	78,000	3.49	1.44	1.00	0.88	2.28	2.09
	1	SHP211-505	102,000	5.00	1.69	1.13	1.00	2.69	2.38
	1 1/8	SHP211-550	114,000	6.97	1.81	1.25	1.13	2.91	2.69
	1 1/4	SHP211-604	144,000	9.75	2.03	1.38	1.29	3.25	3.00
	1 3/8	SHP211-659	162,000	13.25	2.25	1.50	1.42	3.63	3.31
	1 1/2	SHP211-703	204,000	17.25	2.38	1.63	1.54	3.88	3.63

MATERIAL:
 FORGED STEEL, ASTM A668, H.D.G* ASTM A153
 CLEVIS PIN - STEEL, H.D.G*
 COTTER PIN - STAINLESS STEEL

* = HOT DIP GALVANIZED

LOCATION	CONTRACT NO	CUST / CONTR
----------	-------------	--------------

REVISIONS					DRN BY: BR
REV	DESCRIPTION	DATE	BY	APR	
					DRN DATE: 8.1.17
					CHK BY: GC
					CHK DATE: 8.1.17
					PA 2015.231.0

	
<p>SHACKLE, ANCHOR, PIN TYPE</p>	
REV 0	PART NO: SHP211-SERIES
1 OF 1	