

DOSSERT® TYPE CI-AA SERIES

'Drive Fit' End Plug

'Drive fit' end plugs are designed to be forced into end of bus tube. End plug reduces electrostatic losses, seals out moisture and prevents birds from nesting in tube ends.

Material

Aluminum Alloy

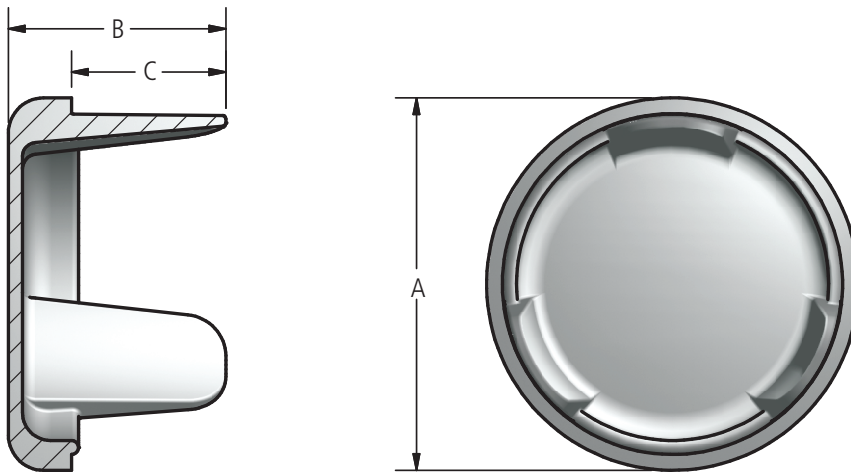
Ordering Instructions

Step 1: Determine Catalog Number based on the bus conductor being used.

Example: End Plug for 4" schedule 40 bus pipe, the complete catalog number is: CI400-AA.



230 kV Aluminum
Bolted Corona Belts



Ordering Information

CATALOG NUMBER		CONDUCTOR SIZE	DIMENSIONS IN INCHES		
SCH40	SCH80	SPS/EHPS	A	B	C
CI75-AA	CI75E-AA	3/4	1.1	.9	0.50
CI100-AA	CI100E-AA	1	1.3	1.0	0.56
CI125-AA	CI125E-AA	1 1/4	1.7	1.0	0.63
CI150-AA	CI150E-AA	1 1/2	1.9	1.0	0.60
CI200-AA	CI200E-AA	2	2.4	1.3	0.90
CI250-AA	CI250E-AA	2 1/2	2.9	1.6	1.10
CI300-AA	CI300E-AA	3	3.5	1.8	1.10
CI350-AA	CI350E-AA	3 1/2	4.0	2.4	1.60
CI400-AA	CI400E-AA	4	4.5	2.9	2.00
CI500-AA	CI500E-AA	5	5.6	3.4	2.40
CI600-AA	CI600E-AA	6	6.6	3.9	2.80
CI600R-AA		6 OD	6.0	3.5	2.50
CI800-AA	CI800E-AA	8	8.6	4.0	3.00
CI800R-AA		8 OD	8.0	4.0	3.00

DOSSERT®

TYPE 16200 Internal Bolted End Plug

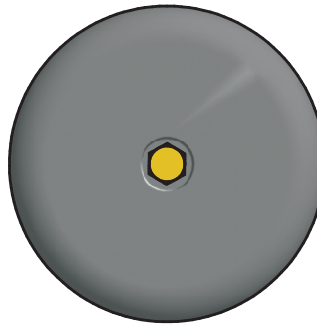
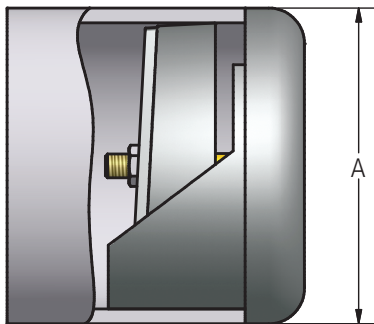
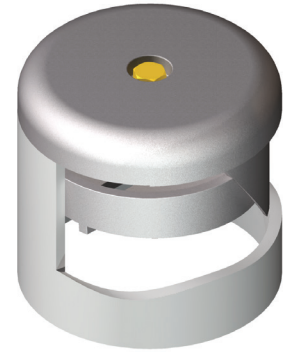
Bolted end plug is designed to wedge on inside of bus tube. End plugs reduce electrostatic losses, seal out moisture and prevent birds from nesting in tube ends. Bolted end plugs can be easily removed for modifications or future expansions.

Material

Aluminum Alloy

Hardware

Yellow anodized aluminum bolts, nuts, and lockwashers.



Ordering Information

CATALOG NUMBER		CONDUCTOR SIZE	DIMENSIONS IN INCHES	BOLT SIZE	NOMINAL WEIGHT LBS
SCH40	SCH80	SPS & EHPS	A		
16204	16224	1-1/4	1.66	1/4	0.25
16205	16225	1-1/2	1.90	1/4	0.37
16206	16226	2	2.38	1/4	0.45
16207	16227	2-1/2	2.88	3/8	0.64
16208	16228	3	3.50	3/8	0.86
16209	16229	3-1/2	4.00	3/8	0.98
16210	16230	4	4.50	3/8	1.90
16212	16232	5	5.56	3/8	2.30
16213	16233	6	6.62	1/2	4.50

DOSSERT® TYPE CX-AA

Aluminum Corona Bell For Tubular Bus

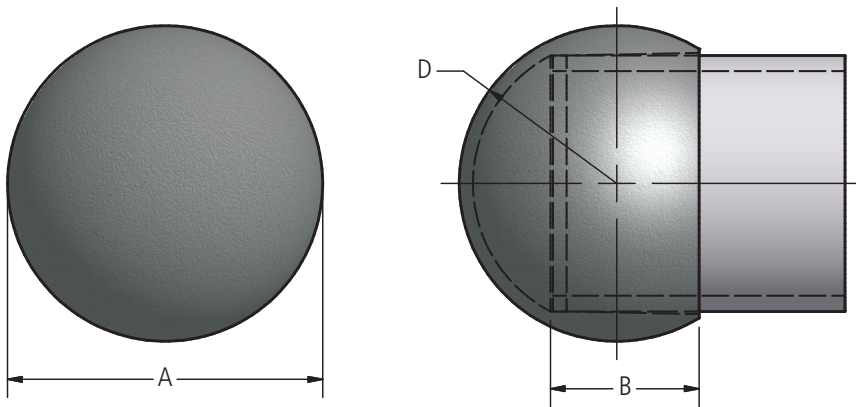
Corona Bell for sealing the exposed ends of standard pipe size tubular buses. Prevents rain and undue condensation from accumulating inside the bus. The smooth rounded surfaces reduce electrostatic discharge thereby aiding in the reduction of power transmission losses.

Material

Aluminum Alloy



230 kV Aluminum Bolted Corona Bells



Ordering Information

CATALOG NUMBER	SPS	DIMENSIONS IN INCHES		
		A	B	D
CX50-AA	1/2	1 1/8	3/4	9/16
CX75-AA	3/4	1 3/8	7/8	11/16
CX100-AA	1	1 3/4	1 1/8	7/8
CX125-AA	1 1/4	2 1/8	1 1/8	1 1/16
CX150-AA	1 1/2	2 9/16	1 3/8	1 9/32
CX200-AA	2	3 1/8	1 1/2	1 9/16
CX250-AA	2 1/2	3 5/8	1 5/8	1 13/16
CX300-AA	3	4 5/16	1 7/8	2 5/32
CX350-AA	3 1/2	5	2 1/4	2 1/2
CX400-AA	4	5 1/2	2 1/2	2 3/4
CX450-AA	4 1/2	5 5/8	2 3/4	2 13/16
CX500-AA	5	6 3/4	3	3 3/8
CX600-AA	6	6 7/8	3 1/4	3 15/16