

DOSSERT®

TYPE PSV Vertical Pipe Bus Support

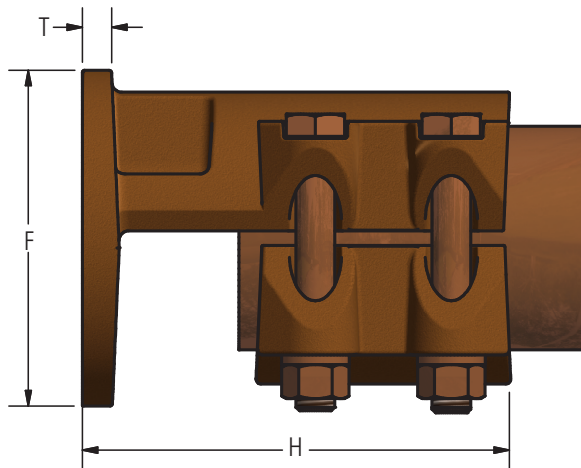
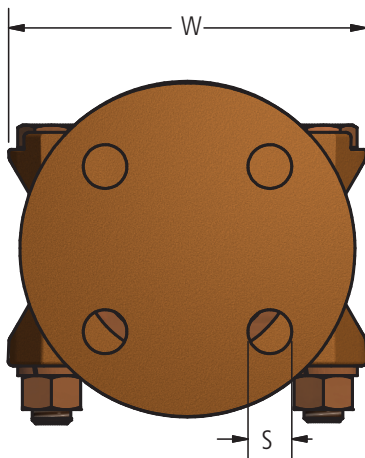
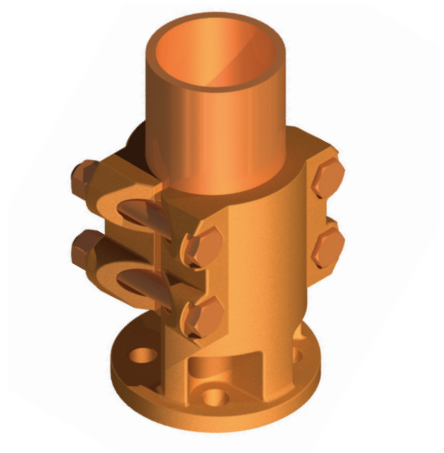
A right angle bus support clamp for mounting the bus vertically on an insulator. Can be readily supplied for either 3 inch or 5 inch bolt circle for cap or base mounting.

Material

Copper Alloy

Hardware

Everdur bolts, nuts and lockwashers
Mounting hardware galvanized steel



Ordering Information

CATALOG NUMBER	SPS	BOLT CIRCLE	DIMENSIONS IN INCHES					CANTILEVER FORCE LBS	
			F	H	S	T	W	ALLOWABLE	ULTIMATE
PSV100-3	1	3	4 1/4	4 3/8	9/16	3/8	3 1/8	1920	2750
PSV150-3	1 1/2	3	4 1/4	4 3/4	9/16	3/8	3 11/16	2000	2880
PSV150-5	1 1/2	5	6 1/4	4 3/4	11/16	3/8	3 11/16	4130	5950
PSV200-3	2	3	4 1/4	5 1/2	9/16	3/8	4 1/8	2080	2990
PSV200-5	2	5	6 1/4	4 3/4	11/16	3/8	4 1/8	4430	6380
PSV250-3	2 1/2	3	4 1/4	5 1/2	9/16	13/32	4 5/8	2160	3110
PSV250-5	2 1/2	5	6 1/4	4 3/4	11/16	13/32	4 5/8	4590	6610
PSV300-3	3	3	4 1/4	5 5/16	9/16	13/32	5 5/8	2240	3230
PSV300-5	3	5	6 1/4	5 5/16	11/16	13/32	5 5/8	4870	7010
PSV350-3	3 1/2	3	4 1/4	4 7/8	9/16	13/32	6 1/8	2720	3920
PSV350-5	3 1/2	5	6 1/4	5 1/2	11/16	13/32	6 1/8	5030	7240
PSV400-3	4	3	4 1/4	4 7/8	9/16	13/32	6 5/8	2820	4060
PSV400-5	4	5	6 1/4	4 7/8	11/16	3/8	6 5/8	5350	7700