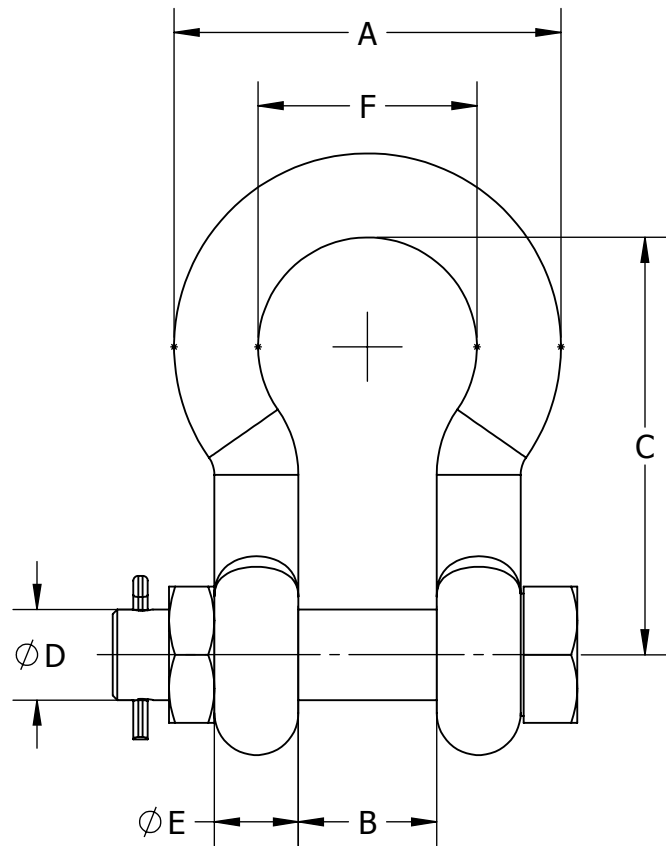


DWG. NO:




ITEM NO.	PART NO.	DIMENSIONS IN INCHES						MIN. ULTIMATE LOAD (LBS)
		A	B	C	D	E	F	
	G-2130-1/2	2 5/16	13/16	2 25/32	5/8-11	1/2	1 5/16	24,000
	G-2140A-5/8	2 15/16	1 1/16	3 9/16	3/4-10	5/8	1 11/16	49,500
	G-2140A-7/8	4 1/32	1 7/16	5 13/16	1-8	7/8	2 9/32	94,050
	G-2130A-1 1/4	5 3/4	2 1/32	5 3/8	1 3/8-6	1 1/4	3 1/4	96,000

**MATERIAL:**

BODY, NUT & BOLT - STEEL, H.D.G.\*  
COTTER PIN - STAINLESS STEEL

\* = HOT DIP GALVANIZED

LOCATION					CONTRACT NO		CUST / CONTR																					
<div>REVISIONS</div> <table><thead><tr><th>DESCRIPTION</th><th>DATE</th><th>BY</th><th>APR</th></tr></thead><tbody><tr><td></td><td></td><td></td><td></td></tr><tr><td></td><td></td><td></td><td></td></tr><tr><td></td><td></td><td></td><td></td></tr><tr><td></td><td></td><td></td><td></td></tr></tbody></table>					DESCRIPTION	DATE	BY	APR																	DRN BY: RW		<div><div><div></div><div><i>DOSSERT®</i></div></div></div>	
					DESCRIPTION	DATE	BY	APR																				
DRN DATE: 07/24/17																												
CHK BY: GC		SHACKLE, ANCHOR, BOLT, FORGED																										
CHK DATE: 07/24/17																												
PA 2015-231.0																												
REV 0		PART NO: G-2130 + G-2140A-SERIES		1 OF 1																								

THIS DRAWING AND ALL INFORMATION ON IT IS THE PROPERTY OF AFL. IT IS CONFIDENTIAL AND IT IS GIVEN TO YOU FOR A LIMITED PURPOSE AND MUST BE RETURNED UPON REQUEST. NEITHER THIS DRAWING OR ANY PART OF IT NOR ANY INFORMATION CONCERNING IT MAY BE COPIED, EXHIBITED, OR FURNISHED TO OTHERS NOR PHOTOGRAPHS TAKEN OF ANY ARTICLE FABRICATED OR ASSEMBLED FROM THE DRAWING WITHOUT THE CONSENT OF AFL.