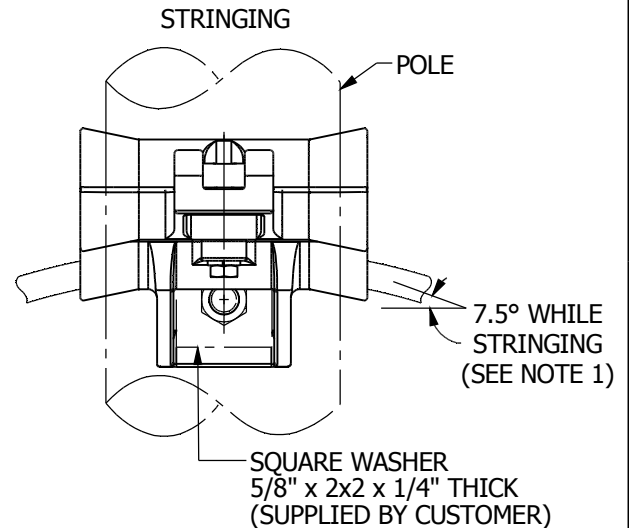
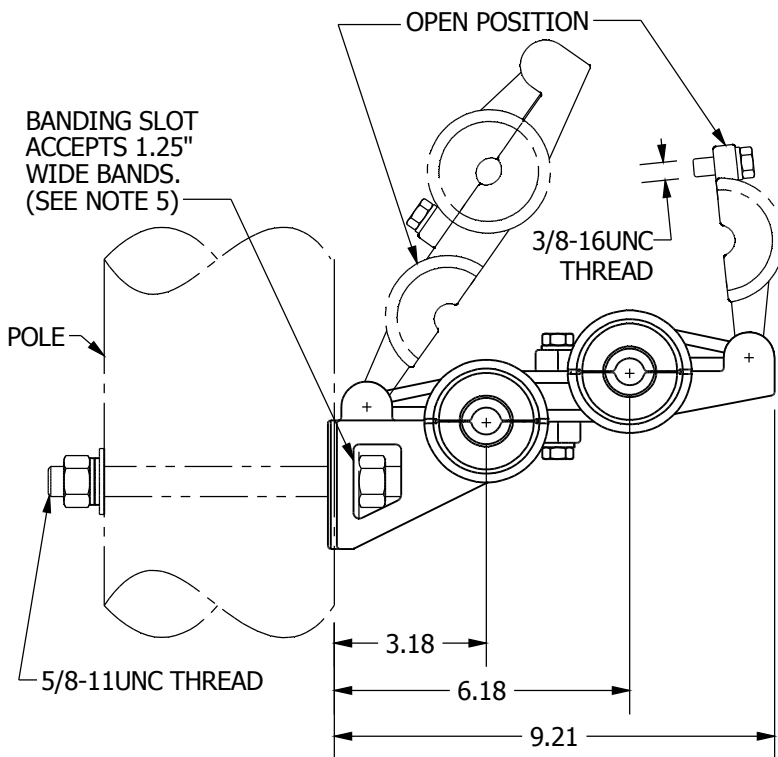
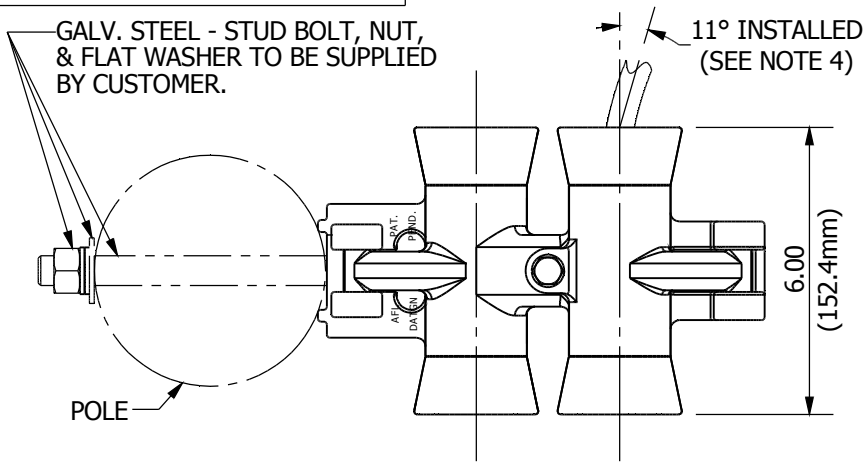


# L12151-1

SHEET 1 OF 2



**NOTES:**

1. SUPPORT MAY BE USED AS A STRINGING DEVICE BY REMOVING BUSHING INSERTS. MAXIMUM LINE ANGLE FOR STRINGING IS 15° (7.5° PER SIDE). AMOUNT OF STRUCTURES MUST NOT EXCEED 30.
2. HARDWARE IS HIGH STRENGTH ALUMINUM.
3. RECOMMENDED TORQUE:  
3/8" BOLT - 15 lbf-ft. (20.3 N-m)
4. MAXIMUM - LINE ANGLE INSTALLED (HORIZONTAL PLANE): 22° (11° PER SIDE)  
MAXIMUM - SAG ANGLE INSTALLED (VERTICAL PLANE): 22° (11° PER SIDE)
5. STAINLESS STEEL BANDING TO BE SUPPLIED BY CUSTOMER.
6. ASSEMBLY IS NOT TO BE USED IN SYSTEMS WITH LINE VOLTAGES GREATER THAN 69KV.
7. ASSEMBLY IS NOT FOR USE WITH SPECIAL TRACKING - RESISTANT JACKETS.
8. SEE SHEET 2 FOR ORDERING INFORMATION.



ADSS TANGENT SUPPORT DOUBLE TRUNNION

SUSPENSION CLAMP

FOR ADSS CABLE

SALES PRESENTATION

SEE SHEET 2 FOR REVISIONS

DATE	NO.	REVISION RECORD	PA	DR.	CK.
THIS DRAWING AND ALL INFORMATION ON IT IS THE PROPERTY OF AFL. IT IS CONFIDENTIAL AND IT IS GIVEN TO YOU FOR A LIMITED PURPOSE AND MUST BE RETURNED UPON REQUEST. NEITHER THIS DRAWING OR ANY PART OF IT NOR ANY INFORMATION CONCERNING IT MAY BE COPIED, EXHIBITED, OR FURNISHED TO OTHERS NOR PHOTOGRAPHS TAKEN OF ANY ARTICLE FABRICATED OR ASSEMBLED FROM THE DRAWING WITHOUT THE CONSENT OF AFL.					

DESIGN	S. KRANZ	DRAWN	C. BACK	CHECK	S. KRANZ
SCALE	N.T.S.	DATE	08/11/16	APPR	S. KRANZ
L12151-1		SHEET	1/2	REVISION	2
		PA	PA2016-183		
		ARN			

SUPERSEDES: SUPERSEDED BY:

BUSHING "A" NUMBER	BUSHING "B" NUMBER	CABLE DIAMETER RANGE		COLOR CODE	MAXIMUM SPAN CAPABILITIES USING NESC LOADS IN FEET/METERS	ESTIMATED WEIGHT	
		INCHES	MM			LBS.	KG
420	420	.420-.474	10.67-12.04	BLACK	600/182.9	3.99	1.810
475	475	.475-.525	12.07-13.34	BLUE	600/182.9	3.99	1.810
526	526	.526-.575	13.36-14.61	ORANGE	600/182.9	3.99	1.810
576	576	.576-.625	14.63-15.88	BROWN	600/182.9	3.98	1.805
626	626	.626-.675	15.90-17.15	GREEN	600/182.9	3.98	1.805
676	676	.676-.725	17.17-18.42	WHITE	600/182.9	3.97	1.801
726	726	.726-.775	18.44-19.69	RED	600/182.9	3.97	1.801
776	776	.776-.825	19.71-20.96	PURPLE	600/182.9	3.96	1.796
826	826	.826-.875	20.98-22.23	YELLOW	600/182.9	3.96	1.796
876	876	.876-.925	22.25-23.50	PINK	500/152.4	3.96	1.796
926	926	.926-.959	23.52-24.36	BLUE+WHITE	CONTACT AFL	3.96	1.796
960	960	.960-1.045	24.38-26.54	GRAY	CONTACT AFL	3.96	1.796

**NOTES:**

- BUSHING "A" AND "B" MAY BE THE SAME OR DIFFERENT.

**ORDERING INFORMATION**

CUSTOMER TO ORDER BY ASSEMBLING PART NUMBER AS SHOWN:

**DATGN\_\_A\_\_B**


BUSHING  BUSHING  
"A" NUMBER "B" NUMBER

REFERENCE TABLE ABOVE

SEE NOTE 1

**EXAMPLE:**

FIRST CABLE 0.500" OD → BUSHING "A" NUMBER = 475  
 SECOND CABLE 0.750" OD → BUSHING "B" NUMBER = 726  
 ORDER BY PART NUMBER: DATGN**475A726B**

												
					ADSS TANGENT SUPPORT DOUBLE TRUNNION							
					SUSPENSION CLAMP							
					FOR ADSS CABLE							
12/20/19	2	UPDATED TABLE MAX. SPAN UNITS TEXT	PA2016-183.3	CB	BS							
09/26/16	1	UPDATED WEIGHTS.	PA2016-183.1	CB	SK							
DATE	NO.	REVISION RECORD	PA	DR.	CK.							
THIS DRAWING AND ALL INFORMATION ON IT IS THE PROPERTY OF AFL. IT IS CONFIDENTIAL AND IT IS GIVEN TO YOU FOR A LIMITED PURPOSE AND MUST BE RETURNED UPON REQUEST. NEITHER THIS DRAWING OR ANY PART OF IT NOR ANY INFORMATION CONCERNING IT MAY BE COPIED, EXHIBITED, OR FURNISHED TO OTHERS NOR PHOTOGRAPHS TAKEN OF ANY ARTICLE FABRICATED OR ASSEMBLED FROM THE DRAWING WITHOUT THE CONSENT OF AFL.					DESIGN	S. KRANZ	DRAWN	C. BACK	CHECK	S. KRANZ		
					SCALE	N.T.S.	DATE	08/11/16	APPR	S. KRANZ		
					<b>L12151-2</b>			SHEET	<b>2/2</b>	REVISION	<b>2</b>	PA
SUPERSEDES:					SUPERSEDED BY:							