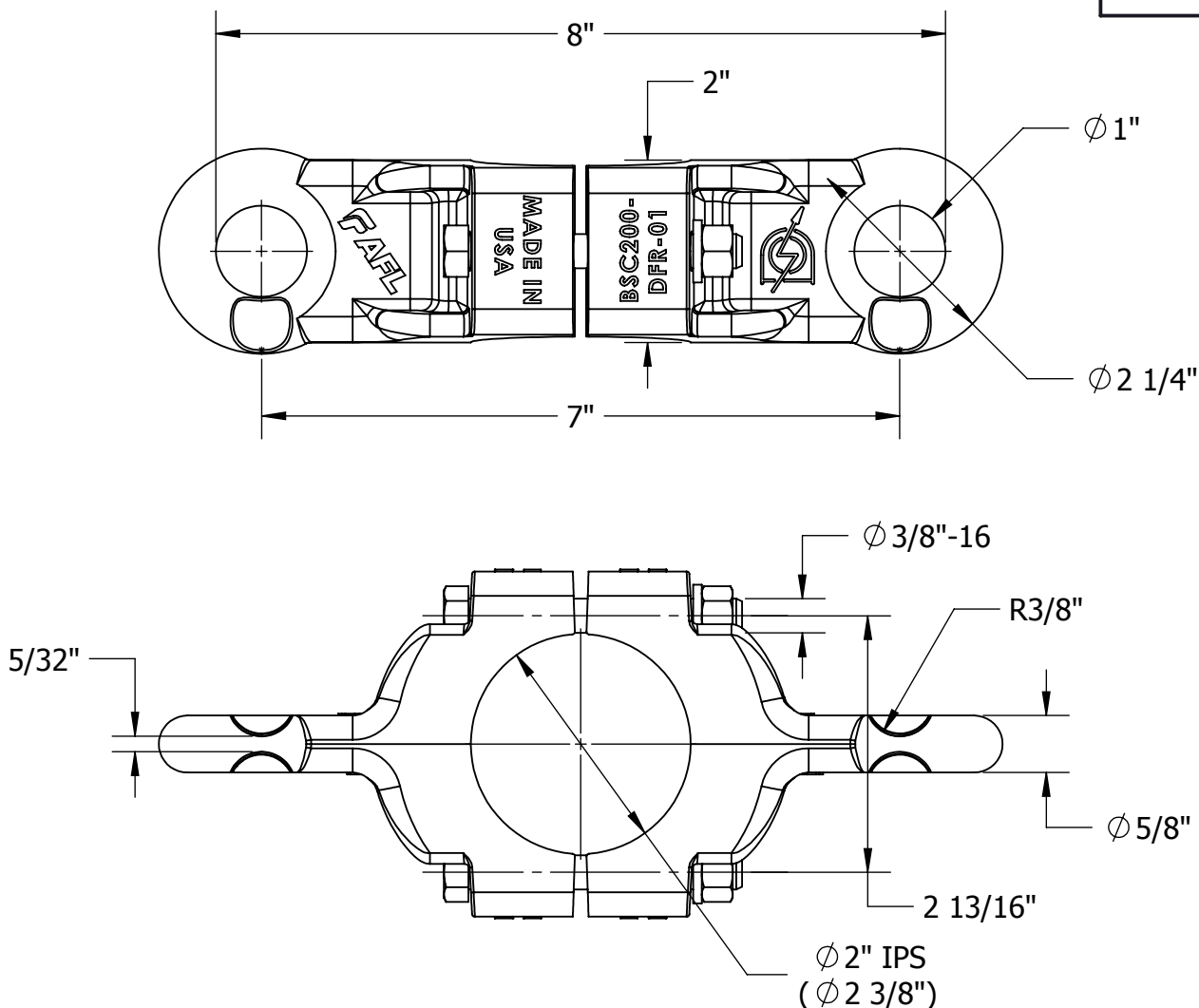


THIS DRAWING AND ALL INFORMATION ON IT IS THE PROPERTY OF AFL. IT IS CONFIDENTIAL AND IT IS GIVEN TO YOU FOR A LIMITED PURPOSE AND MUST BE RETURNED UPON REQUEST. NEITHER THIS DRAWING OR ANY PART OF IT NOR ANY INFORMATION CONCERNING IT MAY BE COPIED, EXHIBITED, OR FURNISHED TO OTHERS NOR PHOTOGRAPHS TAKEN OF ANY ARTICLE FABRICATED OR ASSEMBLED FROM THE DRAWING WITHOUT THE CONSENT OF AFL.

ITEM NO:



DWG. NO:



MATERIAL:
ALUMINUM ALLOY ASTM B26
NUTS - SILICON BRONZE
BOLTS & LOCKWASHERS - STAINLESS STEEL

BOLT SIZES	WRENCH/ SOCKET SIZES	TORQUE VALUES (FT-LBS)
3/8-16	9/16 HEX	21

WT: 1.91 LB

THIS DRAWING ASSUMES	LOCATION					CONTRACT NO		CUST / CONTR																																																			
	<div>REVISIONS</div> <table><thead><tr><th>REV</th><th>DESCRIPTION</th><th>DATE</th><th>BY</th><th>APR</th></tr></thead><tbody><tr><td></td><td></td><td></td><td></td><td></td></tr><tr><td></td><td></td><td></td><td></td><td></td></tr><tr><td></td><td></td><td></td><td></td><td></td></tr><tr><td></td><td></td><td></td><td></td><td></td></tr><tr><td></td><td></td><td></td><td></td><td></td></tr><tr><td></td><td></td><td></td><td></td><td></td></tr><tr><td></td><td></td><td></td><td></td><td></td></tr><tr><td></td><td></td><td></td><td></td><td></td></tr><tr><td></td><td></td><td></td><td></td><td></td></tr></tbody></table>					REV	DESCRIPTION	DATE	BY	APR																																														DRN BY: KR		<div> </div> <div>CLAMP, PIPE, FR LINK, 2" IPS, BACK - BACK, AL</div>	
						REV	DESCRIPTION	DATE	BY	APR																																																	
DRN DATE: 9.1.17																																																											
CHK BY: GC																																																											
CHK DATE: 9.13.17																																																											
PA 2017.270.0																																																											

 REV | PART NO: | BSC200-2DFR-01 | 1 OF 1 |