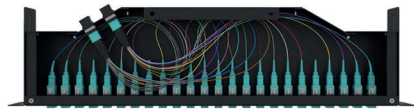


## UltraSlim 1RU Panel BASE-12, 96 Fiber



The UltraSlim 1RU Panels provide secure transitions between MPO and LC or SC discrete connector interfaces. They are used to interface MPO backbones with LC or SC patching and active equipment connections.

The pre-populated panel allows rapid deployment of high-density data center infrastructure as well as improved troubleshooting and reconfiguration during moves, adds and changes. The shallow depth of the UltraSlim Panel makes it suitable for copper racking systems.

The MPO UltraSlim Panels contain factory-controlled and tested MPO-LC/SC fanouts to deliver optical performance and reliability. Low loss MPO Premium and LC/SC Premium versions are offered featuring significantly improved low insertion losses for demanding low power budget, high-speed networks.

### Features

- Available in OS1, OS2 and OM4 fiber types
- Up to 8 MPO standard connectors
- Multi-fiber connector rear entry ports
- Front LC (SFF Data Center standard), SC discrete interface
- Up to 96 fibers
- Factory-terminated and tested
- 19" rack mount
- Rapid deployment, factory-terminated modular system saves installation and reconfiguration time during moves, adds and changes
- Easy-open installation rear entry MPO ports guarantee easy cabling access and facilitates connection to MPO backbone trunk systems
- Compact 1RU size, 11.7 cm depth, saves space and makes the panel compatible with copper racking system
- MTP/MPO interface MPO components feature superior optical and mechanical properties
- Optimized Performance Low loss MPO Elite, discrete premium connectors and OM4 fiber assures low insertion losses and power penalties in tight power budget, high-speed network environments.
- High-density 1RU panel scales up to 96 discrete LC connectors and up to 8 MPO rear interfaces
- Reliability – 100% tested – Combination of high-quality components and manufacturing quality control for product with the highest standards

### Applications

- Data Communication Applications
- Data Center Infrastructure
- Storage Area Network – Fiber Channel
- Emerging 40 and 100 Gbps Protocols

## UltraSlim 1RU Panel BASE-12 with 96 Fibers

### Ordering Information

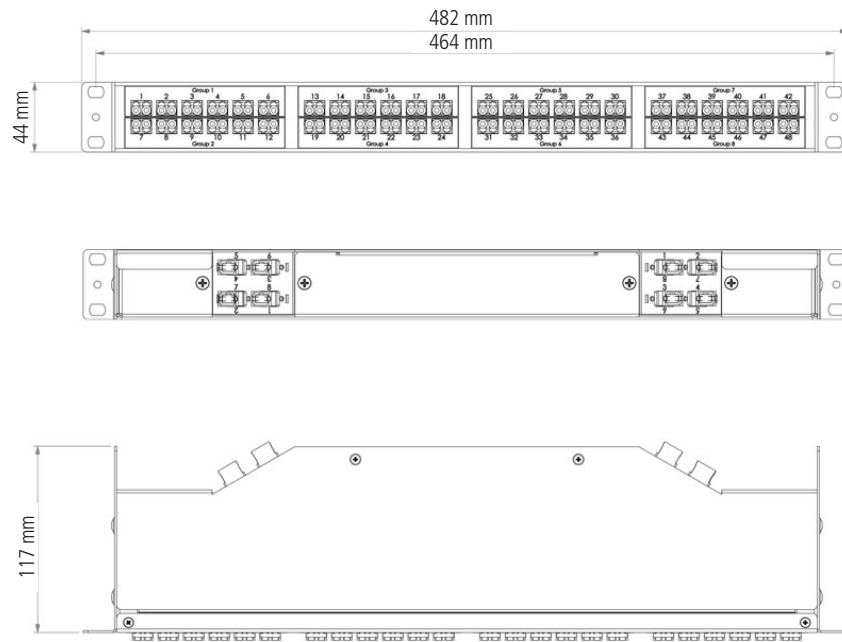
	FRONT CONNECTOR	REAR MPO/MTP CONNECTOR	FIBER TYPE	FIBER COUNT	POLARITY
US	LCD	MPM	OM4	96*	
	SCS	MM	OM1	84*	B1
	LCAD		09	72*	B2
	SCAD			60*	
				48	
				36	
				24	
				12	

\* For LC Connectors

\*\* MTP US Conec MPO Connectors available on request. Add suffix "-US" to the end of part number.

**Example:** US-LCD-MPM-OM4-96 is an UltraSlim 96 Fibers, MM OM4, MPO Prem(M)-LC Prem, 19", Black Polarity A/C

### Technical Drawings



## UltraSlim 1RU Panel BASE-12 with 96 Fibers

### Specifications

PARAMETER	VALUE
Fiber Types	OS1/OS2, OM3, OM4 (ISO/IEC 60793)
Adapters	MPO (IEC-61754-7 & EIA/TIA-604-5) Body Color: Black Polarity: Keyway up-Keyway down Body Color: Grey Polarity: Keyway up-Keyway up LC Duplex, SC Simplex, SC Duplex Body Color: Beige (MM), Aqua (MM), Blue (SM/UPC), Green (SM/APC)
Connectors	MPO (IEC-61754-7 & EIA/TIA-604-5) Boot Color: Black Body Sleeve Color: MM (Beige), MM Premium (Aqua), SM (Green), SM Premium (Yellow) LC (IEC 61754-20), SC (61754-4) Boot Color: White (MM and SM/UPC), Green (SM /APC) Housing Color: Beige (MM), Blue (SM), Green (SM/APC)

### Optical Performance

CONNECTOR MATING	INSERTION LOSS (IL) AVERAGE	IL MAX	RETURN LOSS
MPO Premium (MM)	0.10 dB	0.35 dB	N/A
MPO (MM)	0.20 dB	0.60 dB	N/A
LC, SC Premium (MM)	0.08 dB	0.15 dB	N/A
LC, SC (MM)	0.15 dB	0.30 dB	N/A
MPO Premium (SM)	0.10 dB	0.35 dB	>60 dB
MPO (SM)	0.25 dB	0.75 dB	>60 dB
LC, SC Premium (MM)	0.12 dB	0.15 dB	>55/65 dB*
LC, SC (SM)	0.18 dB	0.30 dB	>55/65 dB*

\*UPC/APC

### Qualifications

GOVERNING BODY	STANDARD CODES	COMPONENT
IEC	61754-7 61754-7 61754-4	MPO Adapters and MPO Connectors LC Connectors SC Connectors
EIA/TIA	604-5	MPO Adapters and MPO Connectors

### Temperature Specifications

TEMPERATURE RANGE	
OPERATING	-20°C to +60°C
STORAGE	-40°C to +70°C