

DOSSERT®

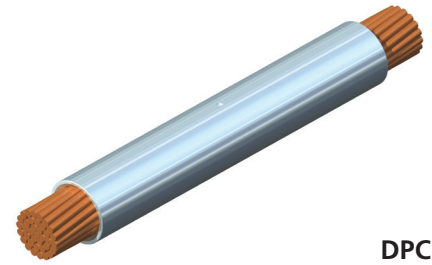
TYPE DPC-T

Copper Compression Coupler For Cable

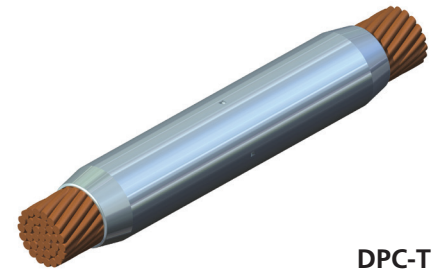
A seamless sleeve coupler for splicing two cables end to end. This coupler is designed to fit the assembling dies of all standard hydraulic presses. Installation is quickly effected by slipping the connector over the free cable ends and forming indentations.

Material

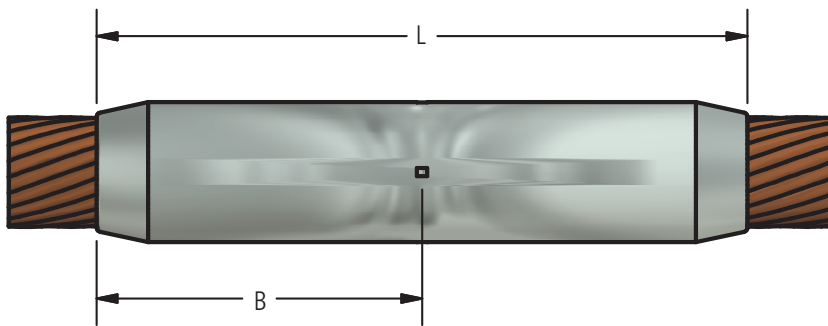
Tin plated copper alloy



DPC



DPC-T



Ordering Information

CATALOG NUMBER		CABLE SIZE	DIMENSIONS IN INCHES	
STANDARD	TAPERED		B	L
DPC2	DPC2-T	6 Str.	1 1/8	2 5/16
DPC4	DPC4-T	4 Str.	1 1/8	2 5/16
DPC5	DPC5-T	3 Str.	1 1/4	2 5/8
DPC6	DPC6-T	2 Str.	1 1/4	2 5/8
DPC8	DPC8-T	1 Str.	1 7/16	3
DPC10	DPC10-T	1/0 Str.	1 7/16	3
DPC13	DPC13-T	2/0 Str.	1 1/2	3 1/8
DPC17	DPC17-T	3/0 Str.	1 1/2	3 1/8
DPC21	DPC21-T	4/0 Str.	1 5/8	3 3/8
DPC25	DPC25-T	250 MCM	1 5/8	3 3/8
DPC30	DPC30-T	300 MCM	2 1/16	4 1/4
DPC35	DPC35-T	350 MCM	2 1/16	4 1/4
DPC40	DPC40-T	400 MCM	2 1/8	4 3/8
DPC45	DPC45-T	450 MCM	2 1/8	4 3/8
DPC50	DPC50-T	500 MCM	2 1/4	4 5/8
DPC55	DPC55-T	550 MCM	2 5/8	5 3/8
DPC60	DPC60-T	600 MCM	2 11/16	5 1/2
DPC65	DPC65-T	650 MCM	2 13/16	5 3/4
DPC75	DPC75-T	750 MCM	2 7/8	5 7/8
DPC80	DPC80-T	800 MCM	2 15/16	6
DPC85	DPC85-T	850 MCM	2 15/16	6
DPC100	DPC100-T	1000 MCM	3	6 1/8
DPC125	DPC125-T	1250 MCM	3 1/4	6 5/8
DPC130	DPC130-T	1300 MCM	3 1/4	6 5/8
DPC150	DPC150-T	1500 MCM	3 1/4	6 5/8
DPC175	DPC175-T	1750 MCM	3 1/2	7 1/8
DPC200	DPC200-T	2000 MCM	3 1/2	7 1/8

For information on installation tools refer to pages 246 and 247.