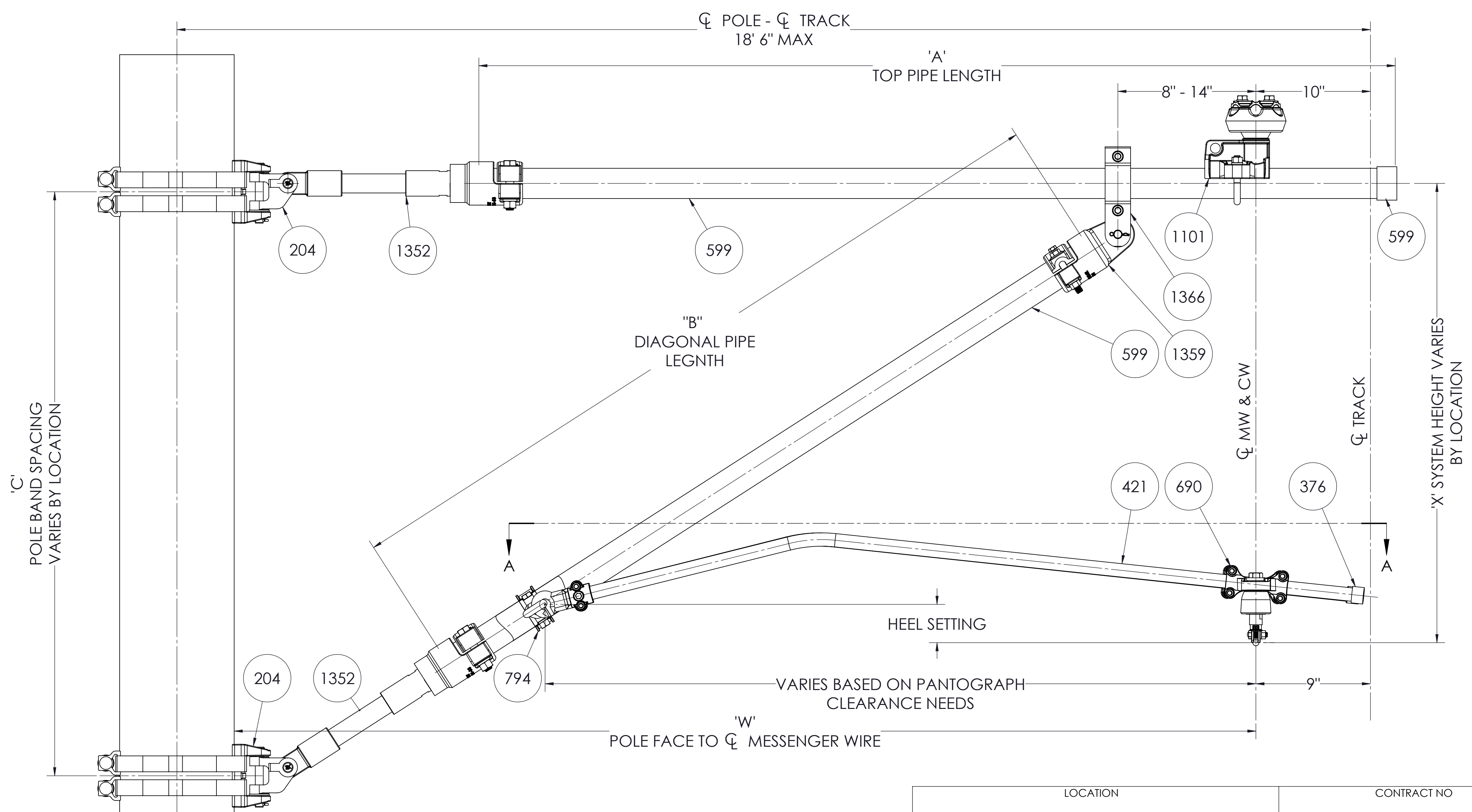


ITEM #	QTY.	PART NUMBER	DESCRIPTION
84	1	ESC200	CAP, 2" IPS SEAL, EXTERNAL PLASTIC
204	2	PBA-HCB-A01	POLE BAND W/ HINGE
376	2	ESC75	CAP, 3/4" IPS SEAL, EXTERNAL (1" DIA TUBE)
421	2	CSA75-1BSR-AA840	STEADY ARM, 3/4 IPS, 1-BEND, SCH80, GR-B, RL:
599	*	PGSB200-40-L	PIPE, 2" IPS X SCH 40 WALL, ASTM A106, GR B, TYPE E
690	2	CSCA100-6-5AA	CLAMP, INSULATED CONTACT SWIVEL, CW:350MCM
794	1	BSC200-FR-2AA	PIPE CLAMP, LINK TYPE
1101	1	MSCAI821-20050S-A06	INSULATOR, MESSENGER SADDLE 2" IPS, 500 MCM SINGLE
1352	2	INS-ST2-A13	STRUT INSULATOR, 2" IPS, 750VDC
1366	1	BSCA200-63-A03	CLEVIS PIPE CLAMP, 2" IPS, 5/8" PIN. ADDED CLEARANCE
1359	1	TPSC200-C-63-AA	PIPE TO EYE END CLAMP



LOCATION		CONTRACT NO		CUST/CONTR																			
<p>THIS DRAWING AND ALL INFORMATION ON IT IS THE PROPERTY OF AFL. IT IS CONFIDENTIAL AND IT IS GIVEN TO YOU FOR A LIMITED PURPOSE AND MUST BE RETURNED UPON REQUEST. NEITHER THIS DRAWING OR ANY PART OF IT NOR ANY INFORMATION CONCERNING IT MAY BE COPIED, EXHIBITED, OR FURNISHED TO OTHERS NOR PHOTOGRAPHS TAKEN OF ANY ARTICLE FABRICATED OR ASSEMBLED FROM THE DRAWING WITHOUT THE CONSENT OF AFL.</p>																							
<table border="1"> <thead> <tr> <th colspan="6">REVISIONS</th> </tr> <tr> <th>REV</th> <th>DESCRIPTION</th> <th>DATE</th> <th>BY</th> <th>APR</th> <th></th> </tr> </thead> <tbody> <tr> <td>1</td> <td>REBUILD/REDIMENSIONED FOR AMTRAK</td> <td>08.25.14</td> <td>EE</td> <td>JL</td> <td></td> </tr> </tbody> </table>						REVISIONS						REV	DESCRIPTION	DATE	BY	APR		1	REBUILD/REDIMENSIONED FOR AMTRAK	08.25.14	EE	JL	
REVISIONS																							
REV	DESCRIPTION	DATE	BY	APR																			
1	REBUILD/REDIMENSIONED FOR AMTRAK	08.25.14	EE	JL																			
<p>DRN BY: DJ DRN DATE: 1.27.14 CHK BY: JL CHK DATE: 1.27.14 PA2013.0</p>		<p><b>AFL DOSSERT</b> CANTILEVER PULL OFF, HEAVY LOAD MW:500 CW:350</p>		<p>REV: 1 AFLS-CA0-LR-08 DWG NO: AFLS-CA0-LR-08 1 OF 1</p>																			