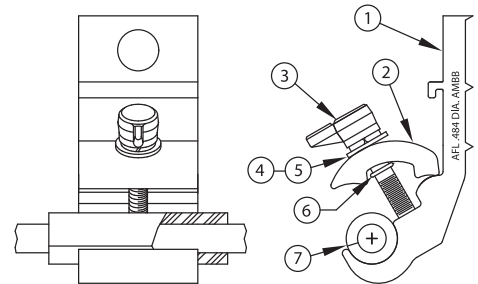


Installation Instructions for ADSS Mini-Bracket Tangent Support

Mini Brackets are used for short and medium spans of ADSS fiber optic cable as well as Aerial Drop cables. Mini Brackets are sized to fit specific ADSS diameters. Standard Mini Brackets are employed with fitted bushings to provide a good support/groove fit and to prevent the support from damaging the cable. The bolted supports are supplied with aluminum captive bolts to simplify installation with no loose parts.

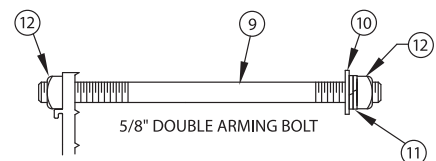
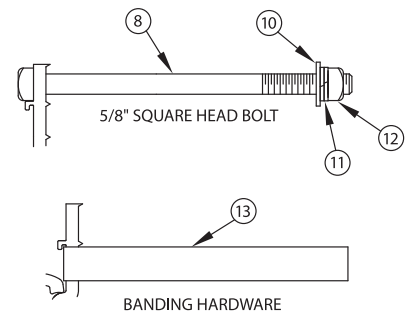
List of Supplied Materials

1. Support body
2. Support keeper
3. Thumb screw assembly ("L"-knob with 5/16" socket head cap screw)
4. Lock washer - 5/16"
5. Flat washer - 5/16"
6. O-ring
7. Bushing (split tube)



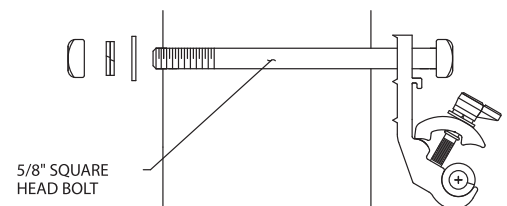
Customer Supplied Materials for Various Installation Options

8. 5/8" square head bolt with 5/8-11 UNC threads (galvanized steel)
9. 5/8" double arming bolt with 5/8-11 UNC threads (galvanized steel)
10. Flat washer - 5/8" (galvanized steel)
11. Lock washer - double coil - 5/8" (galvanized steel)
12. Square nut - 5/8" (galvanized steel)
13. Stainless steel banding



Installation Instructions – Using Square Head Bolt

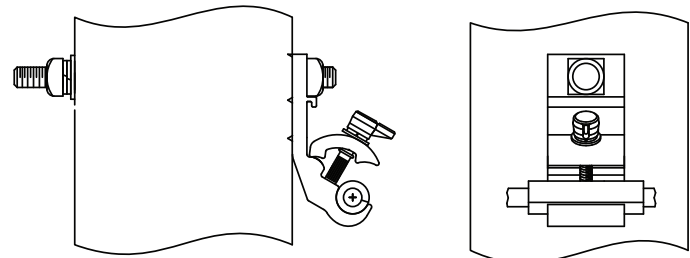
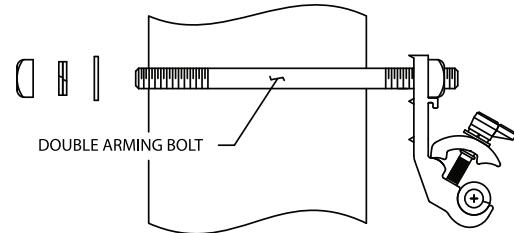
1. At attachment location of ADSS mini-bracket tangent support, drill through pole for a 5/8" diameter bolt.
2. Insert square head bolt through ADSS mini-bracket tangent support and drilled hole in pole.
3. Tighten in place with washer, double coil lock washer and nut. Nut to be tightened to 40 lbf-ft.



Installation Instructions for ADSS Mini-Bracket Tangent Support (continued)

Installation Instructions – Using Double Arming Bolt

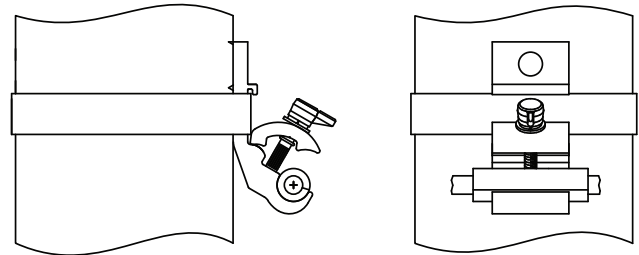
1. At attachment location of ADSS mini-bracket tangent support, drill through pole for a 5/8" diameter bolt.
2. Insert double arming bolt through ADSS mini-bracket tangent support and drilled hole in pole.
3. Tighten in place with washer, double coil lock washer and nut. Nut to be tightened to 40 lbf-ft.



INSTALLED ON POLE

Installation Instructions – Using Stainless Steel Banding

1. Band the ADSS mini-bracket tangent support securely to the pole at the approximate location.
2. The stainless steel band is to be located as illustrated (banding furnished by customer).

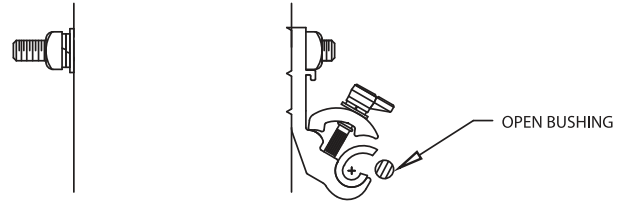


INSTALLED ON POLE

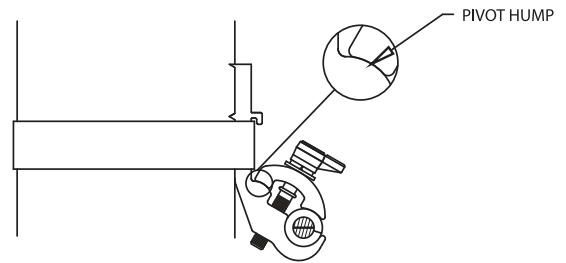
Installation Instructions for ADSS Mini-Bracket Tangent Support (continued)

Installation Instructions – Cable Installation

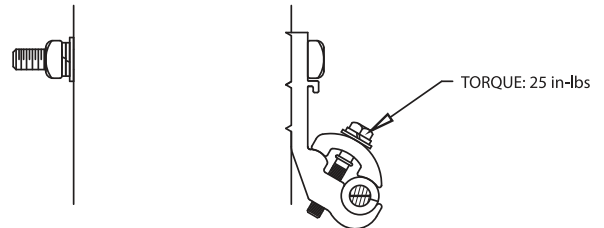
- Loosen the thumb screw to raise keeper approximately one inch (1.0"). This will give the clearance required for cable installation.
- Separate split bushing and insert cable.
- Insure cable is seated properly, then tighten thumb screw until keeper contacts split bushing



- Before tightening, check to ensure the keeper is straight and on the pivot hump as illustrated.
- Tighten by hand (as tight as possible!).
- Torque to be 22 in-lbs minimum. This torque will be met or exceeded by hand tightening to the maximum obtainable.



- If assemblies have a clamping bolt, tighten bolt to 25 in-lbs.



- The maximum line angle (horizontal plane) and maximum sag angle (vertical plane) is 17 degrees (8.5 degrees per side).

CABLE DESCRIPTION	PART NO.	NESC RATING		
Drop Cable (.256" dia.)	AMBB 256	Heavy - 150'	Medium - 275'	Light - 450'
Drop Cable (.307" dia.)	AMBB 307	Heavy - 220'	Medium - 400'	Light - 675'
Mini-Span 323	AMBB 323	Heavy - 175'	Medium - 300'	Light - 450'
Mini-Span 383	AMBB 383	Heavy - 175'	Medium - 300'	Light - 450'
Mini-Span 424	AMBB424	Heavy - 275'	Medium - 400'	Light - 525'
Mini-Span 484	AMBB 484-535	Heavy - 275'	Medium - 400'	Light - 525'
Mini-Span 535		Heavy - 350'	Medium - 550'	Light - 675'
Mini-Span 610	AMBB 610	Heavy - 350'	Medium - 550'	Light - 675'

