



CLEANING & INSPECTION

Dry Cleaning Solutions | Wet Cleaning Solutions | Cleaning Kits
Fiber Optic Connector Inspection Products

Founded in 1984, AFL is an international manufacturer providing end-to-end solutions to the energy, service provider, enterprise, hyperscale and industrial markets as well as several emerging markets.

AFL's products are in use in over 130 countries and include fiber optic cable and hardware, transmission and substation accessories, outside plant equipment, connectivity, test and inspection equipment, and fusion splicing systems.

AFL also offers a wide variety of services supporting data center, enterprise, wireless and outside plant applications.

AFL is dedicated to bringing our customers a quality product as well as delivering superior value.



Table of Contents

Push-Type Cleaners	2
One-Click® Cleaners	2
One-Click® Cleaner MMC NEW	4
NEOCLEAN Cleaners	5
One-Click® Cleaner MMC	6
Cletop Optical Fiber Connector Cleaner	8
FCC2 Enhanced Fiber Connector Cleaner and Preparation Fluid	9
Debris Destroyer® Fiber Cleaning Pen.	10
Optical Cloth Wipes.	11
CCT Connector Cleaning Tips.	12
Cletop Adapter Cleaning Sticks (ACT)	13
Cleaning Kits.	14
Splicer V-groove Cleaning Kit.	16
FOCIS Lightning®2 Multi-Fiber Optic Connector Inspection System	17
FOCIS Flex – Fiber Optic Connector Inspection System	21
FOCIS Flex No Wireless Fiber Optic Connector Inspection System	25

NEW

Push-Type Cleaners

One-Click® Cleaners

Features

- Patented single-action cleaning in a small ergonomic design
- Variety of sizes and types for different connector styles
- Cleans connectors in both jumpers and bulkhead adapters
- Low cost per clean

Applications

- Removing oil, dust, and dirt without damaging delicate fiber end-faces
- Both dry and wet cleaning (add cleaning fluid)
- Clean connectors in tight spaces
- Field or laboratory use

One-Click Cleaner

Easy-to-use solution for cleaning fiber optic connectors on jumpers and in adapters. Since over 85% of network outages are attributed to dirty and/or damaged connectors, it is critical to clean every connector! The patented One-Click Cleaner uses the mechanical push action to advance an optical grade cleaning tape while the cleaning tip is rotated to ensure the fiber end-face is effectively, but gently, cleaned. It is a favorite of field technicians for its ease of use, durability, effectiveness, and small size.

One-Click® Cleaner PRO - The One-Click Cleaner PRO is a high-performance cleaner built for speed and efficiency. It features an integrated guide cap design that reduces cleaning time up to 50% by eliminating constant switching of caps for cleaning the ferrule end-face on connectors, in or out of bulkhead adapters. The One-Click Cleaner Pro boasts over 775 cleaning cycles in an ergonomic push-type cleaner, which is a significant increase from the previous model's 500 clean limitation. Designed to meet the needs of data centers, factories, and FTTH environments, One-Click Cleaner PRO optimizes optical connectivity, reduces downtime, and improves efficiency, making it an essential tool for fiber connector cleaning.

Compact One-Click Cleaner Mini - Offering the same technology and performance as the original, the One-Click Cleaner mini enables cleaning connectors in tighter places. Its smaller size also makes it a great addition to test kits and cleaning kits. The mini One-Click Cleaners come in both 100+ or 500+ cleans per unit.

One-Click Ultra Cleaner 2.5 - The One-Click Ultra Cleaner 2.5 has an enlarged cleaning area to clean more of the connector end-face. Cleaning up to a 2 mm diameter area of the connector end-face, the One-Click Ultra Cleaner 2.5 is a superior cleaner for SC, ST, and FC connectors.

One-Click Cleaner D-LC (Duplex LC) - The One-Click Cleaner D-LC cuts cleaning time in half by effectively cleaning both connectors of a duplex LC connector simultaneously. Available in a long-lasting 500+ clean pen shape.



Push-Type Cleaners

One-Click® Cleaners

One-Click Cleaner MPO and MPO-16

The One-Click Cleaner MPO/MPO-16 is a revolutionary push-type cleaner that simplifies cleaning of the ferrule end-face of MPO/MTP® connector. The One-Click MPO-16 cleans 16-fiber MPO/MTP connectors, both pinned (male) and socketed (female). MPO-16 is used with IEEE 802.3bs 400G trunk cabling with each fiber carrying 25 Gbps data signals (400GBASE-SR16 for example), among other applications.

One-Click Cleaner CS/MDC Duplex

The One-Click Cleaner CS/MDC cuts cleaning time in half by effectively cleaning both connectors of a duplex CS/MDC at one time.

One-Click Cleaner SN Duplex

The One-Click Cleaner SN cuts cleaning time in half by effectively cleaning both connectors of a duplex SN at one time.

One-Click Cleaner HOC

The Hardened Outdoor Connector (HOC) One-Click Cleaner is an essential cleaning tool for OptiTap®, TITAN RTD®, TRIDENT®, and SC connectors. The new design of the HOC Cleaner allows it to be used for Plug/Receptacle without the need for the conventional guide cap.



MPO

MPO-16



CS, MDC

SN Duplex

HOC

Ordering Information

DESCRIPTION	AFL NO.
One-Click Cleaner SC, ST, FC (500+ cleans)	8500-05-0001MZ
One-Click Cleaner MU/LC (500+ cleans)	8500-05-0002MZ
One-Click Cleaner ODC, outdoor connector (500+ cleans)	8500-05-0004MZ
One-Click Cleaner Mini-100 SC, ST, FC (100+ cleans)	8500-05-0005MZ
One-Click Mini-100 MU/LC (100+ cleans)	8500-05-0006MZ
One-Click Cleaner Mini-500 SC, ST, FC (500+ cleans)	8500-05-0009MZ
One-Click Cleaner Mini-500 MU/LC (500+ cleans)	8500-05-0010MZ
One-Click Ultra Cleaner 2.5 (enlarged cleaning) SC, ST, FC (500+ cleans)	8500-05-0007MZ
One-Click Cleaner D-LC, Duplex LC (2 x 500+ cleans)	8500-05-0008MZ
One-Click Cleaner MPO (500+ cleans)	8500-05-0030MZ
One-Click Cleaner MPO-16 (500+ cleans)	8500-05-0013MZ
One-Click Cleaner MT-RJ (500+ cleans)	8500-05-0031MZ
One-Click Cleaner M20, 2.0 mm ferrule (500+ cleans)	8500-05-0014MZ
One-Click Cleaner CS, MDC Duplex (500+ cleans)	8500-05-0015MZ
One-Click Cleaner SN Duplex (500+ cleans)	8500-05-0016MZ
One-Click Cleaner HOC, Hardened Optic Connectors (500+ cleans)	8500-05-0018MZ
One-Click Cleaner SC Pro (775+ cleans)	8500-05-PRO-SC
One-Click Cleaner LC Pro (775+ cleans)	8500-05-PRO-LC
BOXES OF 5 UNITS	
One-Click Cleaner SC, ST, FC (box of 5 units)	8500-05-0021MZ
One-Click Cleaner MU/LC (box of 5 units)	8500-05-0022MZ
One-Click Cleaner Mini-100 SC, ST, FC (box of 5 units)	8500-05-0025MZ
One-Click Cleaner Mini-100 MU/LC (box of 5 units)	8500-05-0026MZ
One-Click Ultra Cleaner 2.5 SC, ST, FC (box of 5 units)	8500-05-0027MZ
One-Click Cleaner MPO-16 (box of 5 units)	8500-05-0023MZ

NEW



MMC-16

MMC-24

Push-Type Cleaners

One-Click® Cleaner MMC

Features

- Cleans high-density, low-insertion-loss pinned or unpinned MMC connectors
- Patented single-action cleaning in a small ergonomic design
- Precise mechanical action delivers consistent cleaning results
- Automatic tape advance ensures each clean is performed with fresh cleaning tape

Applications

- Clean MMC-16 and MMC-24 connectors on jumpers and in adapters
- Maximum density, pre-terminated cabling installations
- High fiber count data center interconnects
- Structured cabling

Designed to clean Very Small Form Factor (VSFF) MMC multi-fiber connectors used in Data Centers and other high density optical networks, the new One-Click Cleaner MMC is a revolutionary push-type cleaner, which simplifies cleaning of the ferrule end-face of both MMC exposed connectors and connectors in adapters.

Ease of use - With its patented push-action cleaning, the One-Click Cleaner MMC removes dirt, dust, and contaminants with just one click. Its straightforward use requires no training. Simply insert and click to clean MMC connectors

Maximized efficiency - By utilizing the one-click design, technicians can speed through the cleaning process. No manual wipes or wet solvents are needed. The mechanical push action instantly advances the optical grade cleaning tape while the cleaning tip is rotated to ensure the MMC end-face is effectively, but gently, cleaned.

Increased uptime - With the move to next-gen VSFF data-center connectivity, it is essential to maintain connections for optimal performance. Using the specialized One-Click Cleaner MMC, technicians can clean MMC-16 and MMC-24 connectors easily and effectively in 1/2 the time as traditional methods leading to reliable signal transmission and extended lifespan of the connector.

Ordering Information

DESCRIPTION	AFL NO.
One-Click Cleaner MMC for MMC-16 Connectors (500+ cleans)	8500-05-MMC16
One-Click Cleaner MMC for MMC-24 Connectors (500+ cleans)	8500-05-MMC24

Push-Type Cleaners

NEOCLEAN Cleaners



NEOCLEAN-E Models (E1, E2, E3)



NEOCLEAN-M

Features

- Push action
- Replaceable cleaning cartridge - 750 cleaning per cartridge (NEOCLEAN-E)
- Low cost per clean

Applications

- Cleans connectors on jumpers or in adapters
- SC, FC, ST, E2000, LC, and MU connectors
- MPO and MTP connectors
- Suitable for field or laboratory use

NEOCLEAN-E uses a push action to clean contamination from the end-face of connectors on jumpers or in adapters. The replaceable cleaning cartridge can perform 750 cleans, reducing cleaning cost.

NEOCLEAN-M is designed for cleaning MPO and MTP multi-fiber connectors used in data centers and other high-density optical networks. It uses a one-push operation, which simplifies cleaning of the ferrule end-face of both MPO and MTP connectors and connectors in adapters.

Ordering Information

MODEL	APPLICABLE CONNECTORS & DESCRIPTION	# OF CLEANS	AFL NO.
NEOCLEAN-E1	For MU, LC with UPC/APC polishes	750+	8500-15-0900MZ
NEOCLEAN-E2	For SC,FC with UPC/APC polishes; OptiTap		8500-15-0901MZ
NEOCLEAN-E3	For SC, ST, FC, E2000 with UPC/APC polishes; OptiTap		8500-15-0902MZ
NEOCLEAN-M	For MPO/MTP	600+	8500-15-0909MZ

Recommended Products



FOCIS Flex Connector Inspection

- Self-contained, tether-free, hand-held
- Auto-focus and auto-centering for fast, easy inspection
- IEC, IPC and user-defined pass/fail analysis



Cletop Cleaners

- Simple push-button shutter application
- Easily replaceable cost-effective tape cartridges
- Over 400 wipes per tape



FCC2 Cleaning Fluid

- Unique dispenser for use with AFL Connector Cleaning Tips and FiberWipes
- Dissipates static charge
- Up to 400+ cleanings per can

Contact Sales@AFLglobal.com to schedule a demonstration or learn how to buy.

Visit www.AFLglobal.com/Clean to learn more about Push-Type Cleaners.

International Sales and Service Contact Information available at www.AFLglobal.com/Test/Contacts



Push-Type Cleaners

One-Click® Cleaner MMC

Features

- Cleans high-density, low-insertion-loss pinned or unpinned MMC connectors
- Patented single-action cleaning in a small ergonomic design
- Precise mechanical action delivers consistent cleaning results
- Automatic tape advance ensures each clean is performed with fresh cleaning tape

Applications

- Clean MMC-16 and MMC-24 connectors on jumpers and in adapters
- Maximum density, pre-terminated cabling installations
- High fiber count data center interconnects
- Structured cabling

Designed to clean Very Small Form Factor (VSFF) MMC multi-fiber connectors used in Data Centers and other high density optical networks, the new One-Click Cleaner MMC is a revolutionary push-type cleaner, which simplifies cleaning of the ferrule end-face of both MMC exposed connectors and connectors in adapters.

Ease of use - With its patented push-action cleaning, the One-Click Cleaner MMC removes dirt, dust, and contaminants with just one click. Its straightforward use requires no training. Simply insert and click to clean MMC connectors

Maximized efficiency - By utilizing the one-click design, technicians can speed through the cleaning process. No manual wipes or wet solvents are needed. The mechanical push action instantly advances the optical grade cleaning tape while the cleaning tip is rotated to ensure the MMC end-face is effectively, but gently, cleaned.

Increased uptime - With the move to next-gen VSFF data-center connectivity, it is essential to maintain connections for optimal performance. Using the specialized One-Click Cleaner MMC, technicians can clean MMC-16 and MMC-24 connectors easily and effectively in 1/2 the time as traditional methods leading to reliable signal transmission and extended lifespan of the connector.

Ordering Information

DESCRIPTION	# OF CLEANS	AFL NO.
One-Click Cleaner MMC for MMC-16 Connectors	500+ cleans	8500-05-MMC16
One-Click Cleaner MMC for MMC-24 Connectors	500+ cleans	8500-05-MMC24

Push-Type Cleaners

One-Click® Cleaner MMC

PRODUCT HIGHLIGHTS



Easy-to-use



Purpose-designed tool



Speeds cleaning process



Hand-held cleaner



No training required

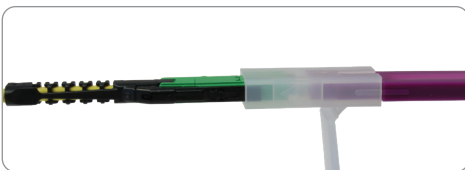
Consistent cleaning results
Automatic tape advance ensures each clean is performed with fresh cleaning tape

500+ cleans
Over 500 cleans in both One-Click Cleaner MMC-16 or MMC-24 versions.

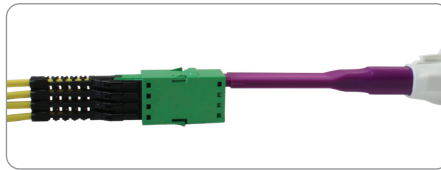
Extended nozzle
Easy reach for dense MMC connectors

Ergonomic design
One-handed operation makes cleaning quick and easy

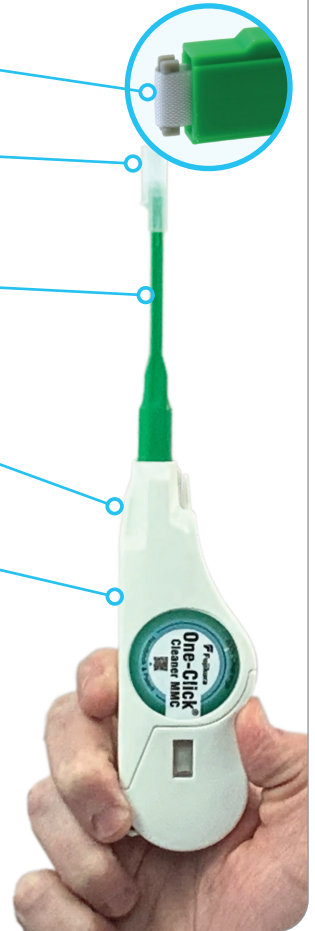
Must-have tool for field use
A favorite of field technicians for its ease of use, durability, effectiveness, and small size



Cleaning MMC-16 connector on jumper



Cleaning MMC-16 connector in adapters



Recommended Products



FOCIS Lightning®2 Multi-Fiber Optic Connector Inspection System

- Self-contained, tether-free, hand-held
- Auto-focus and auto-centering for fast, easy inspection
- IEC, IPC and user-defined pass/fail analysis



Cletop Cleaners

- Simple push-button shutter application
- Easily replaceable cost-effective tape cartridges
- Over 400 wipes per tape



FCC2 Cleaning Fluid

- Unique dispenser for use with AFL Connector Cleaning Tips and FiberWipes
- Dissipates static charge
- Up to 400+ cleanings per can

Contact Sales@AFLglobal.com to schedule a demonstration or learn how to buy.

Visit www.AFLglobal.com/Clean to learn more about Push-Type Cleaners.

International Sales and Service Contact Information available at www.AFLglobal.com/Test/Contacts

Cletop Optical Fiber Connector Cleaner



Features

- Simple push-button shutter application
- Compact lightweight design
- Easily replaceable cost-effective tape cartridges
- Over 400 wipes per tape

Applications

- Ideal for labs, assembly lines, and field use
- Cleans a wide variety of connector types
- Excellent anti-static properties for static sensitive applications

The Cletop Optical Fiber Connector Cleaner is a rugged palm-sized cleaner that offers exceptional performance with a proven track record. The choice of many leading manufacturers and telecom carries worldwide for nearly 20 years, Cletop is a name you can rely on.

Cletop Options

- Cletop Series – Original
- Cletop –S Series - Second generation cleaner offering “Drop-in” replacement tape cartridge and ergonomic design
- Type A & -SA - Designed for single 2.5mm ferrules (SC, FC, ST, & D4)
- Type B & -SB - Cleans SC, SC2, FC, ST®, DIN, D4, MU, LC, MT, MPO/MTP® without pins

Ordering Information

DESCRIPTION	AFL NO.
CLETOP – S SERIES	
Cletop -SA with Blue Tape	8500-10-0020MZ
Cletop -SB with Blue Tape	8500-10-0029MZ
Cletop -SB with White Tape	8500-10-0016MZ
Replacement Tape Type S - Blue	8500-10-0021MZ
Replacement Tape Type S - White	8500-10-0017MZ

DESCRIPTION	AFL NO.
CLETOP ORIGINAL SERIES	
Cletop Type A with Blue Tape	8500-10-0027MZ
Cletop Type A with White Tape	8500-10-0011MZ
Cletop Type B with Blue Tape	8500-10-0028MZ
Cletop Type B with White tape	8500-10-0014MZ
Cletop for MT-RJ with pins (White Tape)	8500-10-0032MZ
Cletop for MPO/MTP with pins (White Tape)	8500-10-0033MZ
Replacement Tape Blue	8500-10-0012MZ
Replacement Tape White	8500-10-0015MZ

Recommended Products



Cleaning Kits

- Complete kits for cleaning variety of connectors
- Includes wet and dry cleaning products
- Convenient refill options



One-Click® Cleaners

- Patented single-action
- Variety of sizes and types
- Low cost per clean



WFW FiberWipes™

- Lint free and fully optical grade
- Robust and tear-resistant
- Softer than traditional cellulose wipes

Contact Sales@AFLglobal.com to schedule a demonstration or learn how to buy.

Visit www.AFLglobal.com/Clean to learn more about Cletop Optical Fiber Connector Cleaners.

International Sales and Service Contact Information available at www.AFLglobal.com/Test/Contacts

Cleaning Fluids and Wipes

FCC2 Enhanced Fiber Connector Cleaner and Preparation Fluid



Features

- Not Hazardous/Not Regulated for all modes of transport, including air cargo
- Unique dispenser for use with AFL Connector Cleaning Tips and FiberWipes™
- Dissipates static charge
- Up to 400+ cleanings per can

Applications

- Cleans of all types of connector end-faces
- Cleans bare fiber before field terminating or fusion splicing
- Removes oils, salts, dust, dirt, and uncured epoxies
- Safe on glass, ceramic, metal, plastic optical fiber

FCC2 Enhanced Fiber Connector Cleaner and Preparation Fluid is a nonflammable, environmentally safe, residue-free solvent engineered to clean fiber connector end-faces and bare fiber. The 3-way dispenser provides easy one-handed use as tap dispenser for fiber wipes, a well for CCT Connector Cleaning Tips, and a spray nozzle for larger areas. Packaged in a spill-proof container, it can be shipped with connector cleaning and termination kits providing everything techs need in the field. FCC2 was developed with Micro Care Corporation, a world leader in cleaning solvents.

Ordering Information

DESCRIPTION	AFL NO.
Fiber Connector Cleaner and Preparation Fluid in 3 oz / 85 g can	FCC2-00-0902
Fiber Connector Cleaner and Preparation Fluid , Case of 12 cans	FCC2-00-0903

Recommended Products



FOCIS Flex Connector Inspection

- Self-contained, tether-free, hand-held
- Auto-focus and auto-centering for fast, easy inspection
- IEC, IPC and user-defined pass/fail analysis



One-Click® Cleaners

- Patented single-action
- Variety of sizes and types
- Low cost per clean



Cletop Cleaners

- Simple push-button shutter application
- Easily replaceable cost-effective tape cartridges
- Over 400 wipes per tape

Cleaning Fluids and Wipes

Debris Destroyer® Fiber Cleaning Pen



Features

- Precise applicator tip for controlled cleaning
- Eliminates electrostatic charge
- Designed for use with One-Click® Cleaners, FiberWipes™, CleanWipes™
- Safe for plastic components

Applications

- Cleaning fiber optic connector end-faces and bare fiber
- Wet to dry cleaning with wipes and One-Click cleaners
- Ideal for bare fiber preparation prior to fusion splicing
- Remove dirt, dust, oils, and other debris from fiber optic components

The Debris Destroyer is a cleaning pen for fiber optic connectors and bare fiber. It can be used for controlled application of cleaning fluid to cassette cleaners and wipes. AFL offers multiple products that can be used with the Debris Destroyer, including CLETOP-S, OPTIPOP-R, FiberWipe, and CleanWipe. The Debris Destroyer can also be used to moisten the tip of One-Click cleaners, turning them into a wet cleaning solution for tough end-face contamination.

Ordering Information

DESCRIPTION	AFL NO.
Debris Destroyer Fiber Cleaning Pen, 9 grams/0.32 oz.	FCC3-00-PEN1

Recommended Products



FOCIS Flex Connector Inspection

- Self-contained, tether-free, hand-held
- Auto-focus and auto-centering for fast, easy inspection
- IEC, IPC and user-defined pass/fail analysis



CleTOP Cleaners

- Simple push-button shutter application
- Easily replaceable cost-effective tape cartridges
- Over 400 wipes per tape



One-Click® Cleaners

- Patented single-action
- Variety of sizes and types
- Low cost per clean

Cleaning Fluids and Wipes

Optical Cloth Wipes



FiberWipes

Features

- Lint free and fully optical grade
- Robust and tear-resistant
- Softer than traditional cellulose wipes

Applications

- Cleaning optical fibers prior to termination or splicing
- Cleaning fiber optic connector ferrule end-faces
- Cleaning lenses, mirrors, and other optical surfaces
- Use for wet cleaning with FCC2 Connector Cleaning Fluid or FCC3 Fiber Cleaning Pen

Specifically designed to lift and trap common contaminants found in fiber optic installations, AFL wipes provide superior cleaning results because they are made from material that is stronger, softer, and more absorbent than traditional cellulose wipes. Packaged in a clean room, the fabric is optical-quality grade and comes in two convenient form factors and are perfect additions to both tool kits and test kits.

WFW FiberWipes™

- Rugged 90-wipe mini-tub ideal for laboratory and field use
- Hexagonal cover minimizes rolling distance when dropped
- Solvent safe – wipes may be moistened to provide wet / dry cleaning

Ordering Information

DESCRIPTION	AFL NO.
FiberWipes – 90 optical quality wipes per tub, (1 tub)	9000-03-0025MZ
FiberWipes – case of 24 mini-tubs (2160 total wipes, 90 wipes per mini-tub)	9000-03-0026MZ

Recommended Products



FOCIS Flex Connector Inspection

- Self-contained, tether-free, hand-held
- Auto-focus and auto-centering for fast, easy inspection
- IEC, IPC and user-defined pass/fail analysis



Cletop Cleaners

- Simple push-button shutter application
- Easily replaceable cost-effective tape cartridges
- Over 400 wipes per tape



One-Click® Cleaners

- Patented single-action
- Variety of sizes and types
- Low cost per clean

Contact Sales@AFLglobal.com to schedule a demonstration or learn how to buy.

Visit www.AFLglobal.com/Clean to learn more about Cleaning Fluids and Wipes.

International Sales and Service Contact Information available at www.AFLglobal.com/Test/Contacts

Cleaning Sticks

CCT Connector Cleaning Tips



Features

- Molded sintered polymer construction
- Traps and holds liquid and particle contaminant
- Quality construction with unlimited shelf life

Applications

- Clean ferrule end-faces on jumpers and in adapters
- Clean most common commercial and Mil Spec ferrule sizes
- Combine with AFL's FCC2 Fiber Connector Cleaner for wet/dry cleaning

CCT Connector Cleaning Tips are a unique technology for fiber connector end-face cleaning. Rather than a fabric-covered or foam-covered stick, CCTs are molded cleaning tips that trap contamination and wick cleaning solvents away from connector end-faces. These tips use a molded, sintered polymer that is both porous and pliable, conforming to virtually any fiber end-face polish geometry while trapping and absorbing contaminants. They are designed to be used with AFL's FCC2 Connector Cleaning Fluid for consistent and reliable connector cleaning results.

CCT Connector Cleaning Tips Configurations

- CCTS and CCTX series: cleaning tip is exposed for cleaning ferrule end-faces in alignment sleeves that are recessed within sockets or bulkhead adaptors
- CCTP series: cleaning tip is recessed in the "straw" for cleaning exposed ferrules and termini (jumpers). Fits 2.5 mm and smaller ferrules

Ordering Information

DESCRIPTION	TUBE COLOR	STICKS QTY	AFL NO.
CCT CONNECTOR CLEANING TIPS - DOUBLE-ENDED			
For exposed 2.5 mm, 2.0 mm, 1.6 mm, 1.25 mm ferrules and termini (FC, SC, ST, LC, MU, etc., jumpers, male MIL T 29504/14 for MIL C 28876 and MIL T 29504/04 for MIL C 38999)	Yellow	20	CCTP-25-0900MZ
For 2.5 mm ferrule in adapters or sockets (SC, FC, ST, etc. in adapters)	Blue	40	CCTS-25-0900MZ
For 1.25 mm ferrule in adapters or sockets (LC, MU, etc., in adapters)	Green	40	CCTS-12-0900MZ
For MT-RJ connectors and 2.0 mm and 1.6 mm termini in sockets (female MIL T 29504/15 for MIL C 28876 and MIL T 29504/05 for MIL C 38999, MT-RJ both jumpers and adapters)	Orange	40	CCTS-16-0900MZ
For Biconic and MT ferrule connectors both jumpers and in adapters (Biconic, MTP, MPO, MPX, etc.)	Pink	20	CCTX-MT-0900MZ
CCT TIPS ARE AVAILABLE IN BULK PACKS OF SINGLE-ENDED STICKS. PACKS OF 50 STICKS PACKAGED IN BOXES OF 6 PACKS (300 sticks)			
For exposed 2.5 mm, 2.0 mm, 1.6 mm, 1.25 mm ferrules and termini (FC, SC, ST, LC, MU, etc., jumpers, male MIL T 29504/14 for MIL C 28876 and MIL T 29504/04 for MIL C 38999)	Yellow	300	CCTP-25-0910MZ
For 2.5 mm ferrule in adapters or sockets (SC, FC, ST, etc. in adapters)	Blue	300	CCTS-25-0910MZ
For 1.25 mm ferrule in adapters or sockets (LC, MU, etc., in adapters)	Green	300	CCTS-12-0910MZ
For MT-RJ connectors and 2.0 mm and 1.6 mm termini in sockets (female MIL T 29504/15 for MIL C 28876 and MIL T 29504/05 for MIL C 38999, MT-RJ both jumpers and adapters)	Orange	300	CCTS-16-0910MZ
For Biconic and MT ferrule connectors both jumpers and in adapters (Biconic, MTP, MPO, MPX, etc.)	Pink	300	CCTX-MT-0910MZ

Cleaning Sticks

Cletope Adapter Cleaning Sticks (ACT)



Features

- Easy to use and efficient
- Delivers a consistently high level of cleaning performance
- Available for most common commercial connectors (ST, SC, FC, & MU)

Applications

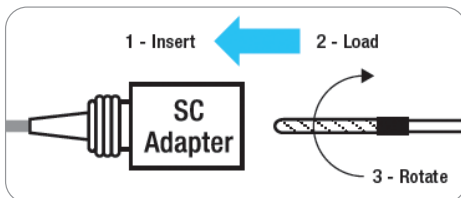
- Clean ferrule end-faces inside the plug-in fiber optic connectors and various adapters
- Cleans adapter alignment sleeves
- Cleans LEMO connectors for video applications

Cletope ACTs offered by AFL are an easy and efficient means of cleaning fiber optics connectors in adapters and cleaning alignment sleeves. Cletope sticks are available in sizes for most common commercial connectors (ST, SC, FC, LC, MU), military connectors, and LEMO connectors for video applications. When connectors need to be cleaned inside adapters, you can rely on the Cletope stick.

Ordering Information

DESCRIPTION	APPLICABLE CONNECTORS	AFL NO.
ACT-01 — 2.5 mm Cletope Sticks (Box of 200)	FC, SC, ST, D4	8500-10-0024MZ
ACT-02 — 1.25 mm Cletope Sticks (Box of 200)	LC, MU	8500-10-0022MZ
ACT-03 — 2.0 mm Cletope Sticks (Box of 200)	Military termini, high definition television camera connectors such as LEMO	8500-10-0023MZ
Double-ended 2.0/2.5 mm Cletope Sticks (Box of 100)	Military termini, high definition television camera connectors such as LEMO	8500-10-0030MZ

Recommended Cleaning Procedure for ACT Cleaning Sticks



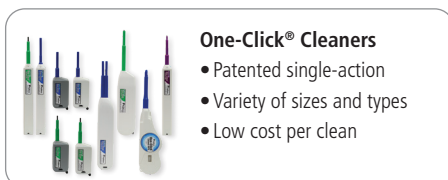
Procedure:

- 1. Insert** - Ensure that stick is held straight when inserting into sleeve.
- 2. Load** - Apply sufficient pressure (approximately 600-700 g) to ensure ferrule is a little depressed in sleeve.
- 3. Rotate** stick clockwise 4-5 times while ensuring direct contact with ferrule end-face is maintained.

Notes:

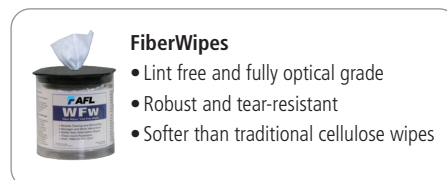
1. Number of possible wipes: Maintenance (repair) - approximately 1 use; Equipment construction - 4 uses (max.)
2. FCC2 Fluid will improve cleaning performance.

Recommended Products



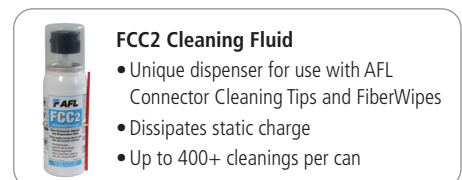
One-Click® Cleaners

- Patented single-action
- Variety of sizes and types
- Low cost per clean



FiberWipes

- Lint free and fully optical grade
- Robust and tear-resistant
- Softer than traditional cellulose wipes



FCC2 Cleaning Fluid

- Unique dispenser for use with AFL Connector Cleaning Tips and FiberWipes
- Dissipates static charge
- Up to 400+ cleanings per can

Contact Sales@AFLglobal.com to schedule a demonstration or learn how to buy.

Visit www.AFLglobal.com/Clean to learn more about Cleaning Sticks and Cletope Sticks.

International Sales and Service Contact Information available at www.AFLglobal.com/Test/Contacts

Cleaning Kits



FCP1 Kit

FCP2 Kit



FCP3 Kit

Features

- Mix of wet and dry cleaning products for most applications
- MPO/MTP® Option
- Field portable
- Convenient refill options

Applications

- Field cleaning connectors on jumpers and through bulkhead adapters
- Clean SC, ST, FC, LC, MU, and MPO connectors
- Clean a variety of contaminants

Cleaning saves time and money! Over 85% of network failures can be traced back to dirty and damaged connectors. The foolproof way to avoid these outages is to inspect and clean every connector, every time - without fail. You should even inspect new ones right out of the box. Proper fiber hygiene can extend the life of connectors and reduces replacement costs. FCP Cleaning Kits from AFL offer a complete selection of fiber optic cleaning products for field cleaning of connector end-faces in a convenient carry case.

FCP1 kits consist of a wall or rack mountable carry case, FCC2 Fiber Connector Cleaner and Preparation Fluid, CCT Connector Cleaning Tips, Cletop-SB, and color-coded instructions.

FCP2 kits include FCC2 Fiber Connector Cleaner and Preparation Fluid, FCC3 Debris Destroyer® Fiber Cleaning Pen, WFW FiberWipes™, Cletop SB, One-Click Cleaners for SC, ST, FC, LC/MU, MPO connectors, and a field portable duffle bag.

FCC3 kits include FCC2 Fiber Connector Cleaner and Preparation Fluid, FCC3 Debris Destroyer® Fiber Cleaning Pen, CCT Connector Cleaning Tips, Cletop-SB, One-Click Cleaners for SC, ST, FC, LC/MU, MPO connectors, and an easy-access soft carry case.

Cleaning Kits


Ordering Information

FCP1 WALL/RACK MOUNTABLE FIELD PORTABLE CLEANING KITS	AFL NO.		
	FCP1-00-0901	FCP1-00-0907	FCP1-00-0914
CONTENTS / ITEMS DESCRIPTION			
FCC2 Fiber Connector Cleaner And Preparation Fluid (Can)	◆	◆	◆
CCTS-12 (for 1.25 mm ferrule) Connector Cleaning Tips		◆	◆
CCTS-25 (for 2.5 mm ferrule) Connector Cleaning Tips	◆	◆	◆
CCTP-25 (for all connectors) Connector Cleaning Tips	◆	◆	◆
CCTX-MT (for MTP, MPO, MPX connectors) Connector Cleaning Tips		◆	
Cletop-S, Type B with White Tape	◆	◆	◆
Color-coded Instructions	◆	◆	◆
Wall/Rack Mountable Carry Case	◆	◆	◆

FCP2 FIELD PORTABLE DUFFLE BAG CLEANING KITS	AFL NO.	
	FCP2-10-0900	FCP2-00-0901
CONTENTS / ITEMS DESCRIPTION		
FCC2 Fiber Connector Cleaner and Preparation Fluid (Can)	◆	◆
FCC3 Debris Destroyer® Fiber Cleaning Pen	◆	◆
WFW FiberWipes™	◆	◆
Cletop-S, Type B with White Tape	◆	◆
One-Click Cleaner SC, ST, FC	◆	◆
One-Click Cleaner MU/LC	◆	◆
One-Click Cleaner MPO		◆
Field Portable Duffle Bag	◆	◆


FCP3 EASY-ACCESS CLEANING KITS	AFL NO.	
	FCP3-00-0900	FCP3-00-0901
CONTENTS / ITEMS DESCRIPTION		
FCC2 Fiber Connector Cleaner And Preparation Fluid (Can)	◆	◆
FCC3 Debris Destroyer® Fiber Cleaning Pen	◆	◆
CCTS-12 (for 1.25 mm ferrule) Connector Cleaning Tips	◆	◆
CCTS-25 (for 2.5 mm ferrule) Connector Cleaning Tips	◆	◆
Cletop-S, Type B with White Tape	◆	◆
One-Click Cleaner SC, ST, FC	◆	
One-Click Cleaner MU/LC	◆	◆
One-Click Cleaner Ultra 2.5 (enlarged cleaning) SC, ST, FC	◆	◆
One-Click Cleaner D-LC, Duplex LC		◆
One-Click Cleaner MPO	◆	◆
Soft Carry Case	◆	◆

Recommended Products



FOCIS Flex & FOCIS Lightning (Multi-fiber) Connector Inspection

- Self-contained, tether-free, hand-held inspection solution
- Auto-focus and auto-centering for fast, easy inspection
- IEC, IPC and user-defined pass/fail analysis
- FOCIS Lightning: extremely fast multi-fiber auto-analysis for datacom and telecom inspection applications



FOCIS WiFi2™ Fiber Optic Connector Inspection

- Trim, lightweight, ergonomic and highly productive tool
- App-based automatic and manual focus; auto-centering after image capture
- One button workflow using rapid LED feedback on probe
- Multi-color LED on probe for fast pass/fail user inspection feedback

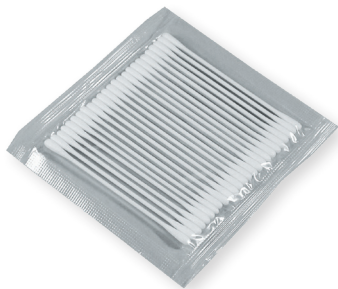
Contact Sales@AFLglobal.com to schedule a demonstration or learn how to buy.

Visit www.AFLglobal.com/Clean to learn more about Cleaning Kits.

International Sales and Service Contact Information available at www.AFLglobal.com/Test/Contacts



Splicer V-groove Cleaning Refill Kit



CS-1 Cotton Swabs

Splicer V-groove Cleaning Kit

Today's splicing equipment is fast, efficient, and requires minimal maintenance due to advances in splicing technology. However, contamination in the V-groove of the splicer is still a primary source of trouble for the splicing technician. This is especially problematic when splicing with a fixed V-groove fusion splicer. Environmental contamination, such as dust, dirt and fiber coating debris, as well as the silica deposits generated during the fusion process eventually find their way to the surface of the v-groove. This contamination will offset the fibers and degrade performance. To help control this problem, a disciplined cleaning regimen and specific tooling is required to ensure the splice is right the first time.

To solve cleaning needs, AFL offers the Splicer V-groove Cleaning Kit. This product integrates eight components into an affordable and effective inspection and cleaning solution for any fusion splicer. Small and lightweight, it fits easily into the Fujikura splicer transit case or it can be carried separately in its own carrying case.

Kit Includes

- Scrubber Brush with stiff tapered nylon bristles
- Sweeper Brush with soft nylon bristles
- Eye Loupe with 3X to 12X magnification
- LED Pen Light with momentary or constant on switching
- Cleaning Fluid that is nonflammable and environmentally safe
- Lint-free Cotton Swabs
- Instruction Sheet with illustrations
- Canvas Carrying Case

Refill Kit Includes

To replenish the consumables within the kit, AFL provides a refill kit that includes the following components:

- One can of FCC2 Cleaning Fluid
- One Scrubber Brush
- One Sweeper Brush
- Ten packs CS-1 Cotton Swabs (250 swabs)

Ordering Information

DESCRIPTION	AFL NO.
Splicer V-groove Cleaning Kit	S014397
Splicer V-groove Cleaning Refill Kit	S014416
CS-1 Cotton Swabs (pack of 25 swabs)	S003719

FOCIS Lightning®2 Multi-Fiber Optic Connector Inspection System



Mobile App



PC Software



Features

- Large, simple-to-use touch screen
- Self-contained, tether-free, compact, hand-held inspection solution
- Auto-focus and auto-centering for fast, easy inspection
- Up to 8x zoom for enhanced fiber end-face viewing
- Stores 10k images or easily shares data via USB or Bluetooth connectivity
- IEC, IPC, AT&T, and user-defined auto-analysis
- Wide variety of adapter tips for MPO and single-fiber connector types

Applications

- Inspect multi-fiber and single-fiber connectors and adapters
- Data center fiber network installation, turn-up, and troubleshooting
- Inspect hardened connectors in FTTx network
- Verify proper connector cleaning practices
- Pair with OTDR for comprehensive reporting

FOCIS Lightning2 is a compact self-contained inspection probe that captures and displays the entire MPO end-face image in less than two seconds. One button provides auto-focusing, centering, and Pass/Fail analysis at the connector and individual fiber level. It can be used to inspect MPO-8, -12, -16, -24 and -32 connectors. Results can be easily shared via USB and Bluetooth®.

Pass/Fail results in seconds: FOCIS Lightning2 was designed to quickly inspect multi-fiber connectors and bulkheads, such as MPO and MTP®, including multi-row varieties. It can perform industry standard and user-defined end-face cleanliness analysis at a rate of about 1 second per fiber – significantly speeding up inspection time when compared with other technologies.

Internal storage and multiple export options: FOCIS Lightning2 can store 10,000 individual fiber images, analysis, overlays, and zones tables locally and can provide optional Bluetooth wireless links for archiving and reporting. AFL's FlexApp (iOS and Android) provides a comprehensive and user-friendly feature set as well as connectivity with AFL's FlexReporter-Cloud.

Untethered operation: With rechargeable battery and integrated 3.5" TFT color LCD touchscreen, FOCIS Lightning2 can be used independently.

Multi-fiber front-end adapter tips: Multi-fiber front-end adapter tips support single row and multi-row MPO connector inspection for a wide range of patch cords and bulkhead-mounted connectors having either PC/UPC or APC polished end-faces. The probe snout includes a key which in combination with a slot on the adapter tips ensures that adapter tips never loosen during use, under any circumstances.

Easy reporting and archiving: The FlexReporter™ software suite is a complete platform for report generation and results sharing. This platform includes FlexApp, a mobile App that wirelessly transfers test results from the field to the Cloud. These results can be accessed via FlexReports that provide a variety of easy-to-use options for report generation. FlexReports Basic is included with all AFL OTDRs and enables users to quickly view and analyze results, generate simple single-fiber OTDR and OLTS reports. FlexReports Basic also includes a 60-day Advanced trial that includes full reporting and OTDR Trace Batch Editing.

FOCIS Lightning®2 Multi-Fiber Optic Connector Inspection System

Specifications^a

OPTICAL PORT PARAMETERS	SPECIFICATION
Field of View (FOV; viewed on FOCIS Lightning2)	LFOV ^b Live: 4333 x 6500 µm and 4333 x 5418 µm LFOV ^b Captured: 4333 x 5418 µm Multi Fibers Live: 3200 x 4800 µm and 3200 x 4000 µm Multi Fibers Captured: 3200 x 4000 µm Multi Fibers Captured, Details: 200 x 225 µm Single Fiber Live: 1314 x 2144 µm and 1314 x 1788 µm Single Fiber Captured: 1314 x 1626 µm
Field of View (FOV; viewed on a PC)	LFOV ^b : 4333 x 6500 µm Multi Fibers: 3200 x 4800 µm Single Fiber: 1314 x 2144 µm
Manual Detection Capability (minimum)	0.25 µm
Auto Analysis Resolution	<1.0 µm
Internally Stored Image Size (pixels)	LFOV ^b : 3840 x 2560 JPG file Multi Fibers: 3840 x 2560 JPG file, N x 160 x 160 pixels .GIF files Single Fiber: 3840 x 2560 JPG file, 468 x 468 pixels .GIF file
Bluetooth Image and Overlay	2 x QVGA (320 x 240; image + overlay) to AFL test instruments 2 x VGA (640 x 480; image + overlay) files to Apple iOS and Android devices (IAP / MFi)
Maximum No Damage Live Fiber Power Level	+20 dBm; image cannot be viewed if fiber is live
Focus Methods	Auto-focus and manual focus
Centering	Auto-centering captured single fiber images
Zoom in Live Mode	1x / 2x / 4x / 8x zoom
Image Capture with Pass/Fail Analysis	IEC 61300-3-35 (2015), AT&T TP-76461, IPC-8497-1, user-set criteria
Results Storage (Image and Pass/Fail Results)	Yes
File Format	JPG, GIF
File Storage Capacity	10,000 files
Result Storage Capacity	Multi Fibers: 1000; Single Fiber:1500
OPERATING FEATURES	
Bluetooth Characteristics (Wireless only)	IAP (iPod Accessory Protocol), SPP 0 x 1101, Apple MFi
USB Characteristics	Connector USB-C, Charging, USB 2.0 Mass Storage Device
ENVIRONMENT PARAMETERS	
Storage Temperature	-40 °C to +70 °C
Operating Temperature	0 °C to +50 °C
Relative Humidity	0 to 95% RH
Vibration Limits	2G (transportation)
Transit Drop (without soft case)	300 mm (12 inches, all sides, dust cover installed)
Transit Drop (with soft case)	460 mm (18 inches, all sides, dust cover installed)

Notes:

- All specifications valid at 23°C ±2°C (73.4°F ±3.6°F).
- Large Field of View (LFOV) parameters are provided using LFOV MPO PC and APC adapters.
- Operating conditions: 60 tests in 20 minutes, then auto-off; repeat each hour.
- Trademarks are the property of their respective owners.

FOCIS Lightning®2 Multi-Fiber Optic Connector Inspection System

Specifications^a

PHYSICAL AND POWER CHARACTERISTICS	
Display Size, Type, Resolution	3,5" color TFT touch screen with backlit, 320 x 480 with brightness control
Battery Type	Li-Pol, user-replaceable
Operating Time (typical)	8 hours ^c ; 5 hours continuous ^c
Power Save Features	Auto-off (disabled, 2, 5, 10 min)
Low-Battery Warning	Alerts when ≤15 minutes battery operation remains
Size	67 x 32 x 190 mm (2.7 x 1.3 x 7.5 in)
Weight	280 g (0.62 lb)
Safety & Compliance Certifications	UL, CE, FCC

Ordering Information

DESCRIPTION	AFL NO.
FOCIS Lightning2 Kit, soft carry case, USB cable, with no tips or One-Click® cleaner	FOCIS-LT2-N
FOCIS Lightning2 Kit, soft carry case, USB cable, (1) UPC ferrule and bulkhead adapter tip, (2) One-Click MPO cleaners	FOCIS-LT2-U
FOCIS Lightning2 Kit, soft carry case, USB cable, (1) APC ferrule and bulkhead adapter tip, (2) One-Click MPO cleaners	FOCIS-LT2-A
FOCIS Lightning2 Kit, soft carry case, USB cable, (1) UPC and (1) APC ferrule and bulkhead adapter tips, (2) One-Click MPO cleaners	FOCIS-LT2-UA
FOCIS Lightning2 Kit, soft carry case, USB cable, (1) UPC and (1) APC ferrule and bulkhead adapter tips, (2) One-Click MPO cleaners, single fiber adapter	FOCIS-LT2-UASF
FOCIS Lightning2 No Wireless Kit, soft carry case, USB cable, with no tips or One-Click cleaner	FOCIS-LT2-NW-N
FOCIS Lightning2 No Wireless Kit, soft carry case, USB cable, (1) UPC ferrule and bulkhead adapter tip, (2) One-Click MPO cleaners	FOCIS-LT2-NW-U
FOCIS Lightning2 No Wireless Kit, soft carry case, USB cable, (1) APC ferrule and bulkhead adapter tip, (2) One-Click MPO cleaners	FOCIS-LT2-NW-A
FOCIS Lightning2 No Wireless Kit, soft carry case, USB cable, (1) UPC and (1) APC ferrule and bulkhead adapter tips, (2) One-Click MPO cleaners	FOCIS-LT2-NW-UA
FOCIS Lightning2 No Wireless Kit, soft carry case, USB cable, (1) UPC and (1) APC ferrule and bulkhead adapter tips, (2) One-Click MPO cleaners, single-fiber adapter	FOCIS-LT2-NW-UASF

FOCIS Lightning Adapter Tips and Accessories

DESCRIPTION	TIP ID	AFL NO.
Adapter tip for MPO-12/24 APC bulkhead (with key)	M12A	FLTNG-01-M12A
Adapter tip for MPO-12/24 UPC bulkhead (with key)	M12U	FLTNG-01-M12U
Adapter tip for MPO-16/32 UPC bulkhead (with key)	M16U	FLTNG-01-M16U
Adapter tip for MPO-12/16/24/32 UPC bulkhead (no key)	MPOU	FLTNG-01-MPOU
Adapter Tip for MPO-12/16/24/32 APC connector (with key)	MAC	FLTNG-01-MAC
Adapter Tip for MPO-12/16/24/32 UPC connector (with key)	MUC	FLTNG-01-MUC
Adapter Tip for OptiTip male (pinned) connector	OPTM	FLTNG-01-OPTM
Adapter Tip for OptiTip female (unpinned) connector	OPTF	FLTNG-01-OPTF
Coupler for most 'FFLX' single fiber connector adapter tips	SFC	FLTNG2-01-SFC
Extended adapter tip for LC-APC bulkhead	ALCM	FLTNG-01-ALCM
Extended adapter tip for LC-UPC bulkhead	ULCM	FLTNG-01-ULCM
MPO extender barrel	MPE	FLTNG-01-MPE
Adapter tip for Large Field of View (LFOV) - UPC	LVU	FLTNG2-01-LVU

Notes:

- All specifications valid at 23 °C ±2°C (73.4 °F ±3.6 °F).
- Large Field of View (LFOV) parameters are provided using LFOV MPO PC and APC adapters.
- Operating conditions: 60 tests in 20 minutes, then auto-off; repeat each hour.
- Trademarks are the property of their respective owners.


FOCIS Lightning®2 Multi-Fiber Optic Connector Inspection System

Test Management and Reporting Software

FlexReports Basic software is available as free download on AFL Software Resources website. FlexReports Basic includes a 60-day Advanced software trial. Once the evaluation period ends, users must upgrade to FlexReports Advanced software license to continue using FlexReports Advanced features.


DESCRIPTION	AFL NO.
FlexReports Advanced, one seat license on USB	RPTS-AD-USB-1
FlexReports Advanced, one seat, Upgrade from TRM® 3 Advanced on USB. Users must have TRM-3 Advanced license	RPTS-UP-TRM3-1
FlexReports Basic, available for download on AFL Software Resources website	FlexReports Basic
FlexApp data transfer mobile App, available on Google Play and Apple App Store	FlexApp

Recommended Products



FlexScan® FS300 (quad) and FS200 (single-mode) OTDRs

- SmartAuto® 1-button automated testing for fast results
- LinkMap® color-coded icons for easy troubleshooting
- Flexpress® mode (FS200) completes OTDR test in <5 seconds!
- Integrated Source, Power Meter and VFL



One-Click® Cleaner MPO / MPO-16

- Ideal for Data Centers and high density optical networks
- Designed to work on MTP®/MPO multi-fiber connectors
- Cleans connectors on jumpers and in adapters

Qualifications

CATEGORY	REGULATION/STANDARD	QUALIFICATION
CE Marking	EU	Compliant to relevant EU Directives on health, safety, and environmental protection, and certified with CE marking
Safety /EMC /EMI	IEC	Compliant to IEC 61010-1 for safety requirements for electrical equipment
	EN	Compliant to EN 61010-1 for safety requirements for electrical equipment
	IEC	Compliant to IEC 61326-1 for EMC requirements for electrical equipment
	EN	Compliant to EN 61326-1 for EMC requirements for electrical equipment
	EN	Compliant to EN 55011 for EMC requirements for industrial, scientific and medical equipment
	FCC	Compliant to code of federal regulations FCC 47 CFR 15 on unlicensed transmissions
RoHS	EU	Compliant to EU regulations Directive 2011/65/EU (RoHS 2) and Directive 2015/863 (RoHS 3)
Test Method	IEC	Compliant to IEC 61300-3-35 for visual inspection of fiber optic connectors and fiber-stub transceivers
	IPC	Compliant to IPC-8497-1 for cleaning methods and contamination assessment for optical assembly

Contact Sales@AFLglobal.com to schedule a demonstration or learn how to buy.

Visit www.AFLglobal.com/Test to learn more about FOCIS Lightning2.

International Sales and Service Contact Information available at www.AFLglobal.com/Test/Contacts.

FOCIS Flex – Fiber Optic Connector Inspection System

Easy, Fast, Compact, Tether-free

U.S. Patent 9,217,688



Features

- 1-button to auto-focus, center, capture, analyze, and save
- IEC, IPC, and user-defined pass/fail analysis
- Untethered, compact, hand-held inspection
- Use independently or pair with OTDR
- Save 10K results internally or share via WiFi or USB

Applications

- Inspect connectors on patch cords or in bulkhead adapters
- Optical network installation, troubleshooting, and maintenance
- Inspect MPO/MTP multi-fiber connectors
- Assure critical fiber infrastructure performs properly
- Keep fiber connections working at optimal performance levels
- Verify proper connector cleaning practices are being used

FOCIS Flex makes connector inspection simple, fast, and convenient. With the press of a single button, FOCIS Flex auto-focuses, captures and centers the end-face image, applies Pass/Fail rules, displays image and Pass/Fail results, saves results internally and/or wirelessly transfers data to a paired FlexScan OTDR or a smart device. It is fast, small, and easy to use to enable 100% connector inspection.

Independent, untethered operation: With rechargeable battery and integrated display, FOCIS Flex can be used independently without requiring an external OTDR or display unit.

Optional pairing with FlexScan OTDR or smart devices: Captured images and Pass/Fail results can be immediately displayed and easily saved on either paired FlexScan OTDR or a smart device equipped with the AFL's free FOCIS Flex App. This capability enables inspection results to be included in reporting and archiving.

Save results internally or externally: FOCIS Flex internally stores up to 10,000 results using file-naming capabilities similar to those of the FlexScan OTDR. A micro-USB port supports fast upload of internally stored results to PC and ensures your FOCIS Flex software can be updated to the latest features and supported languages.

Wide range of adapter tips: Interchangeable adapter tips support connector inspection for a wide range of both single-fiber and multi-fiber patchcords and bulkhead-mounted connectors having either PC or APC polished end-faces.

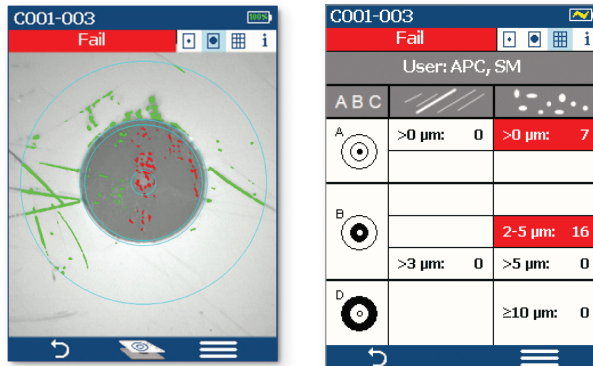
Bundled kits for significant savings: FOCIS Flex is available in kits that include a Basic license for Test Result Manager (TRM® 3.0), user-selected adapter tips and cleaning supplies, and a soft carry case.

Easy reporting and archiving: Included Test Result Manager (TRM 3.0) provides data processing and reporting locally via a PC. The FOCIS Flex mobile App is available for free download from Google play or App Store for sharing data with smart devices.

FOCIS Flex – Fiber Optic Connector Inspection System

Easy, Fast, Compact, Tether-free

U.S. Patent 9,217,688



Pass/Fail results in seconds: With the press of a single button, FOCIS Flex auto-focuses, captures and centers the end-face image, applies Pass/Fail rules, displays image and Pass/Fail results. Captured Pass/Fail results are easily viewed in either Image or Table view.

Image view shows end-face image with Pass/Fail region overlay, failing scratches/defects highlighted in red, and passing scratches/defects highlighted in green.

Table view shows analysis rule applied to determine Pass/Fail, analysis Zone IDs (A, B, C, D), scratch analysis results for each zone, and defect analysis results for each zone.

Specifications ^a

OPTICAL PERFORMANCE	
Field of View (viewed on FOCIS Flex)	Live: 710 x 860 µm; Captured, Zoomed Out: 560 x 600 µm; Captured, Partially Zoomed In: 360 x 390 µm; Captured, Fully Zoomed In: 180 x 195 µm
Field of View (Viewed on a PC)	Stored, Zoomed Out: 700 x 525 µm; Stored, Fully Zoomed In: 240 x 180 µm
Manual Detection Capability (minimum)	0.25 µm
Auto Analysis Resolution	<1.0 µm
Captured Image Size (Pixels)	648 x 480 VGA; Images stored internally in three .JPG files, one at each FOV
OPERATING FEATURES	
Focus	Auto-focus and manual focus
Centering	Auto-centering after capture
Pass/Fail Analysis	IEC 61300-3-35 (2015), IPC and user-defined criteria
Image Capture and File Storage Capacity	10,000 files
File Format (Image and Pass/Fail Results)	jpg, gif
Bluetooth Characteristics	SPP to FlexScan and FlexTester OTDRs; IAP to iOS devices
USB Characteristics	USB 1.1 mass storage device
Supported Languages	English, Chinese Simplified, Chinese Traditional, Finnish, French, German, Italian, Japanese, Korean, Polish, Russian, Spanish, Turkish
PHYSICAL AND POWER CHARACTERISTICS	
Display size, type, resolution	2.4", TFT, 240 x 320 with brightness control
Battery Type	NiMH, user replaceable
Battery Operating Time (typical)	8 hours (60 tests in 20 minutes each hour; auto-off enabled)
Recharge Time	<4.5 hours
Power Save Features	Auto-off (disabled, 2, 5, 10 minutes)
AC Charger voltage, frequency, current	100-240 V, 50/60 Hz, 5VDC, 2A
Size	47 x 37 x 183 mm (1.8 x 1.5 x 7.2 in)
Weight	240 g (0.5 lb)
ENVIRONMENTAL CHARACTERISTICS	
Operating Temperature	0 to +50 °C
Storage Temperature	-40 to +70 °C
Relative Humidity	95%, non-condensing
Transit and shock	2G vibration, 30G shock

Notes:

a. All specifications valid at 23°C ±2°C (73.4°F ±3.6°F).

FOCIS Flex – Fiber Optic Connector Inspection System

Easy, Fast, Compact, Tether-free

U.S. Patent 9,217,688

FlexScan OTDR PRO and BIPM Kits with FOCIS Flex

PRO Kits include the following items:

- FlexScan with accessories (AC charger, carry strap, SC/2.5 mm connector adapters, TRM® 3.0 Advanced Test Results Manager, carry case)
- FOCIS Flex Fiber Optic Connector Inspection System with accessories (AC charger, USB cable, soft carry case/holster)
- Two user-selected adapter tips and one user-selected One-Click Cleaner
- 150 m Fiber Ring (launch cable) with user-specified connectors

Complete kits expand on PRO Kits by adding bend insensitive fiber identifier with optional power meter (OFI-BIPM).

See FlexScan data sheet for FlexScan PRO and Complete Kit ordering information.

FOCIS Flex Adapter Tips (Contact AFL for adapter tips for other connector types)

DESCRIPTION	AFL NO.
SC-UPC bulkhead adapter tip	FFLX-01-SC
FC-UPC bulkhead adapter tip	FFLX-01-FC
ST-UPC bulkhead adapter tip	FFLX-01-ST
LC-UPC bulkhead adapter tip	FFLX-01-LC
Universal 2.5 mm, UPC ferrule adapter tip	FFLX-01-U25
Universal 1.25 mm, UPC ferrule adapter tip	FFLX-01-U125
SC-APC bulkhead adapter tip	FFLX-4S-ASC
FC-APC bulkhead adapter tip	FFLX-4S-AFC
LC-APC bulkhead adapter tip	FFLX-4S-ALC
Universal 2.5 mm, APC ferrule adapter tip	FFLX-01-A25
Universal 1.25 mm, APC ferrule adapter tip	FFLX-01-A125
FOCIS Flex adapter extension tube, straight, 46 mm	FFLX-01-EXTS46
FOCIS Flex adapter extension tube, straight, 80 mm:	FFLX-01-EXTS80
E2000 PC/UPC bulkhead adapter tip	FFLX-4S-E2K
E2000 APC bulkhead adapter tip	FFLX-4S-E2KA
Tip for SC/APC (OptiTap®) bulkhead adapter	FFLX-4S-OTA
Tip for OptiTap® APC ferrule and bulkhead adapter	DFS1-01-0013MR
MTP/PC ferrule & bulkhead adapter extended tip kit (base plus MTP/PC front end tip)	DFS1-00-0037MR
MTP/PC and MTP/APC ferrule & bulkhead adapter extended tip kit (base, MTP/PC, MTP/APC front end tips)	DFS1-00-0042MR
MTP/APC ferrule and bulkhead adapter extended tip kit (base plus MTP/APC front end tip)	DFS1-01-0010MR

Ordering Information

DESCRIPTION	AFL NO.
FOCIS Flex Kit, soft carry case/holster, USB cable, AC charger, TRM® 3.0 reporting software, reference guide, no tips	FOCIS-FLX-P4XN
FOCIS Flex Kit, soft carry case/holster, USB cable, AC charger, TRM 3.0 reporting software, reference guide, 2 user-selected UPC adapter tips (ferrule and bulkhead), user-selected One-Click cleaner	FOCIS-FLX-P4XU
FOCIS Flex Kit, soft carry case/holster, USB cable, AC charger, TRM 3.0 reporting software, reference guide, 2 user-selected APC adapter tips (ferrule and bulkhead), user-selected One-Click cleaner	FOCIS-FLX-P4XA
FOCIS Flex Kit, soft carry case/holster, USB cable, AC charger, TRM 3.0 reporting software, reference guide, user-selected UPC adapter tips (ferrule and bulkhead), 2 user-selected APC adapter tips (ferrule and bulkhead), user-selected One-Click cleaner	FOCIS-FLX-P4XUA

FOCIS Flex – Fiber Optic Connector Inspection System


Easy, Fast, Compact, Tether-free

U.S. Patent 9,217,688

Test Management and Reporting Software


DESCRIPTION	AFL NO.
TRM 3.0 with Basic License, USB delivery (included with all FOCIS Flex kits)	TRM3-BASIC
TRM 3.0 upgrade from Basic to Advanced License, USB delivery	TRM3-UPGRADE
TRM 3.0 upgrade from Basic to Advanced License, email delivery	TRM3-UP-EMAIL
FOCIS Flex App (Google play or App Store)	Free Download

Recommended Products



FlexScan® FS300 (quad) and FS200 (single-mode) OTDRs

- SmartAuto® 1-button automated testing for fast results
- LinkMap® color-coded icons for easy troubleshooting
- FleXpress® mode (FS200) completes OTDR test in <5 seconds!
- Integrated Source, Power Meter and VFL



OFI-BIPM Optical Fiber Identifier

- World class signal sensitivity
- Trigger lock, positive stop for optimum detection
- Integrated optical power meter option

Qualifications

CATEGORY	REGULATION/STANDARD	QUALIFICATION
CE Marking	EU	Compliant to relevant EU Directives on health, safety, and environmental protection, and certified with CE marking
Safety /EMC /EMI	IEC	Compliant to IEC 61010-1 for safety requirements for electrical equipment
	EN	Compliant to EN 61010-1 for safety requirements for electrical equipment
	IEC	Compliant to IEC 61326-1 for EMC requirements for electrical equipment
	EN	Compliant to EN 61326-1 for EMC requirements for electrical equipment
	EN	Compliant to EN 55011 for EMC requirements for industrial, scientific and medical equipment
	FCC	Compliant to code of federal regulations FCC 47 CFR 15 on unlicensed transmissions
	FDA	Compliant to code of federal regulations FDA 21 CFR 1040.10 and 1040.11 on laser products
	IEC	Compliant to IEC 60825-1 for safety of laser products
RoHS	EU	Compliant to EU regulations Directive 2011/65/EU (RoHS 2) and Directive 2015/863 (RoHS 3)
Test Method	IEC	Compliant to IEC 61300-3-35 for visual inspection of fiber optic connectors and fiber-stub transceivers
	IPC	Compliant to IPC-8497-1 for cleaning methods and contamination assessment for optical assembly

Contact Sales@AFLglobal.com to schedule a demonstration or learn how to buy.

Visit www.AFLglobal.com/Test to learn more about FOCIS Flex.

International Sales and Service Contact Information available at www.AFLglobal.com/Test/Contacts.

FOCIS Flex No Wireless Fiber Optic Connector Inspection System

Easy, Fast, Compact, Tether-free



Features

- Removes Bluetooth and WiFi features for secure network facility compliance
- 1-button to auto-focus, center, capture, analyze, and save
- IEC, IPC, and user-defined pass/fail analysis
- Untethered, compact, hand-held inspection
- Use independently or pair with OTDR
- Generate inspection reports using TRM® 3.0

Applications

- Inspect connectors on patch cords or in bulkhead adapters
- Optical network installation, troubleshooting, and maintenance
- Inspect MPO/MTP multi-fiber connectors
- Assure critical fiber infrastructure performs properly
- Keep fiber connections working at optimal performance levels
- Verify proper connector cleaning practices are being used

The FOCIS Flex No Wireless (NW) addresses the need of network maintenance contractors operating in secure environments, where devices emitting radio frequency (RF) communication signals are prohibited, such as government and defense facilities and restricted private enterprise network facilities. FOCIS Flex makes connector inspection simple, fast, and convenient. With the press of a single button, FOCIS Flex auto-focuses, captures and centers the end-face image, applies Pass/Fail rules, displays image and Pass/Fail results, saves results internally and/or wirelessly transfers data to a paired FlexScan OTDR or a smart device. It is fast, small, and easy to use to enable 100% connector inspection.

Independent, untethered operation: With rechargeable battery and integrated display, FOCIS Flex can be used independently without requiring an external OTDR or display unit.

Optional pairing with FlexScan OTDR or smart devices: Captured images and Pass/Fail results can be immediately displayed and easily saved on either paired FlexScan OTDR or a smart device equipped with the AFL's free FOCIS Flex App. This capability enables inspection results to be included in reporting and archiving.

Save results internally or externally: FOCIS Flex internally stores up to 10,000 results using file-naming capabilities similar to those of the FlexScan OTDR. A micro-USB port supports fast upload of internally stored results to PC and ensures your FOCIS Flex software can be updated to the latest features and supported languages.

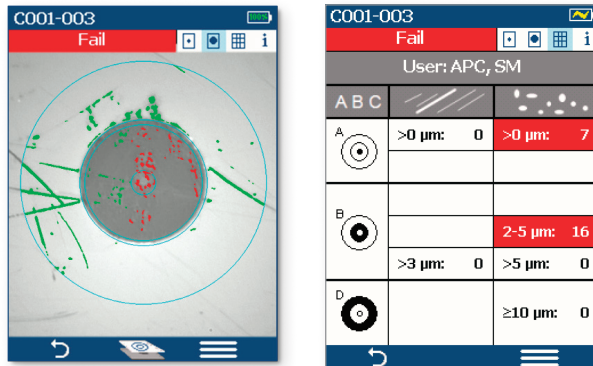
Wide range of adapter tips: Interchangeable adapter tips support connector inspection for a wide range of both single-fiber and multi-fiber patchcords and bulkhead-mounted connectors having either PC or APC polished end-faces.

Bundled kits for significant savings: FOCIS Flex is available in kits that include a Basic license for Test Result Manager (TRM® 3.0), user-selected adapter tips and cleaning supplies, and a soft carry case.

Easy reporting and archiving: Included Test Result Manager (TRM 3.0) provides data processing and reporting locally via a PC.

FOCIS Flex No Wireless Fiber Optic Connector Inspection System

Easy, Fast, Compact, Tether-free



Pass/Fail results in seconds: With the press of a single button, FOCIS Flex auto-focuses, captures and centers the end-face image, applies Pass/Fail rules, displays image and Pass/Fail results. Captured Pass/Fail results are easily viewed in either Image or Table view.

Image view shows end-face image with Pass/Fail region overlay, failing scratches/defects highlighted in red, and passing scratches/defects highlighted in green.

Table view shows analysis rule applied to determine Pass/Fail, analysis Zone IDs (A, B, C, D), scratch analysis results for each zone, and defect analysis results for each zone.

Specifications ^a

OPTICAL PERFORMANCE	
Field of View (viewed on FOCIS Flex)	Live: 710 x 860 μ m; Captured, Zoomed Out: 560 x 600 μ m; Captured, Partially Zoomed In: 360 x 390 μ m; Captured, Fully Zoomed In: 180 x 195 μ m
Field of View (Viewed on a PC)	Stored, Zoomed Out: 700 x 525 μ m; Stored, Fully Zoomed In: 240 x 180 μ m
Manual Detection Capability (minimum)	0.25 μ m
Auto Analysis Resolution	<1.0 μ m
Captured Image Size (Pixels)	648 x 480 VGA; Images stored internally in three .JPG files, one at each FOV
OPERATING FEATURES	
Focus	Auto-focus and manual focus
Centering	Auto-centering after capture
Pass/Fail Analysis	IEC 61300-3-35 (2015), IPC and user-defined criteria
Image Capture and File Storage Capacity	10,000 files
File Format (Image and Pass/Fail Results)	jpg, gif
USB Characteristics	USB 1.1 mass storage device
Supported Languages	English, Chinese Simplified, Chinese Traditional, Finnish, French, German, Italian, Japanese, Korean, Polish, Russian, Spanish, Turkish
PHYSICAL AND POWER CHARACTERISTICS	
Display size, type, resolution	2.4", TFT, 240 x 320 with brightness control
Battery Type	NiMH, user replaceable
Battery Operating Time (typical)	8 hours (60 tests in 20 minutes each hour; auto-off enabled)
Recharge Time	<4.5 hours
Power Save Features	Auto-off (disabled, 2, 5, 10 minutes)
AC Charger voltage, frequency, current	100-240 V, 50/60 Hz, 5VDC, 2A
Size	47 x 37 x 183 mm (1.8 x 1.5 x 7.2 in)
Weight	240 g (0.5 lb)
ENVIRONMENTAL CHARACTERISTICS	
Operating Temperature	0 to +50 °C
Storage Temperature	-40 to +70 °C
Relative Humidity	95%, non-condensing
Transit and shock	2G vibration, 30G shock

Notes:

a. All specifications valid at 23°C \pm 2°C (73.4°F \pm 3.6°F).

FOCIS Flex No Wireless Fiber Optic Connector Inspection System

Easy, Fast, Compact, Tether-free

FlexScan OTDR PRO and BIPM Kits with FOCIS Flex

PRO Kits include the following items:

- FlexScan with accessories (AC charger, carry strap, SC/2.5 mm connector adapters, TRM® 3.0 Advanced Test Results Manager, carry case)
- FOCIS Flex Fiber Optic Connector Inspection System with accessories (AC charger, USB cable, soft carry case/holster)
- Two user-selected adapter tips and one user-selected One-Click Cleaner
- 150 m Fiber Ring (launch cable) with user-specified connectors

Complete kits expand on PRO Kits by adding bend insensitive fiber identifier with optional power meter (OFI-BIPM).

See FlexScan data sheet for FlexScan PRO and Complete Kit ordering information.

FOCIS Flex Adapter Tips (Contact AFL for adapter tips for other connector types)

DESCRIPTION	AFL NO.
SC-UPC bulkhead adapter tip	FFLX-01-SC
FC-UPC bulkhead adapter tip	FFLX-01-FC
ST-UPC bulkhead adapter tip	FFLX-01-ST
LC-UPC bulkhead adapter tip	FFLX-01-LC
Universal 2.5 mm, UPC ferrule adapter tip	FFLX-01-U25
Universal 1.25 mm, UPC ferrule adapter tip	FFLX-01-U125
SC-APC bulkhead adapter tip	FFLX-4S-ASC
FC-APC bulkhead adapter tip	FFLX-4S-AFC
LC-APC bulkhead adapter tip	FFLX-4S-ALC
Universal 2.5 mm, APC ferrule adapter tip	FFLX-01-A25
Universal 1.25 mm, APC ferrule adapter tip	FFLX-01-A125
FOCIS Flex adapter extension tube, straight, 46 mm	FFLX-01-EXTS46
FOCIS Flex adapter extension tube, straight, 80 mm:	FFLX-01-EXTS80
E2000 PC/UPC bulkhead adapter tip	FFLX-4S-E2K
E2000 APC bulkhead adapter tip	FFLX-4S-E2KA
Tip for SC/APC (OptiTap®) bulkhead adapter	FFLX-4S-OTA
Tip for OptiTap® APC ferrule and bulkhead adapter	DFS1-01-0013MR
MTP/PC ferrule & bulkhead adapter extended tip kit (base plus MTP/PC front end tip)	DFS1-00-0037MR
MTP/PC and MTP/APC ferrule & bulkhead adapter extended tip kit (base, MTP/PC, MTP/APC front end tips)	DFS1-00-0042MR
MTP/APC ferrule and bulkhead adapter extended tip kit (base plus MTP/APC front end tip)	DFS1-01-0010MR

Ordering Information

DESCRIPTION	AFL NO.
FOCIS Flex Kit, soft carry case/holster, USB cable, AC charger, TRM® 3.0 reporting software, reference guide, no tips	FOCIS-FLX-NW-P4XN
FOCIS Flex Kit, soft carry case/holster, USB cable, AC charger, TRM 3.0 reporting software, reference guide, 2 user-selected UPC adapter tips (ferrule and bulkhead), user-selected One-Click cleaner	FOCIS-FLX-NW-P4XU
FOCIS Flex Kit, soft carry case/holster, USB cable, AC charger, TRM 3.0 reporting software, reference guide, 2 user-selected APC adapter tips (ferrule and bulkhead), user-selected One-Click cleaner	FOCIS-FLX-NW-P4XA

FOCIS Flex No Wireless Fiber Optic Connector Inspection System

Easy, Fast, Compact, Tether-free

Test Management and Reporting Software

DESCRIPTION	AFL NO.
TRM 3.0 with Basic License, USB delivery (included with all FOCIS Flex No Wireless. kits)	TRM3-BASIC
TRM 3.0 upgrade from Basic to Advanced License, USB delivery	TRM3-UPGRADE
TRM 3.0 upgrade from Basic to Advanced License, email delivery	TRM3-UP-EMAIL

Recommended Products



FS300



FS200

FlexScan® FS300 (quad) and FS200 (single-mode) OTDRs

- SmartAuto® 1-button automated testing for fast results
- LinkMap® color-coded icons for easy troubleshooting
- Flexpress® mode (FS200) completes OTDR test in <5 seconds!
- Integrated Source, Power Meter and VFL



OFI-BIPM Optical Fiber Identifier

- World class signal sensitivity
- Trigger lock, positive stop for optimum detection
- Integrated optical power meter option

Qualifications

CATEGORY	REGULATION/STANDARD	QUALIFICATION
CE Marking	EU	Compliant to relevant EU Directives on health, safety, and environmental protection, and certified with CE marking
Safety /EMC /EMI	IEC	Compliant to IEC 61010-1 for safety requirements for electrical equipment
	EN	Compliant to EN 61010-1 for safety requirements for electrical equipment
	IEC	Compliant to IEC 61326-1 for EMC requirements for electrical equipment
	EN	Compliant to EN 61326-1 for EMC requirements for electrical equipment
	EN	Compliant to EN 55011 for EMC requirements for industrial, scientific and medical equipment
	FCC	Compliant to code of federal regulations FCC 47 CFR 15 on unlicensed transmissions
	FDA	Compliant to code of federal regulations FDA 21 CFR 1040.10 and 1040.11 on laser products
RoHS	IEC	Compliant to IEC 60825-1 for safety of laser products
	EU	Compliant to EU regulations Directive 2011/65/EU (RoHS 2) and Directive 2015/863 (RoHS 3)
Test Method	IEC	Compliant to IEC 61300-3-35 for visual inspection of fiber optic connectors and fiber-stub transceivers
	IPC	Compliant to IPC-8497-1 for cleaning methods and contamination assessment for optical assembly

Contact Sales@AFLglobal.com to schedule a demonstration or learn how to buy.

Visit www.AFLglobal.com/Test to learn more about FOCIS Flex No Wireless.

International Sales and Service Contact Information available at www.AFLglobal.com/Test/Contacts.

Please contact your AFL Sales Representative for information about our other products or services.

**FIBER OPTIC CABLE
(OPGW, ADSS, Loose Tube)**



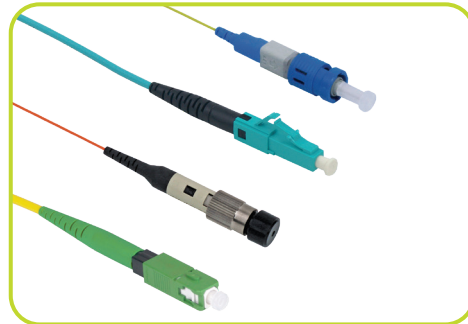
**TEST AND INSPECTION
EQUIPMENT**



**FUSION SPLICING
SYSTEMS AND ACCESSORIES**



**FIELD-INSTALLABLE
CONNECTORS**



International Sales and Service Contact Information

Available at www.AFLglobal.com/Test/Contacts

