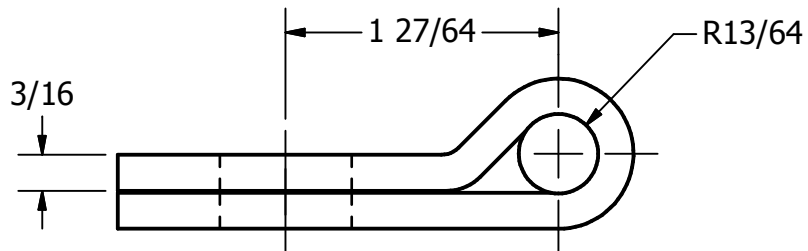
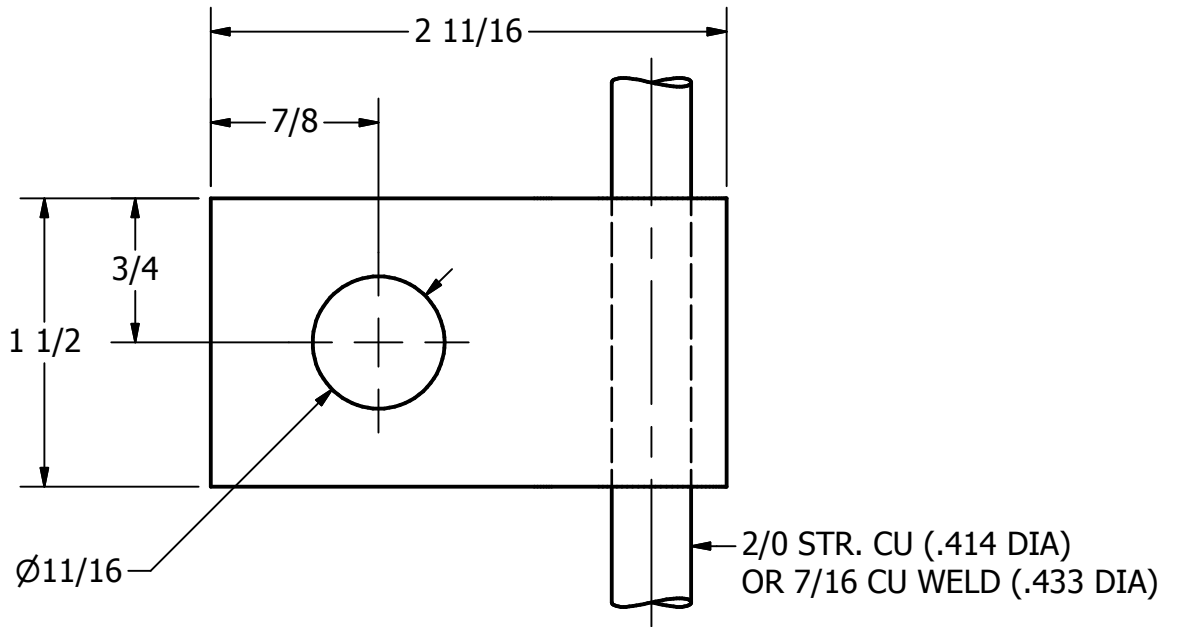


ITEM NO


DWG NO  
D-5634

THIS DRAWING AND ALL INFORMATION ON IT IS THE PROPERTY OF AFL. IT IS CONFIDENTIAL AND IT IS GIVEN TO YOU FOR A LIMITED PURPOSE AND MUST BE RETURNED UPON REQUEST. NEITHER THIS DRAWING OR ANY PART OF IT NOR ANY INFORMATION CONCERNING IT MAY BE COPIED, EXHIBITED, OR FURNISHED TO OTHERS NOR PHOTOGRAPHS TAKEN OF ANY ARTICLE FABRICATED OR ASSEMBLED FROM THE DRAWING WITHOUT THE CONSENT OF AFL.



**MATERIAL**  
ETP COPPER ALLOY 1/8 HARD ASTM B152

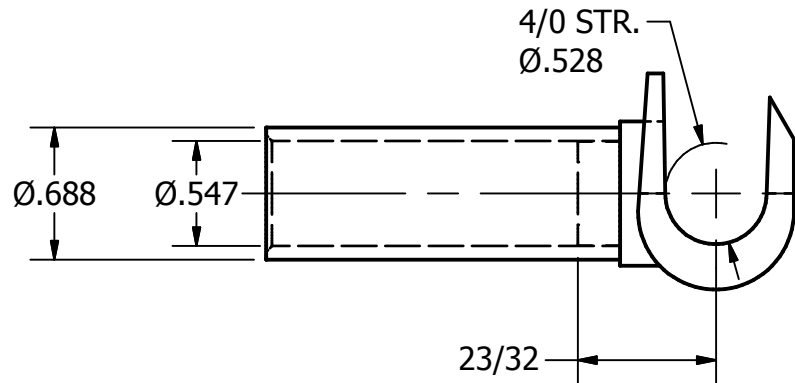
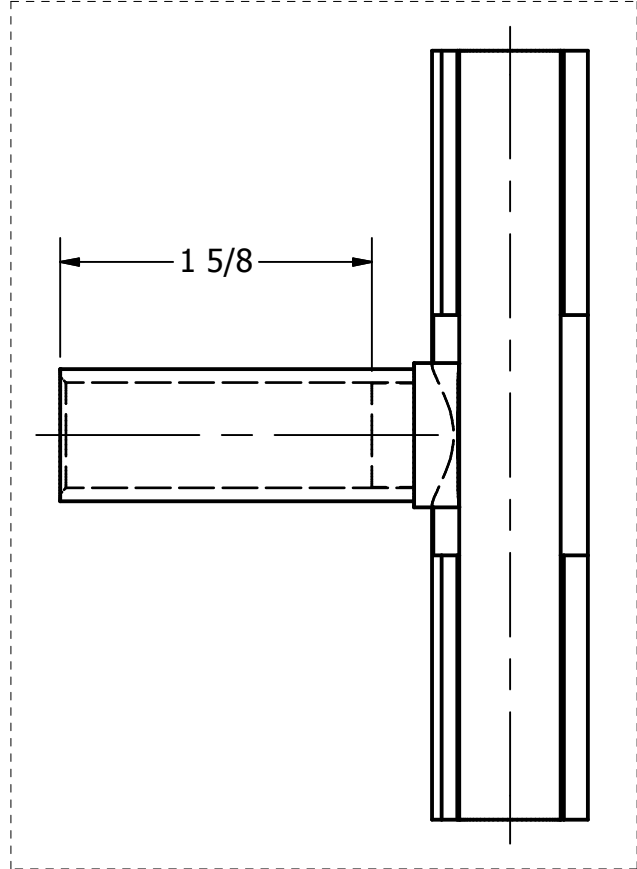
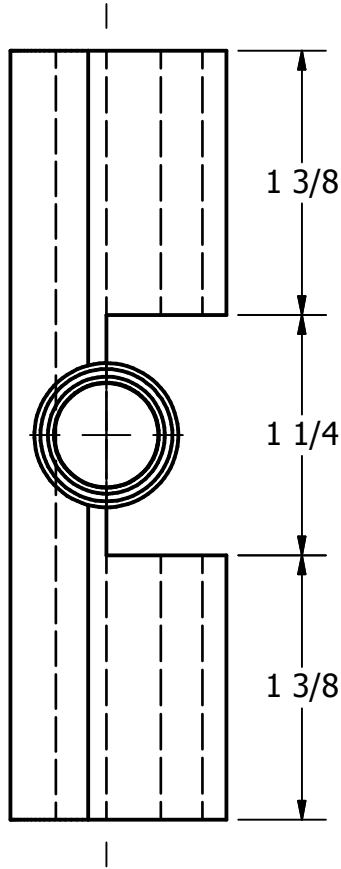
0.40 LB

LOCATION					CONTRACT NO		CUST / CONTR	
REVISIONS					DRN BY: ES DRN DATE: 4-7-81 CHK BY: JS CHK DATE: 4-7-81			
REV	DESCRIPTION	DATE	BY	APR	 CLAMP, AUXILIARY, 2/0 STR., COPPER			
2	REDRAWN IN INVENTOR	5-5-10	NF	EP				
					REV	AWC13		1 OF 1

ITEM NO

DWG NO

THIS DRAWING AND ALL INFORMATION ON IT IS THE PROPERTY OF AFL. IT IS CONFIDENTIAL AND IT IS GIVEN TO YOU FOR A LIMITED PURPOSE AND MUST BE RETURNED UPON REQUEST. NEITHER THIS DRAWING OR ANY PART OF IT NOR ANY INFORMATION CONCERNING IT MAY BE COPIED, EXHIBITED, OR FURNISHED TO OTHERS NOR PHOTOGRAPHS TAKEN OF ANY ARTICLE FABRICATED OR ASSEMBLED FROM THE DRAWING WITHOUT THE CONSENT OF AFL.



**MATERIAL**  
**PURE COPPER ALLOY**  
**ELECTRO-TIN PLATED**

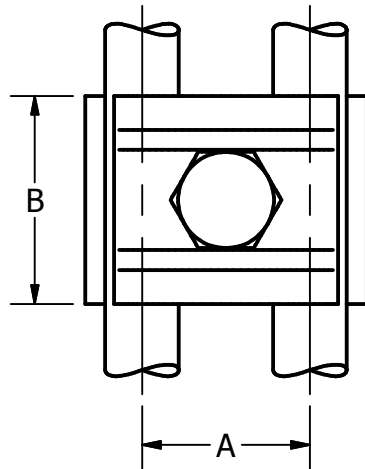
0.5 LB

LOCATION					CONTRACT NO		CUST / CONTR	
REVISIONS					DRN BY: NF			
REV	DESCRIPTION	DATE	BY	APR	DRN DATE: 4-28-10			
					CHK BY: EP		TEE CONNECTOR, MW, .528 DIA	
					CHK DATE: 4-28-10		REV 0	CST21-21
								1 OF 1

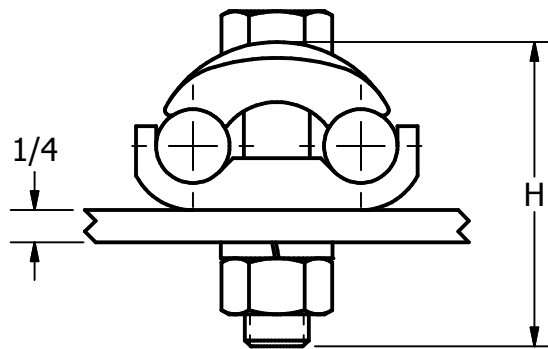
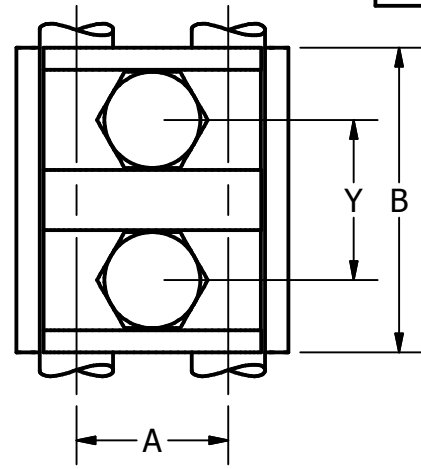
ITEM NO

DWG NO  
D-7179

TYPE GA



TYPE GAA



THIS DRAWING AND ALL INFORMATION ON IT IS THE PROPERTY OF AFL. IT IS CONFIDENTIAL AND IT IS GIVEN TO YOU FOR A LIMITED PURPOSE AND MUST BE RETURNED UPON REQUEST. NEITHER THIS DRAWING OR ANY PART OF IT NOR ANY INFORMATION CONCERNING IT MAY BE COPIED, EXHIBITED, OR FURNISHED TO OTHERS NOR PHOTOGRAPHS TAKEN OF ANY ARTICLE FABRICATED OR ASSEMBLED FROM THE DRAWING WITHOUT THE CONSENT OF AFL.

CABLE MIN.	CABLE MAX.	CATALOG NUMBER	A	B	H	W	Y	BOLT SIZE
#8 SOL.	#4 STR.	GA4	3/4	1 3/8	1 1/2	1 1/4	-	3/8
#4 SOL.	2/0 STR.	GA13	1	1 5/8	1 1/2	1 1/2	-	3/8
2/0 SOL.	250 MCM	GA25	1 1/4	1 3/4	2	2 1/4	-	1/2
300 MCM	500 MCM	GA50	1 1/2	2	2 1/4	2 1/2	-	1/2
550 MCM	750 MCM	GA75	1 3/4	2 3/8	2 3/4	3 1/4	-	5/8
800 MCM	1000 MCM	GA100	2	2 1/2	3	3 5/8	-	5/8
#8 SOL.	#4 STR.	GAA4	3/4	2	1 1/2	1 1/4	15/16	3/8
#4 SOL.	2/0 STR.	GAA13	1	2	1 3/4	1 1/2	1	3/8
2/0 SOL.	250 MCM	GAA25	1 1/4	2 1/2	2 1/4	2 1/4	1 1/4	1/2
300 MCM	500 MCM	GAA50	1 1/2	2 1/2	2 1/2	2 1/2	1 3/8	1/2
550 MCM	750 MCM	GAA75	1 3/4	3	2 3/4	3 1/4	1 9/16	5/8
800 MCM	1000 MCM	GAA100	2	3	3 1/4	3 5/8	1 9/16	5/8

**NOTE**  
FOR OTHER THAN 1/4" BAR, ADD "T" &  
THICKNESS OF BAR TO CATALOG NO.  
(EX. GA25-T5/8)

**MATERIAL**  
COPPER ALLOY  
BOLTS, NUTS AND L. WASHERS -  
SILICON BRONZE

LOCATION

CONTRACT NO

CUST / CONTR

## REVISIONS

REV	DESCRIPTION	DATE	BY	APR
1	REDRAWN IN INVENTOR	5-13-10	NF	EP

DRN BY:  
VC  
DRN DATE:  
5-7-92  
CHK BY:  
JS  
CHK DATE:  
5-8-92

**FAFL****DOSSERT®**

GROUND CLAMP

REV  
1

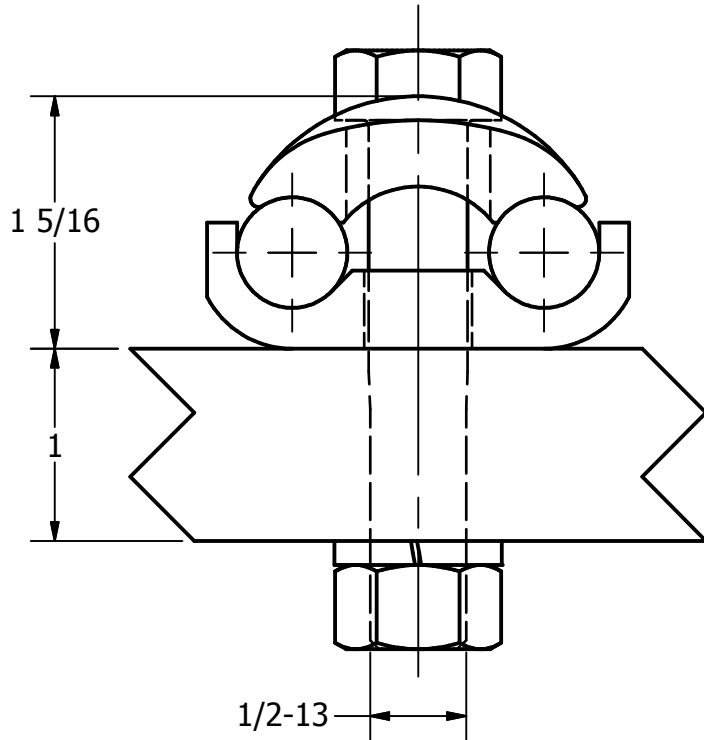
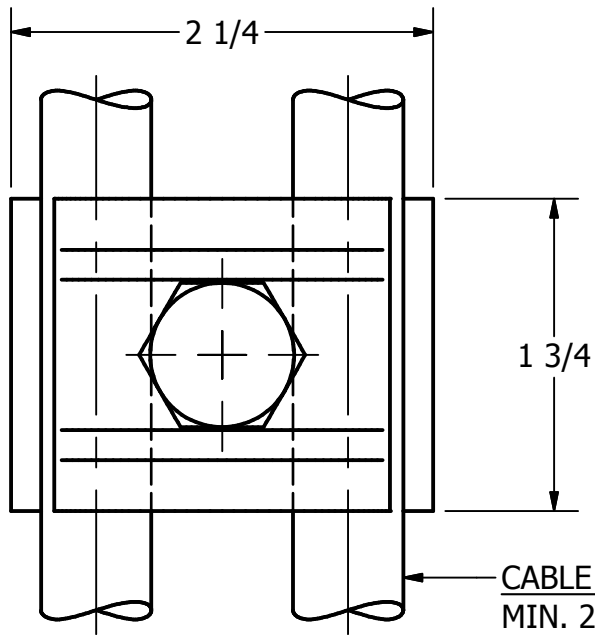
GA &amp; GAA SERIES

1 of 1

ITEM NO

DWG NO

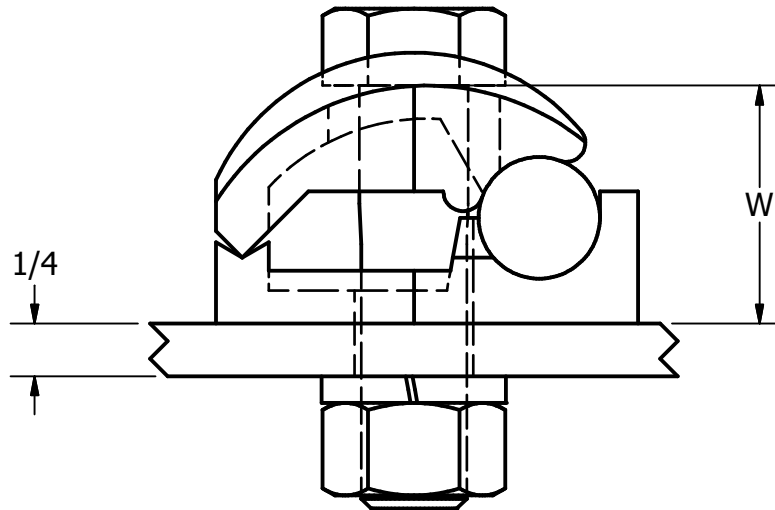
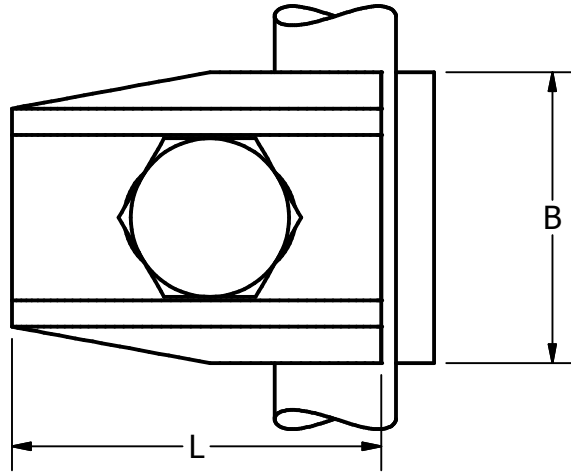
THIS DRAWING AND ALL INFORMATION ON IT IS THE PROPERTY OF AFL. IT IS CONFIDENTIAL AND IT IS GIVEN TO YOU FOR A LIMITED PURPOSE AND MUST BE RETURNED UPON REQUEST. NEITHER THIS DRAWING OR ANY PART OF IT NOR ANY INFORMATION CONCERNING IT MAY BE COPIED, EXHIBITED, OR FURNISHED TO OTHERS NOR PHOTOGRAPHS TAKEN OF ANY ARTICLE FABRICATED OR ASSEMBLED FROM THE DRAWING WITHOUT THE CONSENT OF AFL.



**MATERIAL**  
 CLAMP - COPPER ALLOY  
 BOLT, NUT AND L. WASHER - SILICON BRONZE

LOCATION					CONTRACT NO		CUST / CONTR	
REVISIONS								
REV	DESCRIPTION	DATE	BY	APR	CLAMP, GROUND, MW 250MCM, 1" THICK GRND			
					DRN BY: NF			
					DRN DATE: 4-28-10			
					CHK BY: EP			
					CHK DATE: 4-28-10			
					REV 0	GA25-T1		1 OF 1

ITEM NO

DWG NO  
D-2752

CABLE MIN.	CABLE MAX.	CATALOG NO.	B	L	W	BOLT SIZE
#8 SOL.	#4 STR.	GF4	1	1 3/8	7/8	3/8
#4 SOL.	2/0 STR.	GF13	1 1/8	1 15/32	1	3/8
2/0 SOL.	250 MCM	GF25	1 3/8	2 1/16	1 1/4	1/2
#4 SOL.	300 MCM	GF30	1 3/8	2 1/32	1 7/32	1/2
300 MCM	500 MCM	GF50	1 1/2	2 3/8	1 9/16	1/2
550 MCM	750 MCM	GF75	1 5/8	2 15/16	1 7/8	5/8
800 MCM	1000 MCM	GF100	1 3/4	3 3/16	2 1/8	5/8
#4 SOL.	2/0 STR.	GF13-50	1 3/8	1 3/4	1 1/16	1/2
#4 SOL.	300 MCM	GF30-62	1 5/8	2 9/32	1 3/8	5/8

**NOTE**

FOR OTHER THAN 1/4" BAR, ADD "T" & THICKNESS OF BAR TO CATALOG NO. (Ex. GF50-T5/8)

**MATERIAL**

COPPER ALLOY  
BOLT, NUT AND L. WASHER - SILICON BRONZE  
(ADD "GS" TO CATALOG NO. FOR GALV. STEEL HARDWARE, "SN" FOR ELECTRO TIN PLATED)

THIS DRAWING AND ALL INFORMATION ON IT IS THE PROPERTY OF AFL. IT IS CONFIDENTIAL AND IT IS GIVEN TO YOU FOR A LIMITED PURPOSE AND MUST BE RETURNED UPON REQUEST. NEITHER THIS DRAWING OR ANY PART OF IT NOR ANY INFORMATION CONCERNING IT MAY BE COPIED, EXHIBITED, OR FURNISHED TO OTHERS NOR PHOTOGRAPHS TAKEN OF ANY ARTICLE FABRICATED OR ASSEMBLED FROM THE DRAWING WITHOUT THE CONSENT OF AFL.

LOCATION

CONTRACT NO

CUST / CONTR

## REVISIONS

REV	DESCRIPTION	DATE	BY	APR
4	REDRAWN IN INVENTOR	5-11-10	NF	EP

DRN BY:  
FF  
DRN DATE:  
7-3-75  
CHK BY:  
JS  
CHK DATE:  
7-7-75

**FAFL****DOSSERT®**

GROUND CLAMP

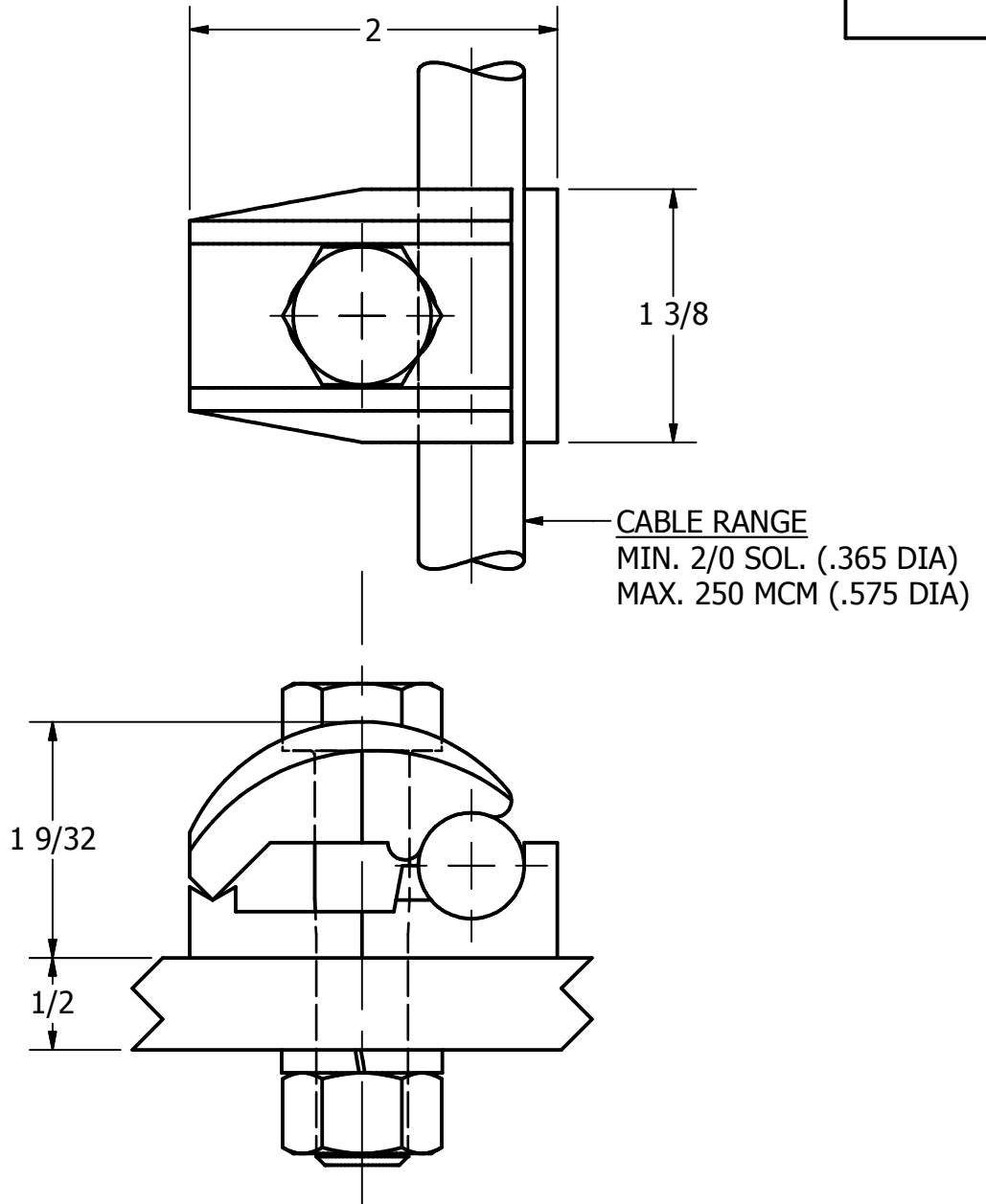
GF SERIES

1 OF 1

ITEM NO

DWG NO

THIS DRAWING AND ALL INFORMATION ON IT IS THE PROPERTY OF AFL. IT IS CONFIDENTIAL AND IT IS GIVEN TO YOU FOR A LIMITED PURPOSE AND MUST BE RETURNED UPON REQUEST. NEITHER THIS DRAWING OR ANY PART OF IT NOR ANY INFORMATION CONCERNING IT MAY BE COPIED, EXHIBITED, OR FURNISHED TO OTHERS NOR PHOTOGRAPHS TAKEN OF ANY ARTICLE FABRICATED OR ASSEMBLED FROM THE DRAWING WITHOUT THE CONSENT OF AFL.



**MATERIAL**  
 CLAMP - COPPER ALLOY  
 BOLT, NUT AND L. WASHER - SILICON BRONZE

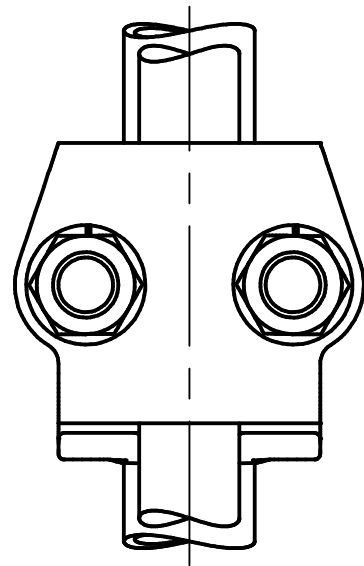
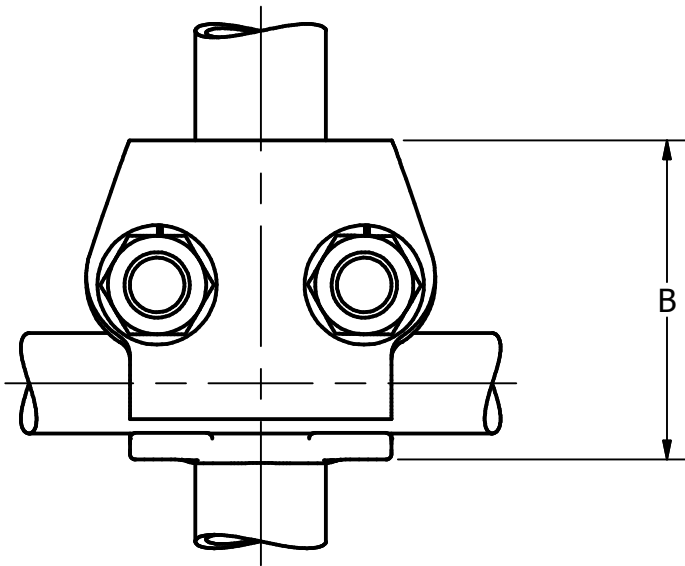
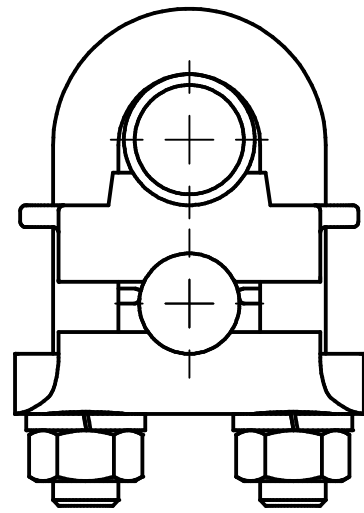
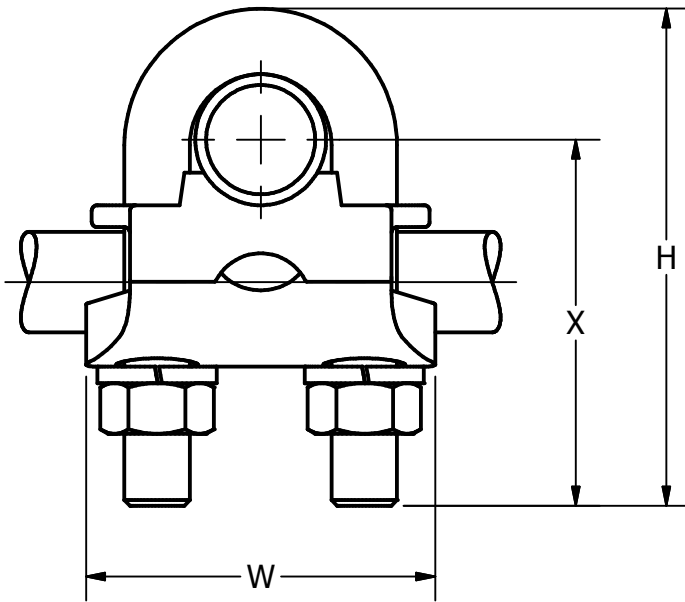
LOCATION					CONTRACT NO		CUST / CONTR	
REVISIONS							CLAMP, GROUND, MW 250MCM, 1/2" THICK GRND	
REV	DESCRIPTION	DATE	BY	APR				
					DRN BY: NF	REV	GF25-T1/2	
					DRN DATE: 4-28-10	0	1 OF 1	
					CHK BY: EP			
					CHK DATE: 4-28-10			

ITEM NO

DWG NO  
D-593

PERPENDICULAR MOUNTING

PARALLEL MOUNTING



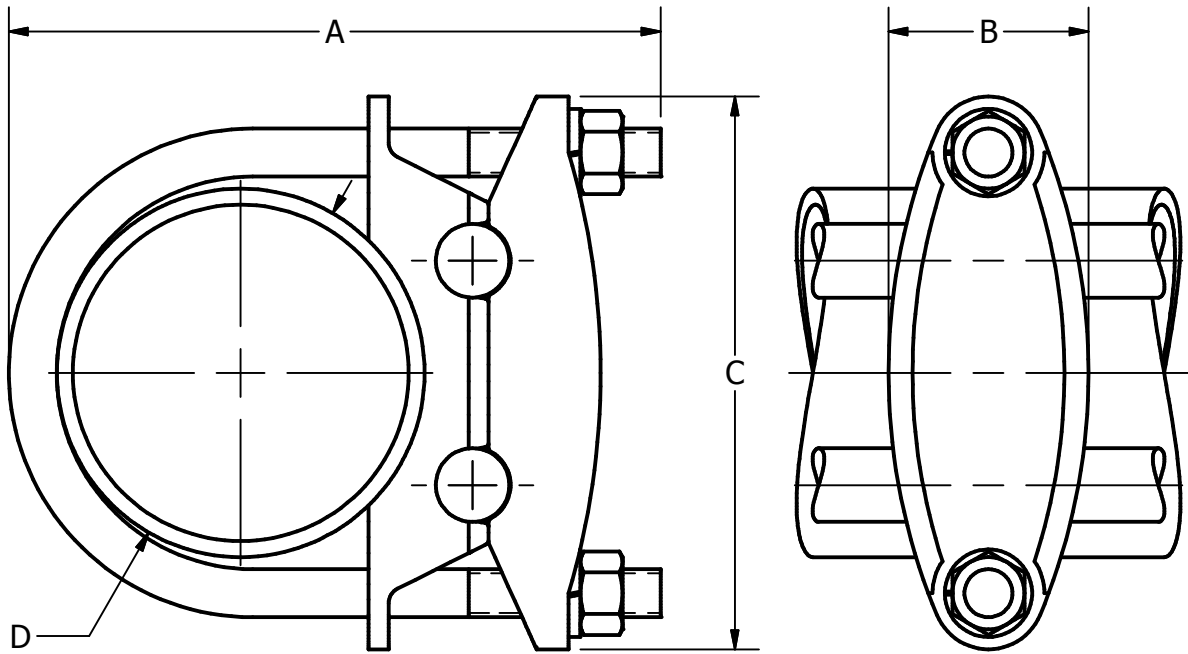
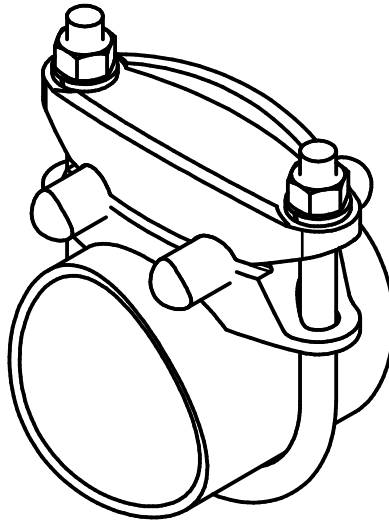
MATERIAL  
COPPER ALLOY  
U BOLT, NUTS AND L. WASHERS - SILICON BRONZE  
ADD SN TO CATALOG NO. FOR TIN PLATING

THIS DRAWING AND ALL INFORMATION ON IT IS THE PROPERTY OF AFL. IT IS CONFIDENTIAL AND IT IS GIVEN TO YOU FOR A LIMITED PURPOSE AND MUST BE RETURNED UPON REQUEST. NEITHER THIS DRAWING OR ANY PART OF IT NOR ANY INFORMATION CONCERNING IT MAY BE COPIED, EXHIBITED, OR FURNISHED TO OTHERS NOR PHOTOGRAPHS TAKEN OF ANY ARTICLE FABRICATED OR ASSEMBLED FROM THE DRAWING WITHOUT THE CONSENT OF AFL.

LOCATION					CONTRACT NO		CUST / CONTR	
REVISIONS								
REV	DESCRIPTION	DATE	BY	APR	GROUND CLAMP			
4	REDRAWN IN INVENTOR	5-11-10	NF	EP	GPC SERIES			
DRN BY: IP DRN DATE: 7-14-83 CHK BY: JS CHK DATE: 8-16-83					REV	4		1 OF 1

ITEM NO

DWG NO  
D-335



THIS DRAWING AND ALL INFORMATION ON IT IS THE PROPERTY OF AFL. IT IS CONFIDENTIAL AND IT IS GIVEN TO YOU FOR A LIMITED PURPOSE AND MUST BE RETURNED UPON REQUEST. NEITHER THIS DRAWING OR ANY PART OF IT NOR ANY INFORMATION CONCERNING IT MAY BE COPIED, EXHIBITED, OR FURNISHED TO OTHERS NOR PHOTOGRAPHS TAKEN OF ANY ARTICLE FABRICATED OR ASSEMBLED FROM THE DRAWING WITHOUT THE CONSENT OF AFL.

**MATERIAL**

BODY - COPPER ALLOY

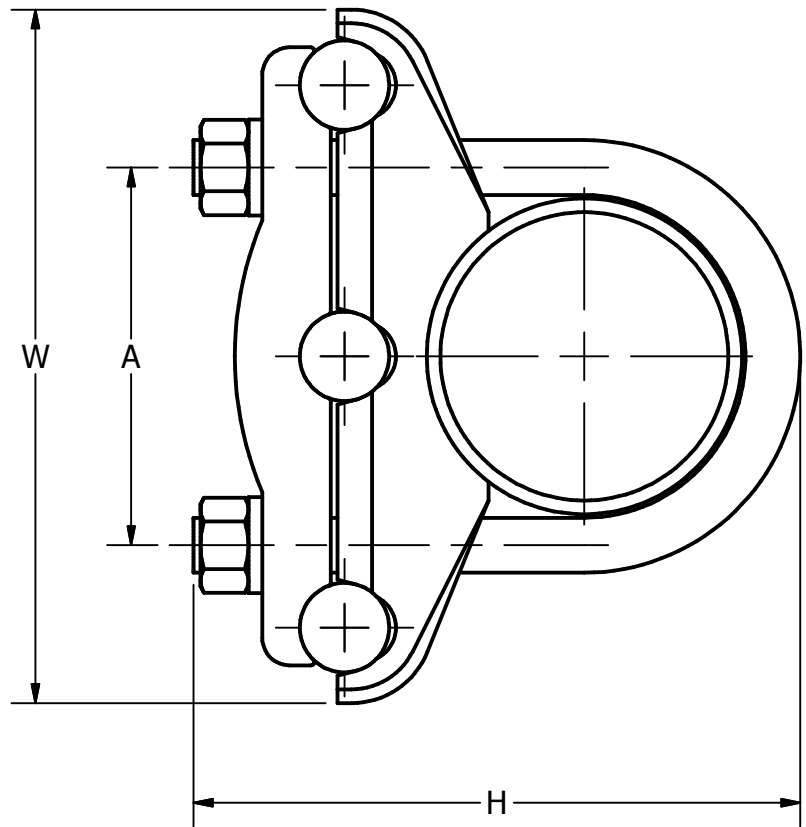
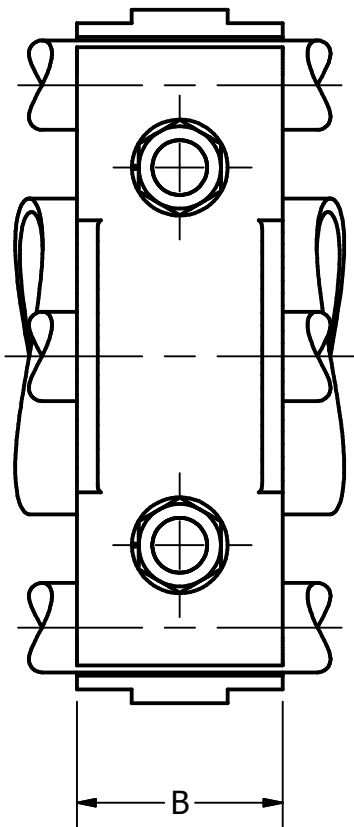
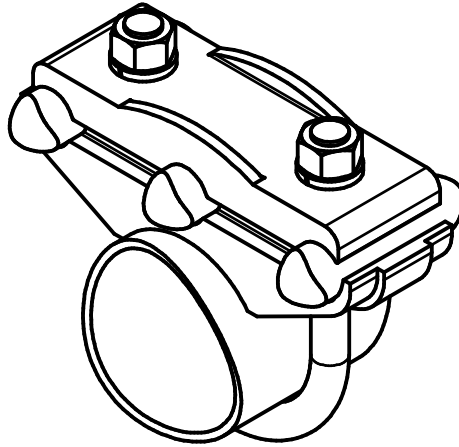
U-BOLTS, NUTS AND L. WASHERS - SILICON BRONZE  
ADD "HSN" TO CATALOG NO. FOR HOT TIN DIPPED,  
"SN" FOR ELECTRO TIN PLATED

LOCATION					CONTRACT NO		CUST / CONTR																										
<table border="1"> <thead> <tr> <th colspan="5">REVISIONS</th> </tr> <tr> <th>REV</th> <th>DESCRIPTION</th> <th>DATE</th> <th>BY</th> <th>APR</th> </tr> </thead> <tbody> <tr> <td>1</td> <td>REDRAWN IN INVENTOR</td> <td>5-13-10</td> <td>NF</td> <td>EP</td> </tr> <tr> <td> </td> <td> </td> <td> </td> <td> </td> <td> </td> </tr> <tr> <td> </td> <td> </td> <td> </td> <td> </td> <td> </td> </tr> </tbody> </table>					REVISIONS					REV	DESCRIPTION	DATE	BY	APR	1	REDRAWN IN INVENTOR	5-13-10	NF	EP											DRN BY: IP DRN DATE: 5-11-81 CHK BY: JS CHK DATE: 7-15-81			
REVISIONS																																	
REV	DESCRIPTION	DATE	BY	APR																													
1	REDRAWN IN INVENTOR	5-13-10	NF	EP																													
							GROUND CLAMP																										
					REV 1		GW SERIES																										
							1 OF 1																										




ITEM NO

DWG NO



THIS DRAWING AND ALL INFORMATION ON IT IS THE PROPERTY OF AFL. IT IS CONFIDENTIAL AND IT IS GIVEN TO YOU FOR A LIMITED PURPOSE AND MUST BE RETURNED UPON REQUEST. NEITHER THIS DRAWING OR ANY PART OF IT NOR ANY INFORMATION CONCERNING IT MAY BE COPIED, EXHIBITED, OR FURNISHED TO OTHERS NOR PHOTOGRAPHS TAKEN OF ANY ARTICLE FABRICATED OR ASSEMBLED FROM THE DRAWING WITHOUT THE CONSENT OF AFL.

**MATERIAL**  
CAST COPPER ALLOY  
U-BOLT, NUTS AND L. WASHERS - SILICON BRONZE

LOCATION					CONTRACT NO		CUST / CONTR																															
<table border="1"> <thead> <tr> <th colspan="5">REVISIONS</th> </tr> <tr> <th>REV</th> <th>DESCRIPTION</th> <th>DATE</th> <th>BY</th> <th>APR</th> </tr> </thead> <tbody> <tr><td> </td><td> </td><td> </td><td> </td><td> </td></tr> <tr><td> </td><td> </td><td> </td><td> </td><td> </td></tr> <tr><td> </td><td> </td><td> </td><td> </td><td> </td></tr> <tr><td> </td><td> </td><td> </td><td> </td><td> </td></tr> </tbody> </table>					REVISIONS					REV	DESCRIPTION	DATE	BY	APR																					DRN BY: NF DRN DATE: 5-20-10 CHK BY: EP CHK DATE: 5-20-10			
REVISIONS																																						
REV	DESCRIPTION	DATE	BY	APR																																		
					REV 0		GROUND CLAMP																															
							GZ SERIES																															
							1 of 1																															