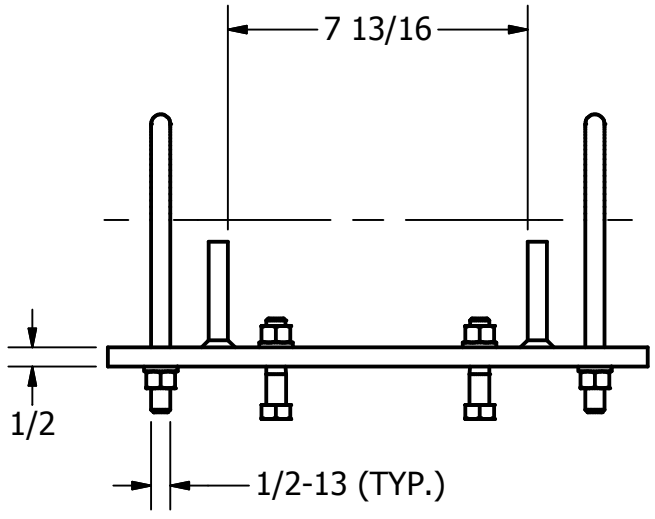
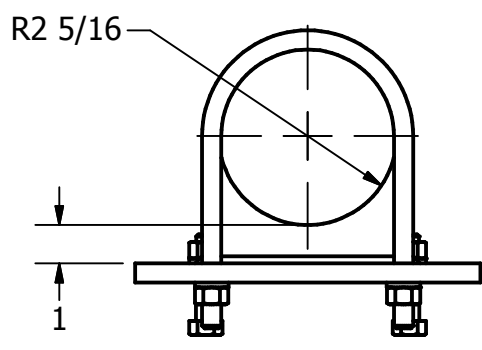
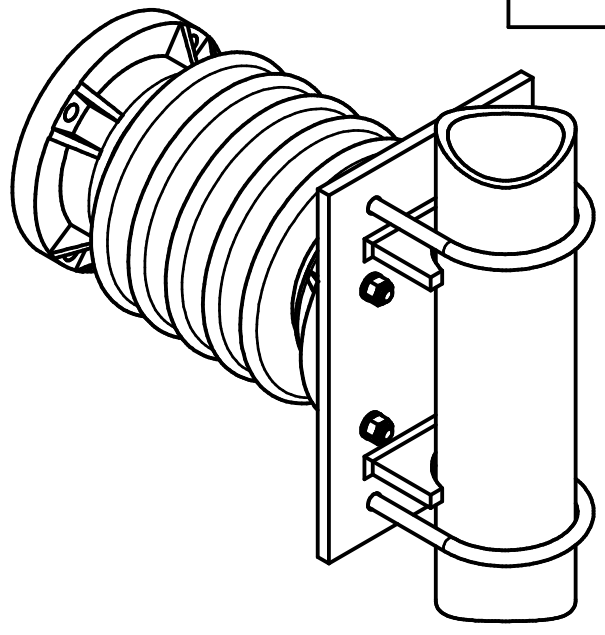
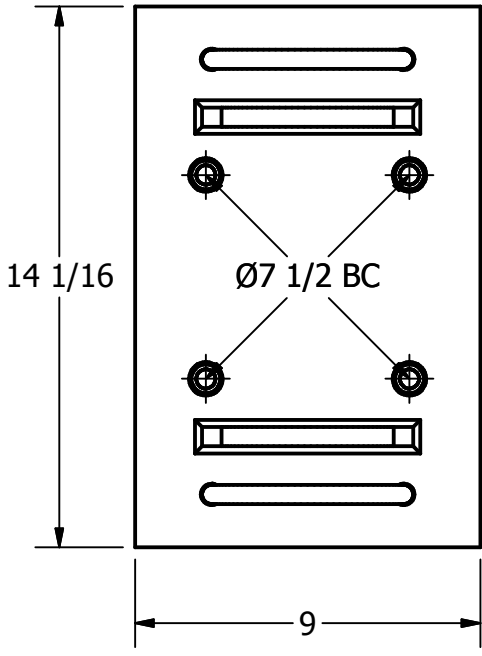


ITEM NO

DWG NO

THIS DRAWING AND ALL INFORMATION ON IT IS THE PROPERTY OF AFL. IT IS CONFIDENTIAL AND IT IS GIVEN TO YOU FOR A LIMITED PURPOSE AND MUST BE RETURNED UPON REQUEST. NEITHER THIS DRAWING OR ANY PART OF IT NOR ANY INFORMATION CONCERNING IT MAY BE COPIED, EXHIBITED, OR FURNISHED TO OTHERS NOR PHOTOGRAPHS TAKEN OF ANY ARTICLE FABRICATED OR ASSEMBLED FROM THE DRAWING WITHOUT THE CONSENT OF AFL.



MATERIAL
 CARBON STEEL ASTM A36
 GALVANIZED TO ASTM A123
 HARDWARE - GALVANIZED STEEL

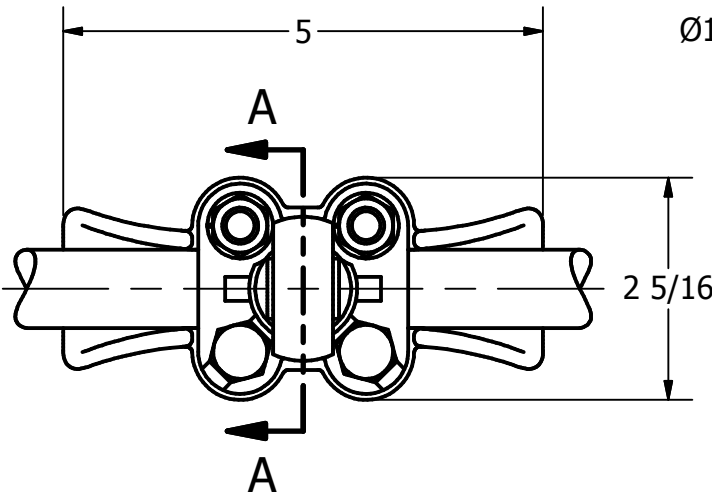
23 LB

LOCATION					CONTRACT NO		CUST / CONTR	
REVISIONS					<div style="display: flex; justify-content: space-between; align-items: center;"> </div> <p style="text-align: center; margin-top: 10px;">MESSENGER SUPPORT SADDLE</p>			
REV	DESCRIPTION	DATE	BY	APR				
					<div style="display: flex; justify-content: space-between; align-items: center;"> DRN BY: NF REV 0 </div> <div style="display: flex; justify-content: space-between; align-items: center;"> DRN DATE: 5-7-10 MSSA400-14-U </div> <div style="display: flex; justify-content: space-between; align-items: center;"> CHK BY: EP 1 OF 1 </div> <div style="display: flex; justify-content: space-between; align-items: center;"> CHK DATE: 5-7-10 </div>			

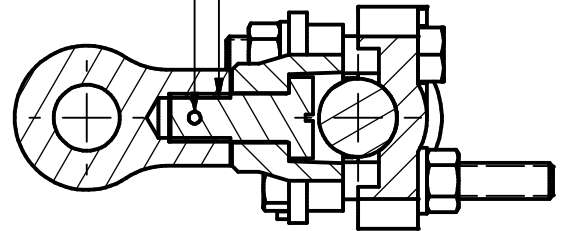
ITEM NO

DWG NO
B-6765

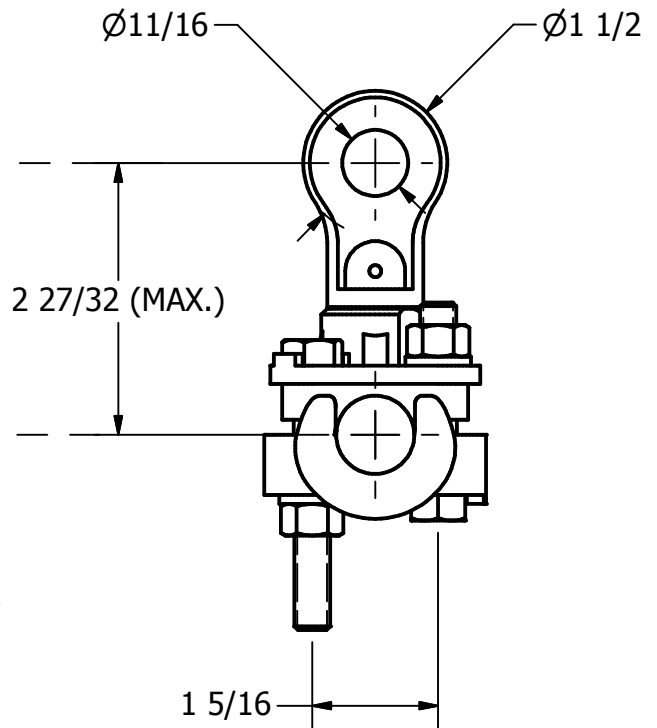
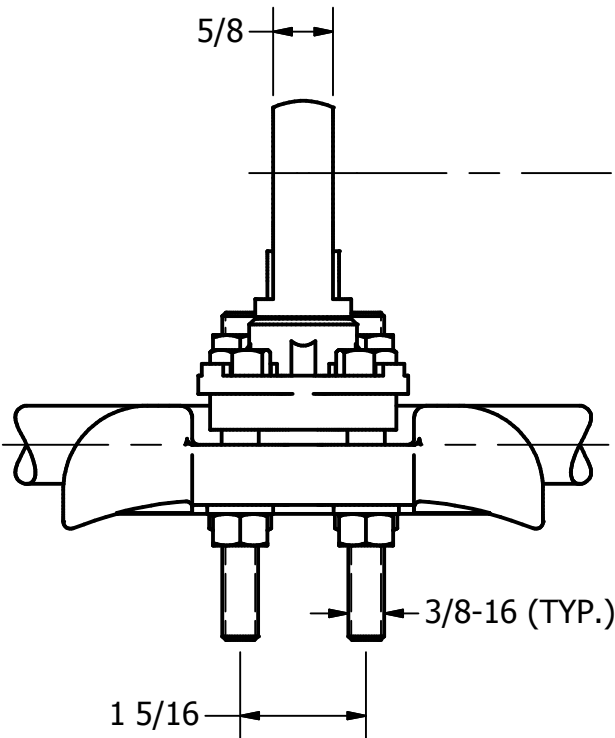
THIS DRAWING AND ALL INFORMATION ON IT IS THE PROPERTY OF AFL. IT IS CONFIDENTIAL AND IT IS GIVEN TO YOU FOR A LIMITED PURPOSE AND MUST BE RETURNED UPON REQUEST. NEITHER THIS DRAWING OR ANY PART OF IT NOR ANY INFORMATION CONCERNING IT MAY BE COPIED, EXHIBITED, OR FURNISHED TO OTHERS NOR PHOTOGRAPHS TAKEN OF ANY ARTICLE FABRICATED OR ASSEMBLED FROM THE DRAWING WITHOUT THE CONSENT OF AFL.



Ø1/8 ST. STEEL DOWEL PIN
1/2-13 DURONZE STUD



SECTION A-A



CABLE RANGE
MIN. 250 MCM (.575 DIA)
MAX. 500 MCM (.814 DIA)

MATERIAL
CLAMP - ALUMINUM BRONZE ASTM B30
BOLTS, NUTS AND L. WASHERS - SILICON BRONZE

LOCATION				CONTRACT NO		CUST / CONTR	
REVISIONS				DRN BY: ES			
REV	DESCRIPTION	DATE	BY	APR	DRN DATE: 7-23-85		
4	REDRAWN IN INVENTOR	4-28-10	NF	EP	CHK BY: JS		
					CHK DATE: 7-26-85		
				REV	MSSC821-63		1 OF 1
				4			



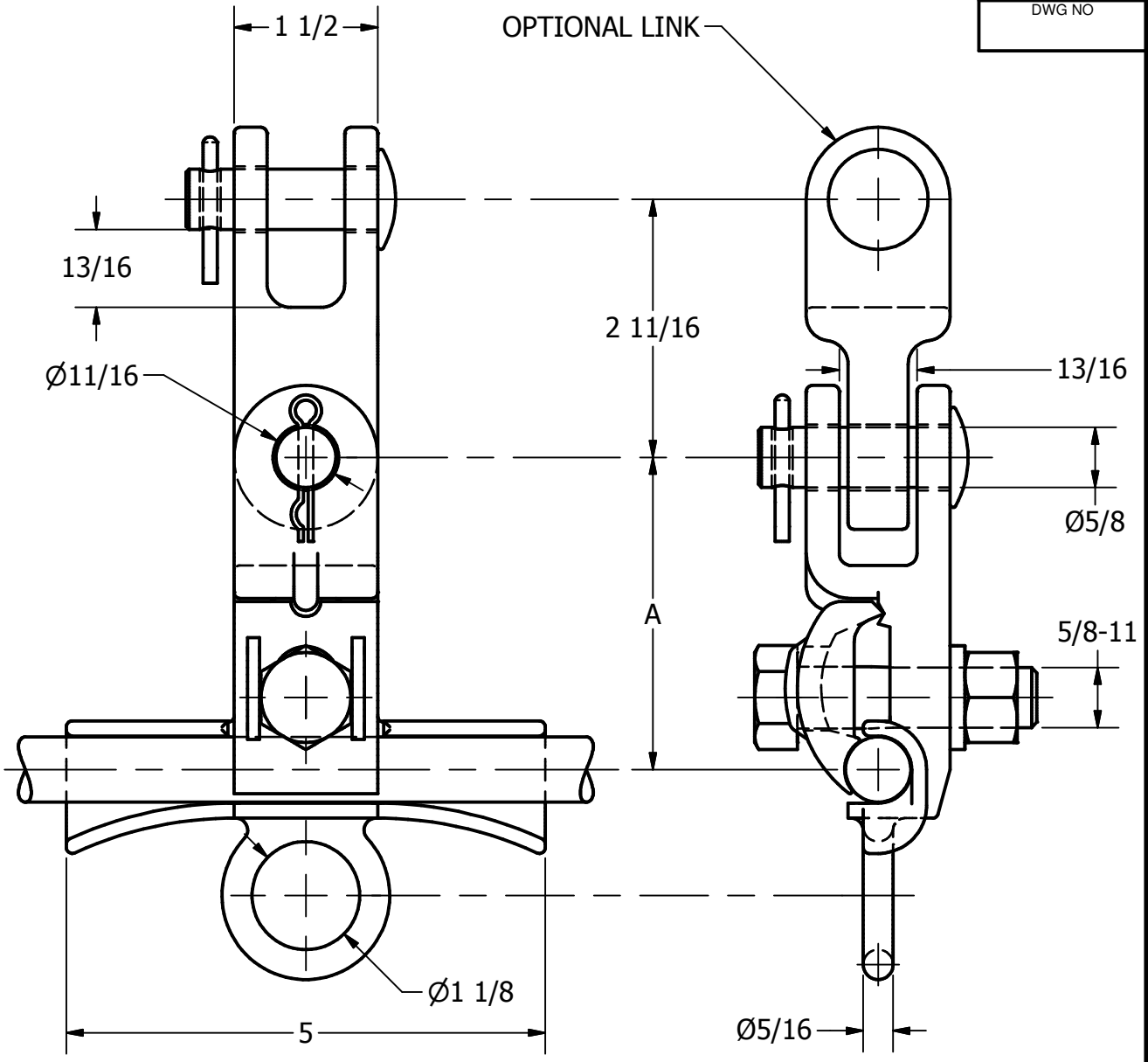
MESSENGER SWIVEL SUSPENSION CLAMP

MSSC821-63

ITEM NO

DWG NO

THIS DRAWING AND ALL INFORMATION ON IT IS THE PROPERTY OF AFL. IT IS CONFIDENTIAL AND IT IS GIVEN TO YOU FOR A LIMITED PURPOSE AND MUST BE RETURNED UPON REQUEST. NEITHER THIS DRAWING OR ANY PART OF IT NOR ANY INFORMATION CONCERNING IT MAY BE COPIED, EXHIBITED, OR FURNISHED TO OTHERS NOR PHOTOGRAPHS TAKEN OF ANY ARTICLE FABRICATED OR ASSEMBLED FROM THE DRAWING WITHOUT THE CONSENT OF AFL.



CATALOG NO.	CABLE MIN. DIA.	CABLE MAX. DIA.	DIM. "A"
SHBS700-63-CE	.375	.700	3 1/4
SHBS850-63-CE	.570	.850	3 11/32

MATERIAL
 CLAMP - ALUMINUM BRONZE ASTM B30
 BOLT, NUT AND L. WASHER - SILICON BRONZE
 CLEVIS PIN(S) - GALVANIZED STEEL
 COTTER KEY(S) - STAINLESS STEEL #304

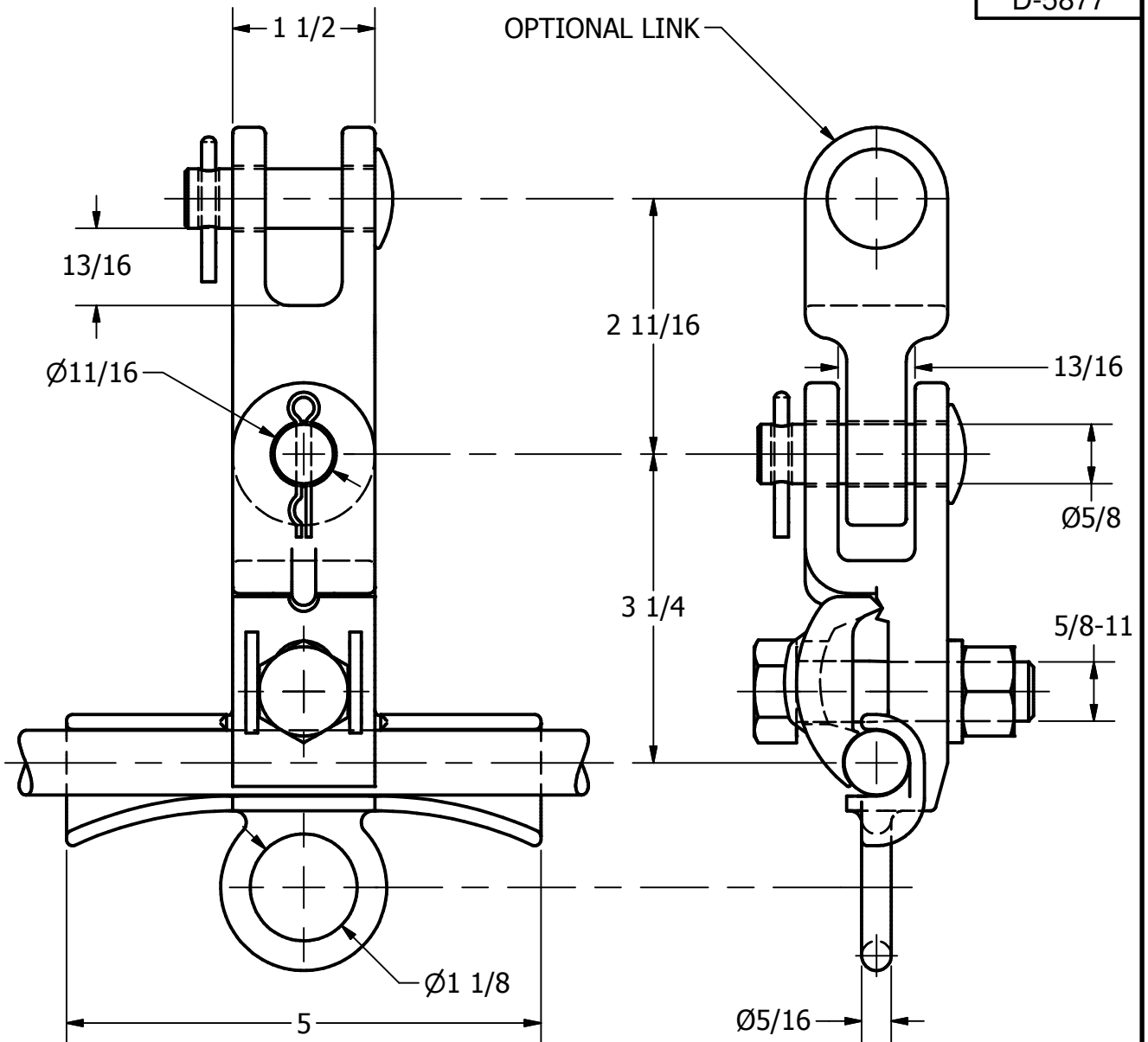
2.3/3.5 LB

LOCATION				CONTRACT NO		CUST / CONTR	
REVISIONS							
REV	DESCRIPTION	DATE	BY	APR	CLAMP, SUSPENSION, MW, SERIES		
					SHBS-63-CE SERIES		
DRN BY: NF DRN DATE: 5-5-10 CHK BY: EP CHK DATE: 5-5-10				REV	0		1 OF 1

ITEM NO

DWG NO
D-5877

THIS DRAWING AND ALL INFORMATION ON IT IS THE PROPERTY OF AFL. IT IS CONFIDENTIAL AND IT IS GIVEN TO YOU FOR A LIMITED PURPOSE AND MUST BE RETURNED UPON REQUEST. NEITHER THIS DRAWING OR ANY PART OF IT NOR ANY INFORMATION CONCERNING IT MAY BE COPIED, EXHIBITED, OR FURNISHED TO OTHERS NOR PHOTOGRAPHS TAKEN OF ANY ARTICLE FABRICATED OR ASSEMBLED FROM THE DRAWING WITHOUT THE CONSENT OF AFL.



CABLE RANGE
MIN. .375 DIA
MAX. .700 DIA

MATERIAL
CLAMP - ALUMINUM BRONZE ASTM B30
BOLT, NUT AND L. WASHER - SILICON BRONZE
CLEVIS PIN(S) - GALVANIZED STEEL
COTTER KEY(S) - STAINLESS STEEL #304

2.3/3.5 LB

LOCATION				CONTRACT NO		CUST / CONTR	
REVISIONS				DRN BY: RL			
REV	DESCRIPTION	DATE	BY	APR	DRN DATE: 8-19-82		
6	REDRAWN IN INVENTOR	4-29-10	NF	EP	CHK BY: JS		
					CHK DATE: 8-19-82		
				REV	SHBS700-63-CE		1 OF 1
				6			

FAFL

DOSSERT®

CLAMP, SUSPENSION, MW .375-.700 DIA

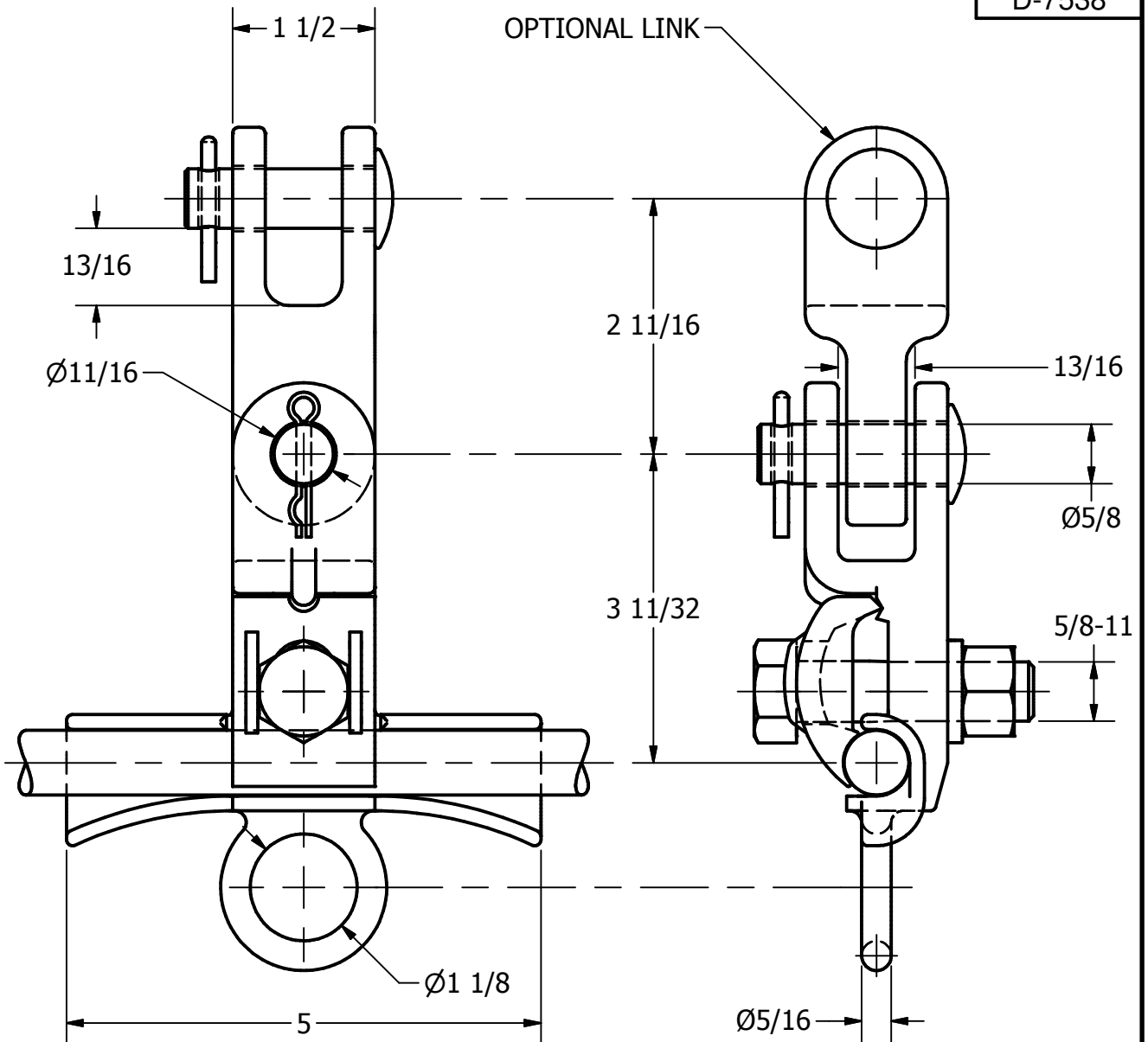
SHBS700-63-CE

1 OF 1

ITEM NO

DWG NO
D-7538

THIS DRAWING AND ALL INFORMATION ON IT IS THE PROPERTY OF AFL. IT IS CONFIDENTIAL AND IT IS GIVEN TO YOU FOR A LIMITED PURPOSE AND MUST BE RETURNED UPON REQUEST. NEITHER THIS DRAWING OR ANY PART OF IT NOR ANY INFORMATION CONCERNING IT MAY BE COPIED, EXHIBITED, OR FURNISHED TO OTHERS NOR PHOTOGRAPHS TAKEN OF ANY ARTICLE FABRICATED OR ASSEMBLED FROM THE DRAWING WITHOUT THE CONSENT OF AFL.



CABLE RANGE
MIN. .570 DIA
MAX. .850 DIA

MATERIAL
CLAMP - ALUMINUM BRONZE ASTM B30
BOLT, NUT AND L. WASHER - SILICON BRONZE
CLEVIS PIN(S) - GALVANIZED STEEL
COTTER KEY(S) - STAINLESS STEEL #304

2.3/3.5 LB

LOCATION

CONTRACT NO

CUST / CONTR

REVISIONS

REV	DESCRIPTION	DATE	BY	APR
1	REDRAWN IN INVENTOR	5-5-10	NF	EP

DRN BY:
ET
DRN DATE:
10-1-96
CHK BY:
-
CHK DATE:
-

FAFL

DOSSERT®

CLAMP, SUSPENSION, MW .570-.850 DIA

REV
1

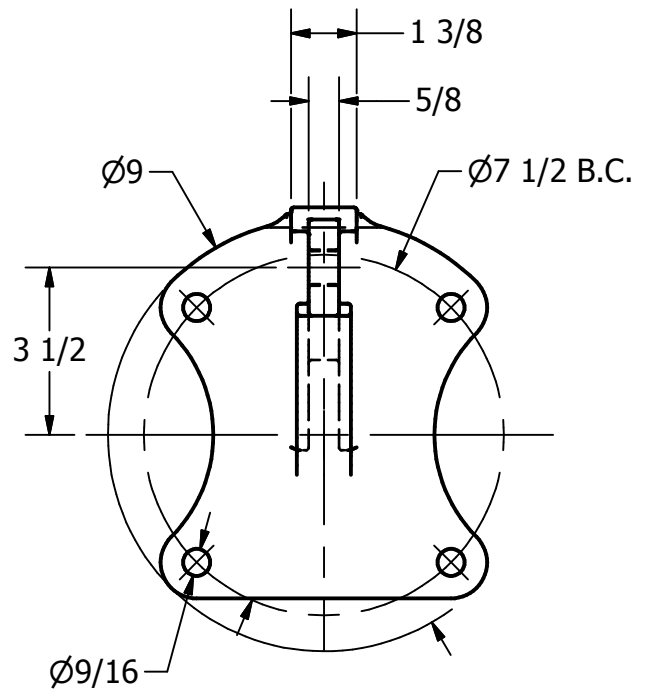
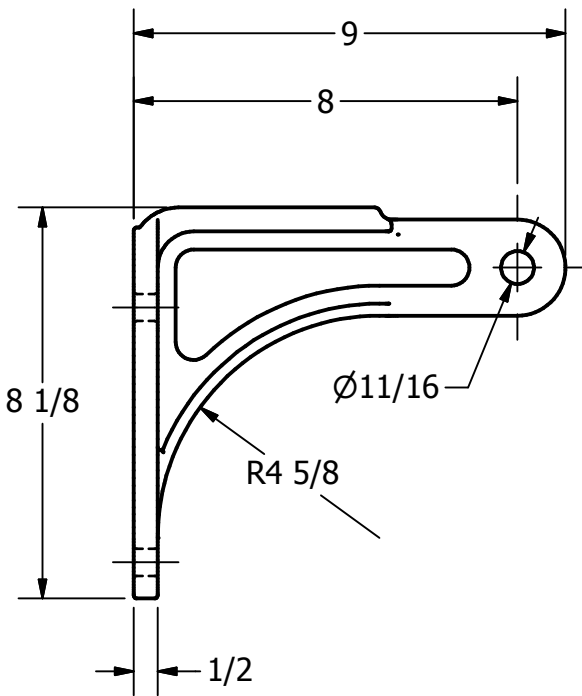
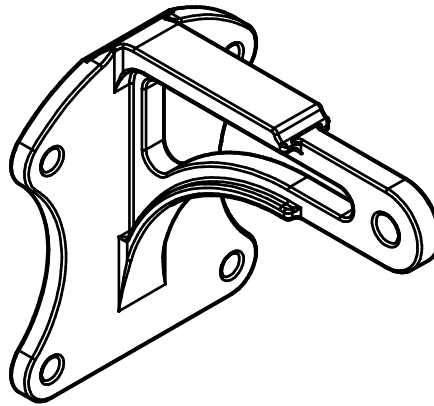
SHBS850-63-CE

1 OF 1

ITEM NO

DWG NO

THIS DRAWING AND ALL INFORMATION ON IT IS THE PROPERTY OF AFL. IT IS CONFIDENTIAL AND IT IS GIVEN TO YOU FOR A LIMITED PURPOSE AND MUST BE RETURNED UPON REQUEST. NEITHER THIS DRAWING OR ANY PART OF IT NOR ANY INFORMATION CONCERNING IT MAY BE COPIED, EXHIBITED, OR FURNISHED TO OTHERS NOR PHOTOGRAPHS TAKEN OF ANY ARTICLE FABRICATED OR ASSEMBLED FROM THE DRAWING WITHOUT THE CONSENT OF AFL.



MATERIAL

ALUMINUM BRONZE ASTM B-30, B-148

T.S. 90,000 PSI

MOUNTING HARDWARE

STAINLESS STEEL, (4) 1/2-13 X 1 3/4 HEX HD BOLTS, NUTS, AND L-WASHERS

SCALE 1 / 4

LOCATION

CONTRACT NO

CUST / CONTR

REVISIONS

REV	DESCRIPTION	DATE	BY	APR

DRN BY: SK
 DRN DATE: 9-11-09
 CHK BY:

CHK DATE:



JUT SUPPORT, FOR MESSENGER SUSPENSION

REV 0

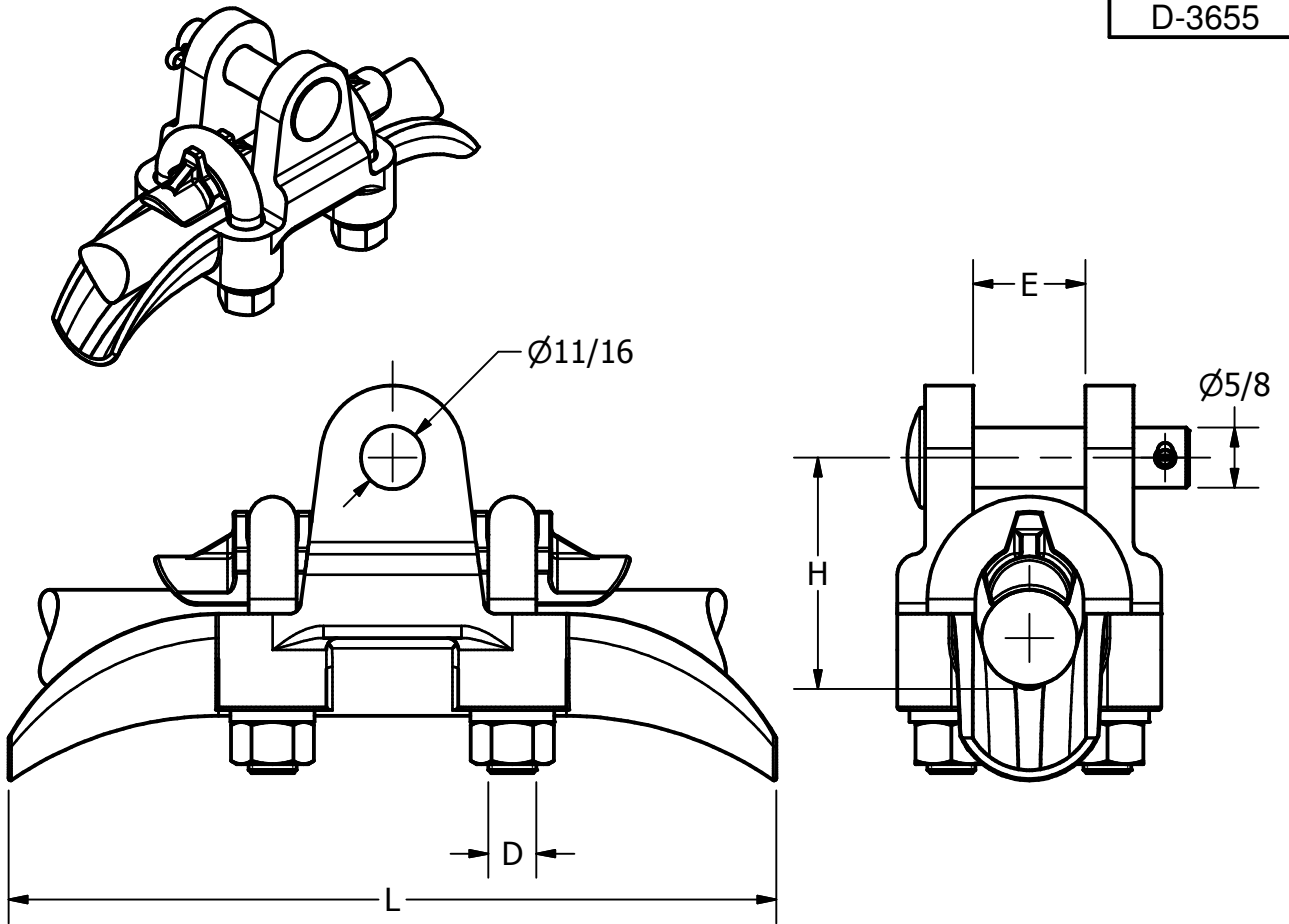
SJMI-7.5-7.5-63

1 OF 1

ITEM NO

DWG NO
D-3655

THIS DRAWING AND ALL INFORMATION ON IT IS THE PROPERTY OF AFL. IT IS CONFIDENTIAL AND IT IS GIVEN TO YOU FOR A LIMITED PURPOSE AND MUST BE RETURNED UPON REQUEST. NEITHER THIS DRAWING OR ANY PART OF IT NOR ANY INFORMATION CONCERNING IT MAY BE COPIED, EXHIBITED, OR FURNISHED TO OTHERS NOR PHOTOGRAPHS TAKEN OF ANY ARTICLE FABRICATED OR ASSEMBLED FROM THE DRAWING WITHOUT THE CONSENT OF AFL.



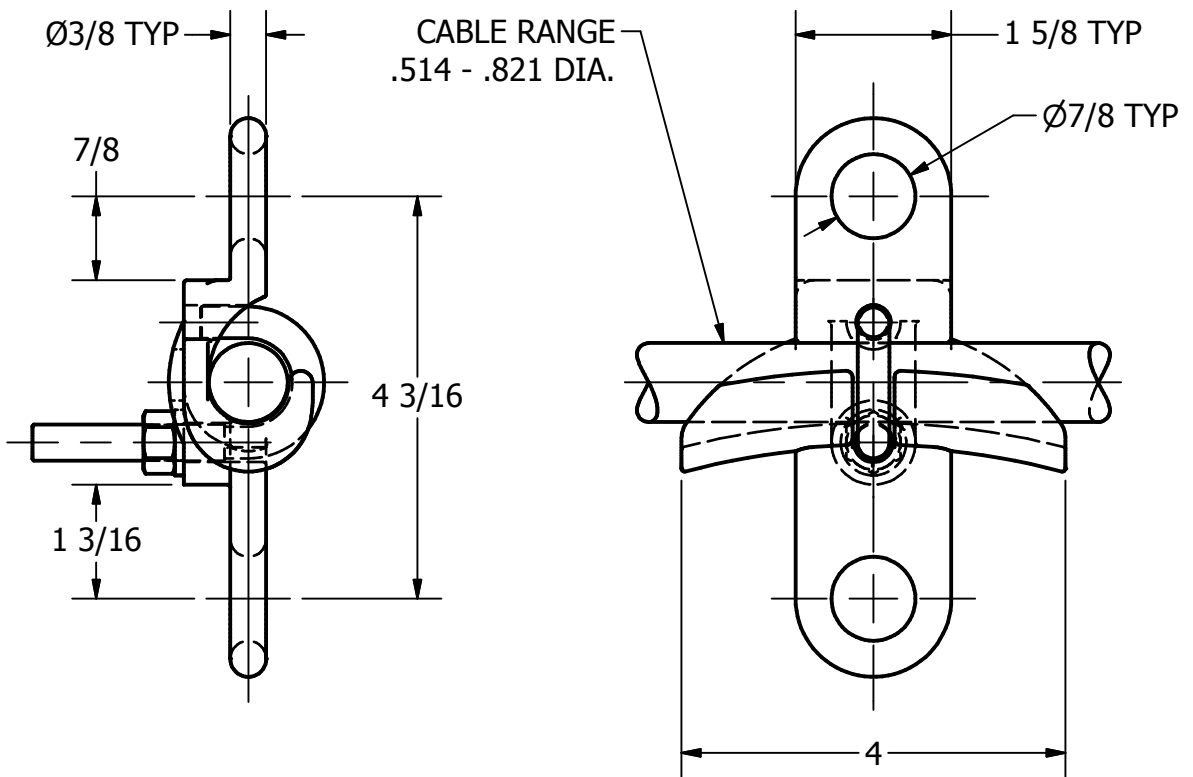
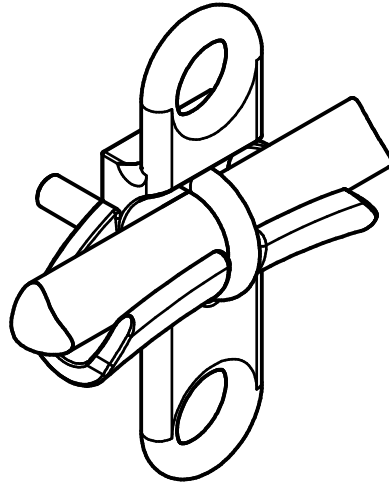
CATALOG #	CONDUCTOR SIZE	L	H	E	D
SU46	0.12-0.46	5 3/4	2 1/8	0.56	3/8-16
SU60	0.20-0.60	6 3/4	2 1/4	0.60	3/8-16
SU100	0.46-1.00	8	2 3/8	1.25	1/2-13
SU125	0.919-1.289	8 3/4	2 9/16	1.50	1/2-13

MATERIAL:
 ALUMINUM BRONZE ASTM B30.
 U-BOLTS, NUTS AND
 LOCK WASHERS-SILICON BRONZE
 CLEVIS PIN-GALV STEEL
 COTTER KEY-ST STEEL

LOCATION				CONTRACT NO		CUST / CONTR	
REVISIONS				DRN BY: ES DRN DATE: 4-17-68 CHK BY: HJ CHK DATE: 4-17-68			
REV	DESCRIPTION	DATE	BY	APR	FAFL DOSSERT® CLAMP, SUSPENSION		
2	RE-DRAWN IN INVENTOR	3-2-10	LK	EP			
					REV	SU-SERIES	
					2	1 OF 1	

ITEM NO

DWG NO
D-5055



MATERIAL
ALUMINUM BRONZE
(MIN YIELD STRENGTH 30,000 PSI)
J-BOLT, NUT, AND L.WASHER - EVERDUR

MAX WORKING LOAD 5900 LBS

THIS DRAWING AND ALL INFORMATION ON IT IS THE PROPERTY OF AFL. IT IS CONFIDENTIAL AND IT IS GIVEN TO YOU FOR A LIMITED PURPOSE AND MUST BE RETURNED UPON REQUEST. NEITHER THIS DRAWING OR ANY PART OF IT NOR ANY INFORMATION CONCERNING IT MAY BE COPIED, EXHIBITED, OR FURNISHED TO OTHERS NOR PHOTOGRAPHS TAKEN OF ANY ARTICLE FABRICATED OR ASSEMBLED FROM THE DRAWING WITHOUT THE CONSENT OF AFL.

LOCATION					CONTRACT NO		CUST / CONTR	
REVISIONS					DRN BY: ES DRN DATE: 8-16-78 CHK BY: JS CHK DATE: 8-16-78			
REV	DESCRIPTION	DATE	BY	APR	FAFL DOSSERT® CONNECTOR, SUSPENSION, .514-.821 DIA.			
6	RE-DRAWN IN INVENTOR	10-13-09	BH	EP				
					REV	SUJS821-63		
					6	1 OF 1		