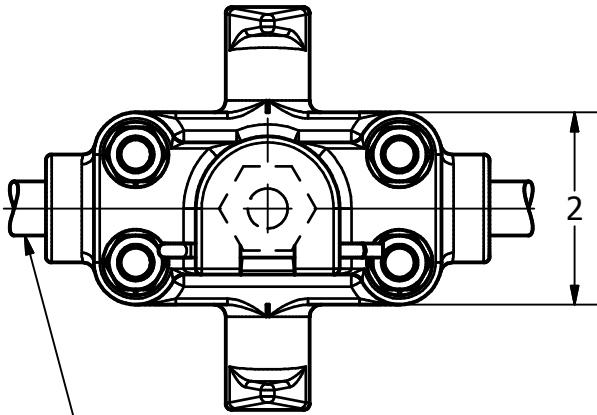
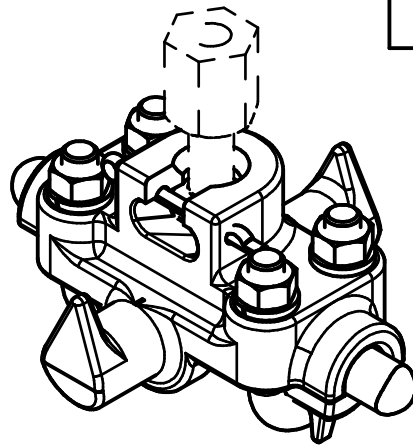


ITEM NO

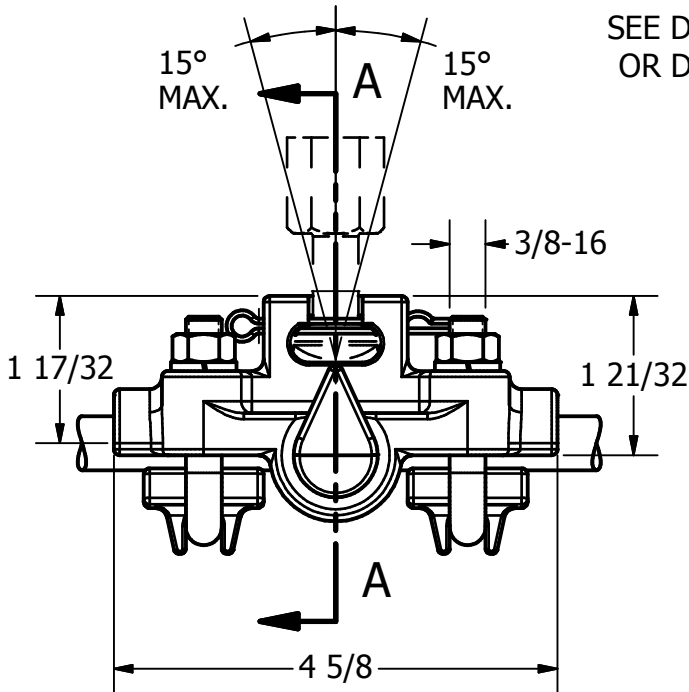
DWG NO  
B-7022



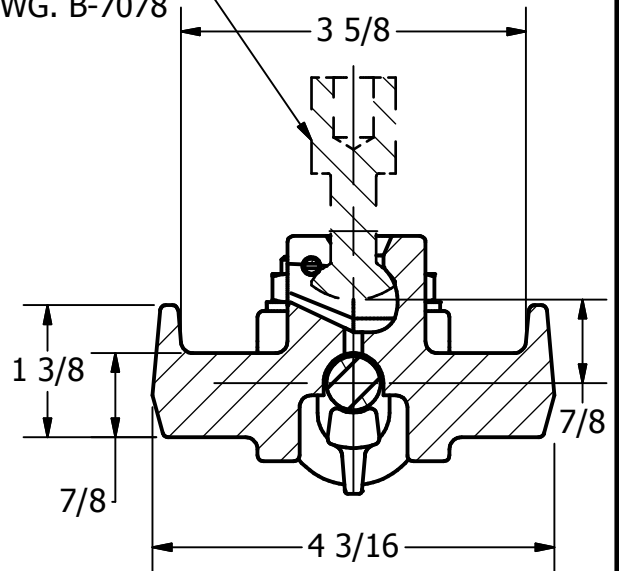
9/16 D. (19 STRDS #9) .572D  
COPPERWELD WIRE



THIS DRAWING AND ALL INFORMATION ON IT IS THE PROPERTY OF AFL. IT IS CONFIDENTIAL AND IT IS GIVEN TO YOU FOR A LIMITED PURPOSE AND MUST BE RETURNED UPON REQUEST. NEITHER THIS DRAWING OR ANY PART OF IT NOR ANY INFORMATION CONCERNING IT MAY BE COPIED, EXHIBITED, OR FURNISHED TO OTHERS NOR PHOTOGRAPHS TAKEN OF ANY ARTICLE FABRICATED OR ASSEMBLED FROM THE DRAWING WITHOUT THE CONSENT OF AFL.



SEE DWG. C-2618  
OR DWG. B-7078



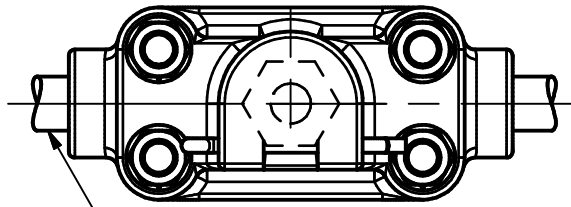
SECTION A-A

**MATERIAL:**  
ALUMINUM BRONZE ASTM B30.  
U-BOLTS, NUTS AND  
LOCK WASHERS-SILICON BRONZE  
COTTER KEY-ST STEEL

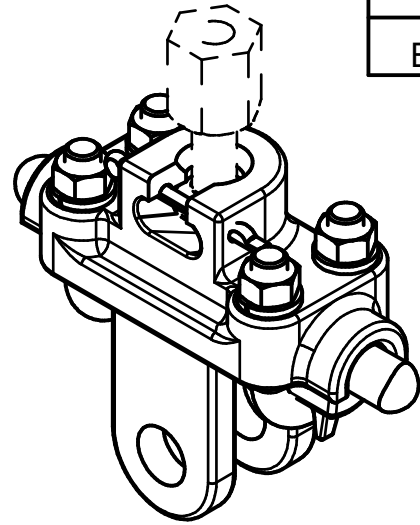
LOCATION				CONTRACT NO		CUST / CONTR	
REVISIONS				DRN BY: CG DRN DATE: 3-3-87 CHK BY: HJ CHK DATE: 3-3-87			
REV	DESCRIPTION	DATE	BY	APR	<b>FAFL DOSSERT®</b> CLAMP, SWIVEL, BODY SPAN		
4	RE-DRAWN IN NVENTOR	3-2-10	LK	EP			
					REV	BSSC57	
					4	1 of 1	

ITEM NO

DWG NO  
B-7705

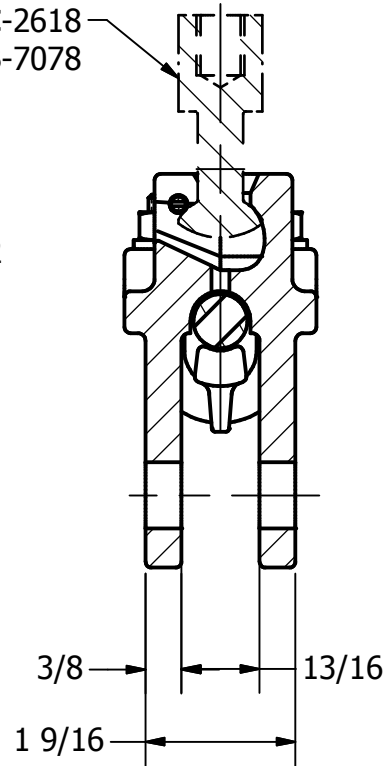
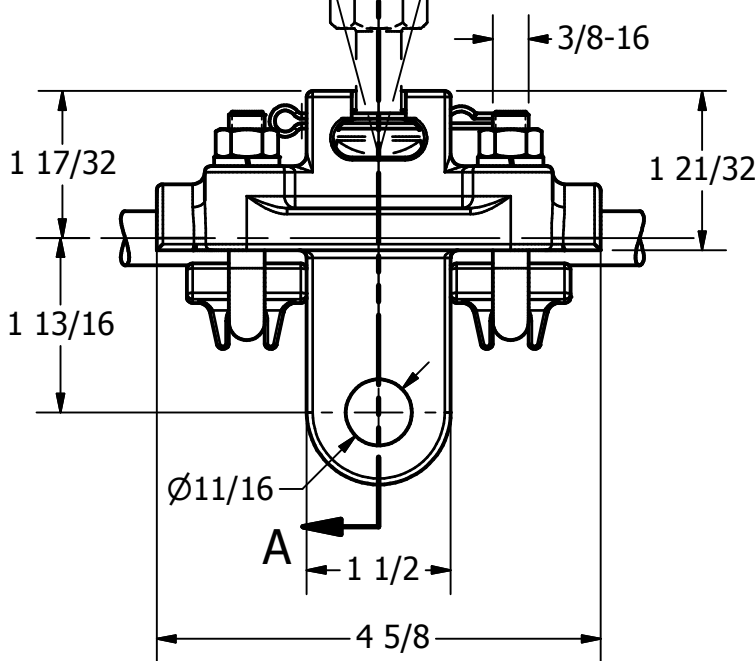


CABLE RANGE  
MIN. 1/0 STR (.373 DIA.)  
MAX. 300 MCM (.630 DIA.)



15° MAX. A 15° MAX.

SEE DWG. C-2618  
OR DWG. B-7078



SECTION A-A

**MATERIAL:**  
ALUMINUM BRONZE ASTM B30.  
U-BOLTS, NUTS AND  
LOCK WASHERS-SILICON BRONZE  
COTTER KEY-ST STEEL

THIS DRAWING AND ALL INFORMATION ON IT IS THE PROPERTY OF AFL. IT IS CONFIDENTIAL AND IT IS GIVEN TO YOU FOR A LIMITED PURPOSE AND MUST BE RETURNED UPON REQUEST. NEITHER THIS DRAWING OR ANY PART OF IT NOR ANY INFORMATION CONCERNING IT MAY BE COPIED, EXHIBITED, OR FURNISHED TO OTHERS NOR PHOTOGRAPHS TAKEN OF ANY ARTICLE FABRICATED OR ASSEMBLED FROM THE DRAWING WITHOUT THE CONSENT OF AFL.

LOCATION

CONTRACT NO

CUST / CONTR

REVISIONS

REV	DESCRIPTION	DATE	BY	APR
2	RE-DRAWN IN NVENTOR	3-2-10	LK	EP

DRN BY: CG  
DRN DATE: 6-2-93  
CHK BY: HJ  
CHK DATE: 6-2-93

**FAFL**

**DOSSERT®**

CLAMP, SWIVEL, BODY SPAN

REV 2

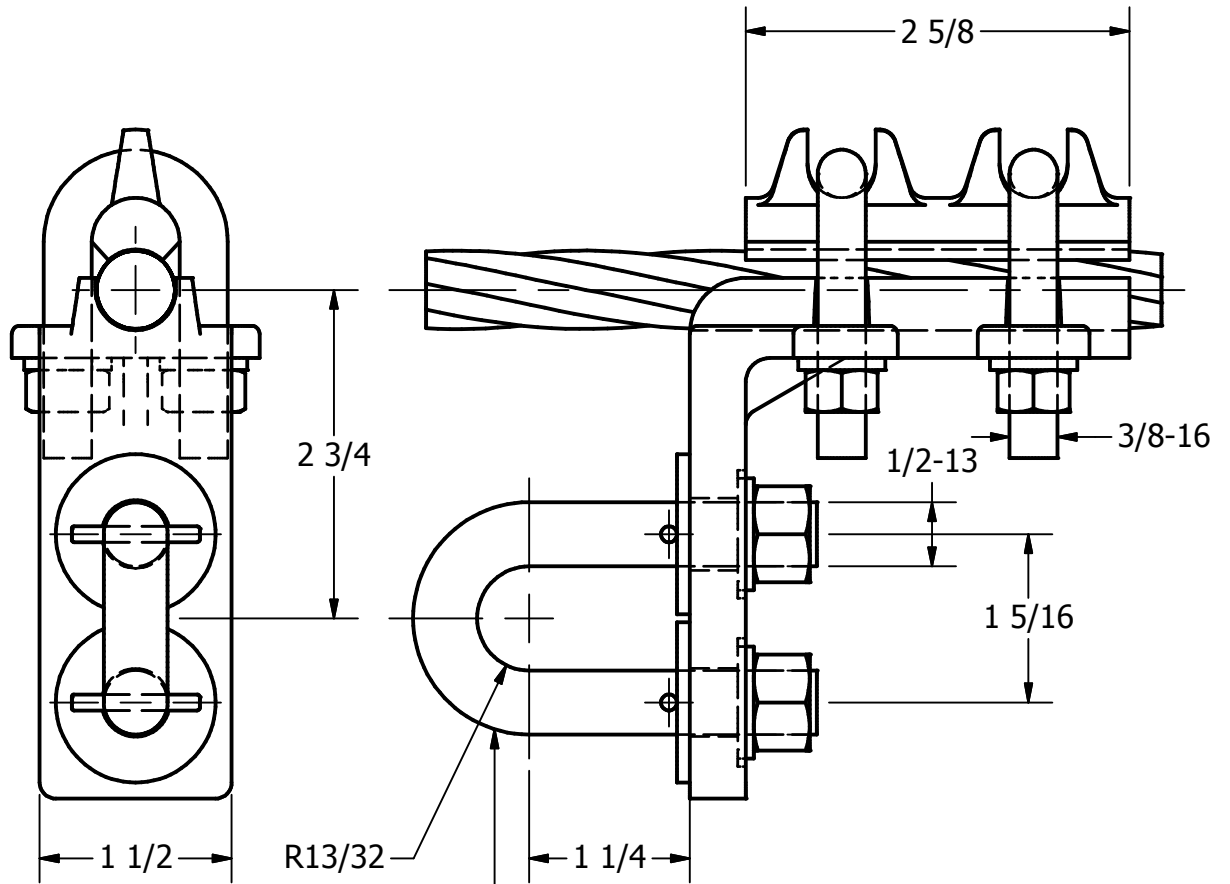
BSSCC57

1 OF 1

ITEM NO

DWG NO

THIS DRAWING AND ALL INFORMATION ON IT IS THE PROPERTY OF AFL. IT IS CONFIDENTIAL AND IT IS GIVEN TO YOU FOR A LIMITED PURPOSE AND MUST BE RETURNED UPON REQUEST. NEITHER THIS DRAWING OR ANY PART OF IT NOR ANY INFORMATION CONCERNING IT MAY BE COPIED, EXHIBITED, OR FURNISHED TO OTHERS NOR PHOTOGRAPHS TAKEN OF ANY ARTICLE FABRICATED OR ASSEMBLED FROM THE DRAWING WITHOUT THE CONSENT OF AFL.



**MATERIAL**

CLAMP - ALUMINUM BRONZE ASTM B30

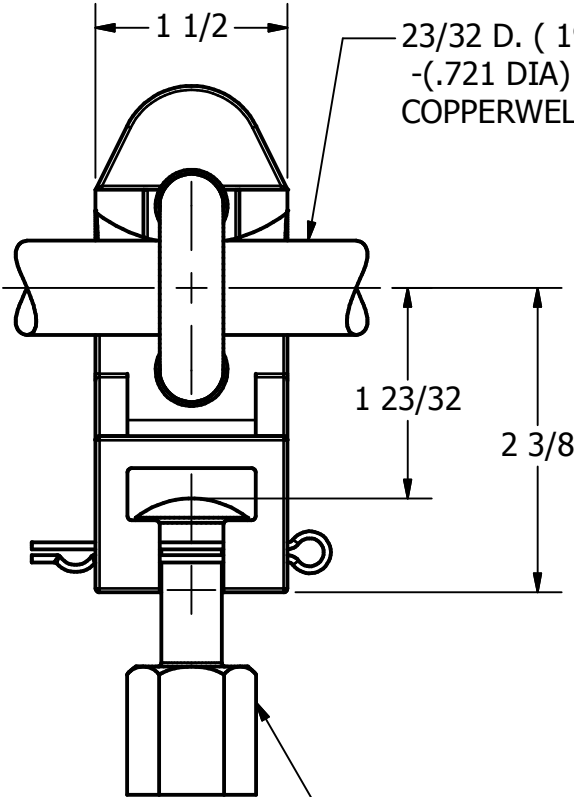
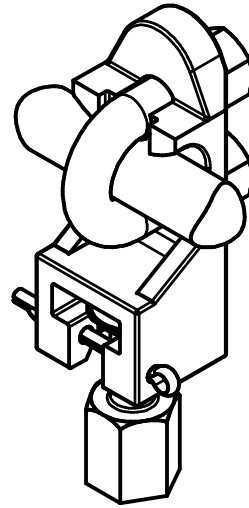
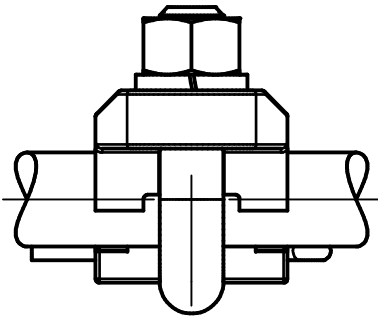
U-BOLTS, NUTS, AND L. WASHERS - SILICON BRONZE

LOCATION					CONTRACT NO		CUST / CONTR	
REVISIONS								
REV	DESCRIPTION	DATE	BY	APR	SPAN WIRE LOOP CLAMP			
					CC438-LC			
DRN BY: NF DRN DATE: 4-28-10 CHK BY: EP CHK DATE: 4-28-10					REV	0		1 OF 1

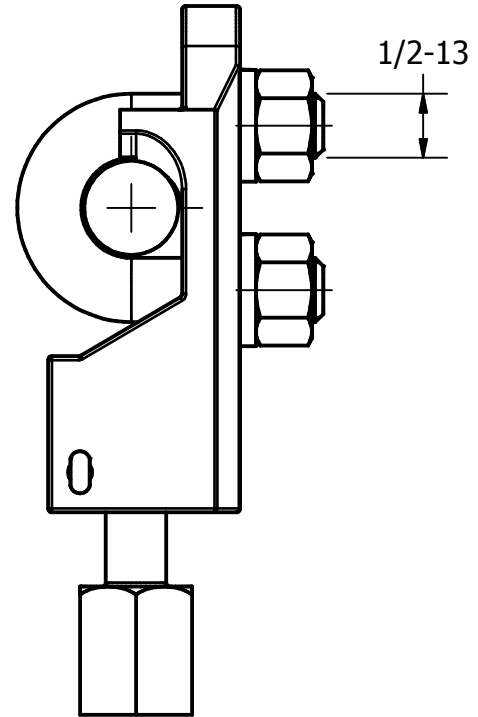
ITEM NO

DWG NO  
D-6524

THIS DRAWING AND ALL INFORMATION ON IT IS THE PROPERTY OF AFL. IT IS CONFIDENTIAL AND IT IS GIVEN TO YOU FOR A LIMITED PURPOSE AND MUST BE RETURNED UPON REQUEST. NEITHER THIS DRAWING OR ANY PART OF IT NOR ANY INFORMATION CONCERNING IT MAY BE COPIED, EXHIBITED, OR FURNISHED TO OTHERS NOR PHOTOGRAPHS TAKEN OF ANY ARTICLE FABRICATED OR ASSEMBLED FROM THE DRAWING WITHOUT THE CONSENT OF AFL.



23/32 D. ( 19 STRDS #7)  
-.721 DIA)  
COPPERWELD WIRE



SEE DWG. C-2618  
OR B-7078

**MATERIAL:**  
ALUMINUM BRONZE ASTM B30.  
U-BOLTS, NUTS AND LOCK WASHERS  
-SILICON BRONZE  
COTTER KEY-STAINLESS STEEL

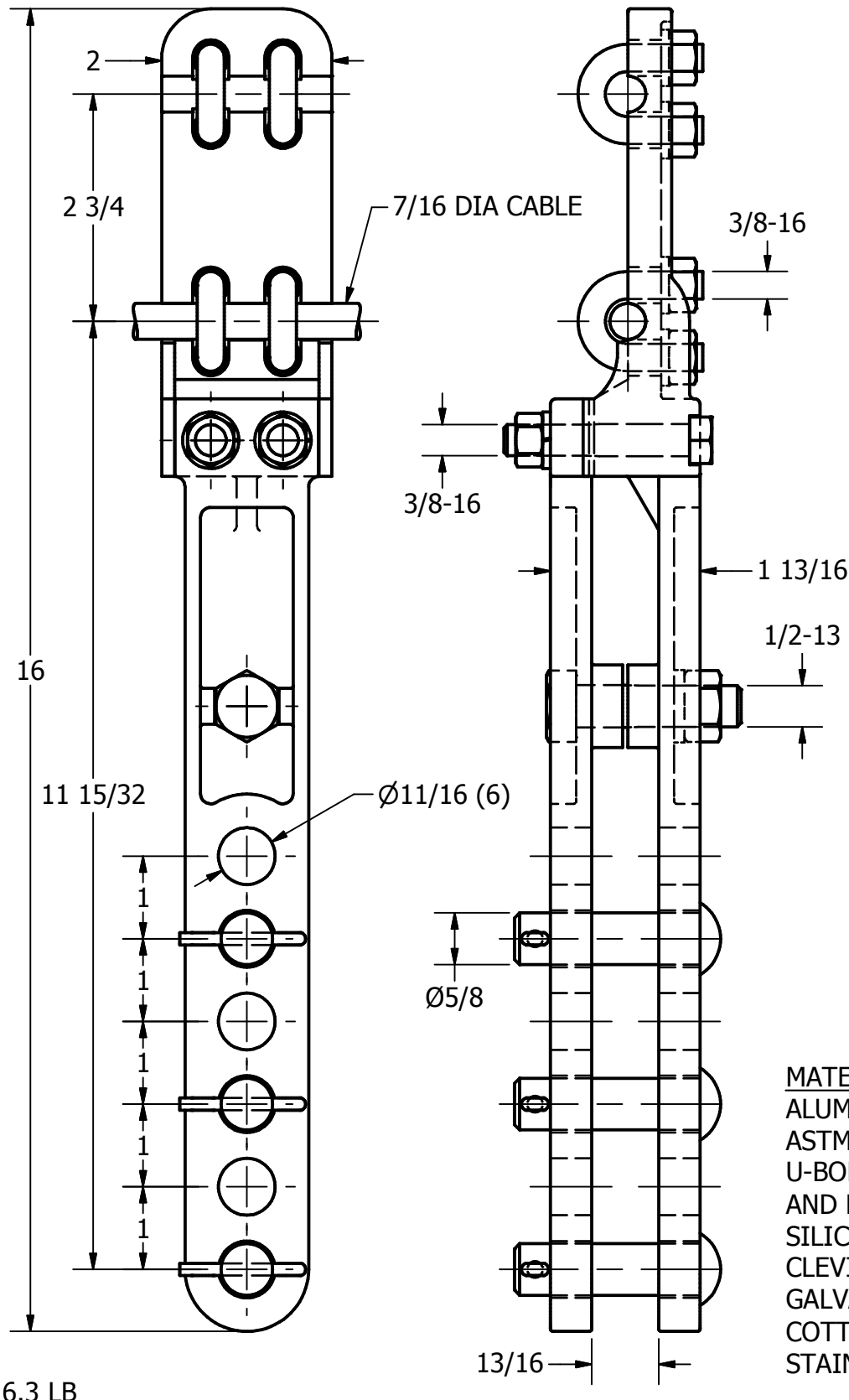
1.85 LBS

LOCATION					CONTRACT NO		CUST / CONTR	
REVISIONS								
REV	DESCRIPTION	DATE	BY	APR	CLAMP, CROSS SPAN			
4	RE-DRAWN IN INVENTOR	3-3-10	LK	EP	CSTC72-63			
DRN BY: ES DRN DATE: 6-10-87 CHK BY: HJ CHK DATE: 6-10-87					REV	4		1 OF 1

ITEM NO

DWG NO  
B-8657

THIS DRAWING AND ALL INFORMATION ON IT IS THE PROPERTY OF AFL. IT IS CONFIDENTIAL AND IT IS GIVEN TO YOU FOR A LIMITED PURPOSE AND MUST BE RETURNED UPON REQUEST. NEITHER THIS DRAWING OR ANY PART OF IT NOR ANY INFORMATION CONCERNING IT MAY BE COPIED, EXHIBITED, OR FURNISHED TO OTHERS NOR PHOTOGRAPHS TAKEN OF ANY ARTICLE FABRICATED OR ASSEMBLED FROM THE DRAWING WITHOUT THE CONSENT OF AFL.



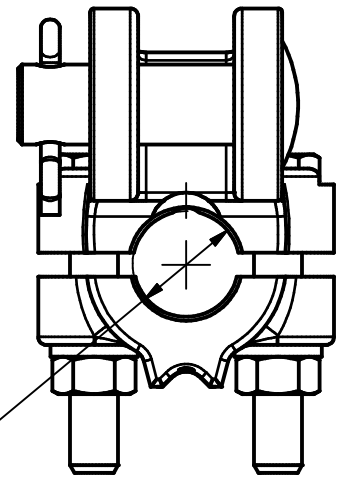
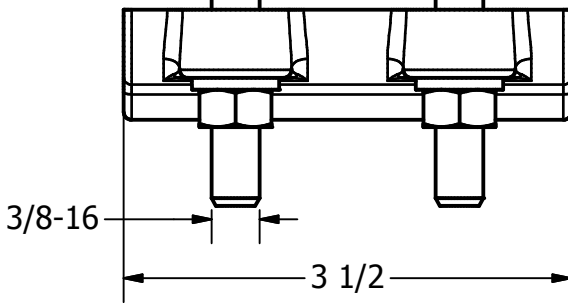
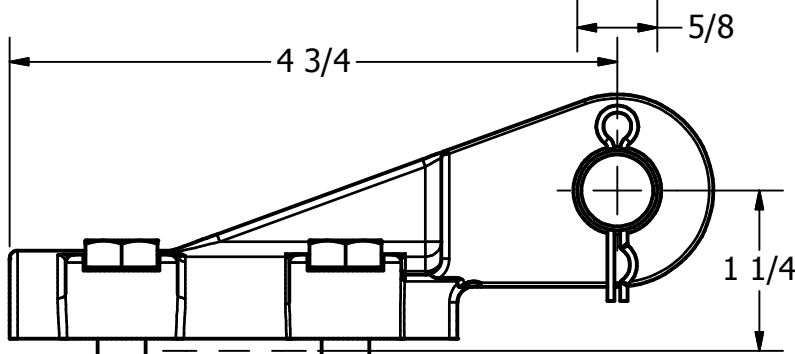
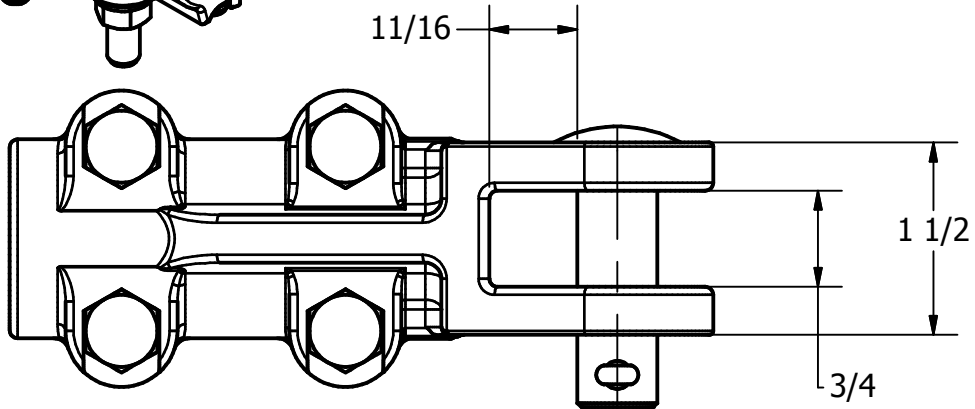
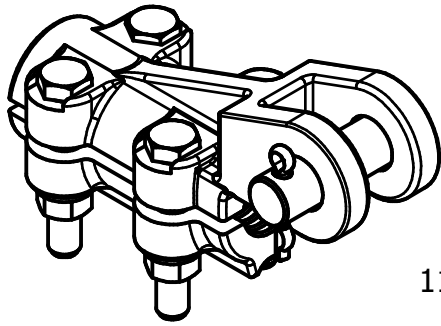
**MATERIAL**  
 ALUMINUM BRONZE  
 ASTM B30  
 U-BOLTS, BOLTS, NUTS  
 AND L. WASHERS -  
 SILICON BRONZE  
 CLEVIS PINS -  
 GALVANIZED STEEL  
 COTTER PINS -  
 STAINLESS STEEL

LOCATION				CONTRACT NO		CUST / CONTR																					
<b>REVISIONS</b> <table border="1"> <thead> <tr> <th>REV</th> <th>DESCRIPTION</th> <th>DATE</th> <th>BY</th> <th>APR</th> </tr> </thead> <tbody> <tr> <td>2</td> <td>REDRAWN IN INVENTOR</td> <td>5-4-10</td> <td>NF</td> <td>EP</td> </tr> <tr> <td> </td> <td> </td> <td> </td> <td> </td> <td> </td> </tr> <tr> <td> </td> <td> </td> <td> </td> <td> </td> <td> </td> </tr> </tbody> </table>				REV	DESCRIPTION	DATE	BY	APR	2	REDRAWN IN INVENTOR	5-4-10	NF	EP											DRN BY: ET DRN DATE: 3-19-01 CHK BY: - CHK DATE: -			
REV	DESCRIPTION	DATE	BY	APR																							
2	REDRAWN IN INVENTOR	5-4-10	NF	EP																							
				DROP BRACKET, 7/16 DIA MW, 5/8 DIA CLEVIS																							
				REV 2		DWAS44-63-6H																					
						1 OF 1																					

ITEM NO

DWG NO  
D-6764

THIS DRAWING AND ALL INFORMATION ON IT IS THE PROPERTY OF AFL. IT IS CONFIDENTIAL AND IT IS GIVEN TO YOU FOR A LIMITED PURPOSE AND MUST BE RETURNED UPON REQUEST. NEITHER THIS DRAWING OR ANY PART OF IT NOR ANY INFORMATION CONCERNING IT MAY BE COPIED, EXHIBITED, OR FURNISHED TO OTHERS NOR PHOTOGRAPHS TAKEN OF ANY ARTICLE FABRICATED OR ASSEMBLED FROM THE DRAWING WITHOUT THE CONSENT OF AFL.



**MATERIAL:**  
ALUMINUM BRONZE ASTM B30

BOLTS, NUTS, & LOCK WASHERS -EVERDUR  
CLEVIS PIN-GALVANIZED STEEL  
COTTER KEY-STAINLESS STEEL

**CABLE RANGE**  
MIN. 1/0 SOL CU (.325 DIA)  
MAX.500 MCM (.814 DIA.)

3.19 LBS

LOCATION

CONTRACT NO

CUST / CONTR

REVISIONS

REV	DESCRIPTION	DATE	BY	APR
2	RE-DRAWN IN INVENTOR	2-9-10	LK	EP

DRN BY:  
ES  
DRN DATE:  
3-7-88  
CHK BY:  
HJ  
CHK DATE:  
3-7-88

**FAFL**

**DOSSERT®**

CLAMP, FEEDER CABLE STRAIN

REV  
2

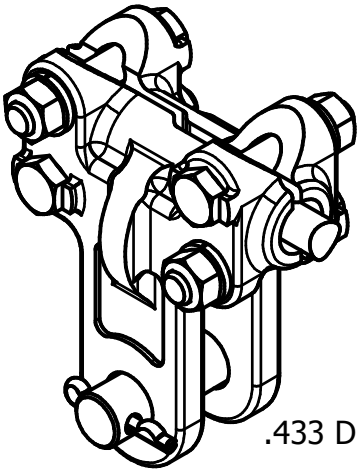
SEC50-4B-63

1 OF 1

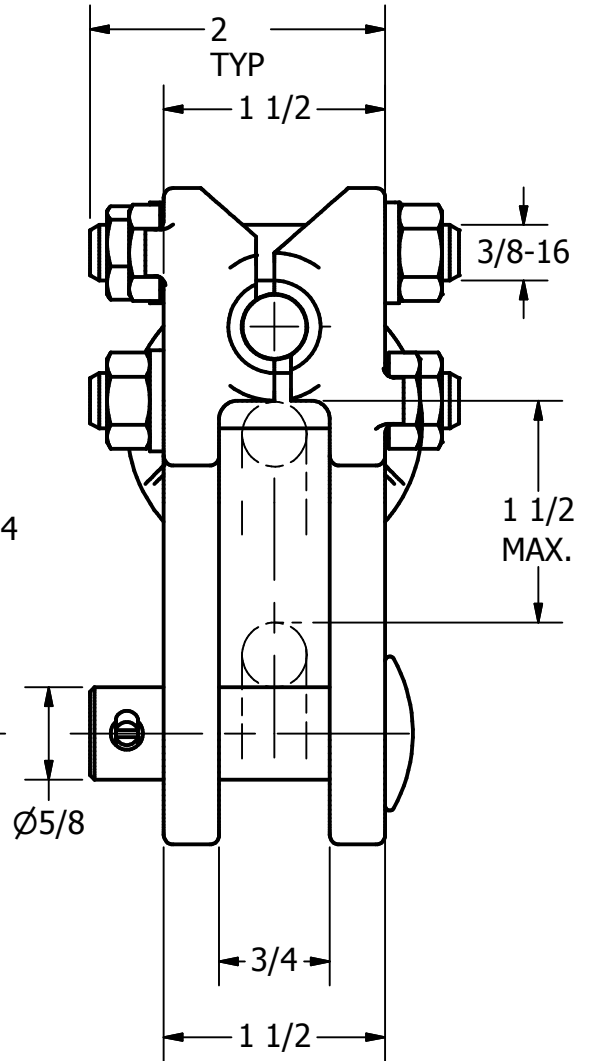
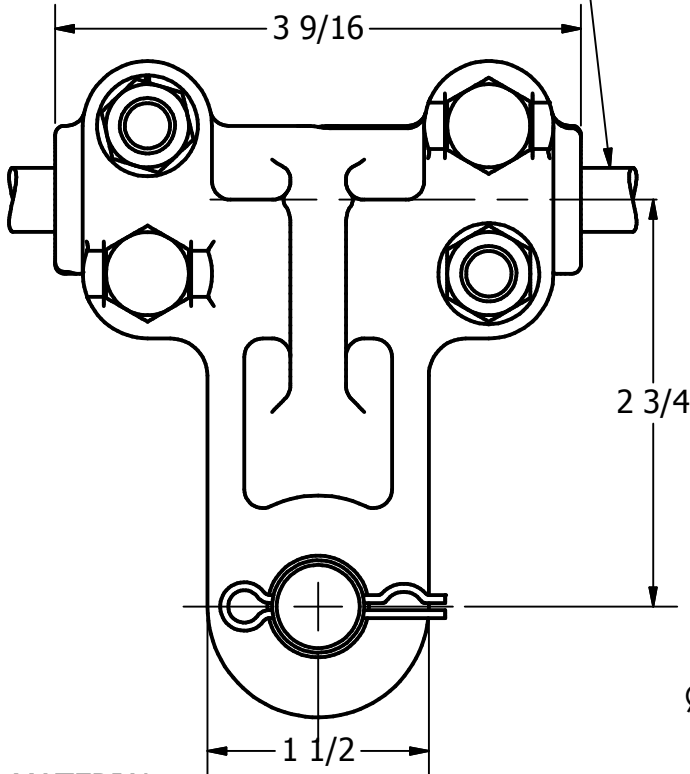
ITEM NO

DWG NO  
D-6591

THIS DRAWING AND ALL INFORMATION ON IT IS THE PROPERTY OF AFL. IT IS CONFIDENTIAL AND IT IS GIVEN TO YOU FOR A LIMITED PURPOSE AND MUST BE RETURNED UPON REQUEST. NEITHER THIS DRAWING OR ANY PART OF IT NOR ANY INFORMATION CONCERNING IT MAY BE COPIED, EXHIBITED, OR FURNISHED TO OTHERS NOR PHOTOGRAPHS TAKEN OF ANY ARTICLE FABRICATED OR ASSEMBLED FROM THE DRAWING WITHOUT THE CONSENT OF AFL.



.433 D. (7 STRDS # 7)  
STEADY WIRE



**MATERIAL:**  
ALUMINUM BRONZE  
ASTM B30,  
T.S. (MIN) 75,000 PSI  
Y.S. (MIN) 30,000 PSI

BOLTS, NUTS AND  
LOCK WASHERS SILICON BRONZE

CLEVIS PIN GALV  
COTTER PIN STSTL

LOCATION				CONTRACT NO		CUST / CONTR	
REVISIONS				DRN BY: CS DRN DATE: 7-8-87 CHK BY: HJ CHK DATE: 7-8-87			
REV	DESCRIPTION	DATE	BY	APR	<b>FAFL DOSSERT®</b> CLAMP, STEADY WIRE/ROD		
2	RE-DRAWN IN INVENTOR	2-10-10	LK	EP			
				REV	SWRC43-44		1 OF 1
				2			