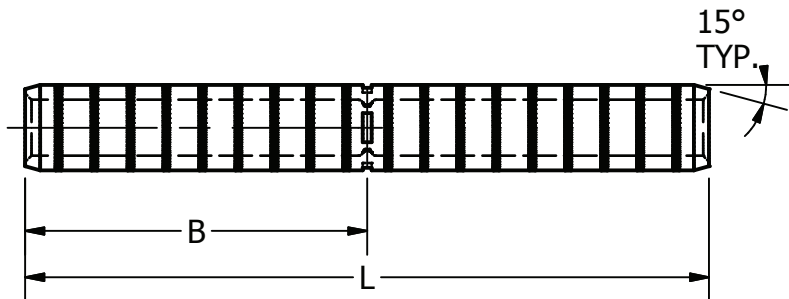
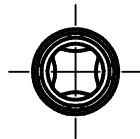
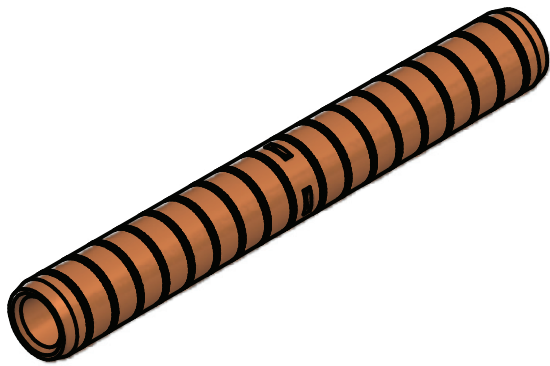


ITEM NO

DWG NO

D-5792



THIS DRAWING AND ALL INFORMATION ON IT IS THE PROPERTY OF AFL. IT IS CONFIDENTIAL AND IT IS GIVEN TO YOU FOR A LIMITED PURPOSE AND MUST BE RETURNED UPON REQUEST. NEITHER THIS DRAWING OR ANY PART OF IT NOR ANY INFORMATION CONCERNING IT MAY BE COPIED, EXHIBITED, OR FURNISHED TO OTHERS NOR PHOTOGRAPHS TAKEN OF ANY ARTICLE FABRICATED OR ASSEMBLED FROM THE DRAWING WITHOUT THE CONSENT OF AFL.

CATALOG #	SIZE	STR	B	L	DIE INDEX
FTCS2	#6 STR	7	1 5/16	2 5/8	161
FTCS4	#4 STR	7	1 3/8	2 3/4	162
FTCS6	#2 STR	7	2	4	163
FTCS8	#1 STR	7,19	2 1/4	4 1/2	164
FTCS10	1/0 STR	7,19	2 7/8	5 3/4	165
FTCS13	2/0 STR	7,12,19	3 1/16	6 1/8	166
FTCS17	3/0 STR	7,19	3 1/2	7	167
*FTCS21	4/0 STR	7,12,19	3 9/16	7 1/8	168
FTCS25	250 MCM	7,19,37	3 15/16	7 7/8	169
FTCS30	300 MCM	19,37	4 1/4	8 1/2	170
FTCS35	350 MCM	12,19,37	5 3/8	10 3/4	267

*FTCS21 SPLICE

WILL WITHSTAND WITHOUT DEFORMATION OR
SLIPPAGE OF WIRE 10,500 PULLING FORCE.

WEIGHT: 0.8 LBS

MATERIAL

DRAWN COPPER TUBE (DOSSERT SPEC CUC-1179)
(BARRELS LINED WITH ALUMINUM BRONZE POWER
AND CAPPED)

ELECTRICAL CONDUCTIVITY: 98 % I.A.C.S.

LOCATION

CONTRACT NO

CUST / CONTR

REVISIONS				
REV	DESCRIPTION	DATE	BY	APR
4	RE-DRAWN IN INVENTOR	2-26-10	LK	EP

DRN BY:
ES
DRN DATE:
1-20-82
CHK BY:
JS
CHK DATE:
1-20-82

SPLICE, COMPRESSION, FULL TENSION

REV
4

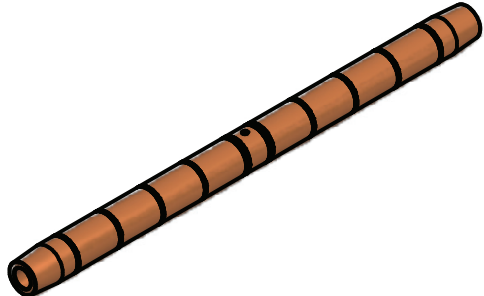
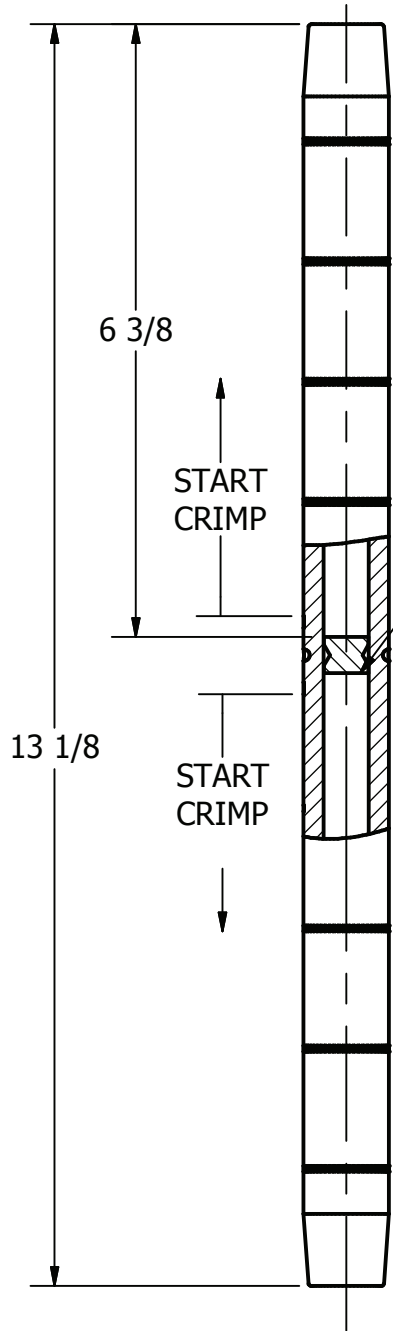
FTCS SERIES

1 OF 1

ITEM NO

DWG NO
D-5864

THIS DRAWING AND ALL INFORMATION ON IT IS THE PROPERTY OF AFL. IT IS CONFIDENTIAL AND IT IS GIVEN TO YOU FOR A LIMITED PURPOSE AND MUST BE RETURNED UPON REQUEST. NEITHER THIS DRAWING OR ANY PART OF IT NOR ANY INFORMATION CONCERNING IT MAY BE COPIED, EXHIBITED, OR FURNISHED TO OTHERS NOR PHOTOGRAPHS TAKEN OF ANY ARTICLE FABRICATED OR ASSEMBLED FROM THE DRAWING WITHOUT THE CONSENT OF AFL.



CENTER PLUG
(ETP COPPER)

CABLE SIZE:
COPPERWELD HIGH STRENGTH WIRE (.433 DIA)
OR
2/0 H.D. COPPER (.419 DIA)
BREAKING STRENGTH 13,910 LB

LOADING:
HIGH TENSION SPLICE WILL WITHSTAND WITHOUT DEFORMATION OR SLIPPAGE OF WIRE 13,200 LBS. PULLING FORCE (95% OF BREAKING STRENGTH OF WIRE)
MODULUS OF COMPRESSIBILITY - .17

MATERIAL:
DRAWN COPPER TUBE (DOSSERT SPEC CUC-1179)
(BARRELS LINED WITH ALUMINUM BRONZE POWER AND CAPPED)

1.60 LBS

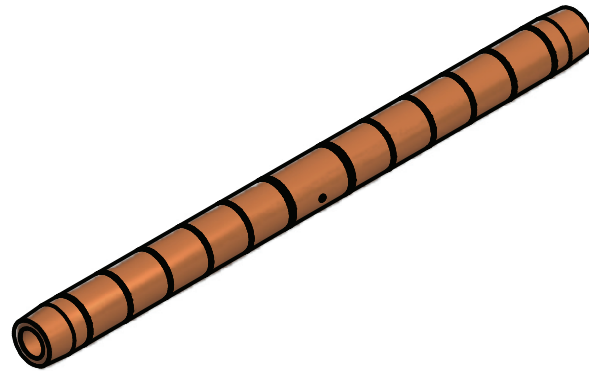
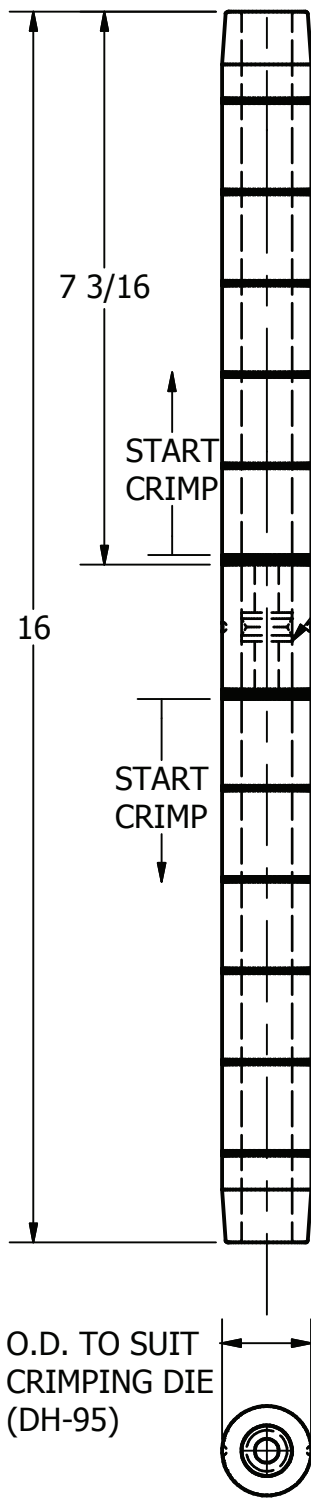
O.D. TO SUIT
CRIMPING DIE
(DH-74)

LOCATION					CONTRACT NO		CUST / CONTR		
REVISIONS									
REV	DESCRIPTION	DATE	BY	APR	SPLICE, COMPRESSION, FULL TENSION				
2	RE-DRAWN IN INVENTOR	2-26-10	LK	EP					
					DRN BY: ES				
					DRN DATE: 7-15-82				
					CHK BY: JS				
					CHK DATE: 7-15-82				
					REV 2	FTCS438			1 OF 1

ITEM NO

DWG NO
D-6374

THIS DRAWING AND ALL INFORMATION ON IT IS THE PROPERTY OF AFL. IT IS CONFIDENTIAL AND IT IS GIVEN TO YOU FOR A LIMITED PURPOSE AND MUST BE RETURNED UPON REQUEST. NEITHER THIS DRAWING OR ANY PART OF IT NOR ANY INFORMATION CONCERNING IT MAY BE COPIED, EXHIBITED, OR FURNISHED TO OTHERS NOR PHOTOGRAPHS TAKEN OF ANY ARTICLE FABRICATED OR ASSEMBLED FROM THE DRAWING WITHOUT THE CONSENT OF AFL.



CENTER PLUG
(ETP COPPER)

CABLE SIZE:
COPPERWELD - COPPER WIRE - (.613 DIA)
4/0 TYPE "E"
7 CW STR - (.1225 DIA)
12 CU STR - (.1225 DIA)]

LOADING:
HIGH TENSION SPLICE WILL WITHSTAND WITHOUT DEFORMATION OR SLIPPAGE OF WIRE 20,000 LBS PULLING FORCE (95% OF BREAKING STRENGTH OF 4/0 TYPE "E" WIRE)
MODULUS OF COMPRESSIBILITY - .17
MIN ULTIMATE LOAD - 21,850 LBS
MAX WORKING LOAD - 8,740 LBS
SAFETY FACTOR - 2.5

MATERIAL:
DRAWN COPPER TUBE (DOSSERT SPEC CUC-1179)
(BARRELS LINED WITH ALUMINUM BRONZE POWER AND CAPPED)

3.76 LBS

LOCATION					CONTRACT NO		CUST / CONTR	
REVISIONS					DRN BY: ES			
REV	DESCRIPTION	DATE	BY	APR	DRN DATE: 12-17-85			
4	RE-DRAWN IN INVENTOR	10-23-09	BH	EP	CHK BY: JS			
					CHK DATE: 12-18-85			
					REV	FTCS613		1 OF 1
					4			

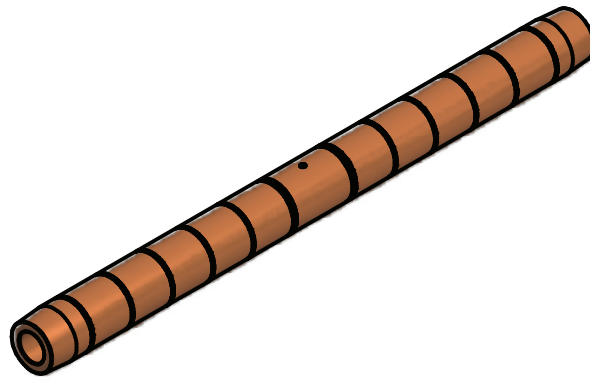
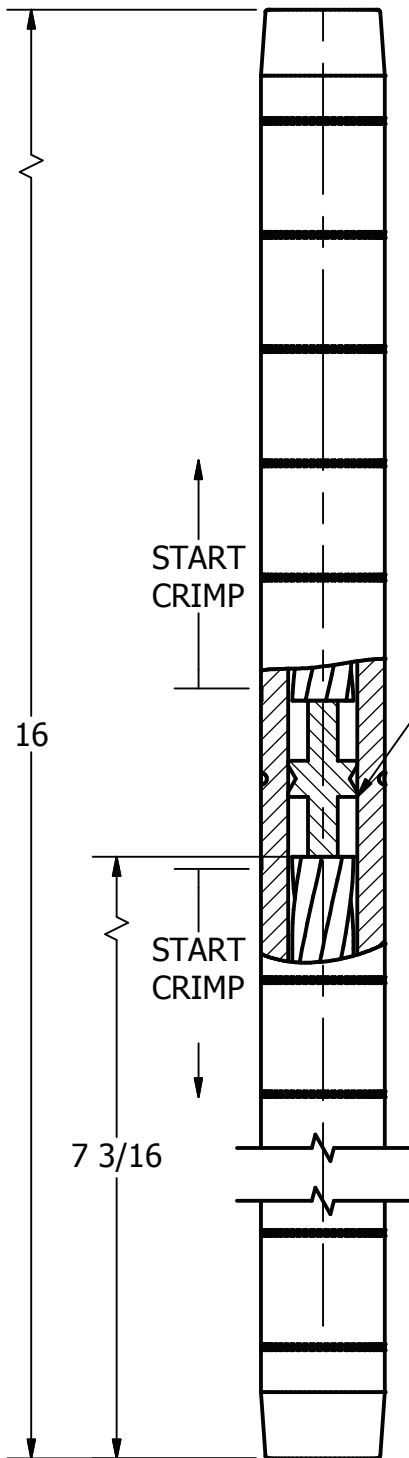


SPLICE, COMPRESSION, FULL TENSION

ITEM NO

DWG NO
D-7359

THIS DRAWING AND ALL INFORMATION ON IT IS THE PROPERTY OF AFL. IT IS CONFIDENTIAL AND IT IS GIVEN TO YOU FOR A LIMITED PURPOSE AND MUST BE RETURNED UPON REQUEST. NEITHER THIS DRAWING OR ANY PART OF IT NOR ANY INFORMATION CONCERNING IT MAY BE COPIED, EXHIBITED, OR FURNISHED TO OTHERS NOR PHOTOGRAPHS TAKEN OF ANY ARTICLE FABRICATED OR ASSEMBLED FROM THE DRAWING WITHOUT THE CONSENT OF AFL.



CENTER PLUG
(ETP COPPER)

CABLE SIZE

COPPERWELD HIGH STRENGTH WIRE
21/32 DIA (19 No. 8 COPPERWIRE)
BREAKING STRENGTH 28,380 LBS

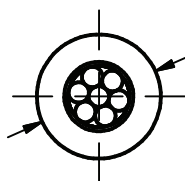
LOADING

HIGH TENSION SPLICE WILL WITHSTAND WITHOUT
DEFORMATION OR SLIPPAGE OF WIRE 27,000 LBS.
PULLING FORCE (95% OF BREAKING STRENGTH OF
WIRE)
MODULUS OF COMPRESSIBILITY - .18

MATERIAL

DRAWN COPPER TUBE (DOSSERT SPEC CUC-1179)
(BARRELS LINED WITH ALUMINUM BRONZE POWER
AND CAPPED)

3.98 LBS



O.D. SUIT
CRIMPING DIE
(DH-102)

LOCATION					CONTRACT NO		CUST / CONTR	
REVISIONS					DRN BY: BB			
REV	DESCRIPTION	DATE	BY	APR	DRN DATE: 7-20-94			
2	RE-DRAWN IN INVENTOR	2-26-10	LK	EP	CHK BY: JS			
					CHK DATE: 7-20-94			
					REV	FTCS642		1 OF 1
					2			

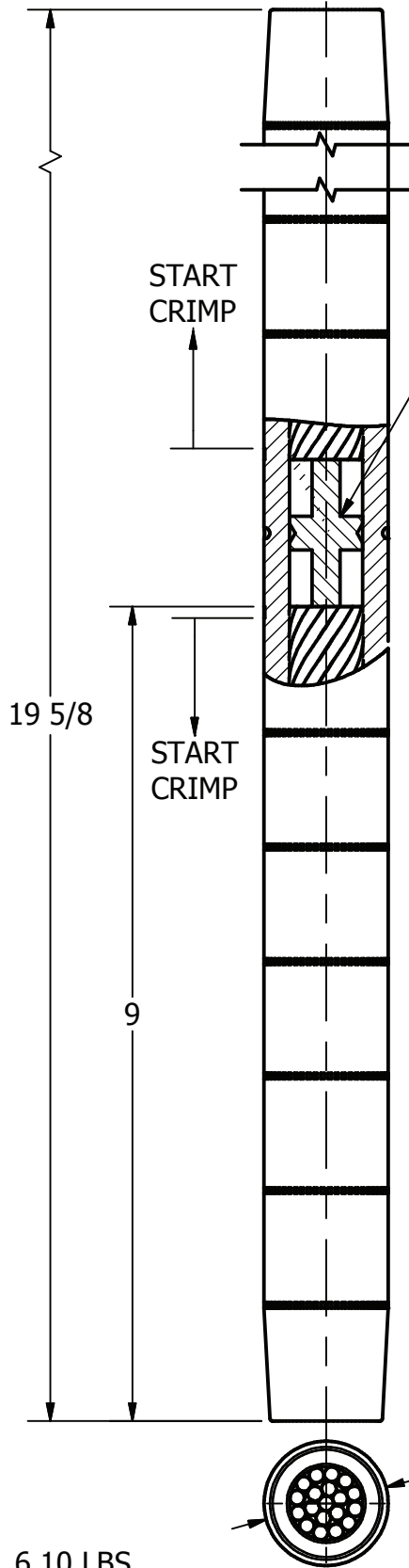


SPLICE, COMPRESSION, FULL TENSION

ITEM NO

DWG NO
C-2282

THIS DRAWING AND ALL INFORMATION ON IT IS THE PROPERTY OF AFL. IT IS CONFIDENTIAL AND IT IS GIVEN TO YOU FOR A LIMITED PURPOSE AND MUST BE RETURNED UPON REQUEST. NEITHER THIS DRAWING OR ANY PART OF IT NOR ANY INFORMATION CONCERNING IT MAY BE COPIED, EXHIBITED, OR FURNISHED TO OTHERS NOR PHOTOGRAPHS TAKEN OF ANY ARTICLE FABRICATED OR ASSEMBLED FROM THE DRAWING WITHOUT THE CONSENT OF AFL.



CENTER PLUG
(ETP COPPER)

CABLE SIZE:

COPPER WIRE (HARD DRAWN)
350MCM 19 STR - (.681 DIA)
BREAKINGSTRENGTH 15,600 LBS
OR
COPPERWELD -COPPER(350MCM)
WIRE (.735 DIA)
TYPE "EK"
4 CW STR - (.147 DIA)
15 CU STR - (.147 DIA)
BREAKING STRENGTH 23,850 LBS

LOADING:

HIGH TENSION SPLICE WILL WITHSTAND WITHOUT DEFORMATION OR SLIPPAGE OF WIRE 23,850 LBS PULLING FORCE (95% OF BREAKING STRENGTH OF 350 MCM TYPE "EK" WIRE)

MATERIAL:

DRAWN COPPER TUBE (DOSSERT SPEC CUC-1179)
(BARRELS LINED WITH ALUMINUM BRONZE POWER AND CAPPED)

O.D. TO SUIT
CRIMPING DIE
(DH-110)

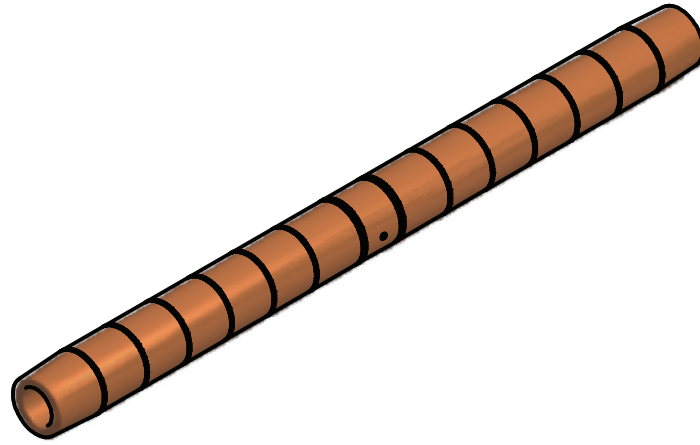
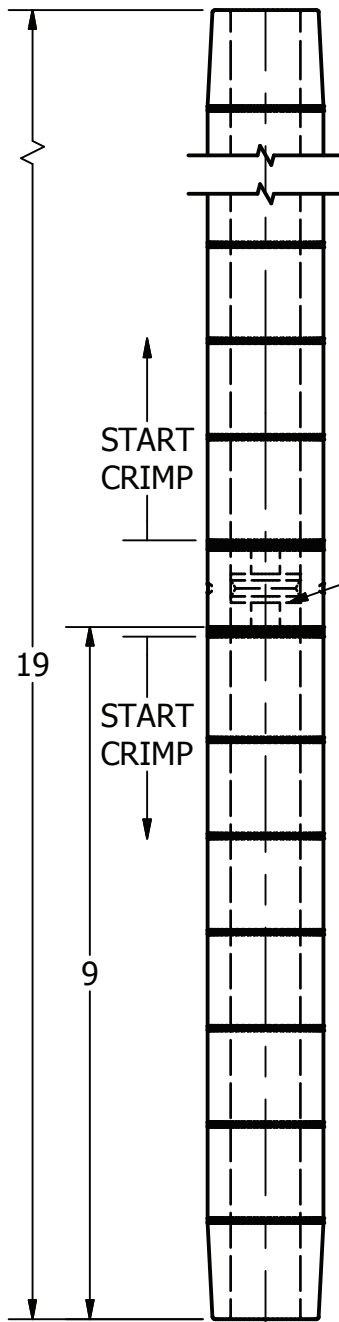
6.10 LBS

LOCATION					CONTRACT NO		CUST / CONTR		
REVISIONS					DRN BY: ES DRN DATE: 2-18-83 CHK BY: JS CHK DATE: 2-18-83				
REV	DESCRIPTION	DATE	BY	APR					
3	RE-DRAWN IN INVENTOR	3-10-10	LK	EP					
					SPLICE, COMPRESSION, FULL TENSION				
					REV 3	FTCS735			1 OF 1

ITEM NO

DWG NO

THIS DRAWING AND ALL INFORMATION ON IT IS THE PROPERTY OF AFL. IT IS CONFIDENTIAL AND IT IS GIVEN TO YOU FOR A LIMITED PURPOSE AND MUST BE RETURNED UPON REQUEST. NEITHER THIS DRAWING OR ANY PART OF IT NOR ANY INFORMATION CONCERNING IT MAY BE COPIED, EXHIBITED, OR FURNISHED TO OTHERS NOR PHOTOGRAPHS TAKEN OF ANY ARTICLE FABRICATED OR ASSEMBLED FROM THE DRAWING WITHOUT THE CONSENT OF AFL.



CENTER PLUG
(ETP COPPER)

CABLE SIZE:

COPPERWELD - COPPER
WIRE - (.821 DIA)
TYPE "E"
7 CW STR - (.1642 DIA)
12 CU STR - (.1642 DIA)]
BREAKING STRENGTH 34,500 LBS
OR
500 MCM 19 AND 37 STR
COPPER CABLE-(.814 DIA)
BREAKING STRENGTH 22,510 LBS

LOADING:

HIGH TENSION SPLICE WILL WITHSTAND WITHOUT
DEFORMATION OR SLIPPAGE OF WIRE 32,500 LBS
PULLING FORCE [95% OF BREAKING STRENGTH OF
(.821 DIA) TYPE "E" WIRE]

MATERIAL:

COMPRESSION SLEEVE- DRAWN COPPER TUBE
(DOSSERT SPEC CUC-1179)
(BARRELS LINED WITH ALUMINUM BRONZE POWER
AND CAPPED)

O.D. TO SUIT
CRIMPING DIE
(DH-123)

6.96 LBS

LOCATION

CONTRACT NO

CUST / CONTR

REVISIONS				
REV	DESCRIPTION	DATE	BY	APR

DRN BY:
BH
DRN DATE:
11-23-09
CHK BY:
EP
CHK DATE:
11-23-09



SPLICE, COMPRESSION, FULL TENSION, 500 MCM
CU CABLE-.821 DIA CU WELD WIRE

REV
0

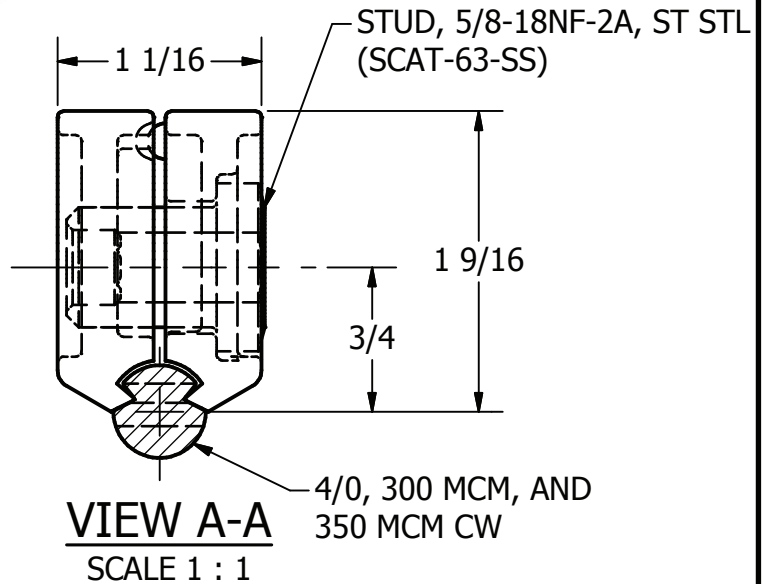
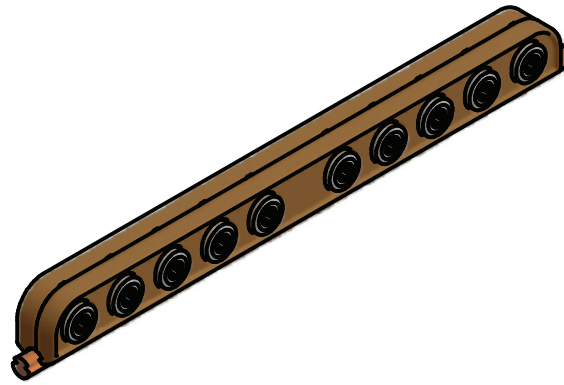
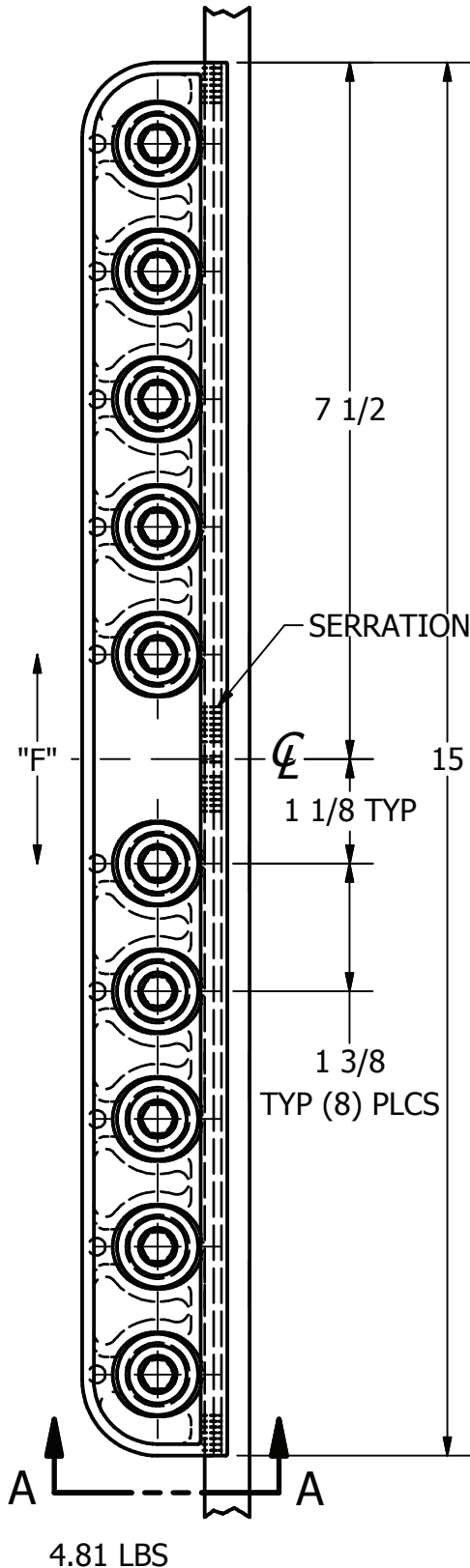
FTCS821

1 OF 1

ITEM NO

DWG NO

THIS DRAWING AND ALL INFORMATION ON IT IS THE PROPERTY OF AFL. IT IS CONFIDENTIAL AND IT IS GIVEN TO YOU FOR A LIMITED PURPOSE AND MUST BE RETURNED UPON REQUEST. NEITHER THIS DRAWING OR ANY PART OF IT NOR ANY INFORMATION CONCERNING IT MAY BE COPIED, EXHIBITED, OR FURNISHED TO OTHERS NOR PHOTOGRAPHS TAKEN OF ANY ARTICLE FABRICATED OR ASSEMBLED FROM THE DRAWING WITHOUT THE CONSENT OF AFL.



NOTE:
THIS SPLICE IS DESIGNED TO WITHSTAND WITHOUT DEFORMATION OR SLIPPAGE OF CONTACT WIRE 13,200 LBS OF PULLING FORCE (80% OF BREAKING STRENGTH OF 350 MCM, 90% OF 300 MCM, AND 100% OF 4/0 CONTACT WIRE)

MIN ULTIMATE STR LOAD
F= 26,700 LBS

MATERIAL
ALUMINUM BRONZE ASTM B30

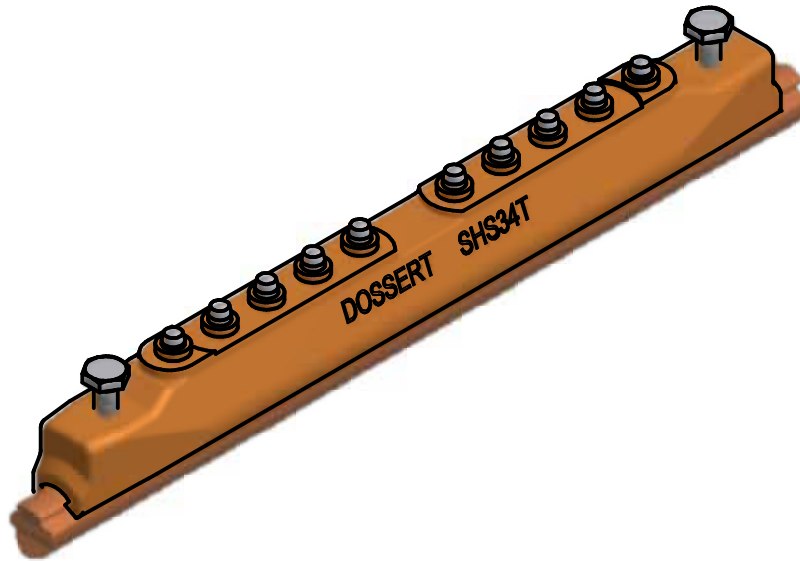
TORQUE STUD 45 FT-LBS

LOCATION					CONTRACT NO		CUST / CONTR	
REVISIONS								
REV	DESCRIPTION	DATE	BY	APR				
					SPLICE, CONTACT WIRE, 4/0-350 MCM			
DRN BY: SK DRN DATE: 10-26-09 CHK BY:					REV	SFS34-T		1 OF 1
CHK DATE:					0			

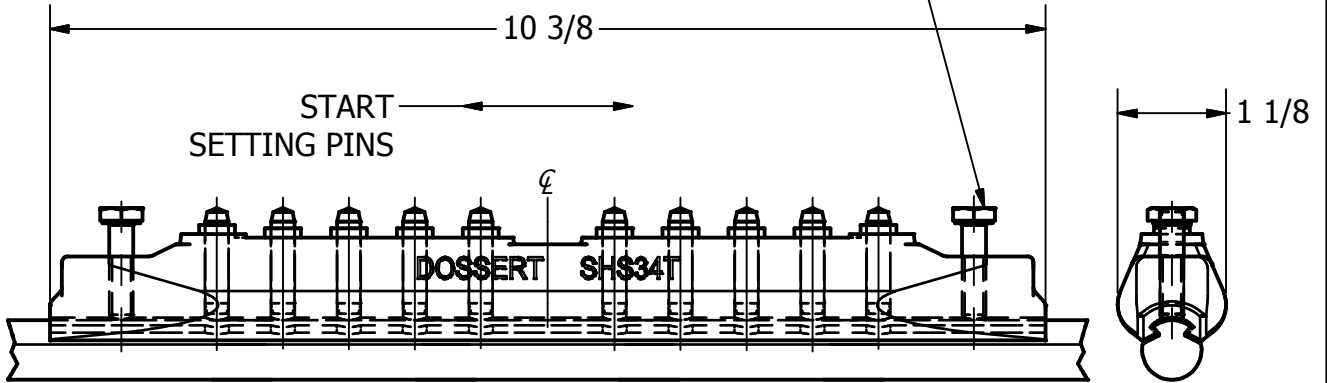
ITEM NO

DWG NO

THIS DRAWING AND ALL INFORMATION ON IT IS THE PROPERTY OF AFL. IT IS CONFIDENTIAL AND IT IS GIVEN TO YOU FOR A LIMITED PURPOSE AND MUST BE RETURNED UPON REQUEST. NEITHER THIS DRAWING OR ANY PART OF IT NOR ANY INFORMATION CONCERNING IT MAY BE COPIED, EXHIBITED, OR FURNISHED TO OTHERS NOR PHOTOGRAPHS TAKEN OF ANY ARTICLE FABRICATED OR ASSEMBLED FROM THE DRAWING WITHOUT THE CONSENT OF AFL.



SCREW SHOULD BE TIGHTENED JUST ENOUGH TO SEAT WIRE IN GROOVE



MATERIAL:
ALUMINUM BRONZE ASTM B30

HARDWARE:
1/4-20 X 1 HEX HD SCREW

DIE SET
SHS-DIE-01

2.79 LBS

LOCATION

CONTRACT NO

CUST / CONTR

REVISIONS

REV	DESCRIPTION	DATE	BY	APR

DRN BY:
BH
DRN DATE:
11-12-09
CHK BY:

CHK DATE:



SPLICE, PERMANENT, 350 MCM CW

REV
0

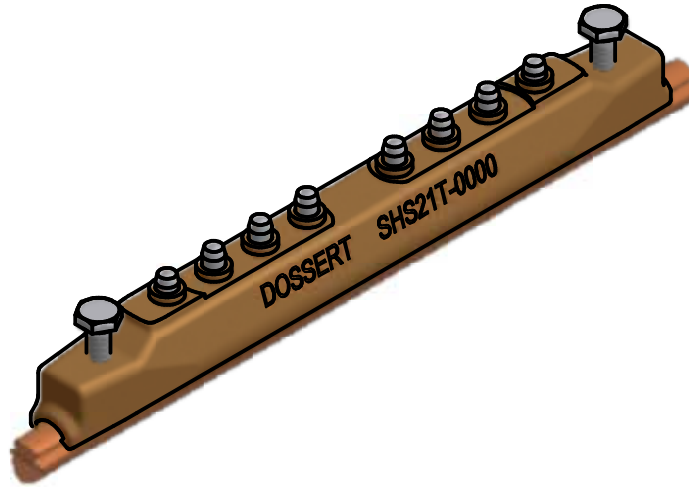
SHS34T

1 OF 1

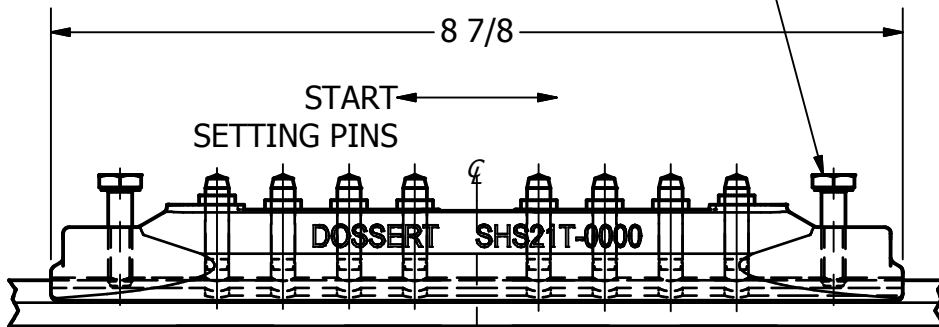
ITEM NO

DWG NO

THIS DRAWING AND ALL INFORMATION ON IT IS THE PROPERTY OF AFL. IT IS CONFIDENTIAL AND IT IS GIVEN TO YOU FOR A LIMITED PURPOSE AND MUST BE RETURNED UPON REQUEST. NEITHER THIS DRAWING OR ANY PART OF IT NOR ANY INFORMATION CONCERNING IT MAY BE COPIED, EXHIBITED, OR FURNISHED TO OTHERS NOR PHOTOGRAPHS TAKEN OF ANY ARTICLE FABRICATED OR ASSEMBLED FROM THE DRAWING WITHOUT THE CONSENT OF AFL.



SCREW SHOULD BE
TIGHTENED JUST ENOUGH
TO SEAT WIRE IN GROOVE




MATERIAL:
ALUMINUM BRONZE ASTM B30

HARDWARE:
1/4-20 X 1 HEX HD SCREW

DIE SET
SHS-DIE-01

1.91 LBS

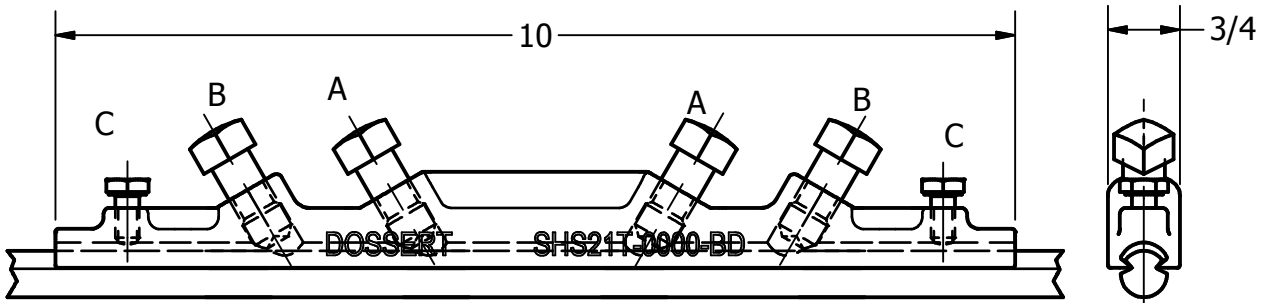
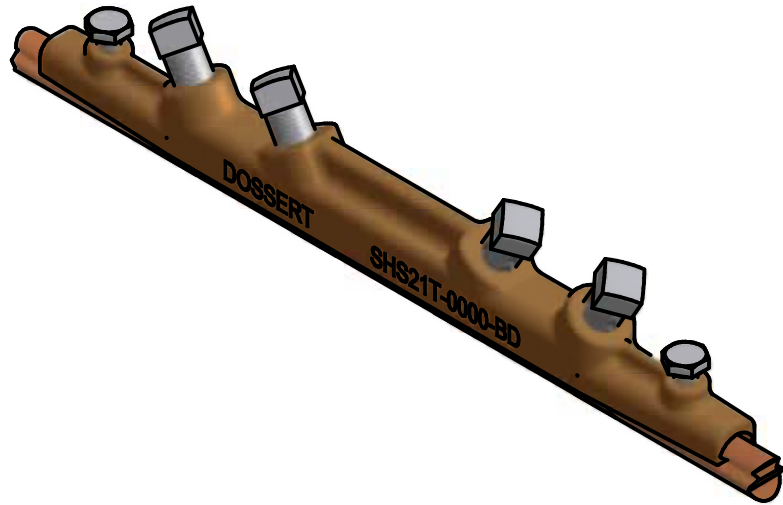
SCALE 1 / 2

LOCATION					CONTRACT NO		CUST / CONTR									
REVISIONS					 SPLICE, PERMANENT, 4/0 CW											
REV	DESCRIPTION	DATE	BY	APR												
					DRN BY: BH	<table border="1"> <tr> <td>REV</td> <td colspan="2">SHS21T-0000</td> <td>1 OF 1</td> </tr> <tr> <td>0</td> <td colspan="2"></td> <td></td> </tr> </table>			REV	SHS21T-0000		1 OF 1	0			
REV	SHS21T-0000		1 OF 1													
0																
					DRN DATE: 11-11-09											
					CHK BY:											
					CHK DATE:											

ITEM NO

DWG NO

THIS DRAWING AND ALL INFORMATION ON IT IS THE PROPERTY OF AFL. IT IS CONFIDENTIAL AND IT IS GIVEN TO YOU FOR A LIMITED PURPOSE AND MUST BE RETURNED UPON REQUEST. NEITHER THIS DRAWING OR ANY PART OF IT NOR ANY INFORMATION CONCERNING IT MAY BE COPIED, EXHIBITED, OR FURNISHED TO OTHERS NOR PHOTOGRAPHS TAKEN OF ANY ARTICLE FABRICATED OR ASSEMBLED FROM THE DRAWING WITHOUT THE CONSENT OF AFL.



MATERIAL:
ALUMINUM BRONZE ASTM B30

HARDWARE:
7/16-14 X 1 SQ HD SS CUP POINT
- STAINLESS STEEL
1/4-20 X 1/2 HEX HD SCREW -
STAINLESS STEEL

1.31 LBS

INSTALLATION NOTE:
AFTER FULLY INSERTING CONTACT WIRE
TIGHTENED INNER SCREW "A" 1 1/4 TURNS
AND OUTER SCREW "B" 1 FULL TURN.
SMALL STAINLESS STEEL SCREW "C"
SHOULD BE TIGHTENED JUST ENOUGH TO
SEAT WIRE IN GROOVE.

LOCATION					CONTRACT NO		CUST / CONTR	
REVISIONS								
REV	DESCRIPTION	DATE	BY	APR				
					DRN BY:			
					DRN DATE:	11-11-09		
					CHK BY:			
					CHK DATE:			
					REV	SHS21T-0000-BD		1 of 1
					0			