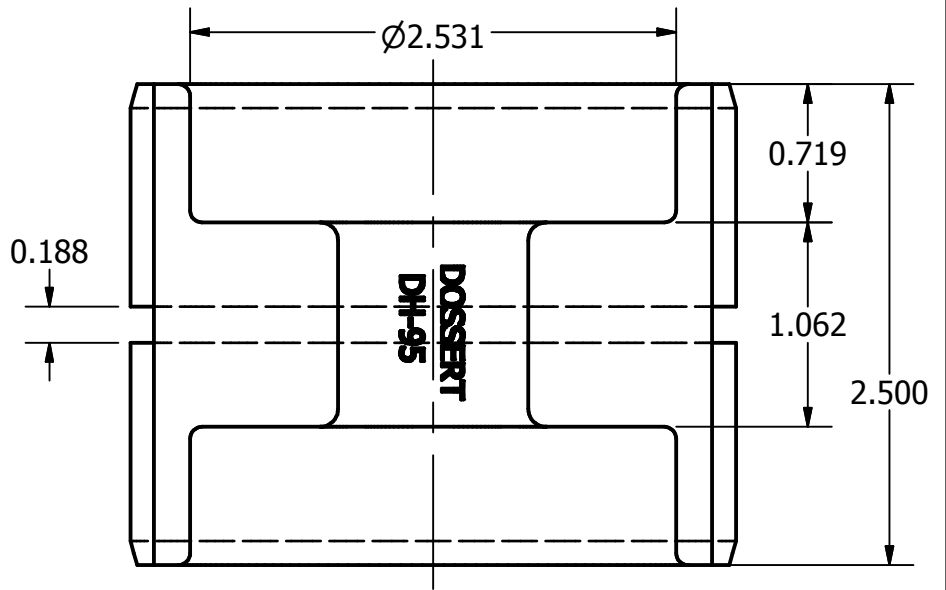
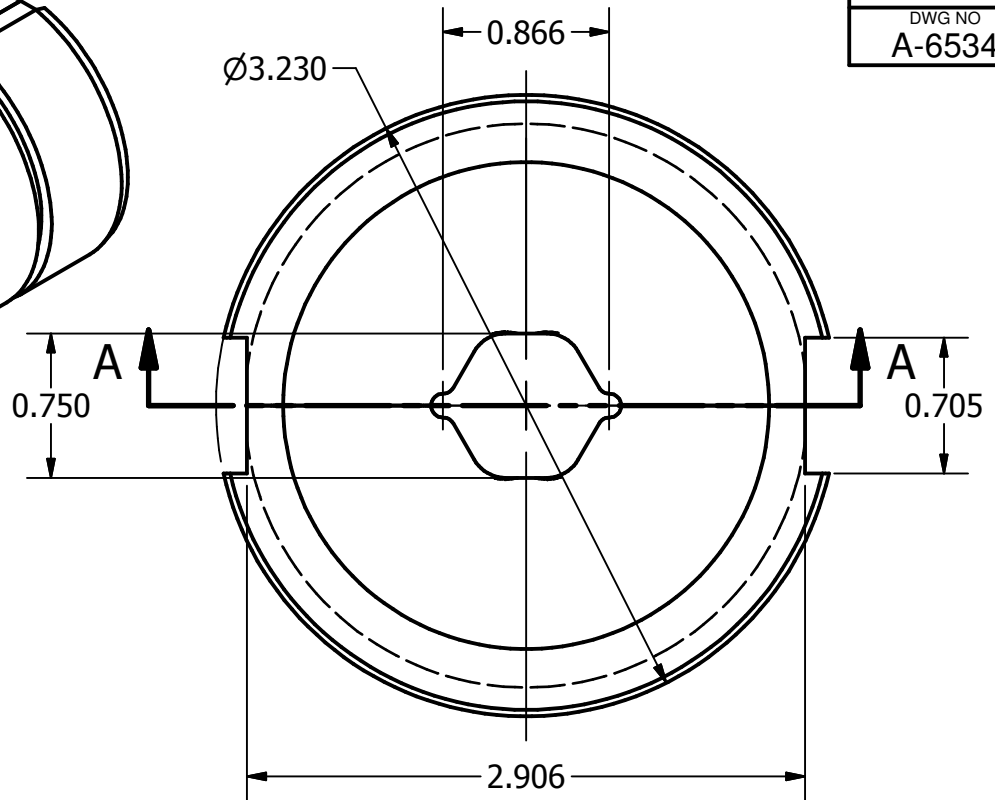
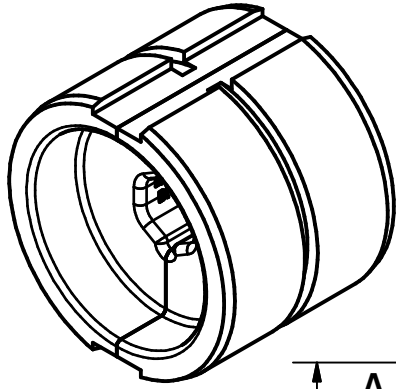


ITEM NO

DWG NO
A-6534



MATERIAL:
CHROME MOLY NICKEL STEEL SAE 4340
BLACK OXIDE FINISH

SECTION A-A

3.38 LBS

THIS DRAWING AND ALL INFORMATION ON IT IS THE PROPERTY OF AFL. IT IS CONFIDENTIAL AND IT IS GIVEN TO YOU FOR A LIMITED PURPOSE AND MUST BE RETURNED UPON REQUEST. NEITHER THIS DRAWING OR ANY PART OF IT NOR ANY INFORMATION CONCERNING IT MAY BE COPIED, EXHIBITED, OR FURNISHED TO OTHERS NOR PHOTOGRAPHS TAKEN OF ANY ARTICLE FABRICATED OR ASSEMBLED FROM THE DRAWING WITHOUT THE CONSENT OF AFL.

LOCATION

CONTRACT NO

CUST / CONTR

REVISIONS

REV	DESCRIPTION	DATE	BY	APR
4	RE-DRAWN IN INVENTOR	2-16-10	LK	EP

DRN BY: SH
DRN DATE: 8-24-82
CHK BY: HJ
CHK DATE: 8-24-82

FAFL

DOSSERT®

DIE, COMPRESSION FOR FTDEC-438

REV
9

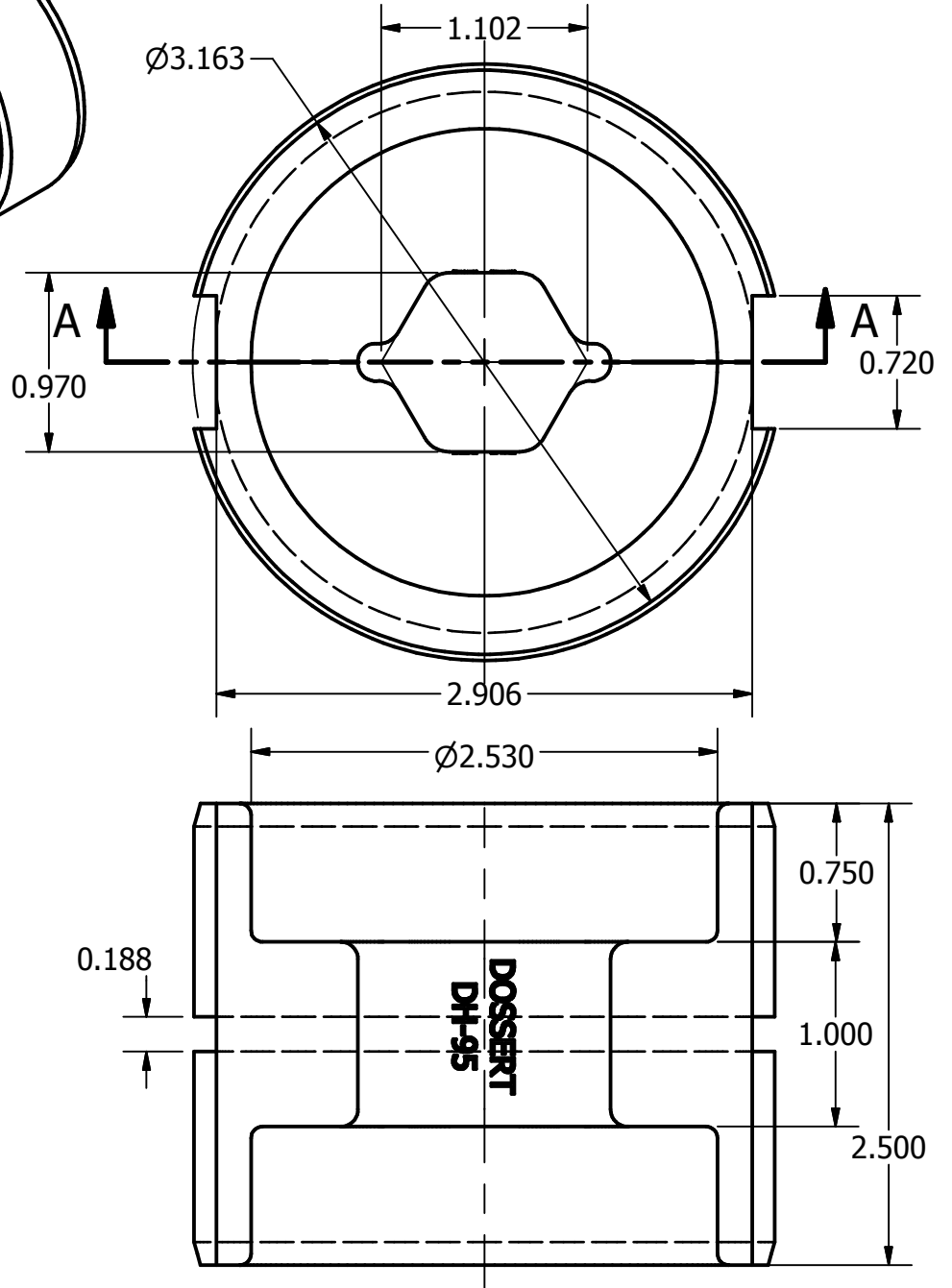
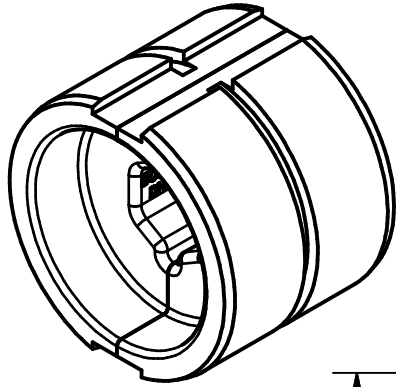
DH74

1 OF 1

ITEM NO

DWG NO
A-7264

THIS DRAWING AND ALL INFORMATION ON IT IS THE PROPERTY OF AFL. IT IS CONFIDENTIAL AND IT IS GIVEN TO YOU FOR A LIMITED PURPOSE AND MUST BE RETURNED UPON REQUEST. NEITHER THIS DRAWING OR ANY PART OF IT NOR ANY INFORMATION CONCERNING IT MAY BE COPIED, EXHIBITED, OR FURNISHED TO OTHERS NOR PHOTOGRAPHS TAKEN OF ANY ARTICLE FABRICATED OR ASSEMBLED FROM THE DRAWING WITHOUT THE CONSENT OF AFL.



MATERIAL:
CHROME MOLY NICKEL STEEL SAE 4340
BLACK OXIDE FINISH

SECTION A-A

3.19 LBS

LOCATION

CONTRACT NO

CUST / CONTR

REVISIONS

REV	DESCRIPTION	DATE	BY	APR
3	RE-DRAWN IN INVENTOR	2-16-10	LK	EP

DRN BY: SH
DRN DATE: 5-12-87
CHK BY: HJ
CHK DATE: 5-12-87

FAFL

DOSSERT®

DIE, COMPRESSION FOR FTDEC-613

REV
3

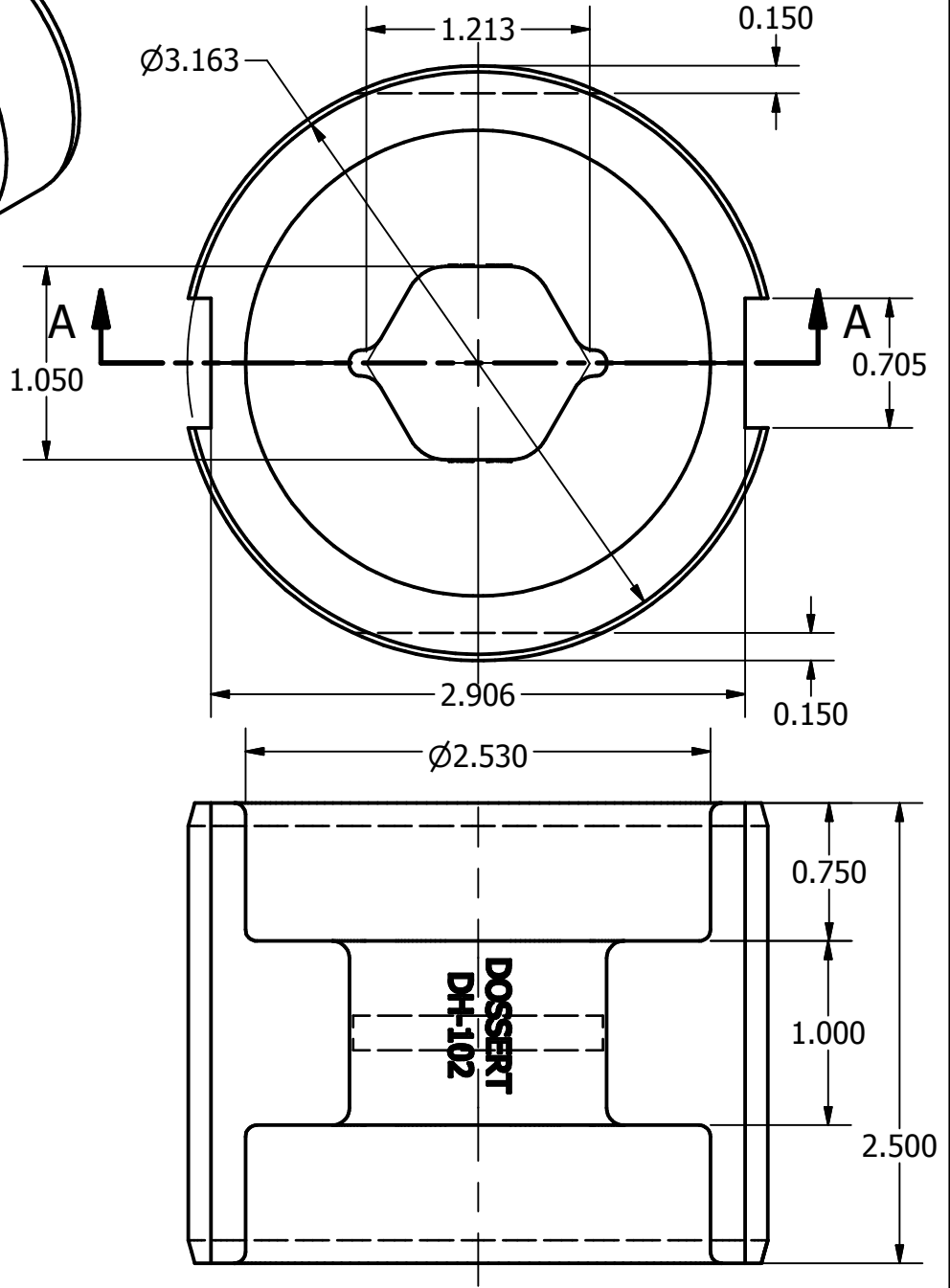
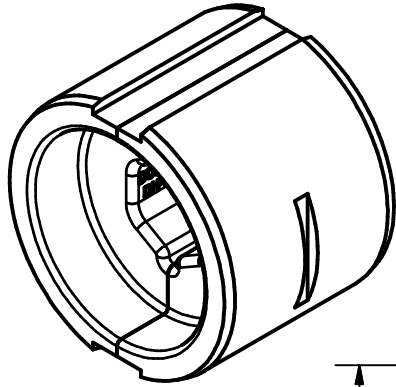
DH95

1 OF 1

ITEM NO

DWG NO
A-7110

THIS DRAWING AND ALL INFORMATION ON IT IS THE PROPERTY OF AFL. IT IS CONFIDENTIAL AND IT IS GIVEN TO YOU FOR A LIMITED PURPOSE AND MUST BE RETURNED UPON REQUEST. NEITHER THIS DRAWING OR ANY PART OF IT NOR ANY INFORMATION CONCERNING IT MAY BE COPIED, EXHIBITED, OR FURNISHED TO OTHERS NOR PHOTOGRAPHS TAKEN OF ANY ARTICLE FABRICATED OR ASSEMBLED FROM THE DRAWING WITHOUT THE CONSENT OF AFL.



SECTION A-A

MATERIAL:
CHROME MOLY NICKEL STEEL SAE 4340
BLACK OXIDE FINISH

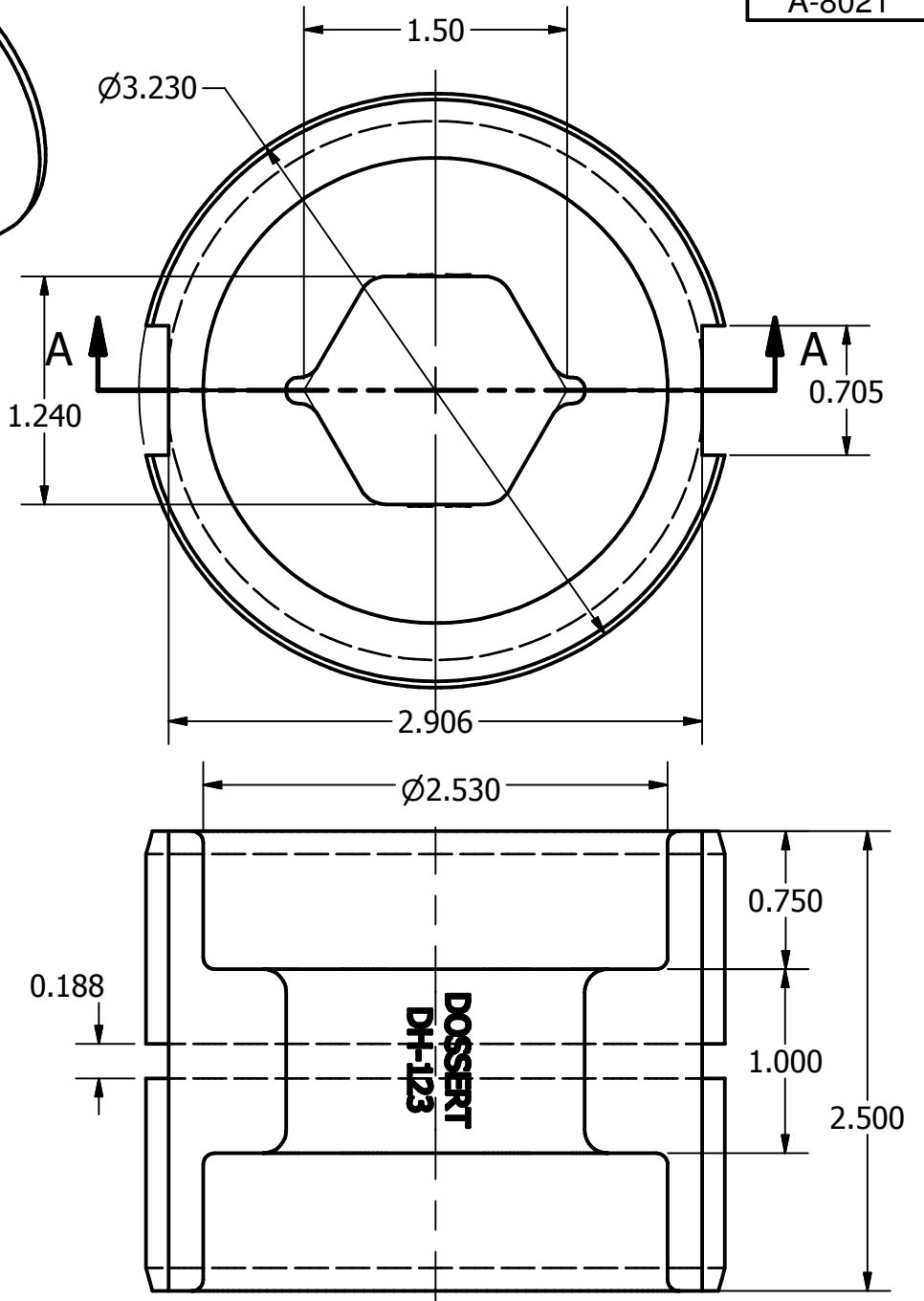
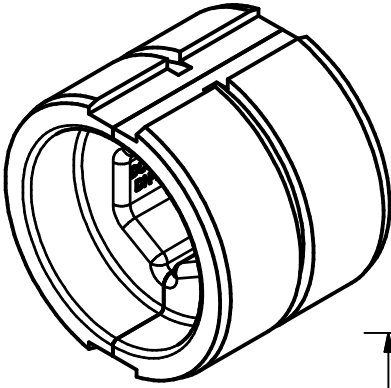
3.21 LBS

LOCATION				CONTRACT NO		CUST / CONTR	
REVISIONS				DRN BY: IP DRN DATE: 4-28-86 CHK BY: HJ CHK DATE: 4-28-86			
REV	DESCRIPTION	DATE	BY	APR			DIE, COMPRESSION FOR FTDEC-642
3	RE-DRAWN IN INVENTOR	2-16-10	LK	EP			
				REV	DH102		1 OF 1

ITEM NO

DWG NO
A-8021


THIS DRAWING AND ALL INFORMATION ON IT IS THE PROPERTY OF AFL. IT IS CONFIDENTIAL AND IT IS GIVEN TO YOU FOR A LIMITED PURPOSE AND MUST BE RETURNED UPON REQUEST. NEITHER THIS DRAWING OR ANY PART OF IT NOR ANY INFORMATION CONCERNING IT MAY BE COPIED, EXHIBITED, OR FURNISHED TO OTHERS NOR PHOTOGRAPHS TAKEN OF ANY ARTICLE FABRICATED OR ASSEMBLED FROM THE DRAWING WITHOUT THE CONSENT OF AFL.



MATERIAL:
CHROME MOLY NICKEL STEEL SAE 4340
BLACK OXIDE FINISH

SECTION A-A

3.05 LBS

LOCATION					CONTRACT NO		CUST / CONTR	
REVISIONS					DRN BY: AG DRN DATE: 3-4-96 CHK BY: RA CHK DATE: 3-4-96			
REV	DESCRIPTION	DATE	BY	APR	 DIE COMPRESSION FOR FTDEC-821			
3	RE-DRAWN IN INVENTOR	2-18-10	LK	EP				
					REV	DH123		1 OF 1