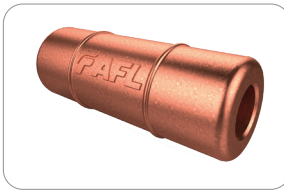


Swage Grounding Accessories

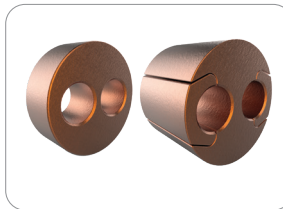
AFL's new line of Swage Grounding Accessories use a compression technology process called "swaging" that enables installation of bus, cable and grounding accessories without the need of a welder. These Swage products allow the electric utility to install the accessories faster and more efficiently with lower installation costs over the welding process.

The complete Swage family includes Bus, Cable and now Grounding Accessories that complement AFL's Substation products which are made for low voltage up to 765 kV applications that involve cable, pipe, flat or tubular bus and integral web connections. With this new line, AFL is your full-line supplier for all types of accessories—welded, bolted and Swage.



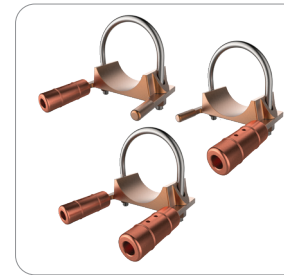
Couplers

SWG C Swage Couplers join two cable or rod runs together. Designed for copper cable that includes #2, #4, 1/0, 2/0, 3/0 and 4/0 AWG and 250, 300, 350 and 500 KCMIL.



Parallels

SWGPE Swage Parallel Connectors are used to connect cable-to-cable or cable-to-rod. The SWGPSE Swage Split Parallel design connects cable to another cable and features a sliding channel for ease of installation.



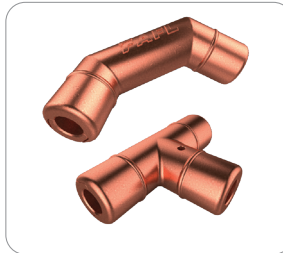
Fence Post Connectors

SWGFP connects cable(s) or rod(s) to a post. Available with left, right or both connection sides.



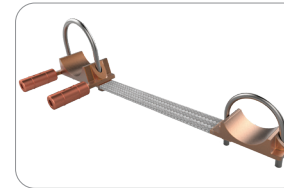
Elbows

Swage Grounding Elbows are available in three designs. The SWGE solid pipe design connects two cable or rod runs at a 90-degree angle to enable grounding on the same run. The SWES split pipe connects a cable or rod at a 90-degree angle to the main run. It also features a sliding channel for ease of installation. SWGEH is an alternate design to connect a cable/rod to another cable or rod.



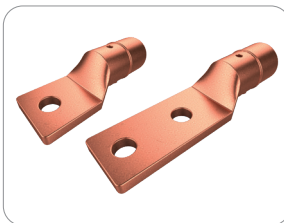
Tee Connectors

SWGTS Swage Tee Connectors connect a cable run to another cable and features a sliding channel for ease of installation. The SWGTOS Swage Offset Single Split Tees connect a cable run to another cable and features a sliding channel used to connect a cable/rod run to another cable/rod.



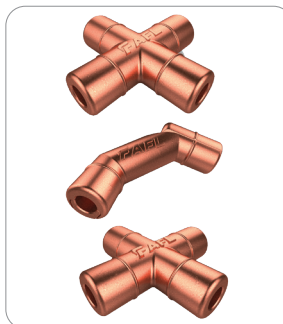
Gate Connectors

SWGFPB is a fence post connector that connects the cable(s) or rod(s) to a fencepost and then to a gate. Available with left, right or both connection sides.



Terminals (1 or 2 Hole)

SWG DPL Swage Terminals are used to ground a cable or a rod to a 1-hole or 2-hole lug. Designed for copper cable that includes #2, #4, 1/0, 2/0, 3/0 and 4/0 AWG and 250, 300, 350, 400 and 500 KCMIL.



Crosses

The SWGX Swage Cross is a four-tap connector cross that connects four cables or rods together. The SWGXH Swage Thru-Hole Cross Connector has a thru-hole run and two taps. SWGXOSS Swage Offset Split Cross connects a cable run to another cable and features two sliding channels for ease of installation.



Swage Tools

AFL offers a line of portable construction and maintenance tools designed to Swage cable and grounding accessories onto a cable. These tools include Swage Press Assemblies, Press Head, Power Unit and Dies.

For More Information

AFL Customer Service, Woody Moore
864-433-5980
Woody.Moore@AFLglobal.com

AFL Technical Support
1-800-890-8878

For an AFL energy market sales representative in your area, visit www.aflglobal.com/en/Contact/Product-Sales-Team.

