

**SWAGE360® TOOLING AND ACCESSORIES**

Founded in 1984, AFL is an international manufacturer providing end-to-end solutions to the energy, service provider, enterprise, hyperscale and industrial markets.

AFL's products are in use in over 130 countries and include fiber optic cable and hardware, transmission and substation accessories, outside plant equipment, connectivity, test and inspection equipment, fusion splicers and training.

AFL also offers a wide variety of services supporting data center, enterprise, wireless and outside plant applications.

AFL is dedicated to bringing our customers a quality product as well as delivering superior value.



COMPANY WITH  
QUALITY SYSTEM  
CERTIFIED BY DNV GL  
= ISO 9001 =

# Table of Contents

Pictorial Index .....2  
 Swage Tooling Cross Reference.....3

## Tooling

### Grounding and Bus Tools

115TPUHAD Swage 115 Ton Press Assembly.....4  
 85TPUHAD Swage 85 Ton Press Assembly.....5  
 65TPUHAD Swage 65 Ton Press Assembly.....6  
 65THA Swage 65 Ton Press Head.....7  
 65TPU Swage 65 Ton Power Unit.....8  
 65TD Swage 65 Ton Die Set.....9  
 SWGGB Swage Inspection Gauge.....10

### Cable Tools

45TPUHAD Swage 45 Ton Press Assembly.....11  
 45THA Swage 45 Ton Press Head.....12  
 45TPU Swage 45 Ton Power Unit.....13  
 45TD Swage 45 Ton Die Set.....14  
 SWGGC Swage Cable Gauge.....15

## Tooling Accessories

### Accessories

SWGRS Swage Grease.....16  
 AFL Filler Compound.....17

### Pumps and Hoses

PE-NUT Electric Two-Speed Pump.....18  
 15GBM Gas Hydraulic Pump.....19  
 30GBM Gas Hydraulic Pump.....20  
 30GHR Gas Hydraulic Pump.....21  
 Hydraulic Hoses.....22

## Installation Instructions

Swage Tool Assembly and Overview Instructions.....23  
 Swage Tool Maintenance Instructions.....25

## Swage Tools and Accessories

Bus Tools	
	115TPUHAD PG. 4
	85TPUHAD PG. 5
	65TPUHAD PG. 6
	65THA PG. 7
	65TPU PG. 8
	65TD PG. 9
	SWGGB PG. 10

Cable and Grounding Tools	
	45TPUHAD PG. 11
	45THA PG. 12
	45TPU PG. 13
	45TD PG. 14
	SWGGC PG. 15

Accessories	
	SWGRS PG. 16
	AFL Filler Compound PG. 17
Pumps and Hoses	
	PE-NUT Electric Two-Speed Pump PG. 18
	15GBM Gas Hydraulic Pump PG. 19
	30GBM Gas Hydraulic Pump PG. 20
	30GHR Gas Hydraulic Pump PG. 21
	Hydraulic Hoses PG. 22

# Swage Tooling Cross Reference

## BUS—1" TO 6" PIPE SIZES

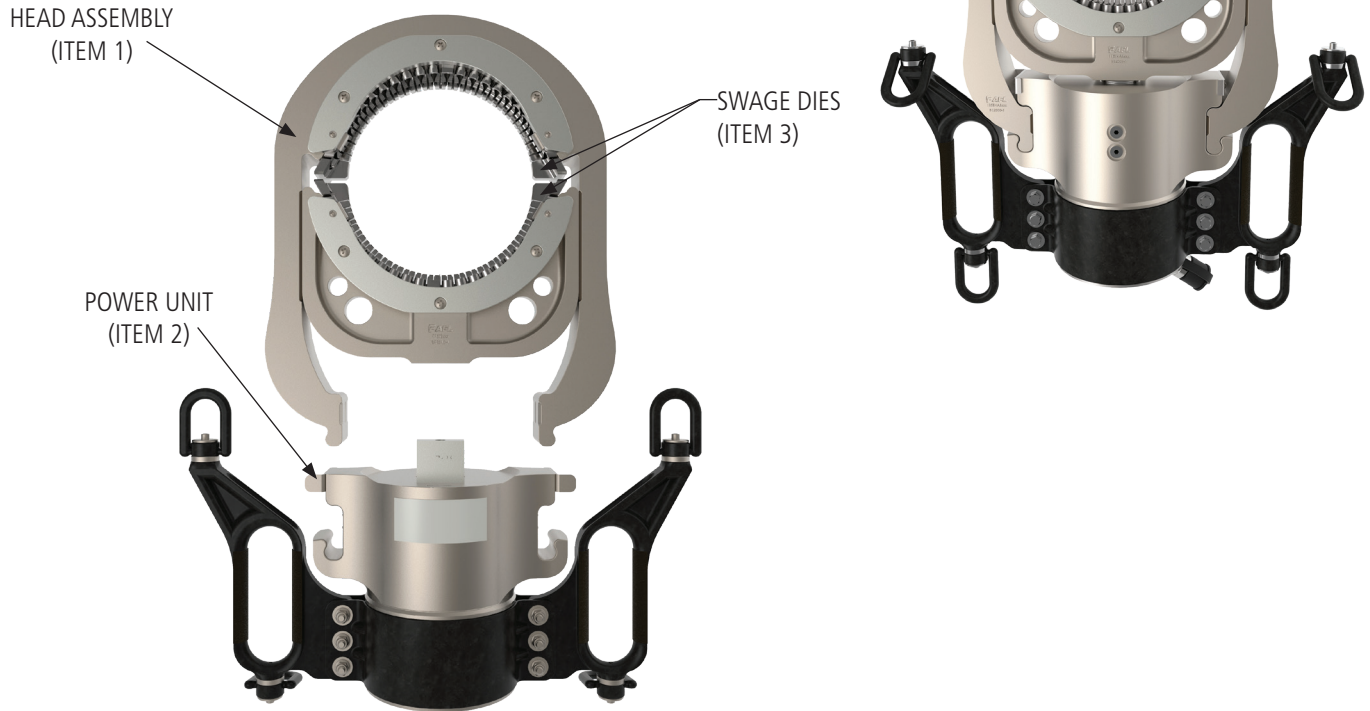
NOMINAL PIPE SIZE	AFL HEAD ASSEMBLY	DMC HEAD ASSEMBLY	DIES		INSPECTION GAUGE		POWER UNIT	
			AFL	DMC	AFL	DMC	AFL	DMC
1	65THAD100	DLT65PLHA0016 OR DLT57PLHA0016	65TD100	DLT56PLDI0016	SWGGB100	PLKIG2000-16	65TPU	DLT58MAPW0000 OR DLT65MAPW0000 Depending on Head Assembly Used
1.5	65THAD150	DLT65PLHA0024 OR DLT57PLHA0024	65TD150	DLT56PLDI0024	SWGGB150	PLKIG2000-24		
2	65THAD200	DLT65PLHA0032 OR DLT57PLHA0032	65TD200	DLT56PLDI0032	SWGGB200	PLKIG2000-32		
2.5	65THAD250	DLT65PLHA0040 OR DLT57PLHA0040	65TD250	DLT56PLDI0040	SWGGB250	PLKIG2000-40		
3	65THAD300	DLT65PLHA0048 OR DLT57PLHA0048	65TD300	DLT56PLDI0048	SWGGB300	PLKIG2000-48		
3.5	65THAD350	DLT65PLHA0056	65TD350	DLT65PLDI0056	SWGGB350	PLKIG2000-56		
4	65THAD400	DLT65PLHA0064	65TD400	DLT65PLDI0064	SWGGB400	PLKIG2000-64	DLT65MAPW0000	
5	85THA500	DLT85PLHA0080	85TD500	DLT85PLDI0080	SWGGB500	PLKIG2000-80	85TPU	DLT86MAPW000
6	115THA600	PLT115PLTA0000	115TD600	DLT115PLDI0096	SWGGB600	PLKIG2000-96	115TPU	PLT115MAPE1000

## CABLE—1" TO 2.75" O.D. FITTING SIZE

FITTING O.D. (inches)	AFL HEAD ASSEMBLY	DMC HEAD ASSEMBLY	DIES		FILLER DIES		INSPECTION GAUGE		POWER UNIT	
			AFL	DMC	AFL	DMC	AFL	DMC	AFL	DMC
1	45THAD16	DLT45CLHA02500	45TD16	DLT45CLDI02500	—	—	SWGGC16	DLT45CLIG02500	45TPU	DLT45MAPW0000
1.25	45THAD20	DLT45CLHA03975	45TD20	DLT45CLDI03975	—	—	SWGGC20	DLT45CLIG03975		
1.5	45THAD24	DLT45CLHA05565	45TD24	DLT45CLHA05565	B11336-15	DLT45CLFDI08745	SWGGC24	DLT45CLIG05565		
1.75	45THAD28	DLT45CLHA07155	45TD28	DLT45CLDI07155	B11336-15	DLT45CLFDI08745	SWGGC28	DLT45CLIG07155		
1.875	45THAD30	DLT45CLHA08745	45TD30	DLT45CLDI08745	B11336-15	DLT45CLFDI08745	SWGGC30	DLT45CLIG08745		
2	45THAD32	DLT45CLHA11130	45TD32	DLT45CLDI11130	—	—	SWGGC32	DLT45CLIG11130		
2.25	45THAD36	DLT45CLHA15900	45TD36	DLT45CLDI15900	—	—	SWGGC36	DLT45CLIG15900		
2.75	65THAD44-L	DLT58CLHA25000	65TD44-L	DLT58CLDI25000	—	—	SWGGC44	DLT45CLIG25000	65TPU	DLT58MAPW0000

# 115TPUHAD Swage 115 Ton Press Assembly

A Swage 115 Ton Press Assembly is a portable construction and maintenance tool designed to Swage 6-inch bus accessories onto a bus. The power unit works with the 6-inch Head Assembly. The Catalog Number below provides everything needed for 6-inch pipe.

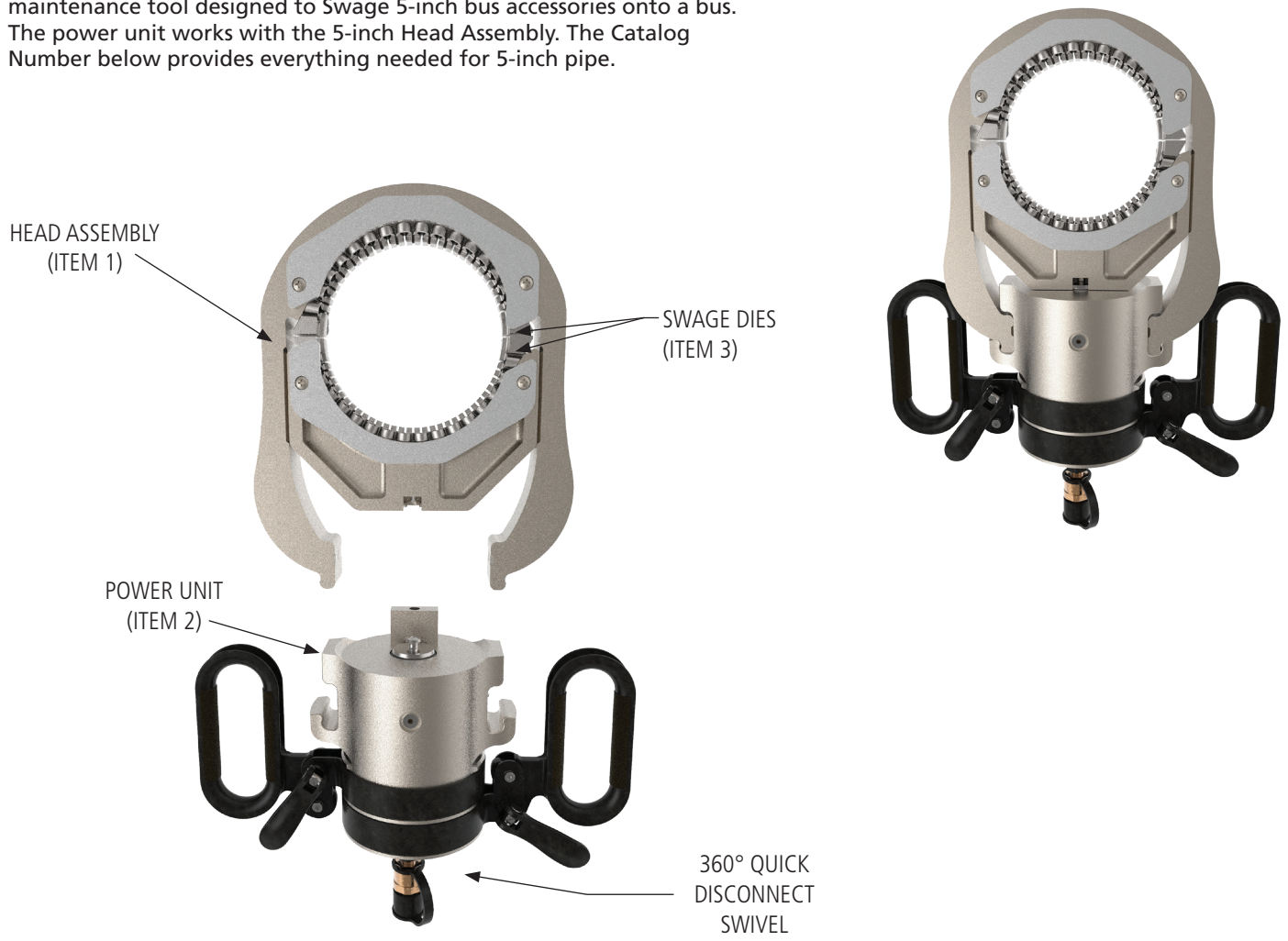


## Ordering Information

AFL NO.	S.P.S.	ITEM 1	ITEM 2	ITEM 3	ITEM 4
		PRESS HEAD	POWER UNIT	DIE	INSPECTION GAUGE
115TPUHAD600	6	115THA600	115TPU	115TD600	SWGGB600

# 85TPUHAD Swage 85 Ton Press Assembly

A Swage 85 Ton Press Assembly is a portable construction and maintenance tool designed to Swage 5-inch bus accessories onto a bus. The power unit works with the 5-inch Head Assembly. The Catalog Number below provides everything needed for 5-inch pipe.

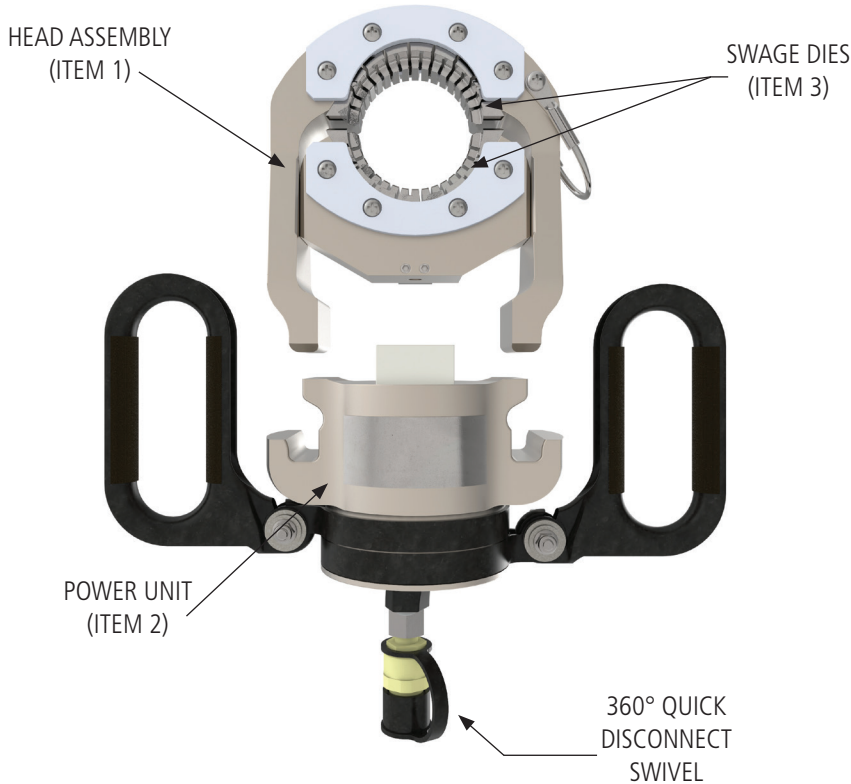


## Ordering Information

AFL NO.	S.P.S.	ITEM 1 PRESS HEAD	ITEM 2 POWER UNIT	ITEM 3 DIE	ITEM 4 INSPECTION GAUGE
85TPUHAD500	5	85THA500	85TPU	85TD500	SWGGB500

# 65TPUHAD Swage 65 Ton Press Assembly

A Swage 65 Ton Press Assembly is a portable construction and maintenance tool designed to Swage bus and cable accessories onto a bus pipe or cable. The power unit works with 1" through 4" Head Assemblies. The Catalog Number below provides everything needed for each pipe size. For more sizes, order extra press heads and dies from the Head and Dies section.



## Ordering Information

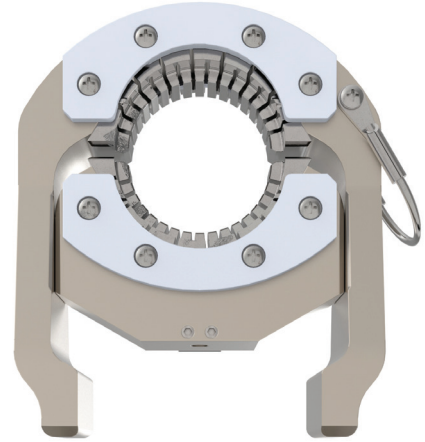
AFL NO.	S.P.S.	ITEM 1	ITEM 2	ITEM 3	ITEM 4
		PRESS HEAD	POWER UNIT	DIE	INSPECTION GAUGE
65TPUHAD100	1	65THA200-L	65TPU-L	65TD100	SWGGB100
65TPUHAD150	1.5			65TD150	SWGGB150
65TPUHAD200	2			65TD200	SWGGB200
65TPUHAD44	2.75 O.D.			65TD44L	SWGGC44
65TPUHAD250	2.5	65THA300		65TD250	SWGGB250
65TPUHAD300	3			65TD300	SWGGB300
65TPUHAD350	3.5	65THA400		65TD350	SWGGB350
65TPUHAD400	4			65TD400	SWGGB400

# 65THA Swage 65 Ton Press Head

A Swage 65 Ton Press Head comes with the Press Head, Die Block, Die Retainers and mounting screws. There are three different press heads that fit different dies.

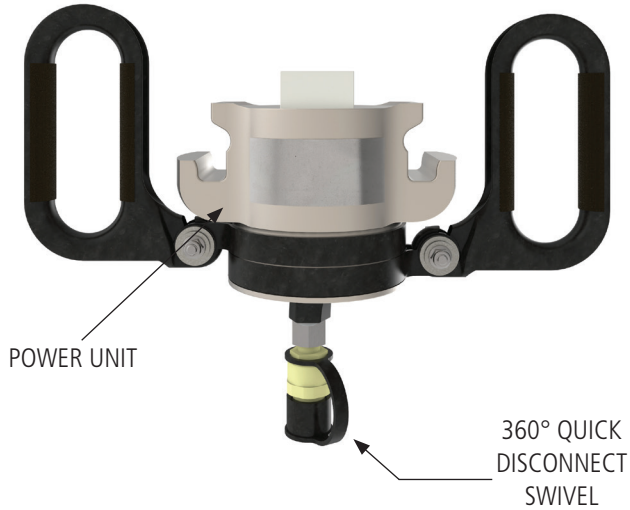
## Ordering Information

AFL NO.	S.P.S.	DIE SIZE
65THA200-L	1	65TD100
	1.5	65TD150
	2	65TD200
	2.75 O.D.	65TD44L
65THA300	2.5	65TD250
	3	65TD300
65THA400	3.5	65TD350
	4	65TD400



# 65TPU Swage 65 Ton Power Unit

A Swage 65 Ton Power Unit is a 65 ton construction and maintenance tool designed to cover a full range of Swage accessories which works with 2" through 4" Head Assemblies. The 65TPU features a 360 degree hose swivel for ease of movement for the user to make the Swage process quick and easy.



## Ordering Information

AFL NO.	S.P.S.	DIE SIZE
65TPU-L	1	65TD100
	1.5	65TD150
	2	65TD200
	2.75 O.D.	65TD44L
	2.5	65TD250
	3	65TD300
	3.5	65TD350
	4	65TD400

## 65TD Swage 65 Ton Die Set

A Swage 65 Ton Die Set comes with two dies per pipe size. These dies are available in 1", 1.5", 2", 2.5", 2.75" O.D., 3", 3.5" and 4" dies. Not all dies fit one press head—ensure you have the correct head assembly for the size dies needed.

### Ordering Information

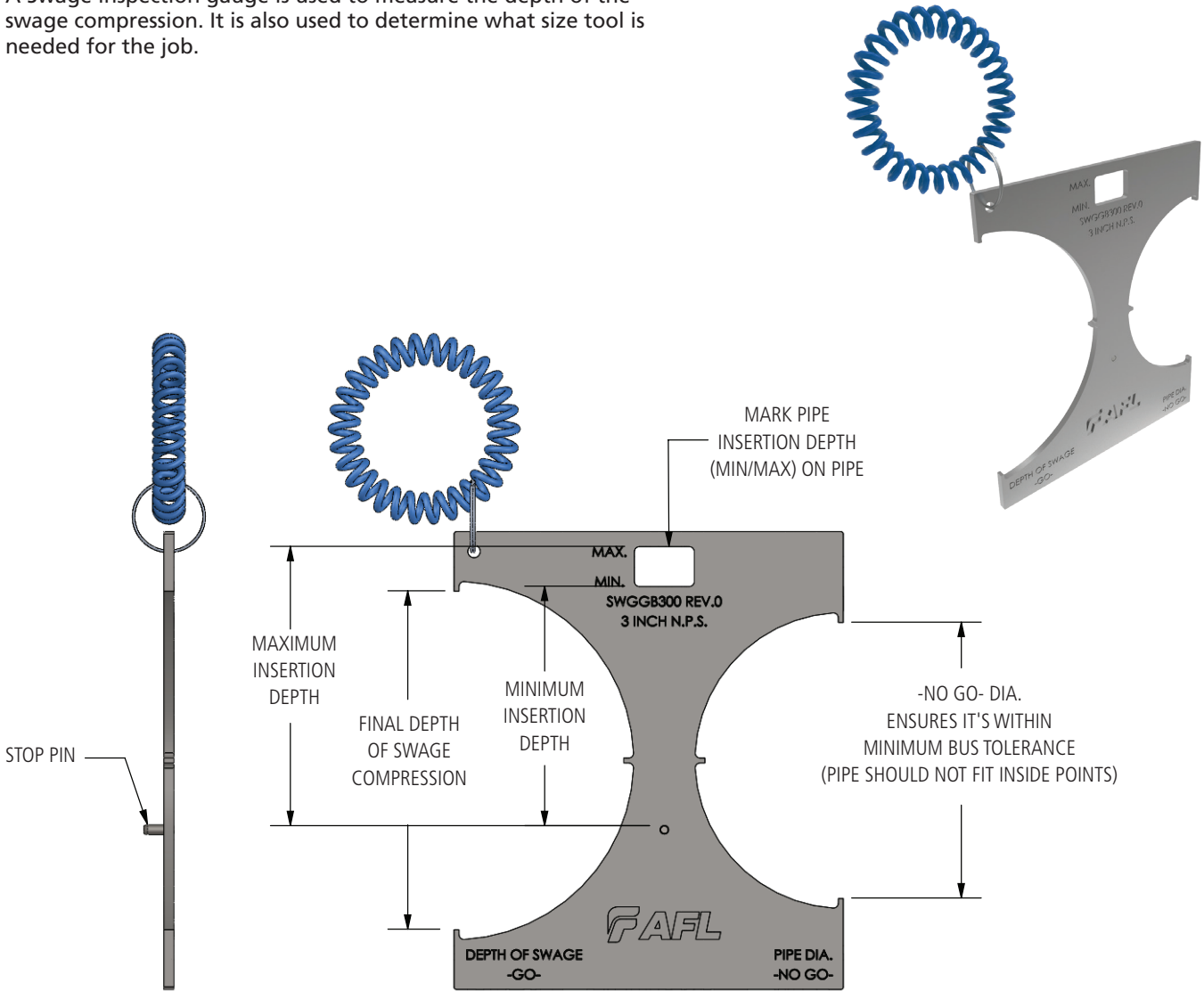
AFL NO.	S.P.S.	COMPATIBLE WITH PRESS HEAD	DIE SIZE
<b>Dies for Swage Grounding and Cable Accessories</b>			
65TD44L	2.75 O.D.	65THA200-L	65TD44L
<b>Dies for Swage Bus Accessories</b>			
65TD100	1	65THA200-L	65TD100
65TD150	1.5		65TD150
65TD200	2		65TD200
65TD250	2.5	65THA300	65TD250
65TD300	3		65TD300
65TD350	3.5	65THA400	65TD350
65TD400	4		65TD400

**Note:** 2.75" O.D. is for Swage Grounding and Cable Accessories.



# SWGGB Swage Inspection Gauge for Bus Pipe

A Swage inspection gauge is used to measure the depth of the swage compression. It is also used to determine what size tool is needed for the job.



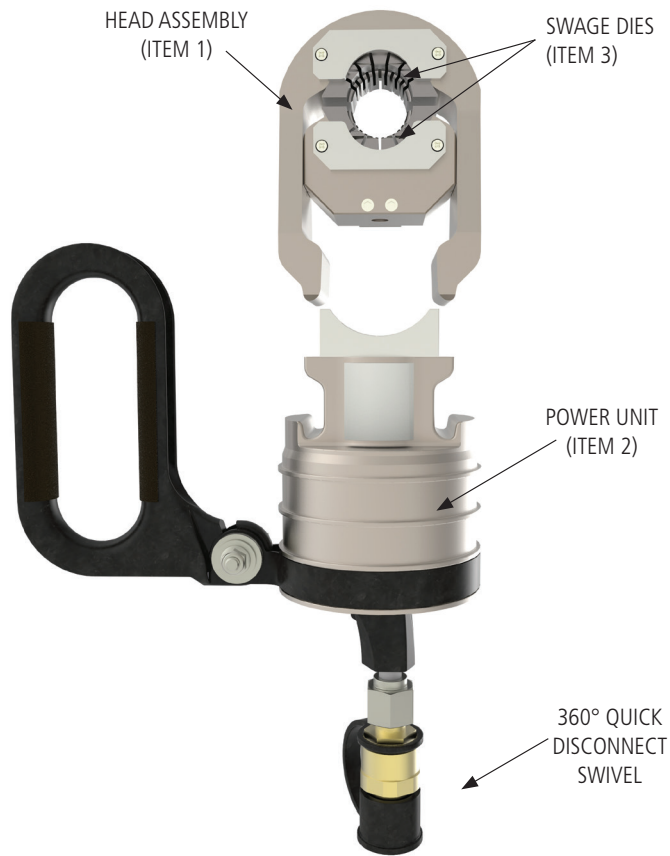
## Ordering Information

AFL NO.	S.P.S.	DEPTH OF INSERTION		DIE SIZE
		MIN.	MAX.	
SWGGB100	1	1.5	2	65TD100
SWGGB150	1.5	1.5	2	65TD150
SWGGB200	2	2	2.5	65TD200
SWGGB250	2.5	2	2.5	65TD250
SWGGB300	3	3	3.5	65TD300
SWGGB350	3.5	3	3.5	65TD350
SWGGB400	4	3	3.5	65TD400
SWGGB500	5	5	5.75	85TD500
SWGGB600	6	6	6.75	115TD600

**Note:** Not used for Swage Grounding and Cable Accessories.

# 45TPUHAD Swage 45 Ton Press Assembly

A Swage 45 Ton Press Assembly is a portable construction and maintenance tool designed to Swage cable and grounding accessories onto a cable. The power unit works with 1.00" O.D. through 2.25" O.D. Head Assemblies. The Catalog Number below provides everything needed for each size. For more sizes, order extra press heads and dies from the Head and Dies section.



SWGCC INSPECTION GAUGE  
(PURCHASED SEPARATELY)

## Ordering Information

AFL NO.	FITTING O.D. (inches)	ITEM 1	ITEM 2	ITEM 3	ITEM 4	ITEM 5
		PRESS HEAD	POWER UNIT	DIE	FILLER DIE	INSPECTION GAUGE
45TPUHAD16	1.00	45THA20	45TPU	45TD16	—	SWGCC16
45TPUHAD20	1.25	45THA20	45TPU	45TD20	—	SWGCC20
45TPUHAD24	1.50	45THA36	45TPU	45TD24*	B11336-15	SWGCC24
45TPUHAD28	1.75	45THA36	45TPU	45TD28*	B11336-15	SWGCC28
45TPUHAD30	1.88	45THA36	45TPU	45TD30*	B11336-15	SWGCC30
45TPUHAD32	2.00	45THA36	45TPU	45TD32	—	SWGCC32
45TPUHAD36	2.25	45THA36	45TPU	45TD36	—	SWGCC36

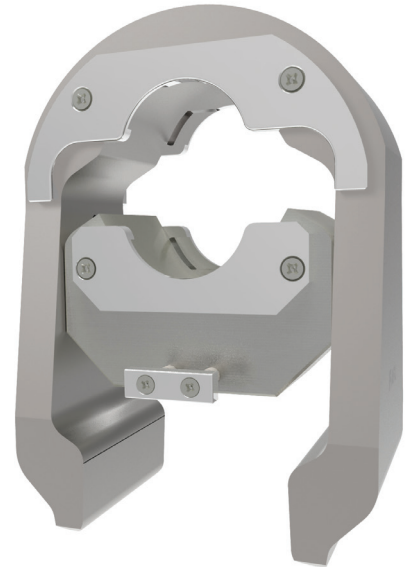
\* Filler die is required for this die size.

## 45THA Swage 45 Ton Press Head

A Swage 45 Ton Press Head comes with the Press Head, Die Block, Die Retainers and mounting screws. There are two different press heads that fit different dies.

### Ordering Information

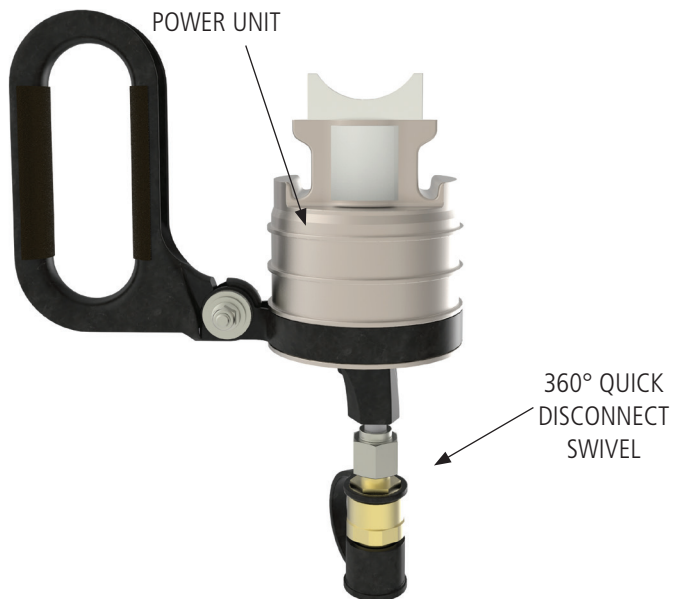
AFL NO.	FITTING O.D. (inches)	DIE SIZE	FILLER DIE
45THA20	1.00	45TD16	—
	1.25	45TD20	—
	1.50	45TD24	B11336-15
45THA36	1.75	45TD28	B11336-15
	1.88	45TD30	B11336-15
	2.00	45TD32	—
	2.25	45TD36	—



# 45TPU Swage 45 Ton Power Unit

A Swage 45 Ton Power Unit is a 45 Ton construction and maintenance tool designed to cover a full range of Swage cable and grounding accessories.

The power unit works with 1.00" O.D. through 2.25" O.D. Head Assemblies. The 45TPU features a 360-degree hose swivel for ease of movement for the user to make the Swage process quick and easy.



## Ordering Information

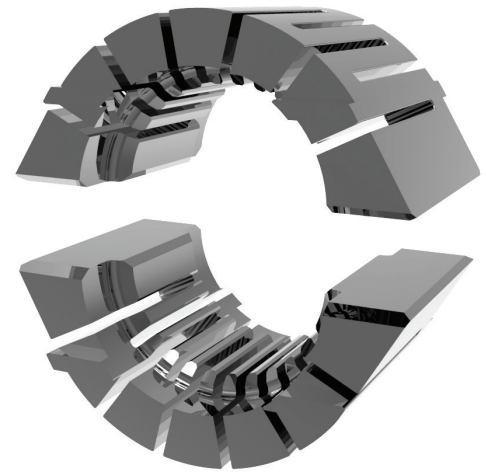
AFL NO.	FITTING O.D. (inches)	DIE SIZE
45TPU	1.000	45TD16
	1.250	45TD20
	1.500	45TD24
	1.750	45TD28
	1.875	45TD30
	2.000	45TD32
	2.250	45TD36

## 45TD Swage 45 Ton Die Set

A Swage 45 Ton Die Set comes with two dies per pipe size. Not all dies fit one press head—ensure you have the correct head assembly for the size dies needed.

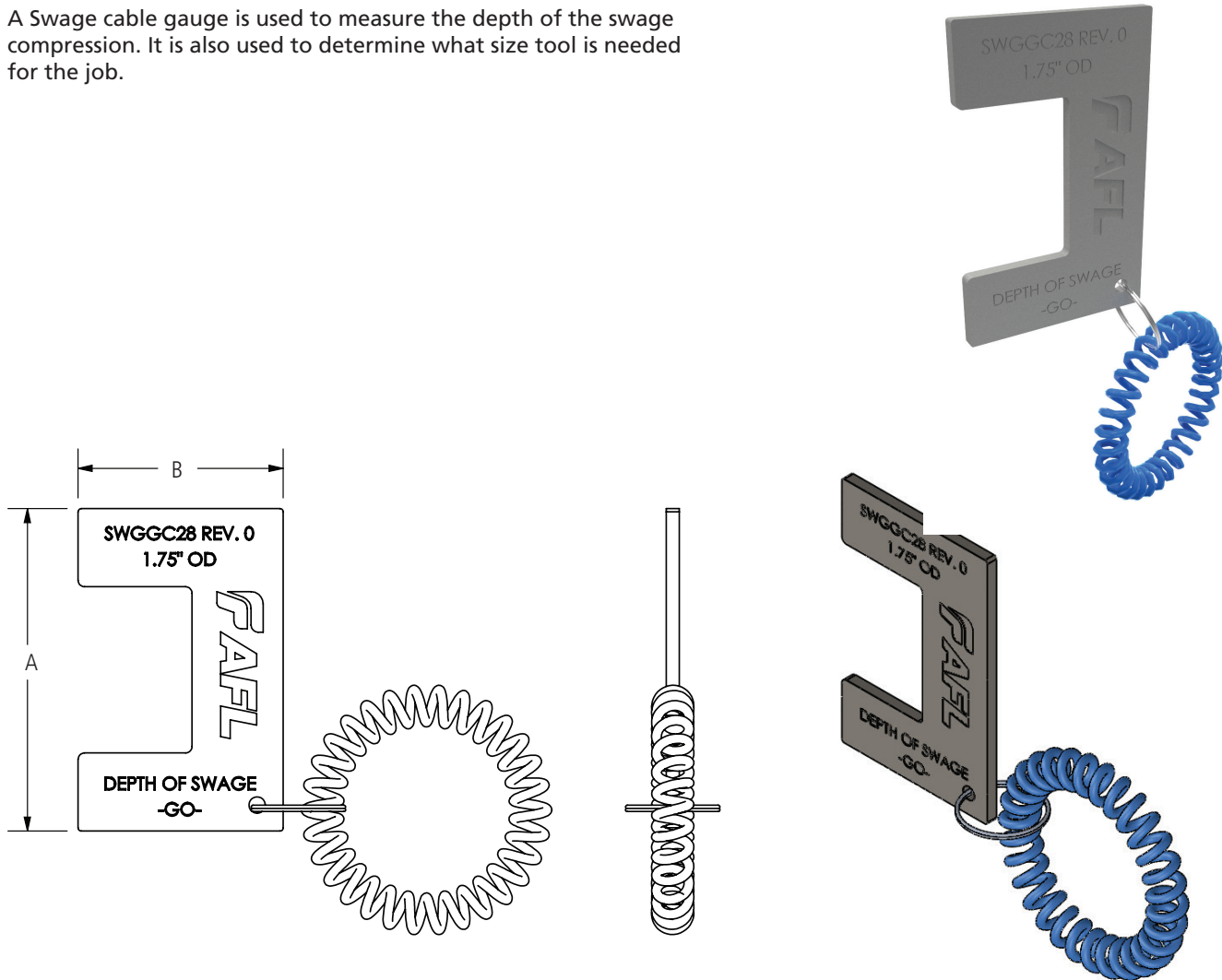
### Ordering Information

AFL NO.	FITTING O.D. (inches)	COMPATIBLE WITH PRESS HEAD	DIE SIZE	FILLER DIE
45TD16	1.000	45THA20	45TD16	—
45TD20	1.250	45THA20	45TD20	—
45TD24	1.500	45THA36	45TD24	B11336-15
45TD28	1.750	45THA36	45TD28	B11336-15
45TD30	1.875	45THA36	45TD30	B11336-15
45TD32	2.000	45THA36	45TD32	—
45TD36	2.250	45THA36	45TD36	—



# SWGGC Swage Cable Gauge

A Swage cable gauge is used to measure the depth of the swage compression. It is also used to determine what size tool is needed for the job.



## Ordering Information

AFL NO.	FITTING O.D. (inches)	DIE SIZE
SWGGC16	1	45TD16
SWGGC20	1.25	45TD20
SWGGC24	1.5	45TD24
SWGGC28	1.75	45TD28
SWGGC30	1.875	45TD30
SWGGC32	2	45TD32
SWGGC36	2.25	45TD36
SWGGC44	2.75	65TD44

# SWGRS

## Swage Grease, 4 oz. bottle

Swage Grease is used to cut down on friction and contact between the Swage Dies and the Press Head and Die Block. This will ensure long life for dies, press head and die block.

### Application

Swage Grease is applied generously to the back of each die and to the contacting surfaces of the die head and die block using the squirt bottle. After application, spread out grease with finger to ensure complete coverage is achieved between the surfaces.

**NOTE:** Apply Swage Grease each time after cleaning tool.



### Ordering Information

AFL NO.	Description
SWGRS	Swage Grease, 4 oz. bottle

# AFL Filler Compound

AFL Filler Compound (AFC) improves the mechanical holding strength and conductivity of compression fittings. Stored in a dry environment, AFC has an infinite shelf life.

## Applications

Filler compound for compression accessories operating at temperatures up to 180°C (355°F). Example: dead ends, compression joints, terminals and jumper connectors.

## Features

### Wide Temperature Tolerance

AFC is stiff but workable at low temperatures. To improve the workability, AFC can be diluted with 5% kerosene (by weight).

### Improves Holding Strength and Conductivity

AFC contains hard, metallic particles (grit). During compression, the grit is embedded between the conductor and the accessory, creating an irregular surface which provides two benefits: (1) increases the holding strength when tension is applied and (2) improves conductivity by breaking the oxide layer on bare metal to metal connections.

### Weather Resistant

AFC is forced between the conductor strands during compression, filling voids and sealing out the harmful effects of air and moisture.

### Fits Standard Caulking Gun

For easy filling of compression accessories, AFC is available in a tube that fits a standard caulking gun.

### Visible Fill Line

AFL is the only supplier that features a visible fill line along the length of the cartridge which allows the user to visually check the fullness of the tube.



## Ordering Information

AFL No.	Packaging
AFC10T	Carton of 10, 1 lb. (451 g) Tubes – Fits Standard Caulking Gun
AFC1GAL	1 Gallon Pail, 11 lbs. (5 kg)
AFC5GAL	5 Gallon Pail, 55 lbs. (25 kg)

For more information, contact the AFL Technical Support Team at 1.800.890.8878.

# PE-NUT Electric Two-Stage Pump

The PE-NUT Electric Two-Stage Pump is extremely durable yet lightweight. It will operate under low-line voltage conditions. The two-stage pumping system of this unique, intermittent-duty pump is designed for years of dependable service. The PE-NUT pump is ideal for running any 10,000 PSI tool up to and including the 60 ton press.

## Features

- 5/8 HP universal electric motor (50/60 cycle)
- Two-stage pump for rapid ram advance
- Operational under low-line voltage conditions
- Optional operating pressures available; consult AFL for details
- Designed for use with spring-returned remote tools
- High-pressure safety relief valve
- Remote hand control with 10-foot cord
- Carrying handle
- Factory filled oil reservoir
- Pressure matched quick-coupler supplied
- Optional carrying case
- Unique, intermittent duty pump
- Piston-type high-pressure pump supercharged by a low-pressure pump



**CAUTION: Designed for Crimping Application Only! This system should not be used for lifting.**

## Specifications

PARAMETER	VALUE
Electric Motor	5/8 HP dual phase, 115 VAC, 50/60 Hz, 11 amps
Electric Control	Remote control with 10-foot cord
Oil Delivery per minute	160 cu. in. per min. @ 100 PSI 30 cu. in. per min. @ 10,000 PSI
Oil Reservoir	0.4 gallon (1.5 liters)
Overall Length	14.38 in (36.53 cm)
Overall Width	6.5 in (16.51 in)
Overall Height	8.25 in (20.95 in)
Pump Weight with oil	28 lbs (12.70 kg)

## Ordering Information

AFL NO.	DESCRIPTION
PE-NUTC	10,000 PSI Electric Two-Stage Pump with Remote Control and Case

WARNING: Do not operate any compression tool without dies.

# 15GBM Gas Hydraulic Pump

The 15GBM is a gas powered pump that produces 10,000 PSI of hydraulic pressure. It is designed to handle any high pressure tool up to and including the 60 ton press. The two-stage pumping system allows for rapid ram advance. The "suc-o-matic" valve helps tools retract faster. The manual control has three settings: advance, hold and retract. Whether making one crimp or 1,000 crimps, the 15GBM is the lightweight, portable answer.

## Features

- 10,000 PSI high-pressure pump
- Powered by a 3.75 HP Briggs and Stratton engine
- Manual control valve
- Designed to operate single acting tools
- High pressure relief valve
- Pressure matched quick coupler supplied
- Protective carrying cage
- "Suc-o-matic" valve reduces retraction time
- Sight gauge to determine hydraulic oil level

## Technical Data

PARAMETER	VALUE
Gas Powered Motor	3.75 HP Briggs and Stratton Engine
Control	Manual control valve
Oil Delivery per minute	400 cu in @ 600 PSI 50 cu in @ 10,000 PSI
Oil Reservoir	2 gallons (7.40 liters)
Overall Length	12.25 in (31.12 cm)
Overall Width	12.25 in (31.13 cm)
Overall Height	20.25 in (51.44 cm)
Pump Weight with oil	53 lbs (24.09 kg)

## Ordering Information

AFL NO.	DESCRIPTION
15GBM	10,000 PSI Gas Powered Hydraulic Pump with Manual Control



**WARNING: Do not operate any compression tool without dies.**

# 30GBM Gas Hydraulic Pump

The 30GBM is a gas powered pump that produces 10,000 PSI of hydraulic pressure. It is designed to operate any 10,000 PSI compression tool. The two-stage pumping system allows for rapid ram advance. The "suc-o-matic" valve helps tools retract faster. The manual control has three settings: advance, hold and retract. The 30GBM is designed for continuous duty.

## Features

- 10,000 PSI high-pressure pump
- Powered by a 6 HP Briggs and Stratton engine
- Manual control valve
- Designed to operate single acting tools only
- High pressure relief valve
- Pressure matched quick coupler supplied
- Protective carrying cage
- Sight gauge to determine hydraulic oil level



## Technical Data

PARAMETER	VALUE
Gas Powered Motor	6.0 HP Briggs and Stratton Engine
Control	Manual control valve
Oil Delivery per minute	430 cu in @ 400 PSI 125 cu in @ 10,000 PSI
Oil Reservoir	2 gallons (7.40 liters)
Overall Length	21.75 in (55.25 cm)
Overall Width	19.75 in (50.17 cm)
Overall Height	24.50 in (62.23 cm)
Pump Weight with oil	135 lbs (61.36 kg)

## Ordering Information

AFL NO.	DESCRIPTION
30GBM	10,000 PSI Gas Powered Hydraulic Pump with Manual Control

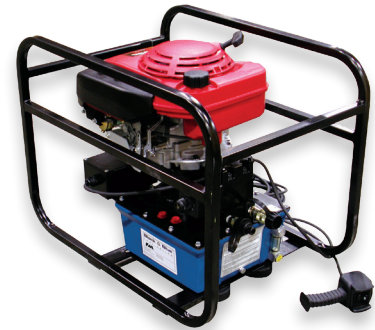
**WARNING: Do not operate any compression tool without dies.**

# 30GHR Gas Hydraulic Pump

The 30GHR is a gas powered pump that produces 10,000 PSI of hydraulic pressure. The two-stage pumping system allows for rapid ram advance. The unloading pressure of the pump is 1,000 PSI. The 30GHR comes with a remote control with a 10 foot cord and is designed for continuous duty.

## Features

- 10,000 PSI high-pressure pump
- Powered by a 5.5 HP Honda engine
- Remote control with 10 foot cord
- Designed to operate single acting and double acting tools
- High-pressure relief valve
- Pressure matched quick coupler supplied
- Protective carrying cage
- Sight gauge to monitor hydraulic oil level



## Technical Data

PARAMETER	VALUE
Gas Powered Motor	5.5 HP Honda Engine
Control	Remote Control with 10 foot cord
Oil Delivery per minute	430 cu in @ 400 PSI 125 cu in @ 10,000 PSI
Oil Reservoir	2 gallons (7.40 liters)
Overall Length	21.75 in (55.25 cm)
Overall Width	19.75 in (50.17 cm)
Overall Height	24.50 in (62.23 cm)
Pump Weight with oil	135 lbs (61.36 kg)

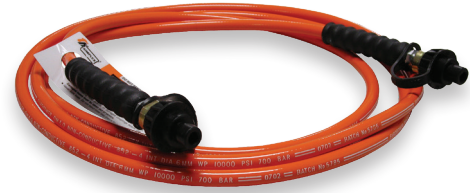
## Ordering Information

AFL NO.	DESCRIPTION
30GHR	10,000 PSI Gas Powered Hydraulic Pump with Remote Control

**WARNING: Do not operate any compression tool without dies.**

## Hydraulic Hoses

The 1/4" (0.635 cm) non-conductive, orange hose is made of an insulated, synthetic material. It allows a high flow rate for faster ram movement. Hoses are available with or without couplers for operating pressures of 10,000 PSI with a 4 to 1 burst ratio. Hoses are pre-filled with oil and pressure tested. The hoses are 3/8" NPT male thread on both ends and quick disconnects are 3/8" NPT female.



### Ordering Information

AFL NO.	DESCRIPTION
6HOSEM/F	6 Foot Hose with Male/female Couplers (1.83 Meters)
6HOSEM/M	6 Foot Hose with Male/male Couplers (1.83 Meters)
10HOSEM/F	10 Foot Hose with Male/female Couplers (3.04 Meters)
10HOSEM/M	10 Foot Hose with Male/male Couplers (3.04 Meters)
15HOSEM/F	15 Foot Hose with Male/female Couplers (4.37 Meters)
15HOSEM/M	15 Foot Hose with Male/male Couplers (4.37 Meters)
25HOSEM/F	25 Foot Hose with Male/female Couplers (7.62 Meters)
25HOSEM/M	25 Foot Hose with Male/male Couplers (7.62 Meters)

**WARNING: Hoses connecting hydraulic equipment should not extend straight upward more than 25 feet (7.6 meters).**

# Swage Tool Assembly and Overview Instructions

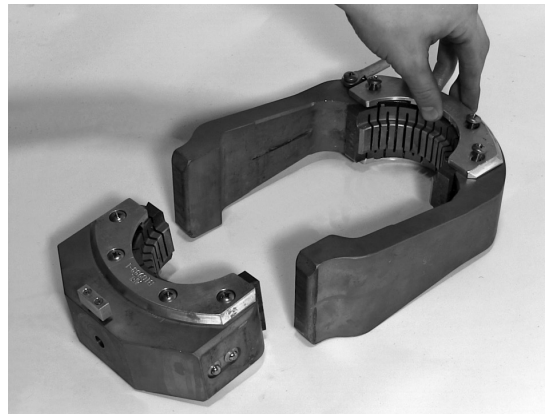
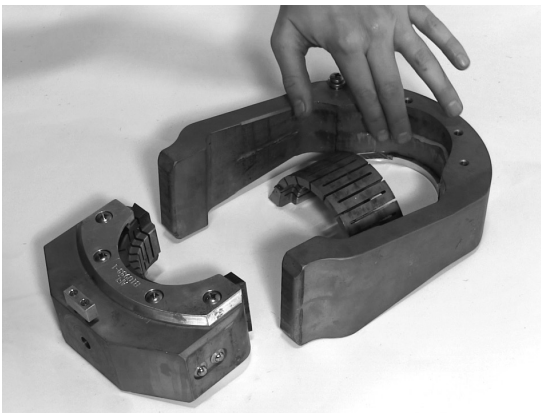
1. Apply Swage lube to the head, die block and the outside of each Swage die. Spread evenly with fingers.



2. With the die faceplate off, slide die into grooved area of the head ensuring it sits correctly in the bottom faceplate.



3. Install the top faceplate to lock the die into the head assembly using a Phillips head screw driver. Repeat steps for the die block assembly.



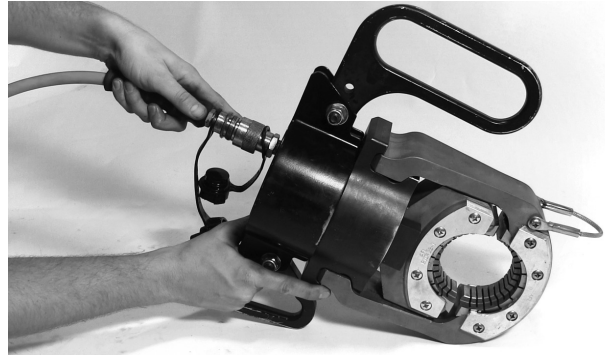
*continued*  
→

## Swage Tool Assembly and Overview Instructions

4. Attach the die block to power unit by holding the unlock button on the side of the die block. Slide the pin into bottom and release lock.



6. Remove safety caps from the bottom of power unit and the hose fitting. Insert hose fitting into power unit and tighten to ensure a tight seal.



5. Slide the head assembly on to the power unit and ensure the rollers on the die block roll into place. **(Note: Incorrect assembly could damage the tool and dies when compressed. Ensure your press head is aligned with the power unit.)**



*continued*  
→

# Swage Tool Maintenance Instructions

1. Disassemble press head from power unit.
2. Disassemble press head: Remove the die face plates and the top die.
3. Use aerosol parts cleaner to spray press head, die and face plates. Wipe off with a clean rag to remove any grease, dirt or debris.
4. Reassemble press head: Re-install one face plate on the press head, apply Swage grease to the press head surface that comes in contact with the die when assembled, apply Swage grease to the outside of the die, then install the die into the press head. Next, install the second face plate.
5. Remove the die block from the power unit.
6. Disassemble the die block by removing both face plates and die.
7. Use aerosol parts cleaner to spray die block, die and face plates. Wipe off with a clean rag to remove any grease, dirt or debris.
8. Reassemble die block: Re-install one face plate on the die block, apply Swage grease to the die block surface that comes in contact with the die when assembled, apply Swage grease to the outside of the die, then install the die into the die block. Next, install the second face plate.
9. Use aerosol parts cleaner to spray the power unit. Wipe off with a clean rag to remove any grease, dirt or debris.
10. Re-install the die block onto the power unit. Then re-install the press head assembly.

**NOTE: THE 45 AND 65 TON PRESS SHOULD BE CLEANED AFTER EACH USE AND/OR WHEN DIES ARE CHANGED.**

## Preventive Maintenance Instructions

### Before Each Use:

- Ensure the swivel is secured tightly.
- Ensure the quick disconnect is tight and works properly
- Ensure the piston is fully retracted and flush with the top of the power unit surface.
- Ensure the die block lock button is operating properly and that the die block engages into the power unit correctly.
- Ensure the quick disconnect is tight and works properly.
- After the 45 or 65 Ton Press is fully assembled, run to full compression a few times to ensure there are no leaks and/or lack of compression.

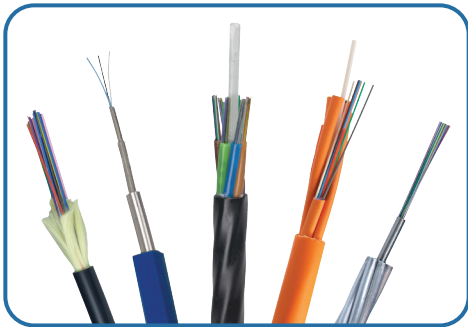
### Other Things to Inspect:

- Check Swage dies for debris between slots and for any cracks. Clean the dies using a wire brush and a rag to remove metal chips, excess grease and dirt between the slots of the dies. Use a rag to “floss” each groove in the die blocks. (See Tool Maintenance Instructions for more information.)
- Perform die penetrate inspection on the cylinder and head at least once per year.



**Please contact your AFL Sales Representative for information about our other products or services.**

**FIBER OPTIC CABLE  
(OPGW, ADSS, Loose Tube)**



**FIBER OPTIC CABLE  
ACCESSORIES**



**TRANSMISSION AND  
DISTRIBUTION**



**SUBSTATION AND  
NETWORK UNDERGROUND**



