

For complete installation instructions and videos, visit [www.AFLglobal.com/APEX](http://www.AFLglobal.com/APEX) or use the QR code.



## ADSS HANGER BRACKET TAB

The ADSS Hanger Bracket Tab is designed to attach an Apex® Closure at a fixed height off ADSS Cable Retention Hardware in BOTH locations. These are not designed to be attached directly onto ADSS cable.

### Ordering Information

AFL NO.	DESCRIPTION
AX-KIT-ADSS-TAB	ADSS Tab Mount Hanger Kit

Standard Mounting Hardware included — Brackets, Strap Ties, Grip Tape, Bolts, Flat Fender Washers, Lock Washers and Nylock Nuts (**Figure 1**)



Figure 1

## INSTALLING ADSS BRACKETS TO APEX TABS

- Align Tab Bracket to attach to Apex dome. Both brackets should face the same direction for consistency.
  - It is "standard" to mount the bracket with the strand mount over the tab to help the closure balance on the strand; but it may be installed the opposite way if an application calls for it. (**Figure 2**)
- Insert the supplied carriage bolt through bracket and then through the tab on the dome.
- Install oversized flat fender washer, lock washer and Nylock nut. (**Figure 3**)
- Make sure carriage bolt is fully seated in bracket BEFORE tightening.
- Tighten with can wrench or 7/16" socket (30-50 in/lbs). (**Figure 4**)



Figure 2



Figure 3

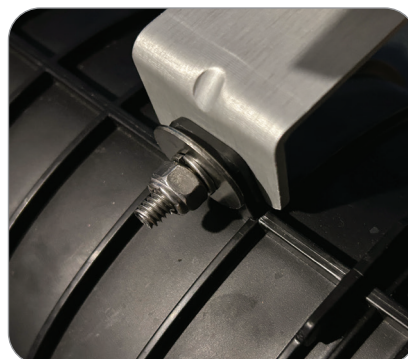


Figure 4

### INSTALLING APEX ON ADSS RETENTION HARDWARE

1. Apex ADSS Hanger Bracket will mount ADSS Retention Hardware in both locations.
2. Mark retention hardware where the Apex Closure will be secured and apply supplied grip tape to each location fully surrounding the hardware. (Shown with suspension rod (not used nor included) for illustrative purposes.) (Figure 5)
3. Hang Apex over the grip tape locations and feed large black strap tie through each bracket. (Figure 6)
4. Once Apex is in the proper location, cinch and secure the 2 strap ties. (Figure 7)
5. Cut excess tail from strap tie. Slide latch toward base of bracket to protect the latch long-term. (Figure 8)

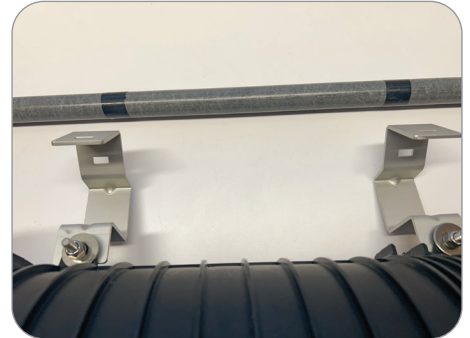


Figure 5



Figure 6



Figure 7

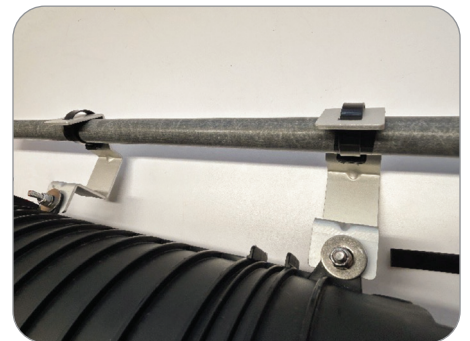


Figure 8