

For complete installation instructions and videos, visit [www.AFLglobal.com/APEX](http://www.AFLglobal.com/APEX) or use the QR code.



## ADJUSTABLE HEIGHT STRAND BRACKET TAB

The Adjustable Height Aerial Bracket Tab is designed to attach an Apex Closure at an adjustable height off standard strand 4-1/2" to 8-1/2' from strand to closure in the standard configuration. Alternative configurations can be used to reduce strand to closure height if desired. These are pre-assembled and ready to install pinch clamp on top of strand using a can wrench or 7/16" socket.

### Ordering Information

AFL NO.	DESCRIPTION
AX-KIT-ADJAERIAL-TAB	Adjustable Aerial Strand Tab Mount Hanger Kit

Standard Mounting Hardware included — Adjustable Brackets, Bolts, Fender Flat Washers, Lock Washers and 7/16" Nylock Nuts (Figure 1)



Figure 1

## INSTALLING APEX TAB AERIAL BRACKETS TO APEX TABS

1. Align Tab Bracket to attach to Apex dome. Both brackets should face the same direction for consistency.
  - It is "standard" to mount the bracket with the strand mount over the tab to help the closure balance on the strand but it may be installed the opposite way if an application calls for it. (Figure 2)
2. Insert the supplied carriage bolt through bracket and then through the tab on the dome.
3. Install oversized flat fender washer, lock washer and Nylock nut. (Figure 3)
4. Make sure Carriage Bolt is fully seated in bracket BEFORE tightening.
5. Tighten with Can Wrench or 7/16" socket (30-50 in/lbs). (Figure 4)

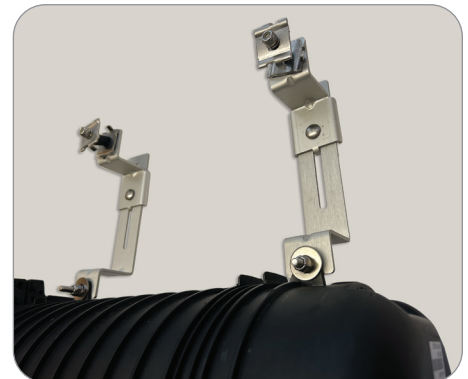


Figure 2

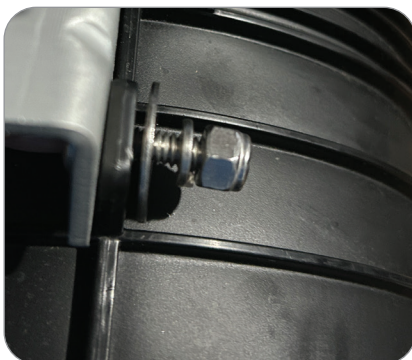


Figure 3

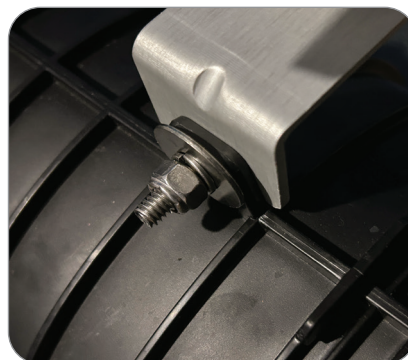


Figure 4

### INSTALLING APEX CLOSURE ONTO STRAND

1. Once brackets are both installed and tightened onto Apex tabs, you may hang the closure. (**Figure 5**)
  - It is assembled in the “standard” configuration with the strand mount assembled to the slide as shown. (**Figure 6**)
  - If the application calls for the rotation of this strand mount clamp, simply loosen the adjustment bolt and rotate the upper bracket 180 degrees as shown. (**Figures 7 and 8**)



**Figure 5**



**Figure 6 – Standard Configuration**



**Figure 7 – Alternative Configuration 1**



**Figure 8 – Alternative Configuration 2**

2. Align Apex pinch clamps OVER the strand and tighten to snug. (**Figure 9**)
  - No need to remove heat shrink spacer, it will crush as the pinch clamp is tightened.
  - Repeat for the second clamp.
3. Make sure Carriage bolt is fully seated in bracket BEFORE tightening.



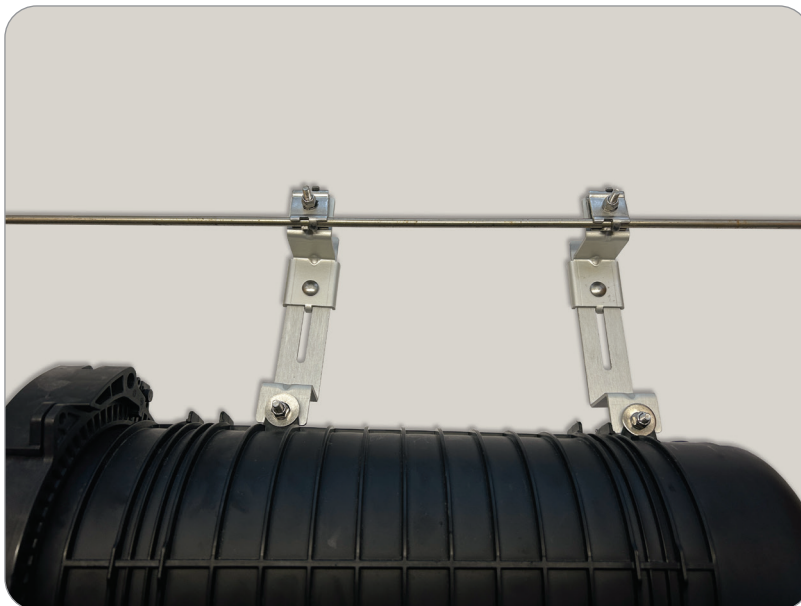
**Figure 9**

**INSTALLING APEX CLOSURE ONTO STRAND (cont.)**

4. Adjust location of the Apex closure, then secure pinch clamps to strand using a can wrench or 7/16" socket (30-50 in/lbs). (Figures 10 and 11)

**Figure 10****Figure 11**

5. Make sure both the hanger pinch clamp as well as the height adjustment bolts are secured (30-50 in/lbs). (Figure 12)

**Figure 12**