

For complete installation instructions and videos, visit www.AFLglobal.com/APEX or use the QR code.



APEX FIXED HEIGHT STRAND BRACKET TAB

The Fixed Height Aerial Bracket Tab is designed to attach an Apex at a fixed height off standard strand 3 1/2" from strand to tab bolt. These are pre assembled and ready to install pinch clamp on top of strand using a can wrench or 7/16" socket.

Ordering Information

AFL NO.	DESCRIPTION
AX-KIT-AERIAL-TAB	Aerial Strand Tab Mount Hanger Kit

Standard Mounting Hardware included — Brackets, Bolts, Fender Flat Washers, Lock Washers and 7/16" Nylock Nuts (**Figure 1**)

INSTALLING APEX TAB AERIAL BRACKETS TO APEX TABS

1. Align Tab Bracket to attach to Apex dome. Both brackets should face the same direction for consistency.
 - It is "standard" to mount the bracket with the strand mount over the tab to help the closure balance on the strand but it may be installed the opposite way if an application calls for it. (**Figure 2**)
2. Insert the supplied carriage bolt through bracket and then through the tab on the dome.
3. Install oversized flat fender washer, lock washer and Nylock nut. (**Figure 3**)
4. Make sure Carriage bolt is fully seated in bracket BEFORE tightening.
5. Tighten with Can Wrench or 7/16" socket (30-50 in/lbs). (**Figure 4**)

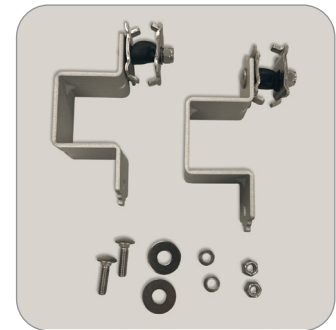


Figure 1

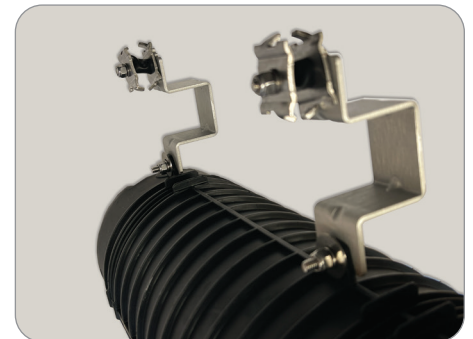


Figure 2

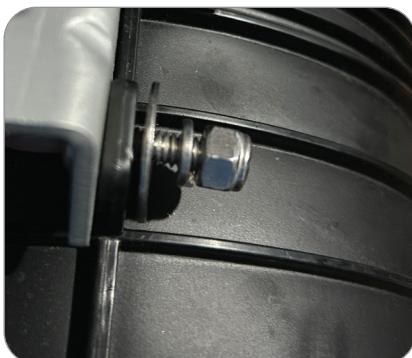


Figure 3

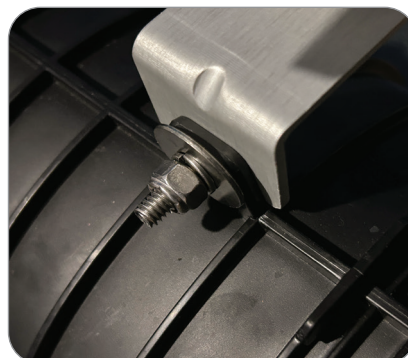


Figure 4

INSTALLING APEX CLOSURE ONTO STRAND

1. Once brackets are both installed and tightened onto Apex tabs, you may hang the closure. **(Figure 5)**
2. Align Apex pinch clamps **OVER** the strand and tighten to snug. **(Figure 6)**
 - No need to remove heat shrink spacer, it will crush as the pinch clamp is tightened. **(Figure 7)**
 - Repeat for the second clamp.
3. Make sure Carriage bolt is fully seated in bracket **BEFORE** tightening.
4. Adjust location of Apex then secure pinch clamps to strand using a can wrench or 7/16" socket. (30-50 in/lbs). **(Figure 8)**

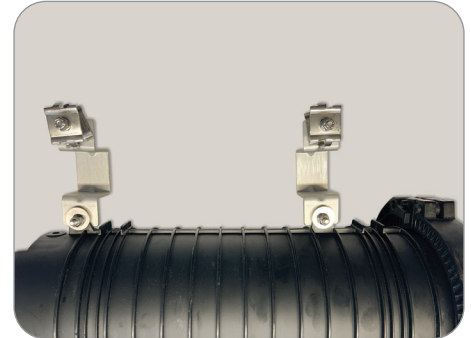


Figure 5



Figure 6

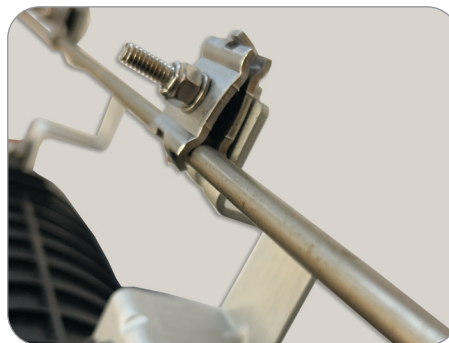


Figure 7



Figure 8